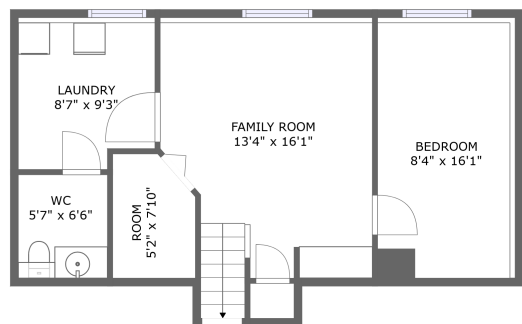
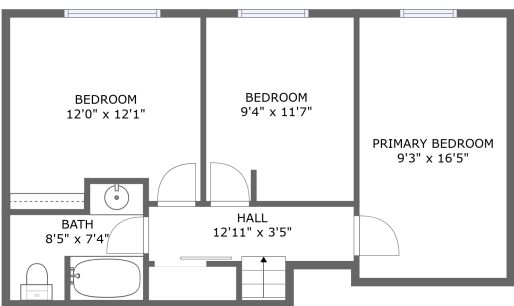


Home report

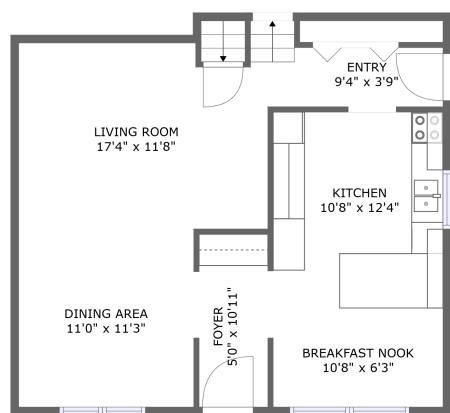
9 Melanie Crescent, Glen Cairn, Kanata, Ontario, Canada, K2L 2E4



FLOOR 1



FLOOR 3



FLOOR 2


Total Area: 1698 sq. ft

Floor 1: 529 sq. ft, Floor 2: 635 sq. ft, Floor 3: 534 sq. ft

Excluded: Walls: 150 sq. ft

Property summary

 **3** Floors

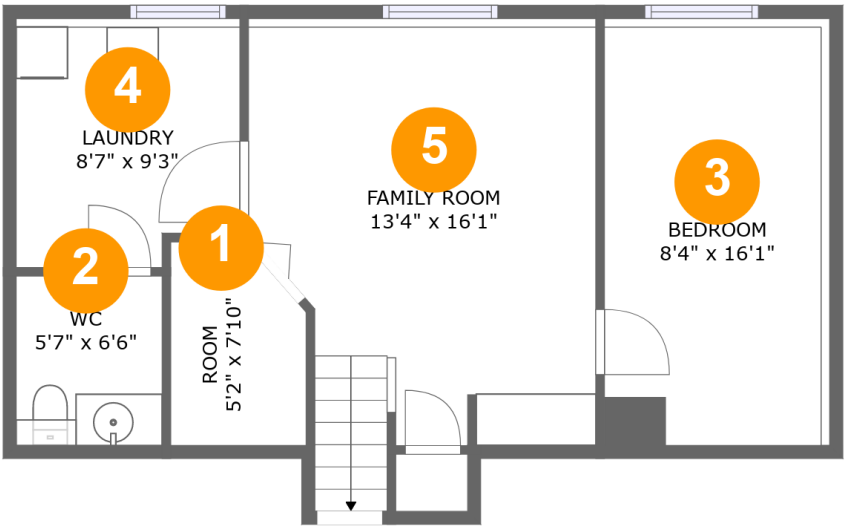
 **4** Bedrooms

 **1** Bathrooms

 **1** Half baths

Home report

9 Melanie Crescent, Glen Cairn, Kanata, Ontario, Canada, K2L 2E4

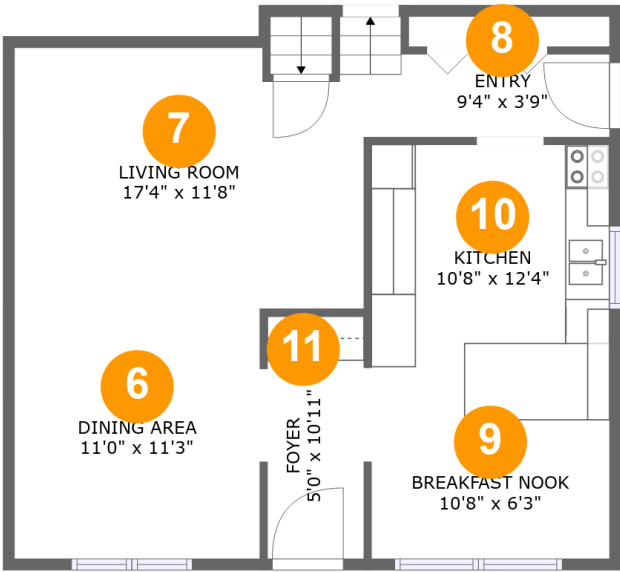


Room dimensions

Floor 1 Total:529sqft   Excluded: 0sqft

#		Max Dimensions	sqft	Included
1	Room	5'2" x 7'10"	37 sq. ft	Yes
2	WC	5'7" x 6'6"	36 sq. ft	Yes
3	Bedroom	8'4" x 16'1"	142 sq. ft	Yes
4	Laundry	8'7" x 9'3"	78 sq. ft	Yes
5	Family Room	13'4" x 16'1"	208 sq. ft	Yes

9 Melanie Crescent, Glen Cairn, Kanata, Ontario, Canada, K2L 2E4

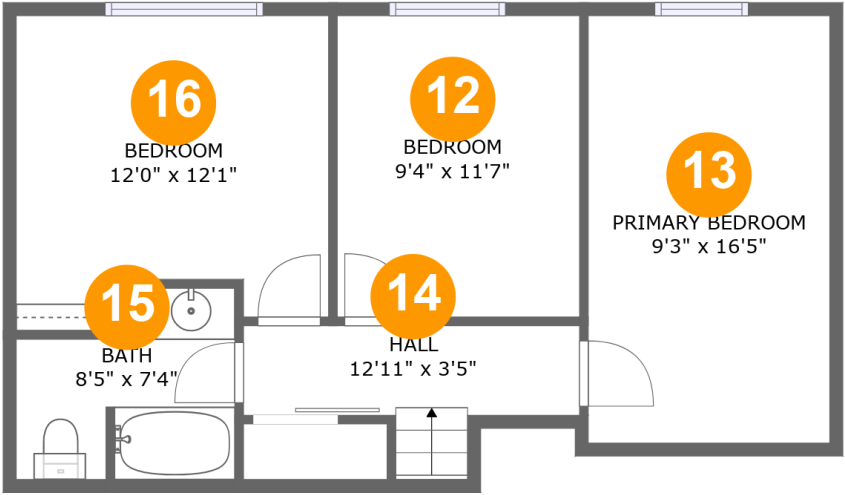


Room dimensions

Floor 2 Total:635sqft   Excluded: 0sqft

#		Max Dimensions	sqft	Included
6	Dining Area	11'0" x 11'3"	124 sq. ft	Yes
7	Living Room	17'4" x 11'8"	189 sq. ft	Yes
8	Entry	9'4" x 3'9"	35 sq. ft	Yes
9	Breakfast Nook	10'8" x 6'3"	67 sq. ft	Yes
10	Kitchen	10'8" x 12'4"	132 sq. ft	Yes
11	Foyer	5'0" x 10'11"	50 sq. ft	Yes

9 Melanie Crescent, Glen Cairn, Kanata, Ontario, Canada, K2L 2E4



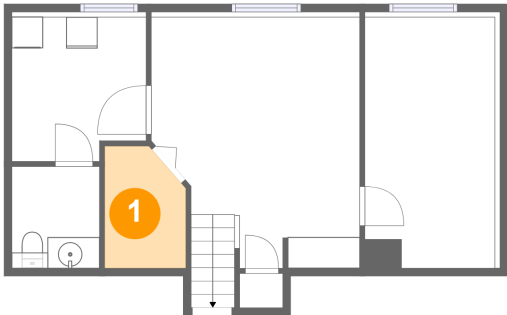
Room dimensions

Floor 3 Total:534sqft   Excluded: 0sqft

#		Max Dimensions	sqft	Included
12	Bedroom	9'4" x 11'7"	107 sq. ft	Yes
13	Primary Bedroom	9'3" x 16'5"	152 sq. ft	Yes
14	Hall	12'11" x 3'5"	51 sq. ft	Yes
15	Bath	8'5" x 7'4"	51 sq. ft	Yes
16	Bedroom	12'0" x 12'1"	136 sq. ft	Yes

9 Melanie Crescent, Glen Cairn, Kanata, Ontario, Canada, K2L 2E4

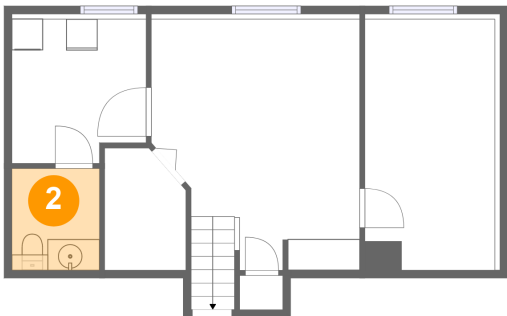
1 Floor 1 - Room



Max Dimensions: 5'2" x 7'10"  
Calculated Area: 37 sq. ft  
Included: Yes

Heated: Yes  
Finished: Yes  
Enclosed: Yes  
Contiguous: Yes  
Permitted: Yes  
Wet space: No  
Addition: No  
Conversion: No

2 Floor 1 - WC

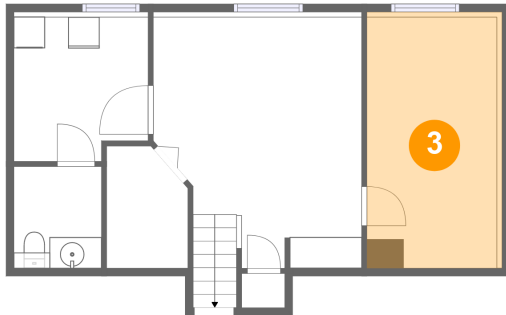


Max Dimensions: 5'7" x 6'6"  
Calculated Area: 36 sq. ft  
Included: Yes

Heated: Yes  
Finished: Yes  
Enclosed: Yes  
Contiguous: Yes  
Permitted: Yes  
Wet space: Yes  
Addition: No  
Conversion: No

9 Melanie Crescent, Glen Cairn, Kanata, Ontario, Canada, K2L 2E4

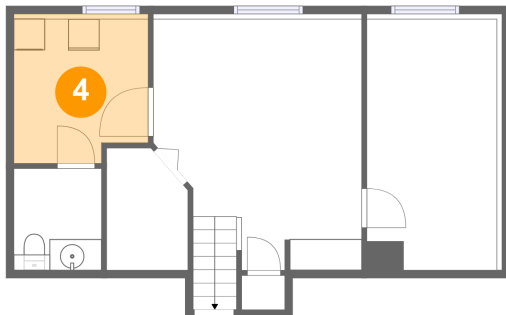
### 3 Floor 1 - Bedroom



Max Dimensions: 8'4" x 16'1"  
Calculated Area: 142 sq. ft  
Included: Yes

Heated: Yes  
Finished: Yes  
Enclosed: Yes  
Contiguous: Yes  
Permitted: Yes  
Wet space: No  
Addition: No  
Conversion: No

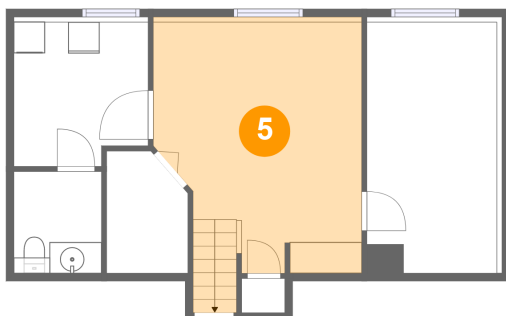
### 4 Floor 1 - Laundry



Max Dimensions: 8'7" x 9'3"  
Calculated Area: 78 sq. ft  
Included: Yes

Heated: Yes  
Finished: Yes  
Enclosed: Yes  
Contiguous: Yes  
Permitted: Yes  
Wet space: No  
Addition: No  
Conversion: No

### 5 Floor 1 - Family Room

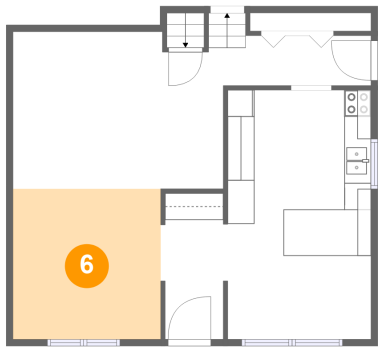


Max Dimensions: 13'4" x 16'1"  
Calculated Area: 208 sq. ft  
Included: Yes

Heated: Yes  
Finished: Yes  
Enclosed: Yes  
Contiguous: Yes  
Permitted: Yes  
Wet space: No  
Addition: No  
Conversion: No

9 Melanie Crescent, Glen Cairn, Kanata, Ontario, Canada, K2L 2E4

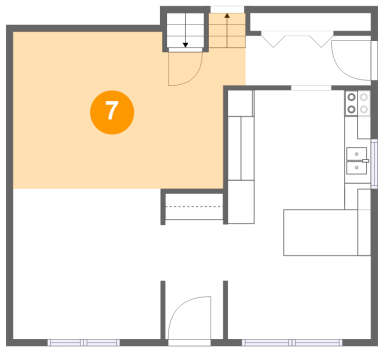
6 Floor 2 - Dining Area



Max Dimensions: 11'0" x 11'3"  
Calculated Area: 124 sq. ft  
Included: Yes

Heated: Yes  
Finished: Yes  
Enclosed: Yes  
Contiguous: Yes  
Permitted: Yes  
Wet space: No  
Addition: No  
Conversion: No

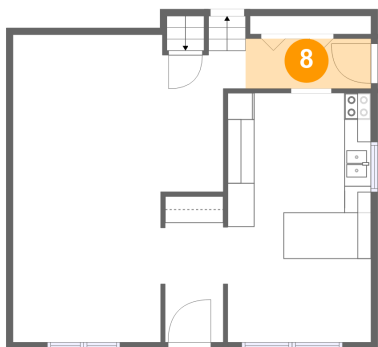
7 Floor 2 - Living Room



Max Dimensions: 17'4" x 11'8"  
Calculated Area: 189 sq. ft  
Included: Yes

Heated: Yes  
Finished: Yes  
Enclosed: Yes  
Contiguous: Yes  
Permitted: Yes  
Wet space: No  
Addition: No  
Conversion: No

8 Floor 2 - Entry

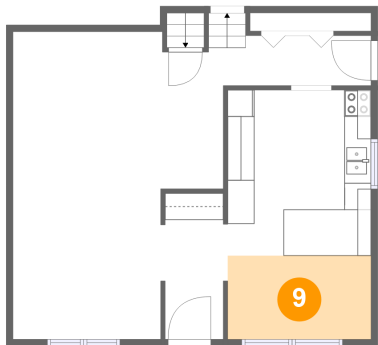


Max Dimensions: 9'4" x 3'9"  
Calculated Area: 35 sq. ft  
Included: Yes

Heated: Yes  
Finished: Yes  
Enclosed: Yes  
Contiguous: Yes  
Permitted: Yes  
Wet space: No  
Addition: No  
Conversion: No

9 Melanie Crescent, Glen Cairn, Kanata, Ontario, Canada, K2L 2E4

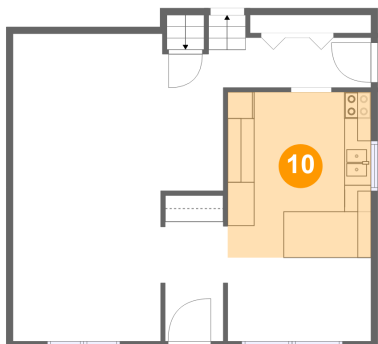
9 Floor 2 - Breakfast Nook



Max Dimensions: 10'8" x 6'3"  
Calculated Area: 67 sq. ft  
Included: Yes

Heated: Yes  
Finished: Yes  
Enclosed: Yes  
Contiguous: Yes  
Permitted: Yes  
Wet space: No  
Addition: No  
Conversion: No

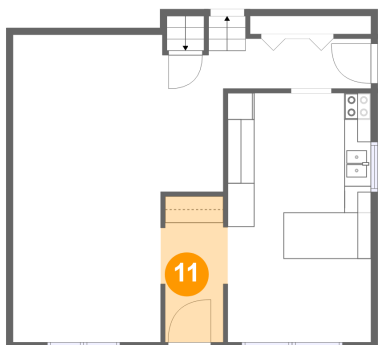
10 Floor 2 - Kitchen



Max Dimensions: 10'8" x 12'4"  
Calculated Area: 132 sq. ft  
Included: Yes

Heated: Yes  
Finished: Yes  
Enclosed: Yes  
Contiguous: Yes  
Permitted: Yes  
Wet space: No  
Addition: No  
Conversion: No

11 Floor 2 - Foyer



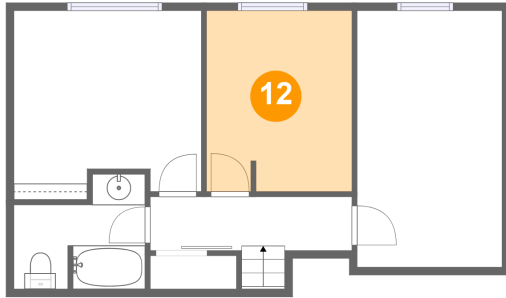
Max Dimensions: 5'0" x 10'11"  
Calculated Area: 50 sq. ft  
Included: Yes

Heated: Yes  
Finished: Yes  
Enclosed: Yes  
Contiguous: Yes  
Permitted: Yes  
Wet space: No  
Addition: No  
Conversion: No



9 Melanie Crescent, Glen Cairn, Kanata, Ontario, Canada, K2L 2E4

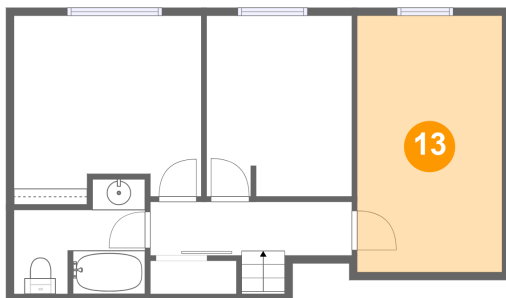
## 12 Floor 3 - Bedroom



Max Dimensions: 9'4" x 11'7"  
Calculated Area: 107 sq. ft  
Included: Yes

Heated: Yes  
Finished: Yes  
Enclosed: Yes  
Contiguous: Yes  
Permitted: Yes  
Wet space: No  
Addition: No  
Conversion: No

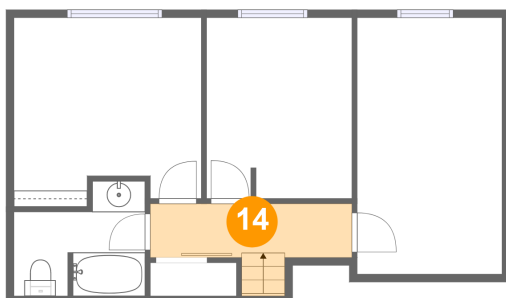
## 13 Floor 3 - Primary Bedroom



Max Dimensions: 9'3" x 16'5"  
Calculated Area: 152 sq. ft  
Included: Yes

Heated: Yes  
Finished: Yes  
Enclosed: Yes  
Contiguous: Yes  
Permitted: Yes  
Wet space: No  
Addition: No  
Conversion: No

## 14 Floor 3 - Hall

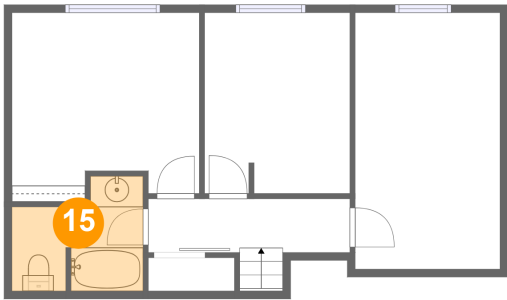


Max Dimensions: 12'11" x 3'5"  
Calculated Area: 51 sq. ft  
Included: Yes

Heated: Yes  
Finished: Yes  
Enclosed: Yes  
Contiguous: Yes  
Permitted: Yes  
Wet space: No  
Addition: No  
Conversion: No

9 Melanie Crescent, Glen Cairn, Kanata, Ontario, Canada, K2L 2E4

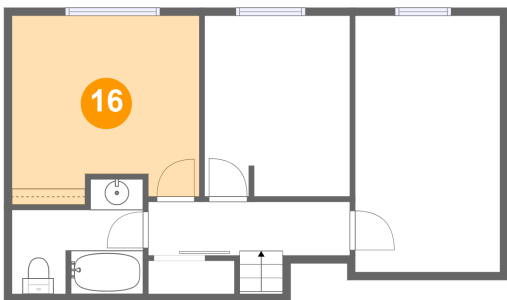
15 Floor 3 - Bath



Max Dimensions: 8'5" x 7'4"  
Calculated Area: 51 sq. ft  
Included: Yes

Heated: Yes  
Finished: Yes  
Enclosed: Yes  
Contiguous: Yes  
Permitted: Yes  
Wet space: Yes  
Addition: No  
Conversion: No

16 Floor 3 - Bedroom



Max Dimensions: 12'0" x 12'1"  
Calculated Area: 136 sq. ft  
Included: Yes

Heated: Yes  
Finished: Yes  
Enclosed: Yes  
Contiguous: Yes  
Permitted: Yes  
Wet space: No  
Addition: No  
Conversion: No