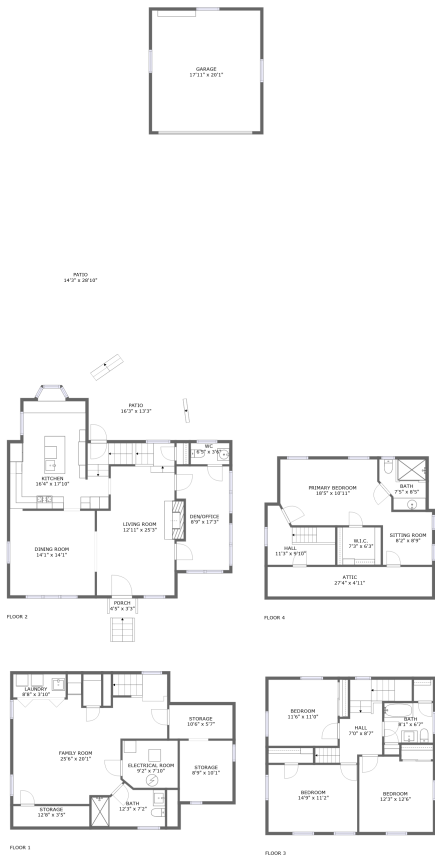


**19 Abbington Terrace, Glen Rock, Bergen County,
New Jersey, United States, 07452**



Property Summary



4 floors



4 bedrooms



3 bathrooms



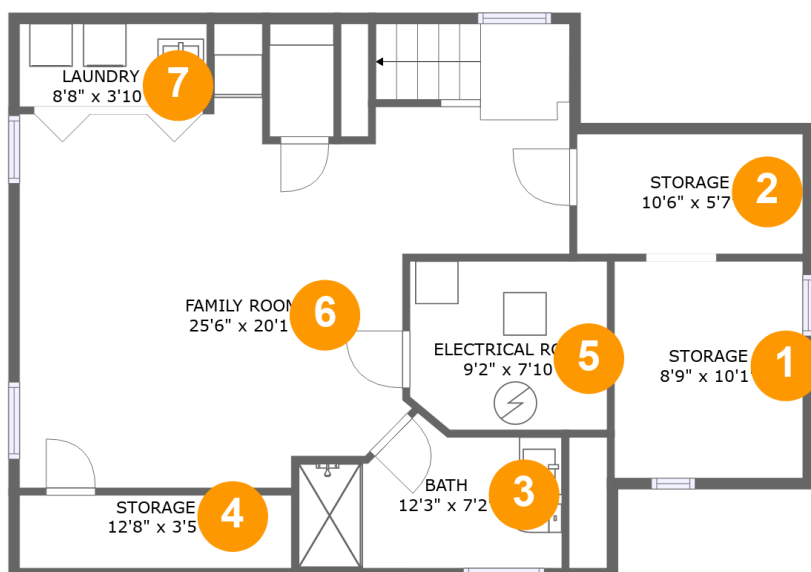
4,242 total sqft



1 garages

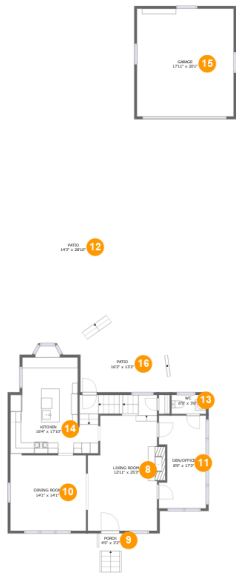


2,646 Gross Living Area sqft

**19 Abbington Terrace, Glen Rock, Bergen County,
New Jersey, United States, 07452****Room Dimensions****Floor 1****Total sqft: 882****Living area: 590**

#	Room name	Dimensions	Area (sqft)	Counted as Living Area
1	Storage	8'9" x 10'1"	88 sq. ft	No
2	Storage	10'6" x 5'7"	59 sq. ft	No
3	Bath	12'3" x 7'2"	71 sq. ft	Yes
4	Storage	12'8" x 3'5"	43 sq. ft	No
5	Electrical Room	9'2" x 7'10"	70 sq. ft	No
6	Family Room	25'6" x 20'1"	389 sq. ft	Yes
7	Laundry	8'8" x 3'10"	34 sq. ft	Yes

**19 Abbington Terrace, Glen Rock, Bergen County,
New Jersey, United States, 07452**

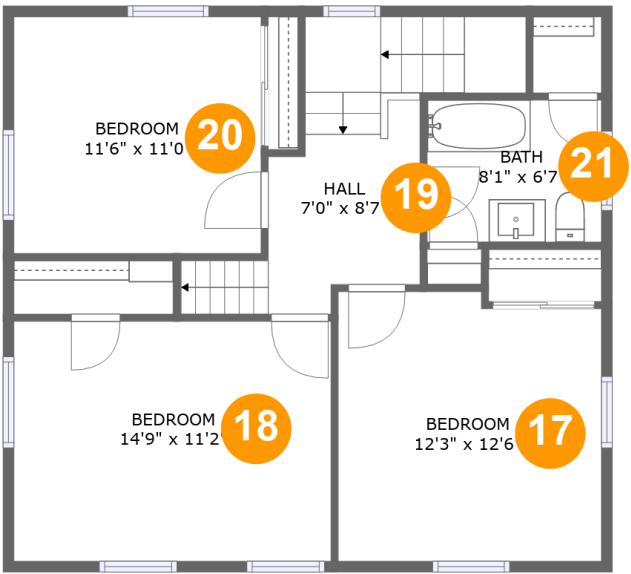


Room Dimensions

Floor 2 **Total sqft: 1969** **Living area: 1023**

#	Room name	Dimensions	Area (sqft)	Counted as Living Area
8	Living Room	12'11" x 25'3"	331 sq. ft	Yes
9	Porch	4'5" x 3'3"	27 sq. ft	No
10	Dining Room	14'1" x 14'1"	198 sq. ft	Yes
11	DEN/OFFICE	8'9" x 17'3"	140 sq. ft	Yes
12	Patio	14'3" x 28'10"	322 sq. ft	Yes
13	Wc	6'5" x 3'6"	22 sq. ft	Yes
14	Kitchen	16'4" x 17'10"	228 sq. ft	Yes
15	Garage	17'11" x 20'1"	361 sq. ft	No
16	Patio	16'3" x 13'3"	187 sq. ft	No

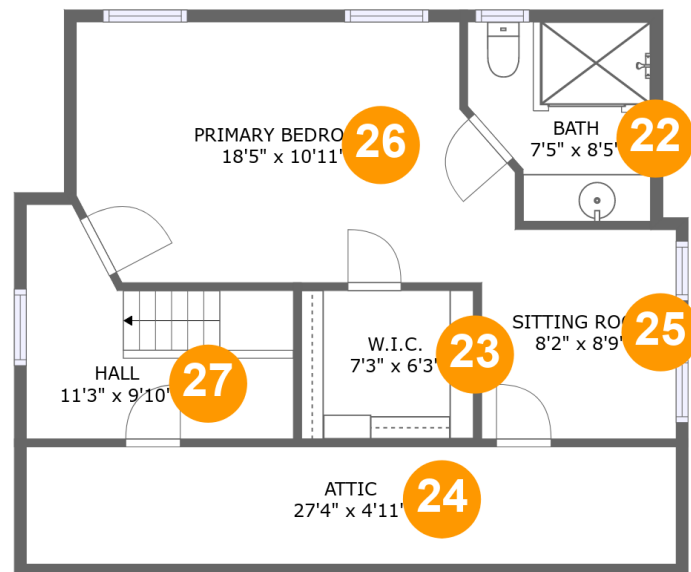
**19 Abbingtion Terrace, Glen Rock, Bergen County,
New Jersey, United States, 07452**



Room Dimensions

Floor 3 **Total sqft: 744** **Living area: 744**

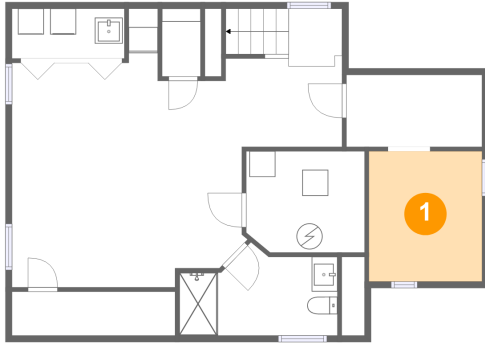
#	Room name	Dimensions	Area (sqft)	Counted as Living Area
17	Bedroom	12'3" x 12'6"	149 sq. ft	Yes
18	Bedroom	14'9" x 11'2"	164 sq. ft	Yes
19	Hall	7'0" x 8'7"	108 sq. ft	Yes
20	Bedroom	11'6" x 11'0"	126 sq. ft	Yes
21	Bath	8'1" x 6'7"	53 sq. ft	Yes

**19 Abbington Terrace, Glen Rock, Bergen County,
New Jersey, United States, 07452****Room Dimensions****Floor 4****Total sqft: 647****Living area: 289**

#	Room name	Dimensions	Area (sqft)	Counted as Living Area
22	Bath	7'5" x 8'5"	56 sq. ft	No
23	W.i.c.	7'3" x 6'3"	45 sq. ft	No
24	Attic	27'4" x 4'11"	134 sq. ft	No
25	Sitting Room	8'2" x 8'9"	70 sq. ft	Yes
26	Primary Bedroom	18'5" x 10'11"	185 sq. ft	Yes
27	Hall	11'3" x 9'10"	80 sq. ft	No

19 Abbington Terrace, Glen Rock, Bergen County, New Jersey, United States, 07452

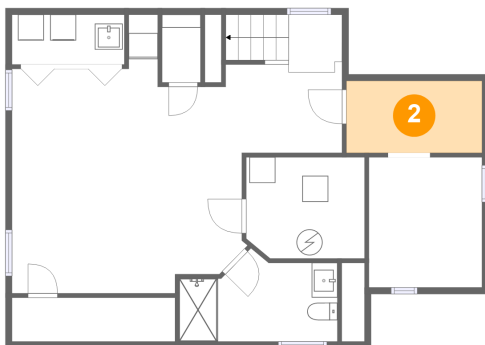
1 Floor 1 - Storage



Dimensions: 8'9" x 10'1"
Area: 88 sq. ft
Counted as Living Area: No

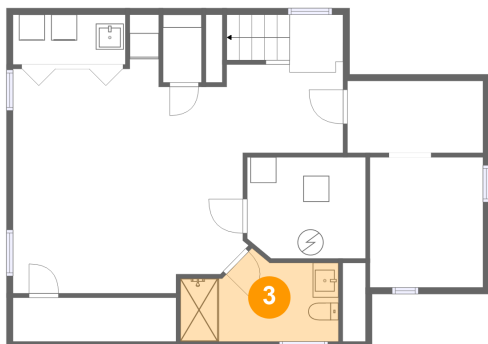
Heated: No
Finished: No
Enclosed: No
Contiguous: Yes
Permitted: Yes
Wet Space: No
Addition: No
Conversion: No

2 Floor 1 - Storage



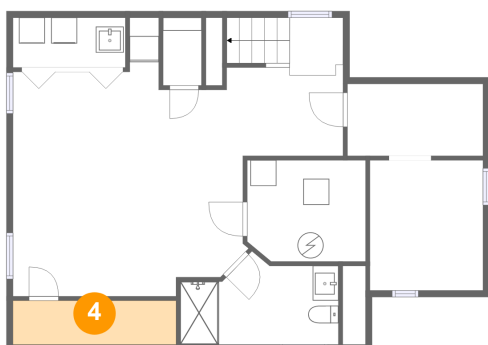
Dimensions: 10'6" x 5'7"
Area: 59 sq. ft
Counted as Living Area: No

Heated: No
Finished: No
Enclosed: No
Contiguous: Yes
Permitted: Yes
Wet Space: No
Addition: No
Conversion: No

**19 Abbington Terrace, Glen Rock, Bergen County,
New Jersey, United States, 07452****3 Floor 1 - Bath**

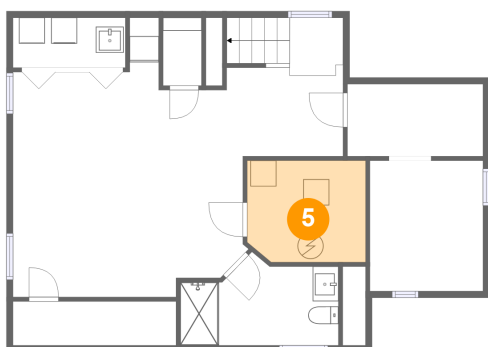
Dimensions: 12'3" x 7'2"
Area: 71 sq. ft
Counted as Living Area:
Yes

Heated: Yes
Finished: Yes
Enclosed: Yes
Contiguous:
Yes
Permitted: Yes
Wet Space: Yes
Addition: No
Conversion: No

4 Floor 1 - Storage

Dimensions: 12'8" x 3'5"
Area: 43 sq. ft
Counted as Living Area: No

Heated: No
Finished: No
Enclosed: No
Contiguous: Yes
Permitted: Yes
Wet Space: No
Addition: No
Conversion: No

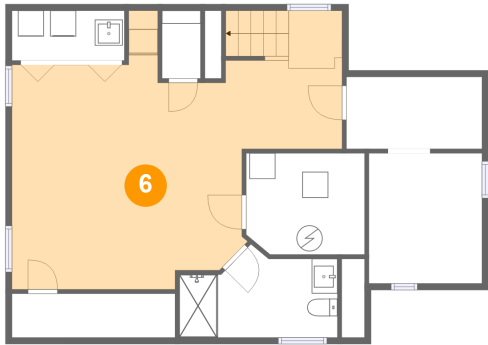
5 Floor 1 - Electrical Room

Dimensions: 9'2" x 7'10"
Area: 70 sq. ft
Counted as Living Area: No

Heated: No
Finished: No
Enclosed: Yes
Contiguous: Yes
Permitted: Yes
Wet Space: No
Addition: No
Conversion: No

**19 Abbington Terrace, Glen Rock, Bergen County,
New Jersey, United States, 07452**

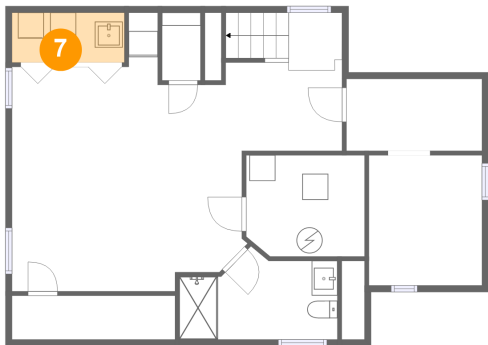
6 Floor 1 - Family Room



Dimensions: 25'6" x 20'1"
Area: 389 sq. ft
Counted as Living Area:
Yes

Heated: Yes
Finished: Yes
Enclosed: Yes
Contiguous:
Yes
Permitted: Yes
Wet Space: No
Addition: No
Conversion: No

7 Floor 1 - Laundry



Dimensions: 8'8" x 3'10"
Area: 34 sq. ft
Counted as Living Area:
Yes

Heated: Yes
Finished: Yes
Enclosed: Yes
Contiguous:
Yes
Permitted: Yes
Wet Space: No
Addition: No
Conversion: No

8 Floor 2 - Living Room



Dimensions: 12'11" x 25'3"
Area: 331 sq. ft
Counted as Living Area:
Yes

Heated: Yes
Finished: Yes
Enclosed: Yes
Contiguous:
Yes
Permitted: Yes
Wet Space: No
Addition: No
Conversion: No

**19 Abbington Terrace, Glen Rock, Bergen County,
New Jersey, United States, 07452****9 Floor 2 - Porch**

Dimensions: 4'5" x 3'3"
Area: 27 sq. ft
Counted as Living Area: No

Heated: No
Finished: Yes
Enclosed: No
Contiguous: Yes
Permitted: Yes
Wet Space: No
Addition: No
Conversion: No

**10 Floor 2 - Dining Room**

Dimensions: 14'1" x 14'1"
Area: 198 sq. ft
Counted as Living Area: Yes

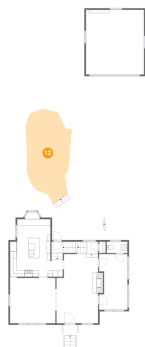
Heated: Yes
Finished: Yes
Enclosed: Yes
Contiguous: Yes
Permitted: Yes
Wet Space: No
Addition: No
Conversion: No

**11 Floor 2 - DEN/OFFICE**

Dimensions: 8'9" x 17'3"
Area: 140 sq. ft
Counted as Living Area: Yes

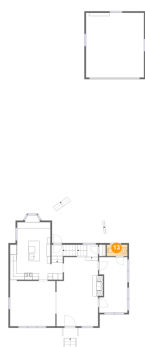
Heated: Yes
Finished: Yes
Enclosed: Yes
Contiguous: Yes
Permitted: Yes
Wet Space: No
Addition: No
Conversion: No



**19 Abbington Terrace, Glen Rock, Bergen County,
New Jersey, United States, 07452****12 Floor 2 - Patio**

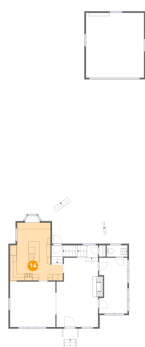
Dimensions: 14'3" x 28'10"
Area: 322 sq. ft
Counted as Living Area:
Yes

Heated: No
Finished: Yes
Enclosed: No
Contiguous:
Yes
Permitted: Yes
Wet Space: No
Addition: No
Conversion: No

13 Floor 2 - Wc

Dimensions: 6'5" x 3'6"
Area: 22 sq. ft
Counted as Living Area:
Yes

Heated: Yes
Finished: Yes
Enclosed: Yes
Contiguous:
Yes
Permitted: Yes
Wet Space: Yes
Addition: No
Conversion: No

14 Floor 2 - Kitchen

Dimensions: 16'4" x 17'10"
Area: 228 sq. ft
Counted as Living Area:
Yes

Heated: Yes
Finished: Yes
Enclosed: Yes
Contiguous:
Yes
Permitted: Yes
Wet Space: No
Addition: No
Conversion: No

**19 Abbington Terrace, Glen Rock, Bergen County,
New Jersey, United States, 07452****15 Floor 2 - Garage**

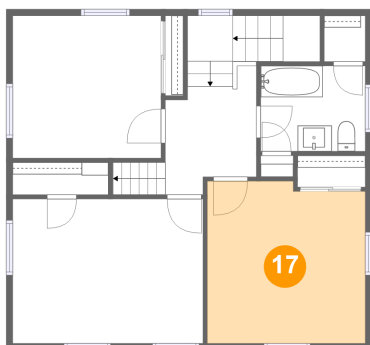
Dimensions: 17'11" x 20'1"
Area: 361 sq. ft
Counted as Living Area: No

Heated: No
Finished: No
Enclosed: Yes
Contiguous: Yes
Permitted: Yes
Wet Space: No
Addition: No
Conversion: No

16 Floor 2 - Patio

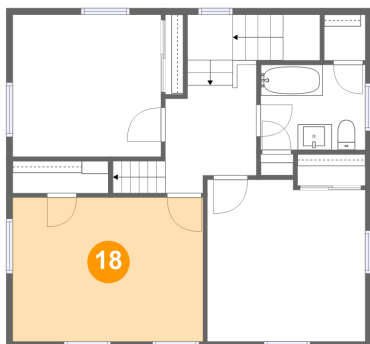
Dimensions: 16'3" x 13'3"
Area: 187 sq. ft
Counted as Living Area: No

Heated: No
Finished: Yes
Enclosed: No
Contiguous: Yes
Permitted: Yes
Wet Space: No
Addition: No
Conversion: No

17 Floor 3 - Bedroom

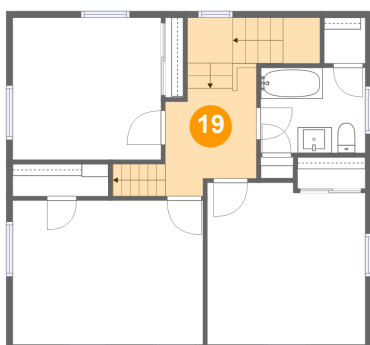
Dimensions: 12'3" x 12'6"
Area: 149 sq. ft
Counted as Living Area: Yes

Heated: Yes
Finished: Yes
Enclosed: Yes
Contiguous: Yes
Permitted: Yes
Wet Space: No
Addition: No
Conversion: No

**19 Abbington Terrace, Glen Rock, Bergen County,
New Jersey, United States, 07452****18 Floor 3 - Bedroom**

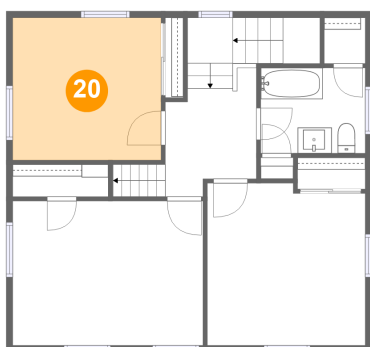
Dimensions: 14'9" x 11'2"
Area: 164 sq. ft
Counted as Living Area:
Yes

Heated: Yes
Finished: Yes
Enclosed: Yes
Contiguous:
Yes
Permitted: Yes
Wet Space: No
Addition: No
Conversion: No

19 Floor 3 - Hall

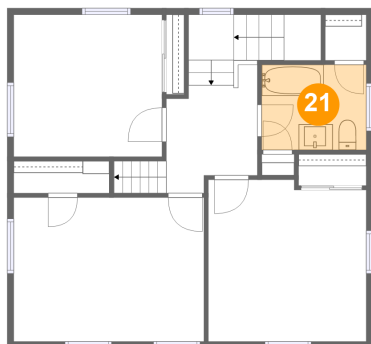
Dimensions: 7'0" x 8'7"
Area: 108 sq. ft
Counted as Living Area:
Yes

Heated: Yes
Finished: Yes
Enclosed: Yes
Contiguous:
Yes
Permitted: Yes
Wet Space: No
Addition: No
Conversion: No

20 Floor 3 - Bedroom

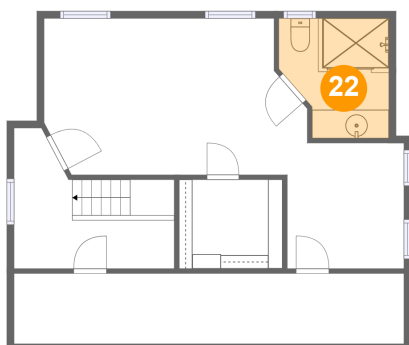
Dimensions: 11'6" x 11'0"
Area: 126 sq. ft
Counted as Living Area:
Yes

Heated: Yes
Finished: Yes
Enclosed: Yes
Contiguous:
Yes
Permitted: Yes
Wet Space: No
Addition: No
Conversion: No

**19 Abbington Terrace, Glen Rock, Bergen County,
New Jersey, United States, 07452****21 Floor 3 - Bath**

Dimensions: 8'1" x 6'7"
Area: 53 sq. ft
Counted as Living Area:
Yes

Heated: Yes
Finished: Yes
Enclosed: Yes
Contiguous:
Yes
Permitted: Yes
Wet Space: Yes
Addition: No
Conversion: No

22 Floor 4 - Bath

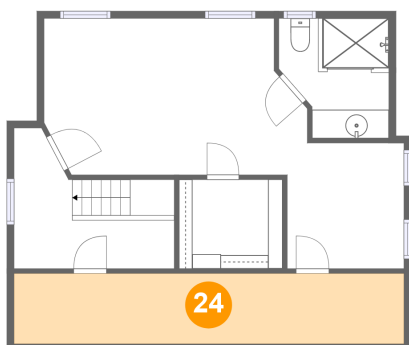
Dimensions: 7'5" x 8'5"
Area: 56 sq. ft
Counted as Living Area: No

Heated: Yes
Finished: Yes
Enclosed: Yes
Contiguous: Yes
Permitted: Yes
Wet Space: Yes
Addition: No
Conversion: No

23 Floor 4 - W.i.c.

Dimensions: 7'3" x 6'3"
Area: 45 sq. ft
Counted as Living Area: No

Heated: Yes
Finished: Yes
Enclosed: Yes
Contiguous: Yes
Permitted: Yes
Wet Space: No
Addition: No
Conversion: No

**19 Abbington Terrace, Glen Rock, Bergen County,
New Jersey, United States, 07452****24 Floor 4 - Attic**

Dimensions: 27'4" x 4'11"
Area: 134 sq. ft
Counted as Living Area: No

Heated: No
Finished: No
Enclosed: Yes
Contiguous: Yes
Permitted: Yes
Wet Space: No
Addition: No
Conversion: No

25 Floor 4 - Sitting Room

Dimensions: 8'2" x 8'9"
Area: 70 sq. ft
Counted as Living Area: Yes

Heated: Yes
Finished: Yes
Enclosed: Yes
Contiguous: Yes
Permitted: Yes
Wet Space: No
Addition: No
Conversion: No

26 Floor 4 - Primary Bedroom

Dimensions: 18'5" x 10'11"
Area: 185 sq. ft
Counted as Living Area: Yes

Heated: Yes
Finished: Yes
Enclosed: Yes
Contiguous: Yes
Permitted: Yes
Wet Space: No
Addition: No
Conversion: No

19 Abbington Terrace, Glen Rock, Bergen County, New Jersey, United States, 07452

27 Floor 4 - Hall



Dimensions: 11'3" x 9'10"
Area: 80 sq. ft
Counted as Living Area: No

Heated: Yes
Finished: Yes
Enclosed: Yes
Contiguous: Yes
Permitted: Yes
Wet Space: No
Addition: No
Conversion: No