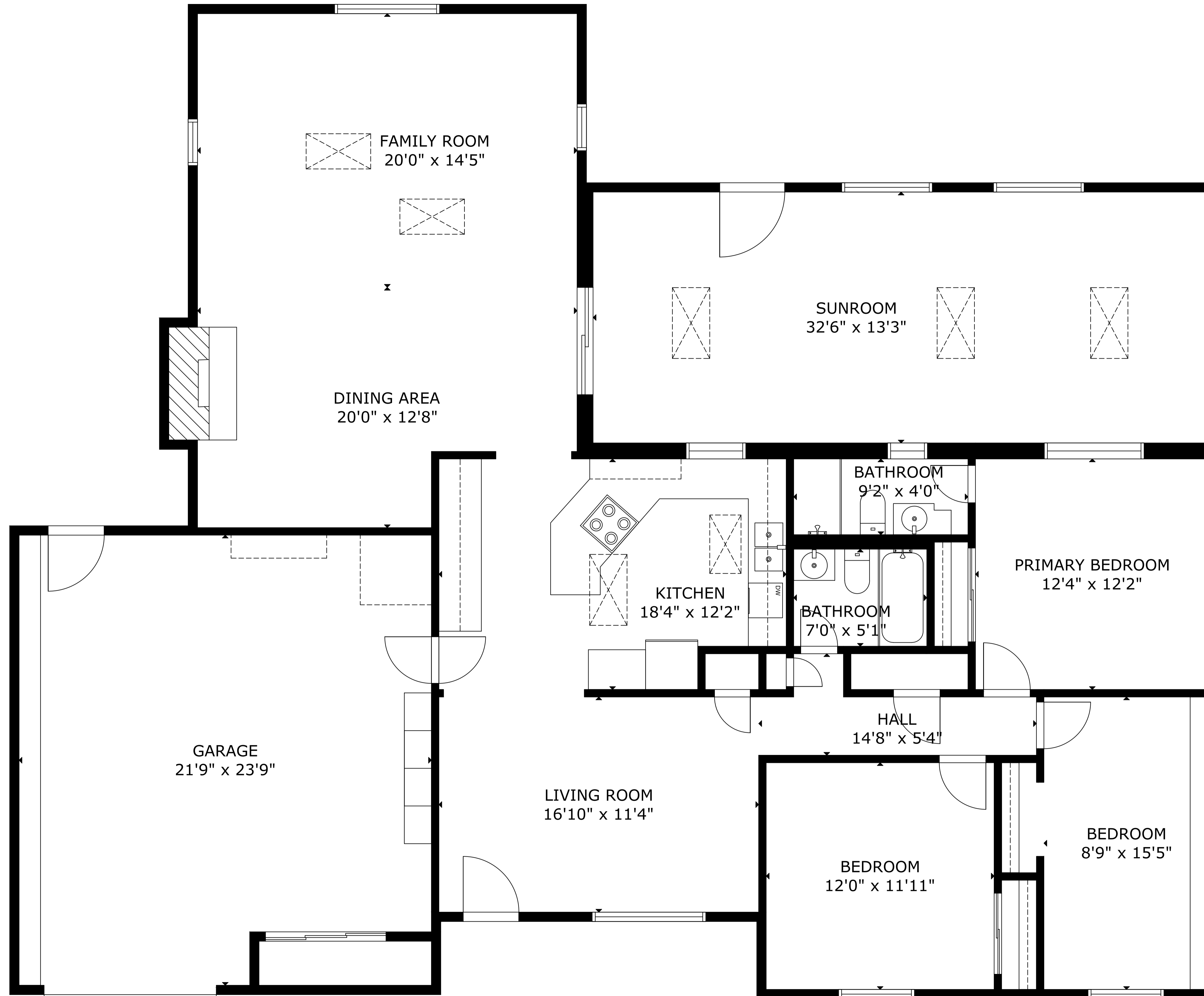


1304 Peyton Rd



GROSS EXTERNAL AREA

TOTAL: 1,698 sq ft

FLOOR 1: 1,698 sq ft

EXCLUDED AREAS: GARAGE: 516 sq ft, SUNROOM: 430 sq ft

SIZE AND DIMENSIONS ARE APPROXIMATE, ACTUAL MAY VARY