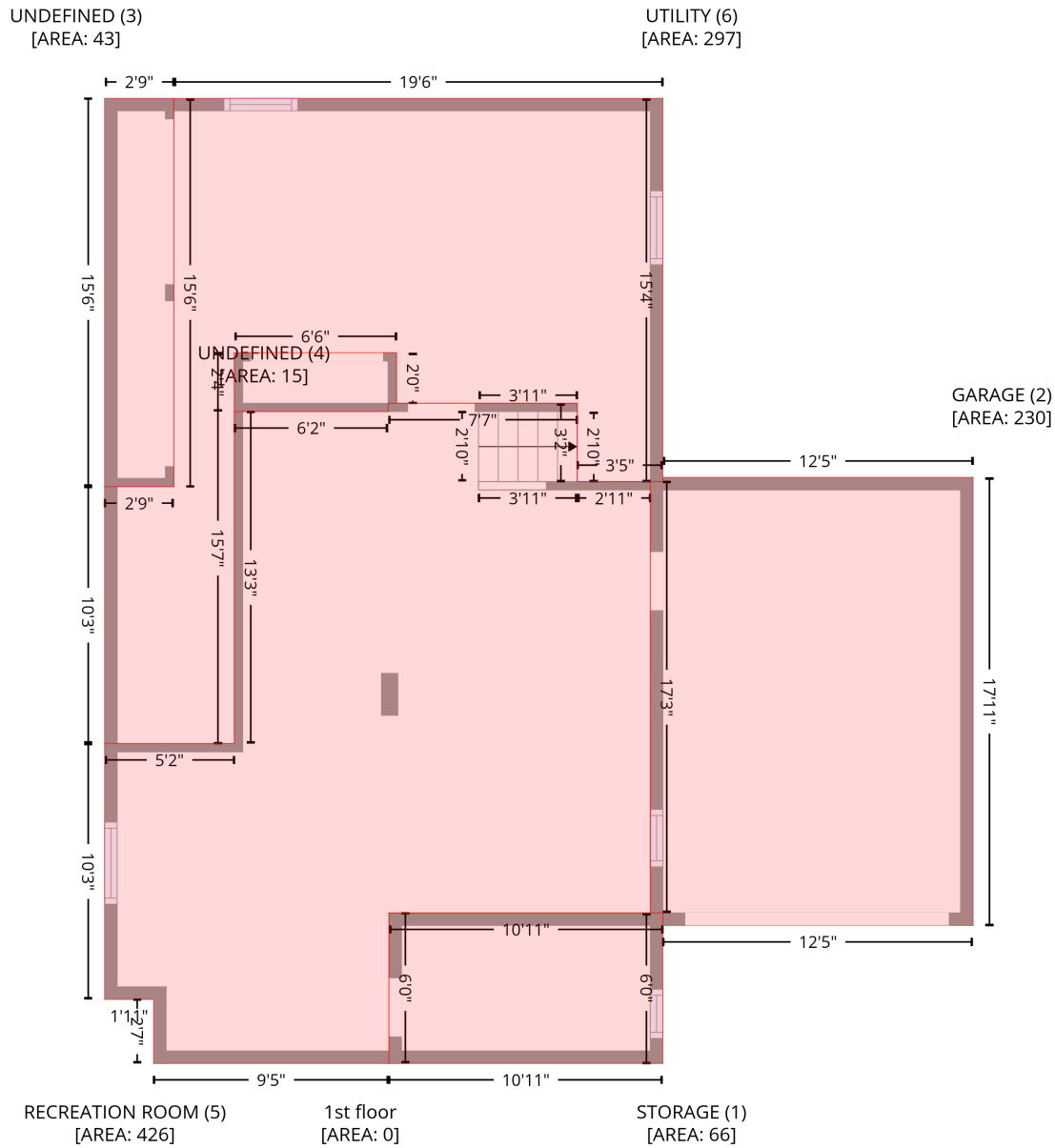


# 32 Miles Court, Kirkendall South, Hamilton, Ontario, Canada, L8P 4G6

Gross Living Area: 1209 sq. ft

## Level 1



Space	Area (sq. ft)	Calculation <small>Coordinate Polygon Area Algorithm using inches</small>
STORAGE (Non-living area)	66	$-\left((309.2 + 309.2) * (382.2 - 454.3) + (309.2 + 177.9) * (454.3 - 454.3) + (177.9 + 177.9) * (454.3 - 382.2) + (177.9 + 309.2) * (382.2 - 382.2)\right) * 0.5 * 0.00694$
GARAGE (Non-living area)	230	$-\left((458 + 458) * (173.4 - 388.2) + (458 + 309.2) * (388.2 - 388.2) + (309.2 + 309.2) * (388.2 - 382.2) + (309.2 + 303.2) * (382.2 - 382.2) + (303.2 + 303.2) * (382.2 - 175.4) + (303.2 + 309.2) * (175.4 - 175.4) + (309.2 + 309.2) * (175.4 - 173.4) + (309.2 + 458) * (173.4 - 173.4)\right) * 0.5 * 0.00694$

# 32 Miles Court, Kirkendall South, Hamilton, Ontario, Canada, L8P 4G6

Gross Living Area: 1209 sq. ft

## Level 1

Space	Area (sq. ft)	Calculation <small>Coordinate Polygon Area Algorithm using inches</small>
UNDEFINED (Non-living area)	43	$-\left((74.8 + 74.8) * (-8.4 - 177.8) + (74.8 + 41.6) * (177.8 - 177.8) + (41.6 + 41.6) * (177.8 - -8.4) + (41.6 + 74.8) * (-8.4 - -8.4)\right) * 0.5 * 0.00694$
UNDEFINED (Non-living area)	15	$-\left((181.5 + 181.5) * (113.6 - 137.8) + (181.5 + 177.5) * (137.8 - 137.8) + (177.5 + 177.5) * (137.8 - 141.8) + (177.5 + 103.8) * (141.8 - 141.8) + (103.8 + 103.8) * (141.8 - 113.6) + (103.8 + 181.5) * (113.6 - 113.6)\right) * 0.5 * 0.00694$
RECREATION ROOM (Non-living area)	426	$-\left((268.2 + 268.2) * (137.8 - 175.4) + (268.2 + 303.2) * (175.4 - 175.4) + (303.2 + 303.2) * (175.4 - 382.2) + (303.2 + 177.9) * (382.2 - 382.2) + (177.9 + 177.9) * (382.2 - 454.3) + (177.9 + 65.1) * (454.3 - 454.3) + (65.1 + 65.1) * (454.3 - 423.6) + (65.1 + 41.6) * (423.6 - 423.6) + (41.6 + 41.6) * (423.6 - 301) + (41.6 + 103.8) * (301 - 301) + (103.8 + 103.8) * (301 - 141.8) + (103.8 + 177.5) * (141.8 - 141.8) + (177.5 + 177.5) * (141.8 - 137.8) + (177.5 + 268.2) * (137.8 - 137.8)\right) * 0.5 * 0.00694$
UTILITY (Non-living area)	297	$-\left((309.2 + 309.2) * (-8.4 - 175.4) + (309.2 + 268.2) * (175.4 - 175.4) + (268.2 + 268.2) * (175.4 - 137.8) + (268.2 + 181.5) * (137.8 - 137.8) + (181.5 + 181.5) * (137.8 - 113.6) + (181.5 + 103.8) * (113.6 - 113.6) + (103.8 + 103.8) * (113.6 - 301) + (103.8 + 41.6) * (301 - 301) + (41.6 + 41.6) * (301 - 177.8) + (41.6 + 74.8) * (177.8 - 177.8) + (74.8 + 74.8) * (177.8 - -8.4) + (74.8 + 309.2) * (-8.4 - -8.4)\right) * 0.5 * 0.00694$

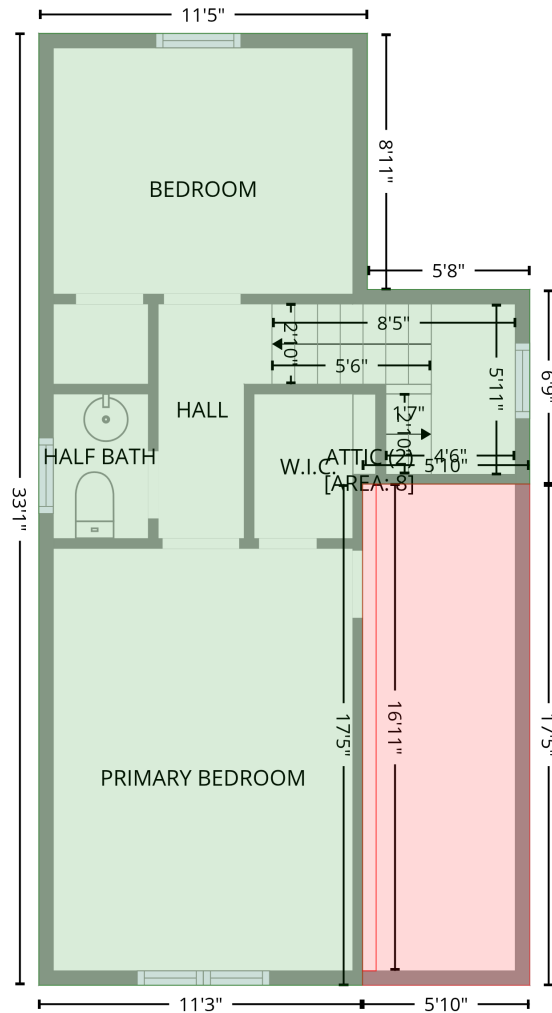


# 32 Miles Court, Kirkendall South, Hamilton, Ontario, Canada, L8P 4G6

Gross Living Area: 1209 sq. ft

## Level 3

3rd floor  
[AREA: 412]



LOW CEILING (1)  
[AREA: 93]

Space	Area (sq. ft)	Calculation <small>Coordinate Polygon Area Algorithm using inches</small>
3rd floor (Living area)	412	$-\left((241.6 + 241.6) * (-8.4 - 98.3) + (241.6 + 309.2) * (98.3 - 98.3) + (309.2 + 309.2) * (98.3 - 179.4) + (309.2 + 239.6) * (179.4 - 179.4) + (239.6 + 239.6) * (179.4 - 388.2) + (239.6 + 104.8) * (388.2 - 388.2) + (104.8 + 104.8) * (388.2 - -8.4) + (104.8 + 241.6) * (-8.4 - -8.4)\right) * 0.5 * 0.00694$
LOW CEILING (Non-living area)	93	$-\left((309.2 + 309.2) * (179.4 - 388.2) + (309.2 + 239.6) * (388.2 - 388.2) + (239.6 + 239.6) * (388.2 - 382.2) + (239.6 + 245.3) * (382.2 - 382.2) + (245.3 + 245.3) * (382.2 - 179.4) + (245.3 + 309.2) * (179.4 - 179.4)\right) * 0.5 * 0.00694$

# 32 Miles Court, Kirkendall South, Hamilton, Ontario, Canada, L8P 4G6

Gross Living Area: 1209 sq. ft

## Level 3

Space	Area (sq. ft)	Calculation <small>Coordinate Polygon Area Algorithm using inches</small>
ATTIC (Non-living area)	8	$-\left(\left(245.3 + 245.3\right) * \left(179.4 - 382.2\right) + \left(245.3 + 239.6\right) * \left(382.2 - 382.2\right) + \left(239.6 + 239.6\right) * \left(382.2 - 179.4\right) + \left(239.6 + 245.3\right) * \left(179.4 - 179.4\right)\right) * 0.5 * 0.00694$