

# 102 Lulworth Court, Cary, Wake County, North Carolina, United States, 27519

Gross Living Area: 2182 sq. ft



Space	Area (sq. ft)	Calculation <small>Coordinate Polygon Area Algorithm using inches</small>
FLOOR 1 (Living area)	1835	$-((582.9 + 582.9) * (59.2 - 134.8) + (582.9 + 771.5) * (134.8 - 134.8) + (771.5 + 771.5) * (134.8 - 521.7) + (771.5 + 334) * (521.7 - 521.7) + (334 + 334) * (521.7 - 467.6) + (334 + 283.8) * (467.6 - 467.6) + (283.8 + 283.8) * (467.6 - 521.7) + (283.8 + 109.8) * (521.7 - 521.7) + (109.8 + 109.8) * (521.7 - 134.8) + (109.8 + 438.7) * (134.8 - 134.8) + (438.7 + 438.7) * (134.8 - 59.2) + (438.7 + 582.9) * (59.2 - 59.2)) * 0.5 + 0.00694$
GARAGE	455	$-((749.3 + 749.3) * (521.7 - 756.8) + (749.3 + 470.5) * (756.8 - 756.8) + (470.5 + 470.5) * (756.8 -$

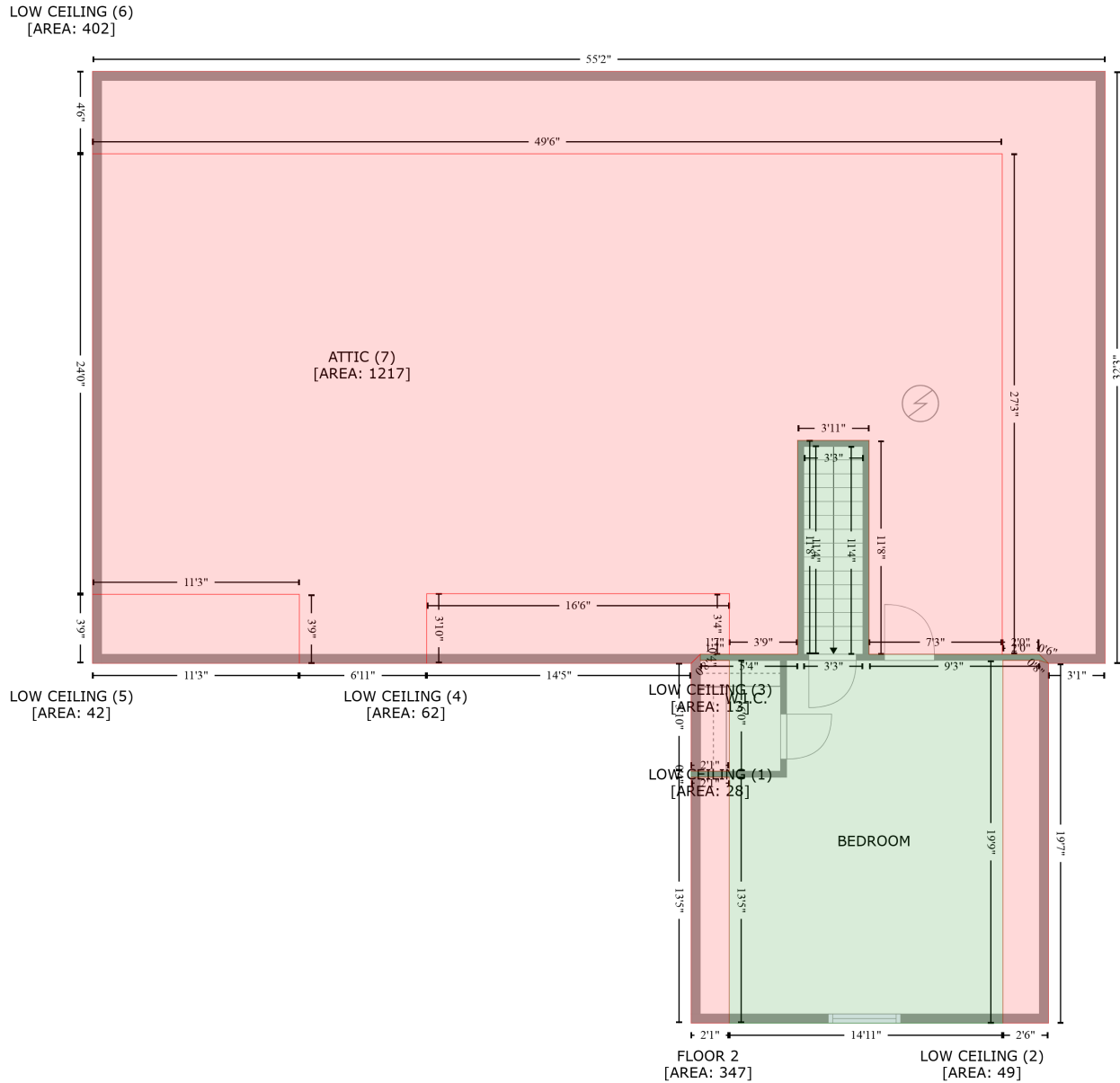
# 102 Lulworth Court, Cary, Wake County, North Carolina, United States, 27519

Gross Living Area: 2182 sq. ft

Space	Area (sq. ft)	Calculation <small>Coordinate Polygon Area Algorithm using inches</small>
(Non-living area)		$521.7 + (470.5 + 749.3) * (521.7 - 521.7)) * 0.5 * 0.00694$
PORCH (Non-living area)	19	$-((334 + 334) * (467.6 - 521.7) + (334 + 283.8) * (521.7 - 521.3) + (283.8 + 283.8) * (521.3 - 467.6) + (283.8 + 334) * (467.6 - 467.6)) * 0.5 * 0.00694$
DECK (Non-living area)	211	$-((439 + 438.7) * (-37.2 - 134.8) + (438.7 + 399.5) * (134.8 - 134.8) + (399.5 + 399.5) * (134.8 - 101) + (399.5 + 334) * (101 - 101) + (334 + 334) * (101 - 134.8) + (334 + 249.4) * (134.8 - 134.8) + (249.4 + 249.4) * (134.8 - -37.2) + (249.4 + 439) * (-37.2 - -37.2)) * 0.5 * 0.00694$
FIREPLACE (Non-living area)	15	$-((399.5 + 399.5) * (101 - 134.8) + (399.5 + 334) * (134.8 - 134.8) + (334 + 334) * (134.8 - 101) + (334 + 399.5) * (101 - 101)) * 0.5 * 0.00694$

# 102 Lulworth Court, Cary, Wake County, North Carolina, United States, 27519

Gross Living Area: 2182 sq. ft



## Space

Area (sq. ft)

Calculation Coordinate Polygon Area Algorithm using inches

FLOOR 2  
(Living area)

347

$$\begin{aligned}
 & -((610.8 + 610.8) * (369.3 - 509.1) + (610.8 + 722.1) * (509.1 - 509.1) + (722.1 + 728.1) * (509.1 - \\
 & 515.1) + (728.1 + 722.1) * (515.1 - 513.1) + (722.1 + 698.3) * (513.1 - 513.1) + (698.3 + 698.3) * \\
 & (513.1 - 750.2) + (698.3 + 519.4) * (750.2 - 750.2) + (519.4 + 519.4) * (750.2 - 589.4) + (519.4 + \\
 & 494.5) * (589.4 - 589.4) + (494.5 + 494.5) * (589.4 - 585.4) + (494.5 + 519.5) * (585.4 - 585.4) + \\
 & (519.5 + 519.5) * (585.4 - 513.1) + (519.5 + 500.5) * (513.1 - 513.1) + (500.5 + 500.5) * (513.1 - \\
 & 509.1) + (500.5 + 564.2) * (509.1 - 509.1) + (564.2 + 564.2) * (509.1 - 369.3) + (564.2 + 610.8) * \\
 & (369.3 - 369.3)) * 0.5 * 0.00694
 \end{aligned}$$

# 102 Lulworth Court, Cary, Wake County, North Carolina, United States, 27519

Gross Living Area: 2182 sq. ft

Space	Area (sq. ft)	Calculation <small>Coordinate Polygon Area Algorithm using inches</small>
LOW CEILING (Non-living area)	28	$-((519.4 + 519.4) * (589.4 - 750.2) + (519.4 + 494.5) * (750.2 - 750.2) + (494.5 + 494.5) * (750.2 - 589.4) + (494.5 + 519.4) * (589.4 - 589.4)) * 0.5 * 0.00694$
LOW CEILING (Non-living area)	49	$-((722.1 + 728.1) * (513.1 - 515.1) + (728.1 + 728.1) * (515.1 - 750.2) + (728.1 + 698.3) * (750.2 - 750.2) + (698.3 + 698.3) * (750.2 - 513.1) + (698.3 + 722.1) * (513.1 - 513.1)) * 0.5 * 0.00694$
LOW CEILING (Non-living area)	13	$-((500.5 + 500.5) * (509.1 - 513.1) + (500.5 + 519.5) * (513.1 - 513.1) + (519.5 + 519.5) * (513.1 - 585.4) + (519.5 + 494.5) * (585.4 - 585.4) + (494.5 + 494.5) * (585.4 - 515.1) + (494.5 + 500.5) * (515.1 - 509.1)) * 0.5 * 0.00694$
LOW CEILING (Non-living area)	62	$-((519.5 + 519.5) * (469.5 - 509.1) + (519.5 + 500.5) * (509.1 - 509.1) + (500.5 + 494.5) * (509.1 - 515.1) + (494.5 + 321.8) * (515.1 - 515.1) + (321.8 + 321.8) * (515.1 - 469.5) + (321.8 + 519.5) * (469.5 - 469.5)) * 0.5 * 0.00694$
LOW CEILING (Non-living area)	42	$-((238.6 + 238.6) * (469.9 - 515.1) + (238.6 + 103.4) * (515.1 - 515.1) + (103.4 + 103.4) * (515.1 - 469.9) + (103.4 + 238.6) * (469.9 - 469.9)) * 0.5 * 0.00694$
LOW CEILING (Non-living area)	402	$-((765 + 765) * (128.2 - 515.1) + (765 + 728.1) * (515.1 - 515.1) + (728.1 + 722.1) * (515.1 - 509.1) + (722.1 + 697.8) * (509.1 - 509.1) + (697.8 + 697.8) * (509.1 - 182) + (697.8 + 103.4) * (182 - 182) + (103.4 + 103.4) * (182 - 128.2) + (103.4 + 765) * (128.2 - 128.2)) * 0.5 * 0.00694$
ATTIC (Non-living area)	1217	$-((697.8 + 697.8) * (182 - 509.1) + (697.8 + 610.8) * (509.1 - 509.1) + (610.8 + 610.8) * (509.1 - 369.3) + (610.8 + 564.2) * (369.3 - 369.3) + (564.2 + 564.2) * (369.3 - 509.1) + (564.2 + 519.5) * (509.1 - 509.1) + (519.5 + 519.5) * (509.1 - 469.5) + (519.5 + 321.8) * (469.5 - 469.5) + (321.8 + 321.8) * (469.5 - 515.1) + (321.8 + 238.6) * (515.1 - 515.1) + (238.6 + 238.6) * (515.1 - 469.9) + (238.6 + 103.4) * (469.9 - 469.9) + (103.4 + 103.4) * (469.9 - 182) + (103.4 + 697.8) * (182 - 182)) * 0.5 * 0.00694$