

Home report

3220 Pasley Avenue Southwest, Franklin, Roanoke, Roanoke city, Virginia, United States, 24015




Total Area: 1735 sq. ft

Below Ground: 0 sq. ft, Floor 2: 1735 sq. ft

Excluded: Storage 65 sq. ft, Basement 1243 sq. ft, Utility 237 sq. ft, Garage 461 sq. ft, Outdoor Porch 27 sq. ft, Outdoor Deck 201 sq. ft, Fireplace 11 sq. ft

Property summary

 2 Floors

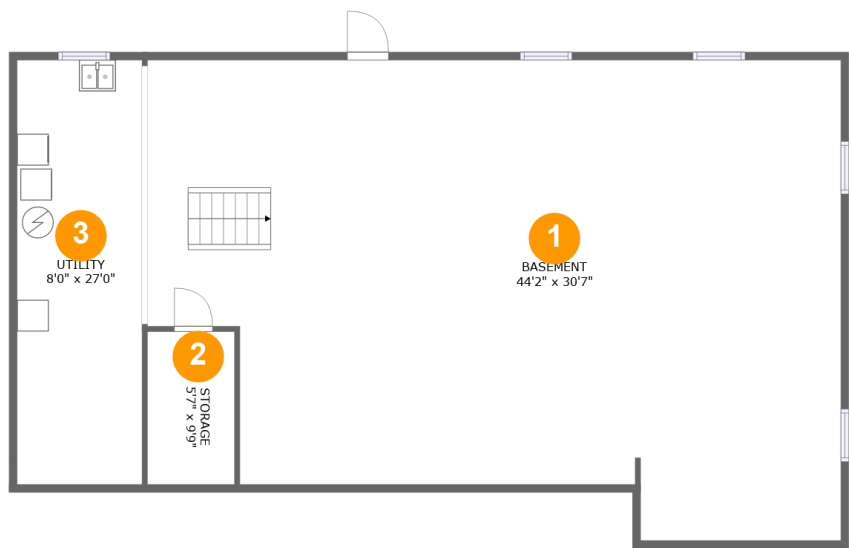
 3 Bedrooms

 2 Bathrooms

 1 Garages

Home report

3220 Pasley Avenue Southwest, Franklin, Roanoke, Roanoke city, Virginia, United States, 24015



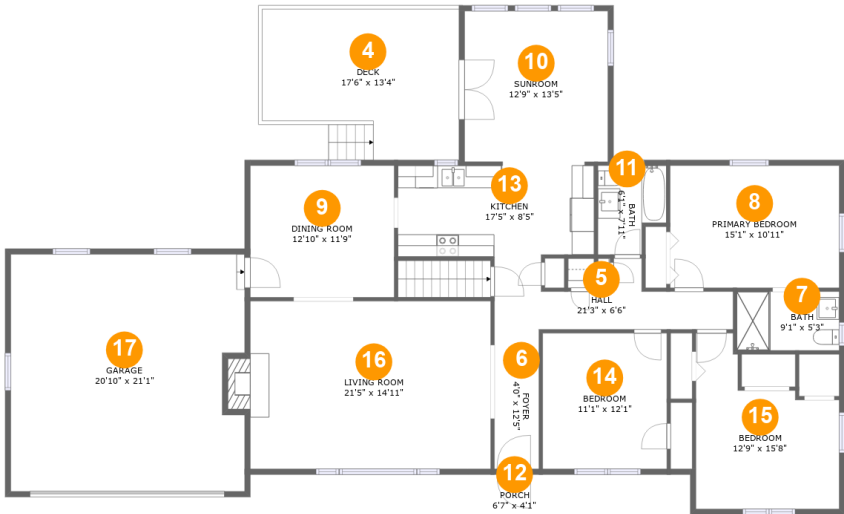
Room dimensions

Floor 1 Below ground Total:0sqft Excluded: 1545sqft

#		Max Dimensions	sqft	Included
1	Basement	44'2" x 30'7"	1178 sq. ft	No
2	Storage	5'7" x 9'9"	54 sq. ft	No
3	Utility	8'0" x 27'0"	215 sq. ft	No

Home report

3220 Pasley Avenue Southwest, Franklin, Roanoke, Roanoke city, Virginia, United States, 24015



Room dimensions

Floor 2 Total:1735sqft Excluded: 700sqft

#		Max Dimensions	sqft	Included
4	Deck	17'6" x 13'4"	201 sq. ft	No
5	Hall	21'3" x 6'6"	92 sq. ft	Yes
6	Foyer	4'0" x 12'5"	49 sq. ft	Yes
7	Bath	9'1" x 5'3"	48 sq. ft	Yes
8	Primary Bedroom	15'1" x 10'11"	164 sq. ft	Yes
9	Dining Room	12'10" x 11'9"	150 sq. ft	Yes
10	Sunroom	12'9" x 13'5"	171 sq. ft	Yes
11	Bath	6'1" x 7'11"	42 sq. ft	Yes
12	Porch	6'7" x 4'1"	27 sq. ft	No
13	Kitchen	17'5" x 8'5"	143 sq. ft	Yes
14	Bedroom	11'1" x 12'1"	134 sq. ft	Yes

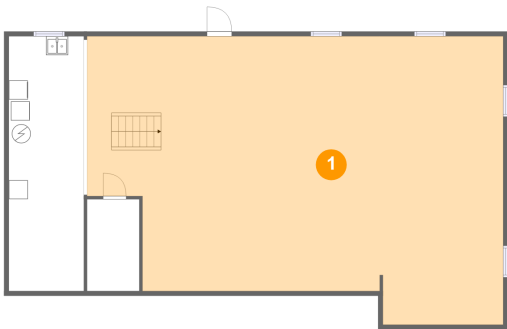
Home report

3220 Pasley Avenue Southwest, Franklin, Roanoke, Roanoke city, Virginia, United States, 24015

#		Max Dimensions	sqft	Included
15	Bedroom	12'9" x 15'8"	150 sq. ft	Yes
16	Living Room	21'5" x 14'11"	329 sq. ft	Yes
17	Garage	20'10" x 21'1"	428 sq. ft	No

3220 Pasley Avenue Southwest, Franklin, Roanoke, Roanoke city, Virginia, United States, 24015

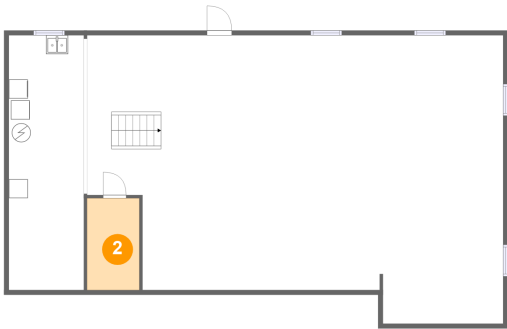
1 Floor 1 - Basement



Max Dimensions: 44'2" x 30'7"
Calculated Area: 1178 sq. ft
Included: No

Heated: Yes
Finished: No
Enclosed: Yes
Contiguous: Yes
Permitted: Yes
Wet space: No
Addition: No
Conversion: No

2 Floor 1 - Storage

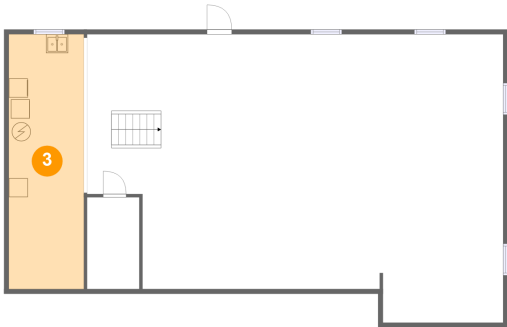


Max Dimensions: 5'7" x 9'9"
Calculated Area: 54 sq. ft
Included: No

Heated: No
Finished: No
Enclosed: No
Contiguous: Yes
Permitted: Yes
Wet space: No
Addition: No
Conversion: No

3220 Pasley Avenue Southwest, Franklin, Roanoke, Roanoke city, Virginia, United States, 24015

3 Floor 1 - Utility



Max Dimensions: 8'0" x 27'0"
Calculated Area: 215 sq. ft
Included: No

Heated: Yes
Finished: No
Enclosed: Yes
Contiguous: Yes
Permitted: Yes
Wet space: No
Addition: No
Conversion: No

4 Floor 2 - Deck



Max Dimensions: 17'6" x 13'4"
Calculated Area: 201 sq. ft
Included: No

Heated: No
Finished: Yes
Enclosed: No
Contiguous: Yes
Permitted: Yes
Wet space: No
Addition: No
Conversion: No

5 Floor 2 - Hall



Max Dimensions: 21'3" x 6'6"
Calculated Area: 92 sq. ft
Included: Yes

Heated: Yes
Finished: Yes
Enclosed: Yes
Contiguous: Yes
Permitted: Yes
Wet space: No
Addition: No
Conversion: No

3220 Pasley Avenue Southwest, Franklin, Roanoke, Roanoke city, Virginia, United States, 24015

6 Floor 2 - Foyer



Max Dimensions: 4'0" x 12'5"
Calculated Area: 49 sq. ft
Included: Yes

Heated: Yes
Finished: Yes
Enclosed: Yes
Contiguous: Yes
Permitted: Yes
Wet space: No
Addition: No
Conversion: No

7 Floor 2 - Bath



Max Dimensions: 9'1" x 5'3"
Calculated Area: 48 sq. ft
Included: Yes

Heated: Yes
Finished: Yes
Enclosed: Yes
Contiguous: Yes
Permitted: Yes
Wet space: Yes
Addition: No
Conversion: No

8 Floor 2 - Primary Bedroom



Max Dimensions: 15'1" x 10'11"
Calculated Area: 164 sq. ft
Included: Yes

Heated: Yes
Finished: Yes
Enclosed: Yes
Contiguous: Yes
Permitted: Yes
Wet space: No
Addition: No
Conversion: No

3220 Pasley Avenue Southwest, Franklin, Roanoke, Roanoke city, Virginia, United States, 24015

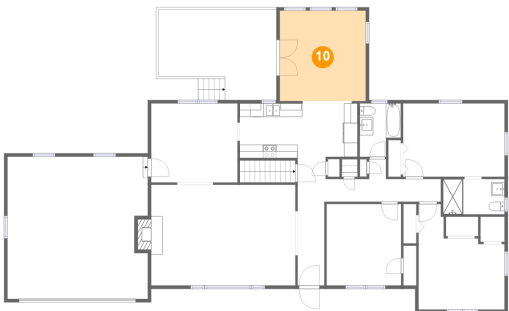
9 Floor 2 - Dining Room



Max Dimensions: 12'10" x 11'9"
Calculated Area: 150 sq. ft
Included: Yes

Heated: Yes
Finished: Yes
Enclosed: Yes
Contiguous: Yes
Permitted: Yes
Wet space: No
Addition: No
Conversion: No

10 Floor 2 - Sunroom



Max Dimensions: 12'9" x 13'5"
Calculated Area: 171 sq. ft
Included: Yes

Heated: Yes
Finished: Yes
Enclosed: Yes
Contiguous: Yes
Permitted: Yes
Wet space: No
Addition: No
Conversion: No

11 Floor 2 - Bath



Max Dimensions: 6'1" x 7'11"
Calculated Area: 42 sq. ft
Included: Yes

Heated: Yes
Finished: Yes
Enclosed: Yes
Contiguous: Yes
Permitted: Yes
Wet space: Yes
Addition: No
Conversion: No

3220 Pasley Avenue Southwest, Franklin, Roanoke, Roanoke city, Virginia, United States, 24015

12 Floor 2 - Porch



Max Dimensions: 6'7" x 4'1"
Calculated Area: 27 sq. ft
Included: No

Heated: No
Finished: Yes
Enclosed: No
Contiguous: Yes
Permitted: Yes
Wet space: No
Addition: No
Conversion: No

13 Floor 2 - Kitchen



Max Dimensions: 17'5" x 8'5"
Calculated Area: 143 sq. ft
Included: Yes

Heated: Yes
Finished: Yes
Enclosed: Yes
Contiguous: Yes
Permitted: Yes
Wet space: No
Addition: No
Conversion: No

14 Floor 2 - Bedroom



Max Dimensions: 11'1" x 12'1"
Calculated Area: 134 sq. ft
Included: Yes

Heated: Yes
Finished: Yes
Enclosed: Yes
Contiguous: Yes
Permitted: Yes
Wet space: No
Addition: No
Conversion: No

3220 Pasley Avenue Southwest, Franklin, Roanoke, Roanoke city, Virginia, United States, 24015

15 Floor 2 - Bedroom



Max Dimensions: 12'9" x 15'8"
Calculated Area: 150 sq. ft
Included: Yes

Heated: Yes
Finished: Yes
Enclosed: Yes
Contiguous: Yes
Permitted: Yes
Wet space: No
Addition: No
Conversion: No

16 Floor 2 - Living Room



Max Dimensions: 21'5" x 14'11"
Calculated Area: 329 sq. ft
Included: Yes

Heated: Yes
Finished: Yes
Enclosed: Yes
Contiguous: Yes
Permitted: Yes
Wet space: No
Addition: No
Conversion: No

17 Floor 2 - Garage



Max Dimensions: 20'10" x 21'1"
Calculated Area: 428 sq. ft
Included: No

Heated: No
Finished: No
Enclosed: Yes
Contiguous: Yes
Permitted: Yes
Wet space: No
Addition: No
Conversion: No