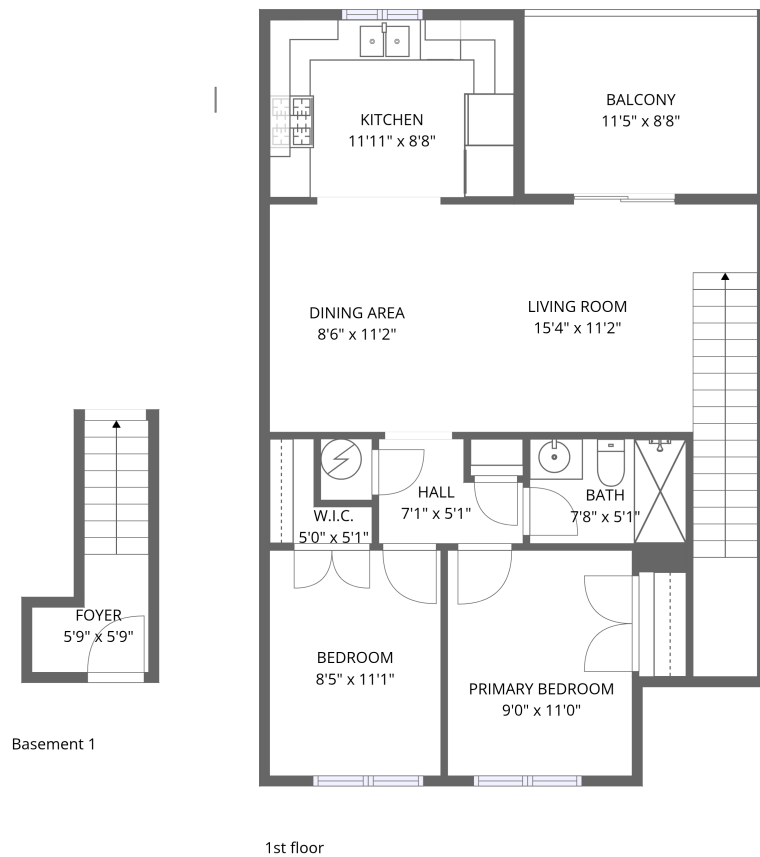


Home data report

103 Catron St #58, Santa Fe, NM, US




Total Area: 794 sq. ft

Below Ground: 47 sq. ft, 1st Floor: 747 sq. ft

Excluded: Balcony 99 sq. ft, Walls: 74 sq. ft

Property summary

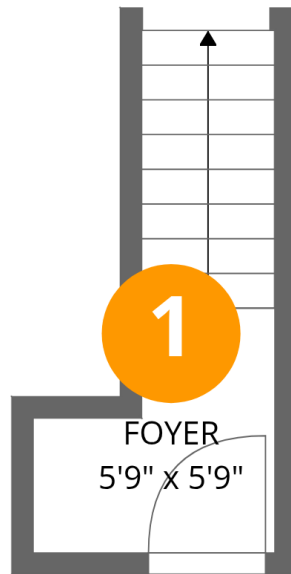
 **2** Floors

 **2** Bedrooms

 **1** Bathrooms

Home data report

103 Catron St #58,Santa Fe,NM,US



Room dimensions

Floor 1 Below grade

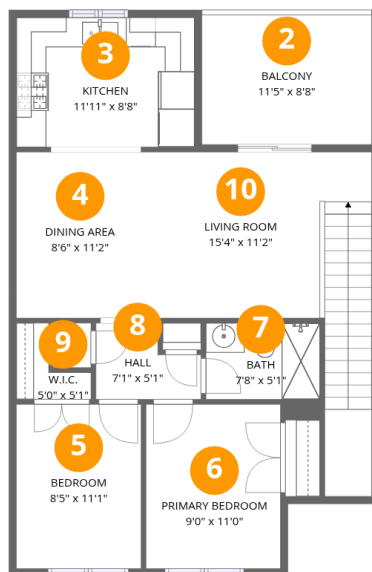
Total:47sqft

Excluded: 0sqft

#		Dimensions	sqft	Counted as living area
1	Foyer	5'9" x 5'9"	47 sq. ft	Yes

Home data report

103 Catron St #58,Santa Fe,NM,US



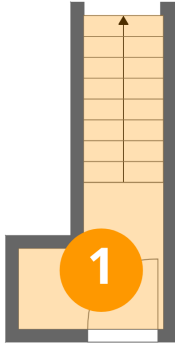
Room dimensions

Floor 2

Total:747sqft Excluded: 99sqft

#		Dimensions	sqft	Counted as living area
2	Balcony	11'5" x 8'8"	99 sq. ft	No
3	Kitchen	11'11" x 8'8"	104 sq. ft	Yes
4	Dining Area	8'6" x 11'2"	96 sq. ft	Yes
5	Bedroom	8'5" x 11'1"	93 sq. ft	Yes
6	Primary Bedroom	9'0" x 11'0"	100 sq. ft	Yes
7	Bath	7'8" x 5'1"	39 sq. ft	Yes
8	Hall	7'1" x 5'1"	30 sq. ft	Yes
9	W.I.C.	5'0" x 5'1"	16 sq. ft	Yes
10	Living Room	15'4" x 11'2"	144 sq. ft	Yes

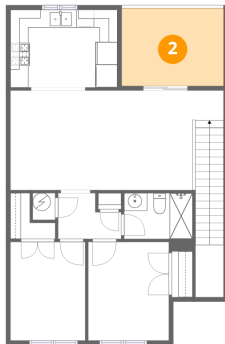
1 Floor 1 - Foyer



Dimensions: 5'9" x 5'9"
Area: 47 sq. ft
Counted as living area: Yes

Heated: Yes
Finished: Yes
Enclosed: Yes
Contiguous: Yes
Permitted: Yes
Wet space: No
Addition: No
Conversion: No

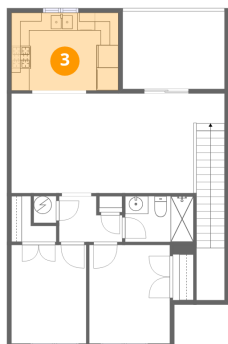
2 Floor 2 - Balcony



Dimensions: 11'5" x 8'8"
Area: 99 sq. ft
Counted as living area: No

Heated: No
Finished: No
Enclosed: No
Contiguous: Yes
Permitted: Yes
Wet space: No
Addition: No
Conversion: No

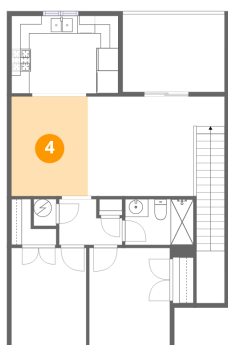
3 Floor 2 - Kitchen



Dimensions: 11'11" x 8'8"
Area: 104 sq. ft
Counted as living area: Yes

Heated: Yes
Finished: Yes
Enclosed: Yes
Contiguous: Yes
Permitted: Yes
Wet space: No
Addition: No
Conversion: No

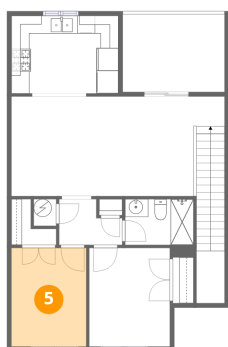
4 Floor 2 - Dining Area



Dimensions: 8'6" x 11'2"
Area: 96 sq. ft
Counted as living area: Yes

Heated: Yes
Finished: Yes
Enclosed: Yes
Contiguous: Yes
Permitted: Yes
Wet space: No
Addition: No
Conversion: No

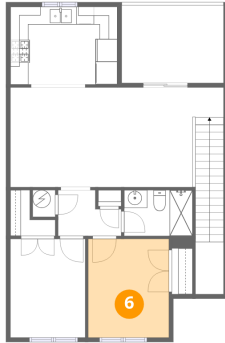
5 Floor 2 - Bedroom



Dimensions: 8'5" x 11'1"
Area: 93 sq. ft
Counted as living area: Yes

Heated: Yes
Finished: Yes
Enclosed: Yes
Contiguous: Yes
Permitted: Yes
Wet space: No
Addition: No
Conversion: No

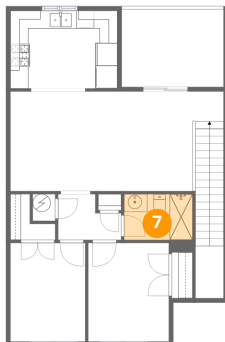
6 Floor 2 - Primary Bedroom



Dimensions: 9'0" x 11'0"
Area: 100 sq. ft
Counted as living area: Yes

Heated: Yes
Finished: Yes
Enclosed: Yes
Contiguous: Yes
Permitted: Yes
Wet space: No
Addition: No
Conversion: No

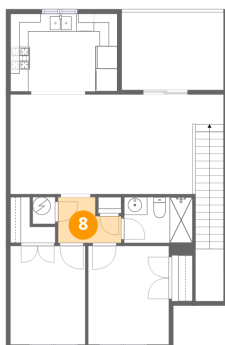
7 Floor 2 - Bath



Dimensions: 7'8" x 5'1"
Area: 39 sq. ft
Counted as living area: Yes

Heated: Yes
Finished: Yes
Enclosed: Yes
Contiguous: Yes
Permitted: Yes
Wet space: Yes
Addition: No
Conversion: No

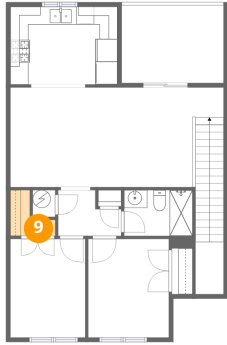
8 Floor 2 - Hall



Dimensions: 7'1" x 5'1"
Area: 30 sq. ft
Counted as living area: Yes

Heated: Yes
Finished: Yes
Enclosed: Yes
Contiguous: Yes
Permitted: Yes
Wet space: No
Addition: No
Conversion: No

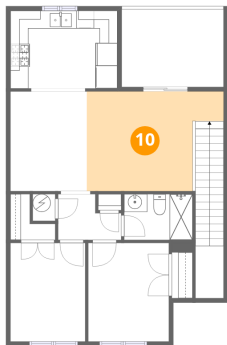
9 Floor 2 - W.I.C.



Dimensions: 5'0" x 5'1"
Area: 16 sq. ft
Counted as living area: Yes

Heated: Yes
Finished: Yes
Enclosed: Yes
Contiguous: Yes
Permitted: Yes
Wet space: No
Addition: No
Conversion: No

10 Floor 2 - Living Room



Dimensions: 15'4" x 11'2"
Area: 144 sq. ft
Counted as living area: Yes

Heated: Yes
Finished: Yes
Enclosed: Yes
Contiguous: Yes
Permitted: Yes
Wet space: No
Addition: No
Conversion: No