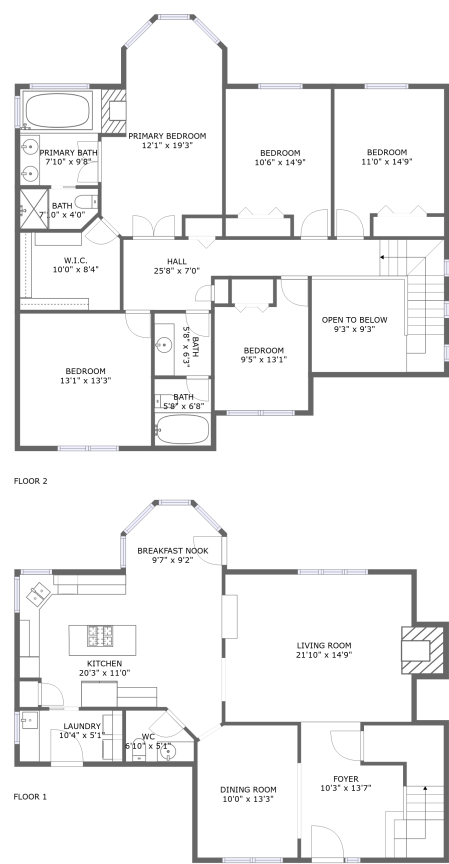



Home report


2737 Fillmore Avenue Northwest, Salem, Oregon 97304, United States




Property summary




0
Garages



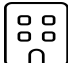
5
Bedrooms




2
Bathrooms




1
Half baths



2
Floors



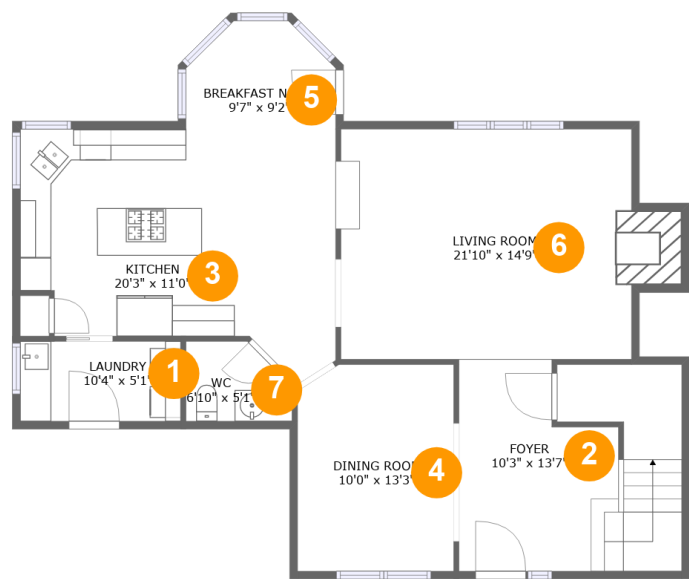
2,454
Gross living
area sqft



2,654
Total sqft

Home report

2737 Fillmore Avenue Northwest, Salem, Oregon 97304, United States



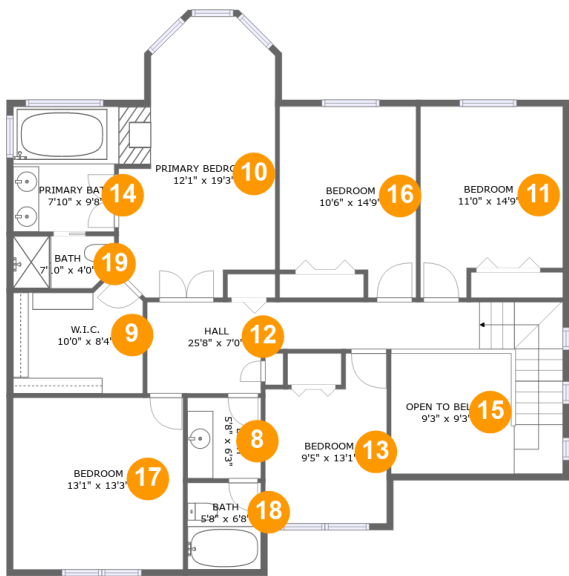
Room dimensions

Floor 1 Total sqft: 1134 Living area: 1102

#		Dimensions	sqft	Counted as living area
1	Laundry	10'4" x 5'1"	53 sq. ft	Yes
2	Foyer	10'3" x 13'7"	181 sq. ft	Yes
3	Kitchen	20'3" x 11'0"	251 sq. ft	Yes
4	Dining Room	10'0" x 13'3"	130 sq. ft	Yes
5	Breakfast Nook	9'7" x 9'2"	79 sq. ft	Yes
6	Living Room	21'10" x 14'9"	292 sq. ft	Yes
7	WC	6'10" x 5'1"	31 sq. ft	Yes

Home report

2737 Fillmore Avenue Northwest, Salem, Oregon 97304, United States



Room dimensions

Floor 2 Total sqft: 1520 Living area: 1352

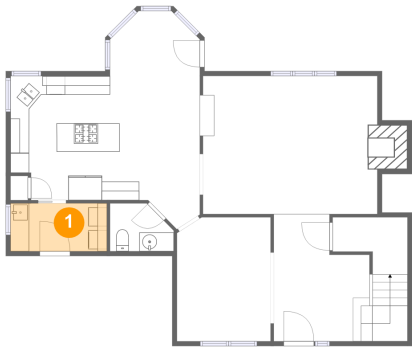
#		Dimensions	sqft	Counted as living area
8	Bath	5'8" x 6'3"	35 sq. ft	Yes
9	W.I.C.	10'0" x 8'4"	80 sq. ft	Yes
10	Primary Bedroom	12'1" x 19'3"	204 sq. ft	Yes
11	Bedroom	11'0" x 14'9"	145 sq. ft	Yes
12	Hall	25'8" x 7'0"	189 sq. ft	Yes
13	Bedroom	9'5" x 13'1"	106 sq. ft	Yes
14	Primary Bath	7'10" x 9'8"	75 sq. ft	Yes
15	Open To Below	9'3" x 9'3"	86 sq. ft	No
16	Bedroom	10'6" x 14'9"	141 sq. ft	Yes
17	Bedroom	13'1" x 13'3"	126 sq. ft	Yes
18	Bath	5'8" x 6'8"	38 sq. ft	Yes

Home report

2737 Fillmore Avenue Northwest, Salem, Oregon 97304, United States

#		Dimensions	sqft	Counted as living area
19	Bath	7'10" x 4'0"	30 sq. ft	Yes

1 Floor 1 - Laundry



Dimensions: 10'4" x 5'1"
Area: 53 sq. ft
Counted as living area: Yes

Heated: Yes
Finished: Yes
Enclosed: Yes
Contiguous: Yes
Permitted: Yes
Wet space: No
Addition: No
Conversion: No

2 Floor 1 - Foyer



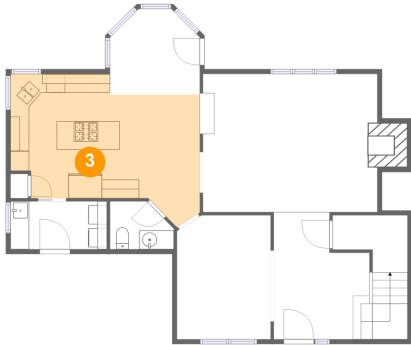
Dimensions: 10'3" x 13'7"
Area: 181 sq. ft
Counted as living area: Yes

Heated: Yes
Finished: Yes
Enclosed: Yes
Contiguous: Yes
Permitted: Yes
Wet space: No
Addition: No
Conversion: No

Home report

2737 Fillmore Avenue Northwest, Salem, Oregon 97304, United States

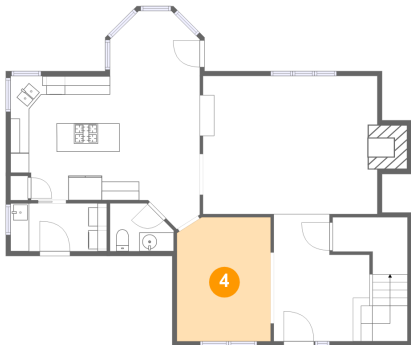
3 Floor 1 - Kitchen



Dimensions: 20'3" x 11'0"
Area: 251 sq. ft
Counted as living area: Yes

Heated: Yes
Finished: Yes
Enclosed: Yes
Contiguous: Yes
Permitted: Yes
Wet space: No
Addition: No
Conversion: No

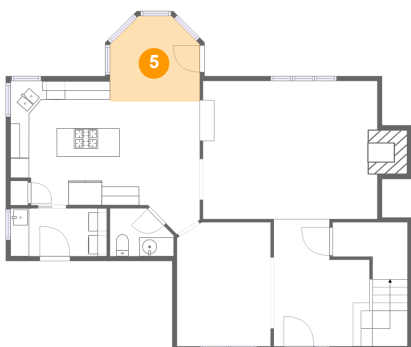
4 Floor 1 - Dining Room



Dimensions: 10'0" x 13'3"
Area: 130 sq. ft
Counted as living area: Yes

Heated: Yes
Finished: Yes
Enclosed: Yes
Contiguous: Yes
Permitted: Yes
Wet space: No
Addition: No
Conversion: No

5 Floor 1 - Breakfast Nook



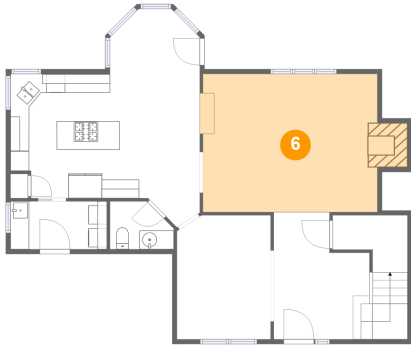
Dimensions: 9'7" x 9'2"
Area: 79 sq. ft
Counted as living area: Yes

Heated: Yes
Finished: Yes
Enclosed: Yes
Contiguous: Yes
Permitted: Yes
Wet space: No
Addition: No
Conversion: No

Home report

2737 Fillmore Avenue Northwest, Salem, Oregon 97304, United States

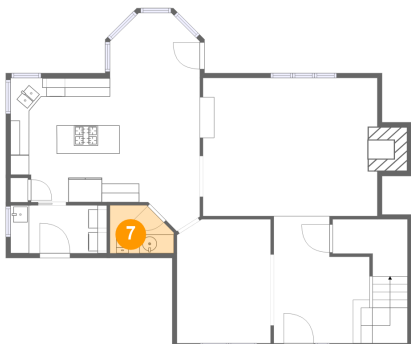
6 Floor 1 - Living Room



Dimensions: 21'10" x 14'9"
Area: 292 sq. ft
Counted as living area: Yes

Heated: Yes
Finished: Yes
Enclosed: Yes
Contiguous: Yes
Permitted: Yes
Wet space: No
Addition: No
Conversion: No

7 Floor 1 - WC



Dimensions: 6'10" x 5'1"
Area: 31 sq. ft
Counted as living area: Yes

Heated: Yes
Finished: Yes
Enclosed: Yes
Contiguous: Yes
Permitted: Yes
Wet space: Yes
Addition: No
Conversion: No

8 Floor 2 - Bath



Dimensions: 5'8" x 6'3"
Area: 35 sq. ft
Counted as living area: Yes

Heated: Yes
Finished: Yes
Enclosed: Yes
Contiguous: Yes
Permitted: Yes
Wet space: Yes
Addition: No
Conversion: No

Home report

2737 Fillmore Avenue Northwest, Salem, Oregon 97304, United States

9 Floor 2 - W.I.C.



Dimensions: 10'0" x 8'4"
Area: 80 sq. ft
Counted as living area: Yes

Heated: Yes
Finished: Yes
Enclosed: Yes
Contiguous: Yes
Permitted: Yes
Wet space: No
Addition: No
Conversion: No

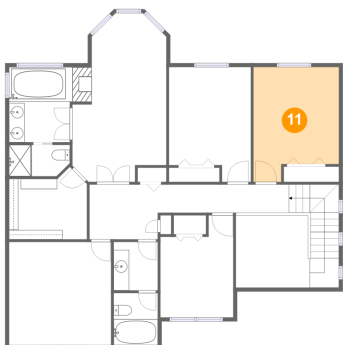
10 Floor 2 - Primary Bedroom



Dimensions: 12'1" x 19'3"
Area: 204 sq. ft
Counted as living area: Yes

Heated: Yes
Finished: Yes
Enclosed: Yes
Contiguous: Yes
Permitted: Yes
Wet space: No
Addition: No
Conversion: No

11 Floor 2 - Bedroom



Dimensions: 11'0" x 14'9"
Area: 145 sq. ft
Counted as living area: Yes

Heated: Yes
Finished: Yes
Enclosed: Yes
Contiguous: Yes
Permitted: Yes
Wet space: No
Addition: No
Conversion: No

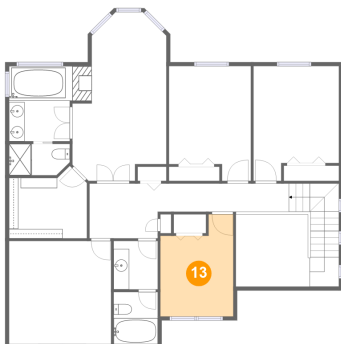
12 Floor 2 - Hall



Dimensions: 25'8" x 7'0"
Area: 189 sq. ft
Counted as living area: Yes

Heated: Yes
Finished: Yes
Enclosed: Yes
Contiguous: Yes
Permitted: Yes
Wet space: No
Addition: No
Conversion: No

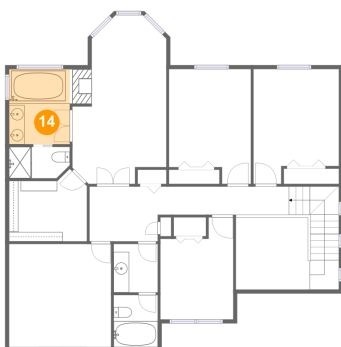
13 Floor 2 - Bedroom



Dimensions: 9'5" x 13'1"
Area: 106 sq. ft
Counted as living area: Yes

Heated: Yes
Finished: Yes
Enclosed: Yes
Contiguous: Yes
Permitted: Yes
Wet space: No
Addition: No
Conversion: No

14 Floor 2 - Primary Bath



Dimensions: 7'10" x 9'8"
Area: 75 sq. ft
Counted as living area: Yes

Heated: Yes
Finished: Yes
Enclosed: Yes
Contiguous: Yes
Permitted: Yes
Wet space: Yes
Addition: No
Conversion: No

15 Floor 2 - Open To Below



Dimensions: 9'3" x 9'3"
Area: 86 sq. ft
Counted as living area: No

Heated: No
Finished: No
Enclosed: No
Contiguous: Yes
Permitted: No
Wet space: No
Addition: No
Conversion: No

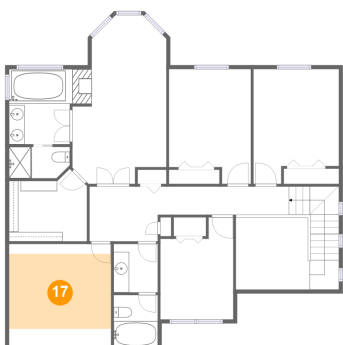
16 Floor 2 - Bedroom



Dimensions: 10'6" x 14'9"
Area: 141 sq. ft
Counted as living area: Yes

Heated: Yes
Finished: Yes
Enclosed: Yes
Contiguous: Yes
Permitted: Yes
Wet space: No
Addition: No
Conversion: No

17 Floor 2 - Bedroom



Dimensions: 13'1" x 13'3"
Area: 126 sq. ft
Counted as living area: Yes

Heated: Yes
Finished: Yes
Enclosed: Yes
Contiguous: Yes
Permitted: Yes
Wet space: No
Addition: No
Conversion: No

18 Floor 2 - Bath



Dimensions: 5'8" x 6'8"
Area: 38 sq. ft
Counted as living area: Yes

Heated: Yes
Finished: Yes
Enclosed: Yes
Contiguous: Yes
Permitted: Yes
Wet space: Yes
Addition: No
Conversion: No

19 Floor 2 - Bath



Dimensions: 7'10" x 4'0"
Area: 30 sq. ft
Counted as living area: Yes

Heated: Yes
Finished: Yes
Enclosed: Yes
Contiguous: Yes
Permitted: Yes
Wet space: Yes
Addition: No
Conversion: No