

35 Gordon Landon Drive

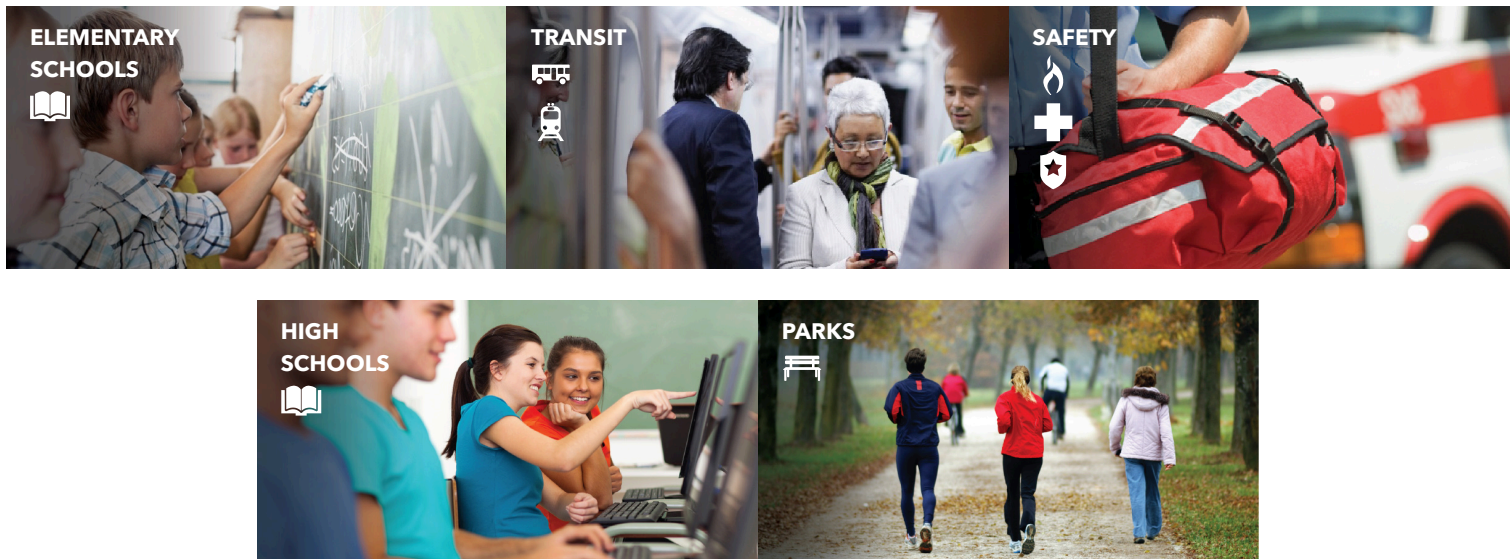
Markham, ON

HOODQ ADDRESS REPORT™

SJ Photography

416.564.1415

<http://www.sjvirtualtours.ca>



PUBLIC SCHOOLS (ASSIGNED)

Your neighbourhood is part of a community of Public Schools offering Elementary, Middle, and High School programming. See the closest Public Schools near you below:

Little Rouge PS



about a 6 minute walk - 0.44 KM

Pre-Kindergarten, Kindergarten, Elementary and Middle

571 Country Glen Rd, Markham, ON L6B, Canada

We the community of Little Rouge Public School will strive for academic excellence in all that we do. We will respect the rights and property of all members of our learning community. We are peaceful and compassionate with each other and we actively practice the Character Matters Traits. We feed our minds and bodies with healthy choices and promote environmental awareness. We are the Little Rouge Rockets developing our love of literacy and putting forth our best efforts in everything we do.

<http://www.yrdsb.ca...>

Address	571 Country Glen Rd, Markham, ON L6B, Canada
Language	English
Grade Level	Pre-Kindergarten, Kindergarten, Elementary and Middle
School Type	Public
Phone Number	905-202-5960
School Board	York Region DSB
School Number	016874
Grades Offered	PK to 8
School Board Number	B66095

Sam Chapman PS

1.88 KM away

Elementary and Middle

270 Alfred Paterson Dr, Markham, ON L6E 2G1, Canada

Sam Chapman Public School is a single track French Immersion school. It was officially opened in 2010. The school has developed its name from one of our former Directors of Education who was a champion of literacy, inclusion and education for all. Our school motto is a symbol of a Champion.... We strive to be champions of learning, equity, inclusivity and the environment. The teaching staff is committed to meeting the needs of our dynamic student population. Both the academic and social development of our students are very important to our staff. We believe that students should like to come to school and want to learn. Technology is used to deepen learning in authentic purposes. At Sam Chapman PS, we strongly believe in French Immersion and the importance of learning a second language in a rapidly changing world.

<http://www.yrdsb.ca...>

Address	270 Alfred Paterson Dr, Markham, ON L6E 2G1, Canada
Language	English
Grade Level	Elementary and Middle
School Type	Public
Phone Number	905-472-8374
School Board	York Region DSB
School Number	413133
Grades Offered	3 to 8
Additional Details	French Immersion
School Board Number	B66095

Académie de la Moraine

21.62 KM away

Pre-Kindergarten, Kindergarten and Elementary

115 George St, Aurora, ON L4G 2S3, Canada

<https://csviamonde.ca...>

Address	115 George St, Aurora, ON L4G 2S3, Canada
Language	French
Grade Level	Pre-Kindergarten, Kindergarten and Elementary
School Type	Public
Phone Number	905-773-7616
School Board	CS Viamonde
School Number	165468
Grades Offered	PK to 6
School Board Number	B66303
District Description	Toronto and Area Regional Office

Bill Hogarth SS



about a 16 minute walk - 1.2 KM

High

100 Donald Sim Ave, Markham, ON L6B, Canada

At Bill Hogarth Secondary School, we are committed to excellence in education. We will provide a caring, safe, supportive and inclusive environment filled with rich learning opportunities to support student achievement and well-being. We are dedicated to developing leadership in each student. Leadership is the ability to positively influence others. We strive to ignite a passion for learning such that our students see that they have a role in contributing to a respectful, compassionate, helpful & peaceful, local and global community.

<http://www.yrdsb.ca...>

Address	100 Donald Sim Ave, Markham, ON L6B, Canada
Language	English
Grade Level	High
School Type	Public

School Board	York Region DSB
School Number	890202
Grades Offered	9 to 12
Additional Details	French Immersion
School Board Number	B66095

ÉS Norval-Morrissette

17.04 KM away

High and Middle

51 Wright St, Richmond Hill, ON L4C 4A2, Canada

<https://csviamonde.ca...>

Address	51 Wright St, Richmond Hill, ON L4C 4A2, Canada
Language	French
Grade Level	High and Middle
School Type	Public
Phone Number	905-508-2516
School Board	CS Viamonde
School Number	896889
Grades Offered	7 to 12
Additional Details	Advanced Placement
School Board Number	B66303
District Description	Toronto and Area Regional Office

PUBLIC SCHOOLS (NEARBY)

Bill Crothers SS

8.45 KM away

High

44 Main St Unionville, Unionville, ON L3R 2E4, Canada

Bill Crothers Secondary School (BCSS) is an inclusive, character-focused learning environment that links excellence in education and athletics with a commitment to healthy, active living for all students. BCSS is a school for public secondary students across York Region. It will serve as a catalyst for the development of health and physical education programming as well as sport and academic innovation.

<http://www.yrdsb.ca...>

Address	44 Main St Unionville, Unionville, ON L3R 2E4, Canada
Language	English
Grade Level	High
School Type	Public
Phone Number	905-477-8503
School Board	York Region DSB
School Number	939585
Grades Offered	9 to 12
Additional Details	Special Focus
School Board Number	B66095

CATHOLIC SCHOOLS (ASSIGNED)

Your neighbourhood is part of a community of Catholic Schools offering Elementary, Middle, and High School programming. See the closest Catholic Schools near you below:

St Brother André Catholic HS

2.57 KM away

High

6160 16th Ave, Markham, ON L3P 3K8, Canada

The Mission of Saint Brother André Catholic High School, as a diverse Catholic family, is to educate each student in a Christ-centered environment to reach full potential in a rapidly changing world through Gospel-inspired learning experience, in partnership with home, church and community.

<http://sba.ycdsb.ca...>

Address	6160 16th Ave, Markham, ON L3P 3K8, Canada
Language	English
Grade Level	High
Orientation	Catholic
School Type	Public
Phone Number	905-294-7671
School Board	York CDSB
School Number	691356
Grades Offered	9 to 12
Additional Details	Religious, Advanced Placement and French Immersion
School Board Number	B67075

St Kateri Tekakwitha Catholic ES

1.97 KM away

Pre-Kindergarten, Kindergarten, Elementary and Middle

230 Fincham Ave, Markham, ON L3P 4B5, Canada

St. Kateri Tekakwitha Catholic School, a model of Christian leadership with the community, is committed to educating our students, developing spiritual and social awareness, achieving academic excellence, valuing the Canadian mosaic and discovering the joy of being life long learners.

<http://kta.ycdsb.ca...>

Address	230 Fincham Ave, Markham, ON L3P 4B5, Canada
Language	English
Grade Level	Pre-Kindergarten, Kindergarten, Elementary and Middle
Orientation	Catholic
School Type	Public
Phone Number	905-471-4477
School Board	York CDSB
School Number	725161
Grades Offered	PK to 8
Additional Details	Religious
School Board Number	B67075

St Edward Catholic ES

4.55 KM away

Elementary and Middle

33 Cairns Dr, Markham, ON L3P 7M8, Canada

Be the best you can be! St Edward is now a single-track French Immersion school.

<http://sed.ycdsb.ca...>

Address	33 Cairns Dr, Markham, ON L3P 7M8, Canada
Language	English

Grade Level	Elementary and Middle
Orientation	Catholic
School Type	Public
Phone Number	905-471-1445
School Board	York CDSB
School Number	788082
Grades Offered	1 to 8
Additional Details	Religious and French Immersion
School Board Number	B67075

École catholique Pape-François

7.35 KM away

Pre-Kindergarten, Kindergarten, Elementary, Middle and High

276 Sunset Blvd, Whitchurch-Stouffville, ON L4A 3R1, Canada

La présence de notre école dans la ville de Stouffville marque le début d'un projet éducatif empreint d'excellence d'autant plus que l'école catholique Pape-François représente un modèle unique au sein de notre conseil scolaire. Nous sommes donc très fiers de pouvoir offrir une éducation catholique de langue française aux enfants de notre communauté.

<https://pf.cscmonavenir.ca...>

Address	276 Sunset Blvd, Whitchurch-Stouffville, ON L4A 3R1, Canada
Language	French
Grade Level	Pre-Kindergarten, Kindergarten, Elementary, Middle and High
Orientation	Catholic
School Type	Public
School Board	CS catholique MonAvenir
School Number	773943
Grades Offered	PK to 12
Additional Details	Religious
School Board Number	B67318

PRIVATE SCHOOLS

See a list of the closest private schools near you:

MindTech Montessori School North Campus

5.25 KM away

Cambridge Academy

4.35 KM away

PARKS & REC.

Whether you want to sit at a park bench with a good book or use one of the special facilities offered, you'll be happy to know that your neighbourhood is close to many wonderful recreational opportunities. See Parks and Recreation facilities near you below:



Upper Cornell Park about a 5 minute walk - 0.35 KM

128 Northvale Rd, Markham, ON, Canada

1 Playground, 1 Sports Field, 1 Basketball Court, 1 Splash Pad, and 1 Multi-Use Pad

<http://www.markham.ca...>



Country Glen Pond about a 7 minute walk - 0.56 KM

Bur Oak Ave, Markham, ON, Canada

1 Trail

<http://www.markham.ca...>



Blake Lazenby Park about a 10 minute walk - 0.73 KM

118 Morning Dove Dr, Markham, ON, Canada

1 Picnic Facilities

<http://www.markham.ca...>



Country Glen Parkette about a 10 minute walk - 0.77 KM

Country Glen Rd, Markham, ON, Canada

1 Playground

<http://www.markham.ca...>

TRANSIT

The public transit system can be an easy, cost-effective and efficient way of getting around the city, accessible from your neighbourhood. See the closest Public Transit stops near you below:



The nearest rail transit stop is Mount Joy GO

2.66 KM away

<https://www.gotransit.com...>



The nearest street-level transit stop is Bur Oak Av / Northvale Rd



about a 3 minute walk - 0.25 KM

<http://www.yrt.ca...>

SAFETY

Every second matters in an emergency, and your neighbourhood is part of a dedicated safety system of emergency agencies including Fire Stations, Police Stations, and Hospitals. See the closest facilities near you below:



Markham Stouffville Hospital

Markham Stouffville Hospital is a progressive, two-site, community hospital with leading diagnostic services and clinical programs in acute care medicine and surgery, addictions and mental health, and childbirth and children's health. Partnering with other specialist providers, the hospital's 450 physicians, 2,100 staff and 16 midwives make it the centre of community care for the residents of the City of Markham and the Towns of Stouffville and Uxbridge.

2 KM away

Type	Community, Emergency Care and General
Address	381 Church St, Markham, ON, L3P 7P3, Canada
Phone Number	905-472-7373

<http://www.msh.on.ca...>



The nearest fire station is Markham Fire Station 99

2.2 KM away

Address 3255 Bur Oak Ave, Markham, ON L6B 0T2, Canada

<https://www.markham.ca...>

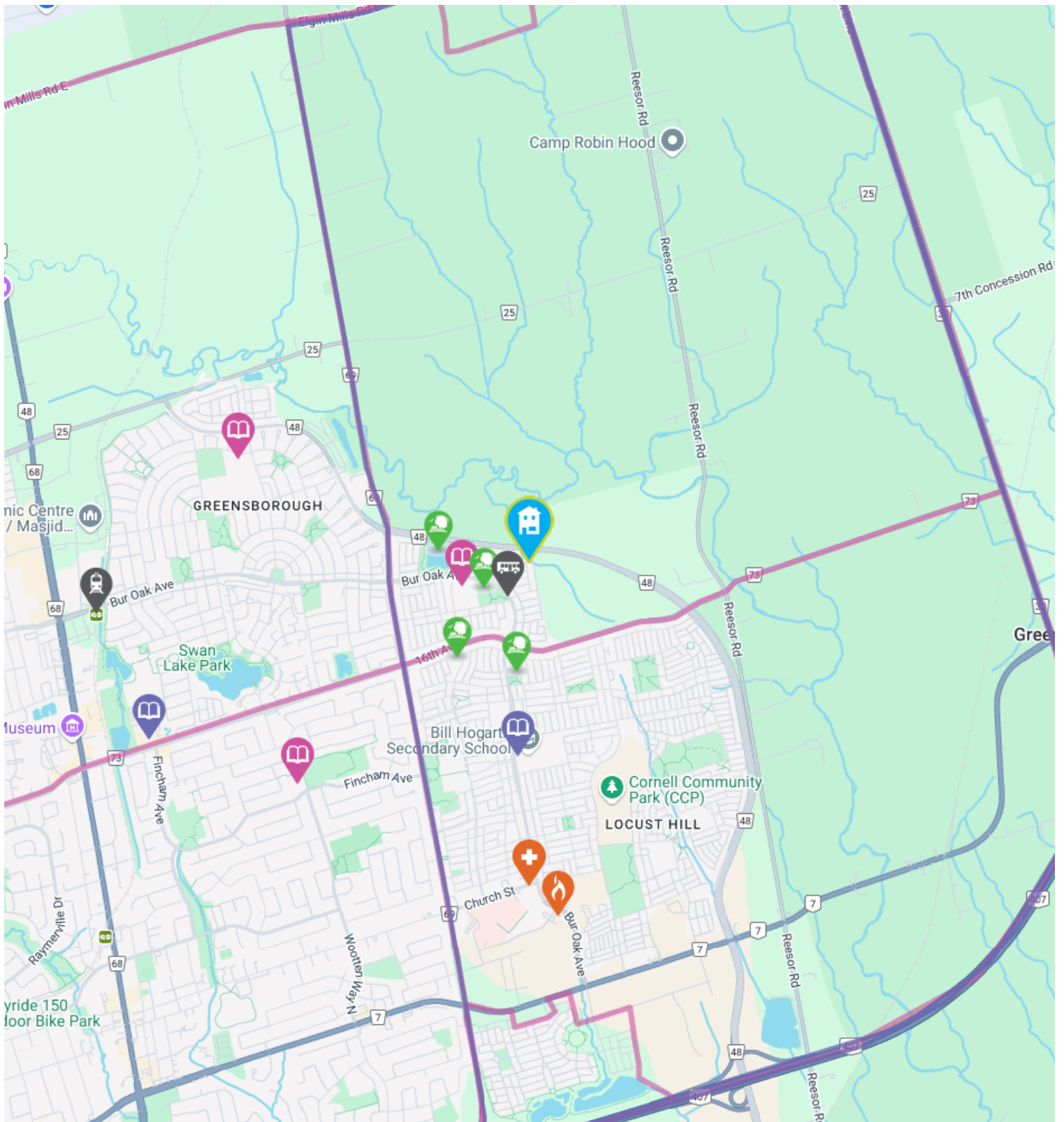


The nearest police facility is York Regional Police #5 District

5.46 KM away

Address 8700 McCowan Road, Markham, ON L3P

<http://www.yrp.ca...>



Elementary
Schools

Middle Schools

High Schools

Transit

Safety

Elementary
Attendance Zone

Middle
Attendance Zone

High Attendance
Zone

Parks

HoodQ

Disclaimer: These materials have been prepared for sj@sjphotography.co and are not intended to solicit buyers or sellers currently under contract with a brokerage. By accessing this information you have agreed to our terms of service, which are hereby incorporated by reference. This information may contain errors and omissions. You are not permitted to rely on the contents of this information and must take steps to independently verify its contents with the appropriate authorities (school boards, governments etc.). As a recipient of this information, you agree not to hold us, our licensors or the owners of the information liable for any damages, howsoever caused.