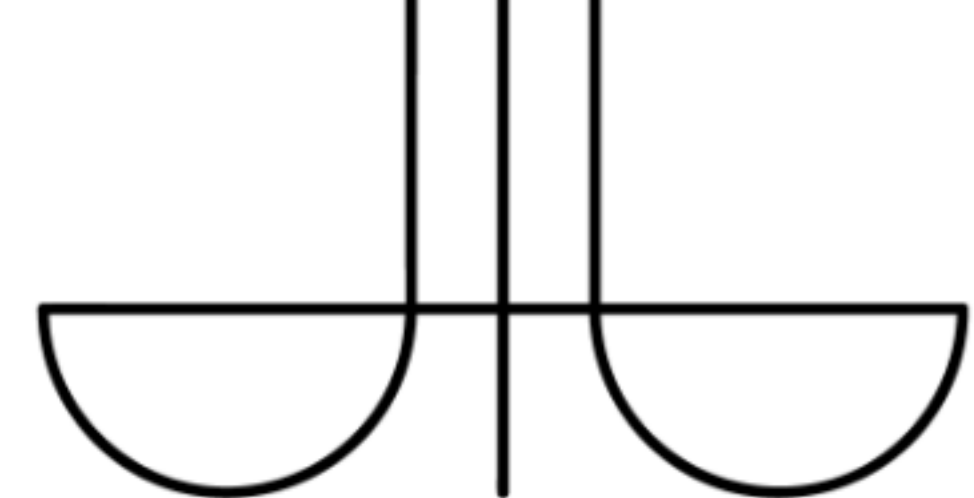


Basement
58'5" x 37'5"

Beyond Limits Productions

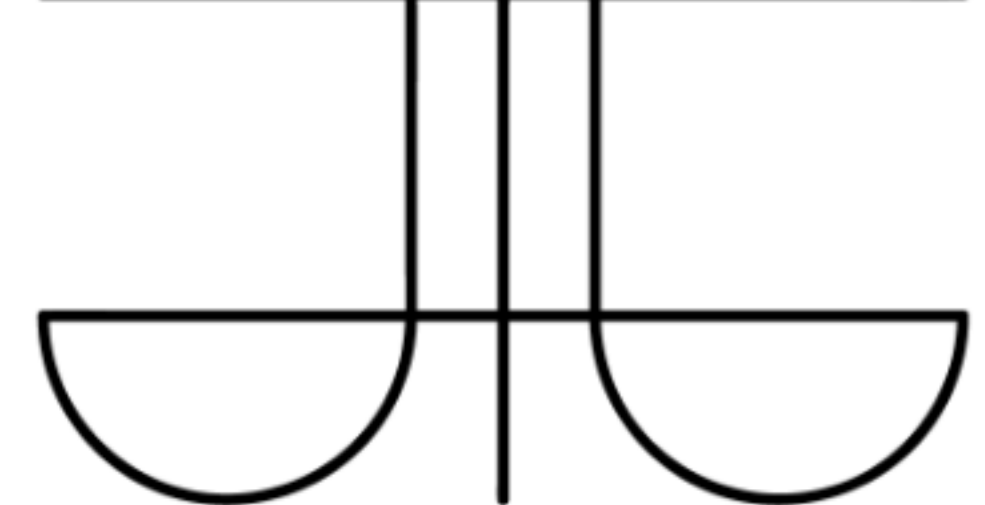


TOTAL: 2836 sq. ft
BELOW GROUND: 0 sq. ft, FLOOR 2: 2000 sq. ft, FLOOR 3: 836 sq. ft
EXCLUDED AREAS: BASEMENT: 1915 sq. ft, GARAGE: 394 sq. ft, SCREENED PORCH: 246 sq. ft,
OPEN TO BELOW: 273 sq. ft

Measurements Are Taken Using Lidar Technology, Deemed Highly Reliable But Not Guaranteed

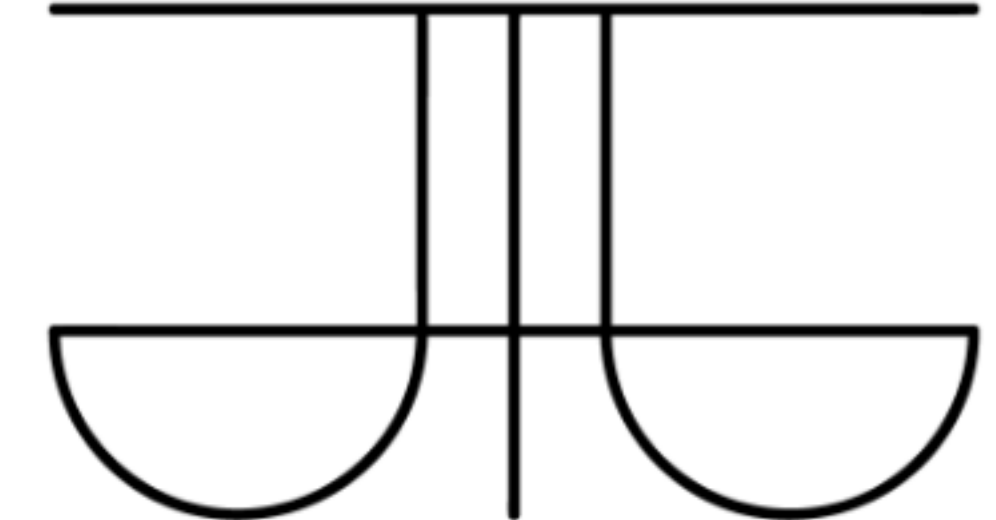


Beyond Limits Productions



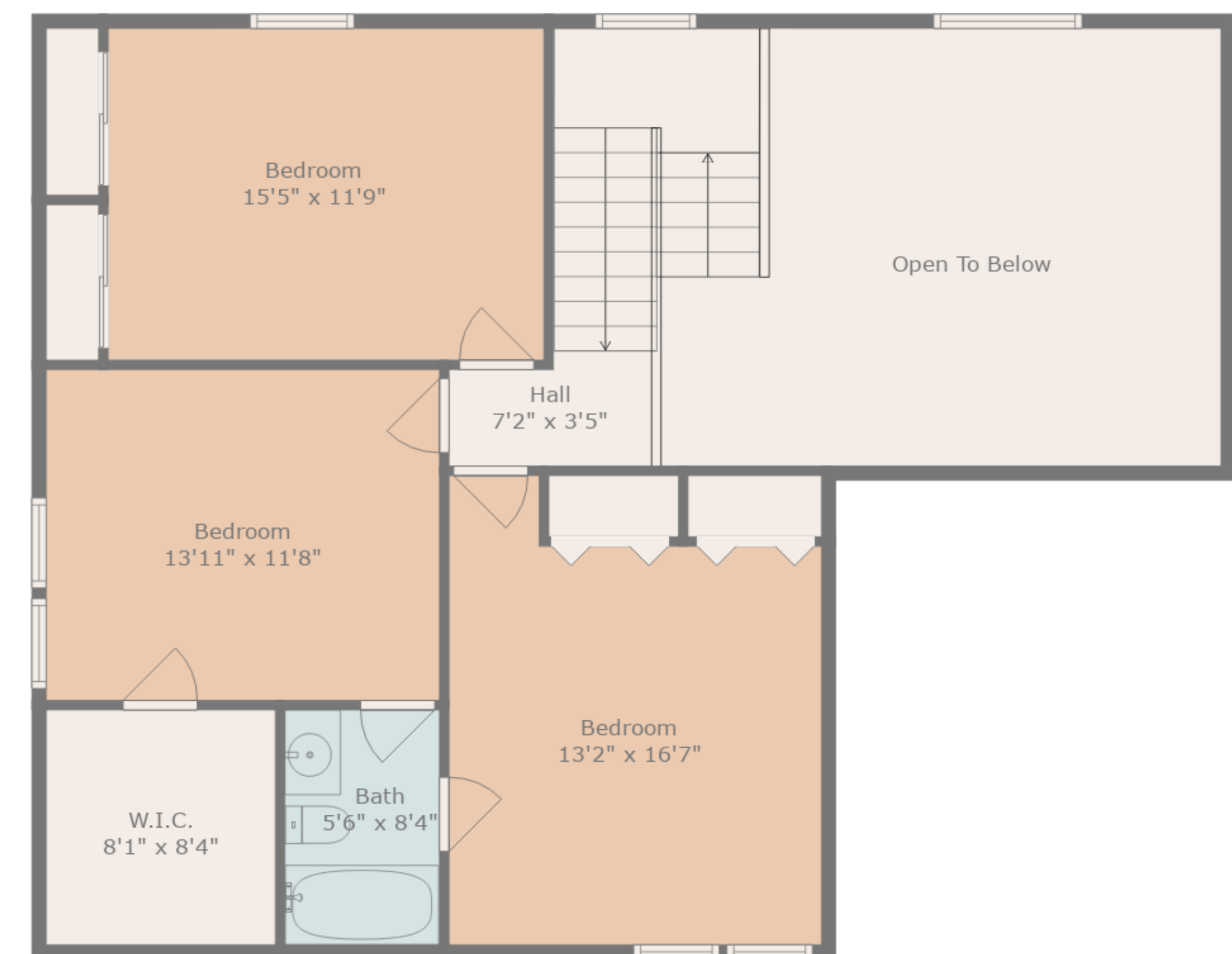
TOTAL: 2836 sq. ft
 BELOW GROUND: 0 sq. ft, FLOOR 2: 2000 sq. ft, FLOOR 3: 836 sq. ft
 EXCLUDED AREAS: BASEMENT: 1915 sq. ft, GARAGE: 394 sq. ft, SCREENED PORCH: 246 sq. ft,
 OPEN TO BELOW: 273 sq. ft

Measurements Are Taken Using Lidar Technology, Deemed Highly Reliable But Not Guaranteed

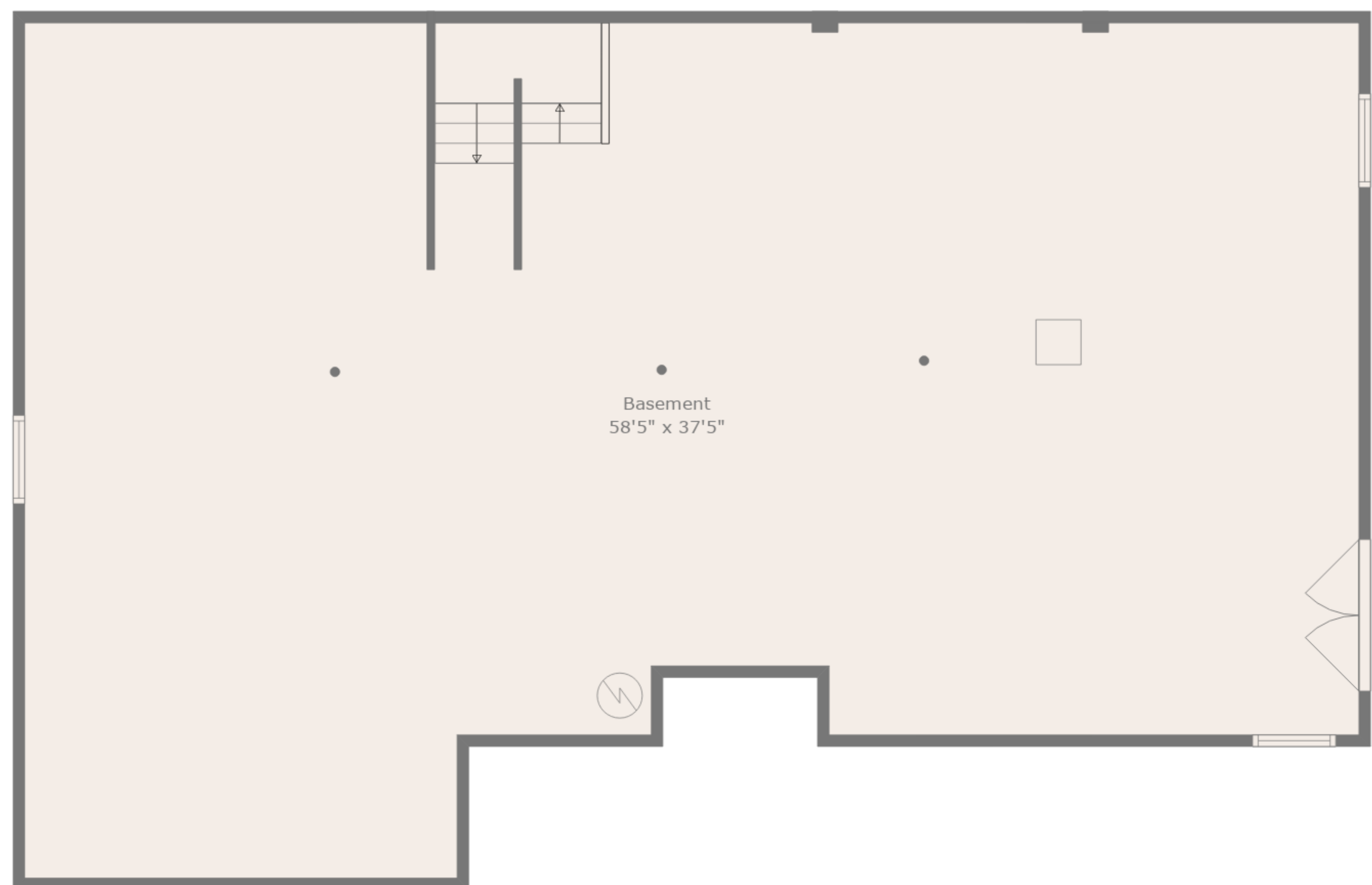




Floor 2



Floor 3



Floor 1

TOTAL: 2836 sq. ft
 BELOW GROUND: 0 sq. ft, FLOOR 2: 2000 sq. ft, FLOOR 3: 836 sq. ft
 EXCLUDED AREAS: BASEMENT: 1915 sq. ft, GARAGE: 394 sq. ft, SCREENED PORCH: 246 sq. ft,
 OPEN TO BELOW: 273 sq. ft

Measurements Are Taken Using Lidar Technology, Deemed Highly Reliable But Not Guaranteed

Beyond Limits Productions

