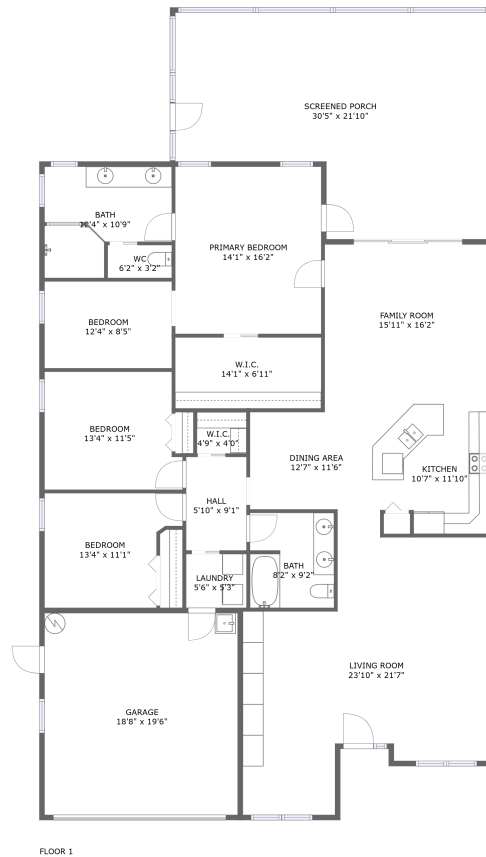


10513 Weybridge Drive, The Fords, Westchase, Tampa, Hillsborough County, Florida, United



Property Summary

 **1** garages

 **4** bedrooms

 **2** bathrooms

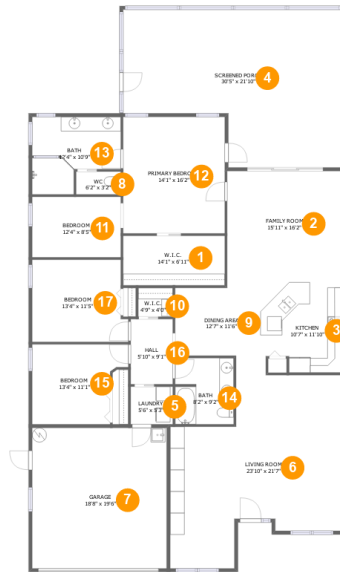
 **0** half baths

 **1** floors

 **2,210**
Gross Living
Area sqft

 **3,183**
total sqft

10513 Weybridge Drive, The Fords, Westchase, Tampa, Hillsborough County, Florida, United



Room Dimensions

Floor 1

Total sqft: 3183

Living area: 2210

#	Room name	Dimensions	Area (sqft)	Counted as Living Area
1	W.i.c.	14'1" x 6'11"	97 sq. ft	Yes
2	Family Room	15'11" x 16'2"	258 sq. ft	Yes
3	Kitchen	10'7" x 11'10"	118 sq. ft	Yes
4	Screened Porch	30'5" x 21'10"	556 sq. ft	No
5	Laundry	5'6" x 5'3"	30 sq. ft	Yes
6	Living Room	23'10" x 21'7"	490 sq. ft	Yes
7	Garage	18'8" x 19'6"	364 sq. ft	No
8	Wc	6'2" x 3'2"	20 sq. ft	Yes
9	Dining Area	12'7" x 11'6"	127 sq. ft	Yes
10	W.i.c.	4'9" x 4'0"	19 sq. ft	Yes
11	Bedroom	12'4" x 8'5"	103 sq. ft	Yes

Scan captured on Thu, 24 Oct 2024 22:57:29 GMT

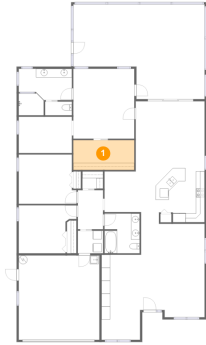
Information is calculated by CubiCasa technology; deemed highly reliable but not guaranteed.

**10513 Weybridge Drive, The Fords, Westchase,
Tampa, Hillsborough County, Florida, United**

#	Room name	Dimensions	Area (sqft)	Counted as Living Area
12	Primary Bedroom	14'1" x 16'2"	228 sq. ft	Yes
13	Bath	12'4" x 10'9"	108 sq. ft	Yes
14	Bath	8'2" x 9'2"	74 sq. ft	Yes
15	Bedroom	13'4" x 11'1"	128 sq. ft	Yes
16	Hall	5'10" x 9'1"	53 sq. ft	Yes
17	Bedroom	13'4" x 11'5"	144 sq. ft	Yes

10513 Weybridge Drive, The Fords, Westchase, Tampa, Hillsborough County, Florida, United

1 Floor 1 - W.i.c.



Dimensions: 14'1" x 6'11"
Area: 97 sq. ft
Counted as Living Area:
Yes

Heated: Yes
Finished: Yes
Enclosed: Yes
Contiguous:
Yes
Permitted: Yes
Wet Space: No
Addition: No
Conversion: No

2 Floor 1 - Family Room



Dimensions: 15'11" x 16'2"
Area: 258 sq. ft
Counted as Living Area:
Yes

Heated: Yes
Finished: Yes
Enclosed: Yes
Contiguous:
Yes
Permitted: Yes
Wet Space: No
Addition: No
Conversion: No

10513 Weybridge Drive, The Fords, Westchase, Tampa, Hillsborough County, Florida, United

3 Floor 1 - Kitchen



Dimensions: 10'7" x 11'10"
Area: 118 sq. ft
Counted as Living Area:
Yes

Heated: Yes
Finished: Yes
Enclosed: Yes
Contiguous:
Yes
Permitted: Yes
Wet Space: No
Addition: No
Conversion: No

4 Floor 1 - Screened Porch



Dimensions: 30'5" x 21'10"
Area: 556 sq. ft
Counted as Living Area: No

Heated: No
Finished: Yes
Enclosed: No
Contiguous: Yes
Permitted: Yes
Wet Space: No
Addition: No
Conversion: No

5 Floor 1 - Laundry



Dimensions: 5'6" x 5'3"
Area: 30 sq. ft
Counted as Living Area:
Yes

Heated: Yes
Finished: Yes
Enclosed: Yes
Contiguous:
Yes
Permitted: Yes
Wet Space: No
Addition: No
Conversion: No

10513 Weybridge Drive, The Fords, Westchase, Tampa, Hillsborough County, Florida, United

6 Floor 1 - Living Room



Dimensions: 23'10" x 21'7"
Area: 490 sq. ft
Counted as Living Area:
Yes

Heated: Yes
Finished: Yes
Enclosed: Yes
Contiguous:
Yes
Permitted: Yes
Wet Space: No
Addition: No
Conversion: No

7 Floor 1 - Garage



Dimensions: 18'8" x 19'6"
Area: 364 sq. ft
Counted as Living Area: No

Heated: No
Finished: No
Enclosed: Yes
Contiguous: Yes
Permitted: Yes
Wet Space: No
Addition: No
Conversion: No

8 Floor 1 - Wc



Dimensions: 6'2" x 3'2"
Area: 20 sq. ft
Counted as Living Area:
Yes

Heated: Yes
Finished: Yes
Enclosed: Yes
Contiguous:
Yes
Permitted: Yes
Wet Space: Yes
Addition: No
Conversion: No

10513 Weybridge Drive, The Fords, Westchase, Tampa, Hillsborough County, Florida, United

9 Floor 1 - Dining Area



Dimensions: 12'7" x 11'6"
Area: 127 sq. ft
Counted as Living Area:
Yes

Heated: Yes
Finished: Yes
Enclosed: Yes
Contiguous:
Yes
Permitted: Yes
Wet Space: No
Addition: No
Conversion: No

10 Floor 1 - W.i.c.



Dimensions: 4'9" x 4'0"
Area: 19 sq. ft
Counted as Living Area:
Yes

Heated: Yes
Finished: Yes
Enclosed: Yes
Contiguous:
Yes
Permitted: Yes
Wet Space: No
Addition: No
Conversion: No

11 Floor 1 - Bedroom

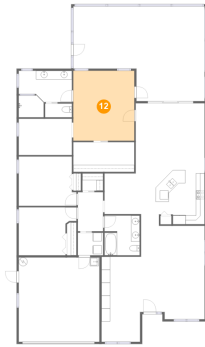


Dimensions: 12'4" x 8'5"
Area: 103 sq. ft
Counted as Living Area:
Yes

Heated: Yes
Finished: Yes
Enclosed: Yes
Contiguous:
Yes
Permitted: Yes
Wet Space: No
Addition: No
Conversion: No

10513 Weybridge Drive, The Fords, Westchase, Tampa, Hillsborough County, Florida, United

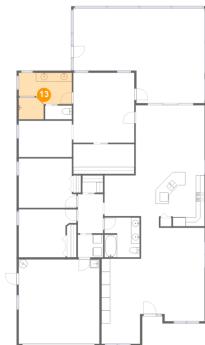
12 Floor 1 - Primary Bedroom



Dimensions: 14'1" x 16'2"
Area: 228 sq. ft
Counted as Living Area:
Yes

Heated: Yes
Finished: Yes
Enclosed: Yes
Contiguous:
Yes
Permitted: Yes
Wet Space: No
Addition: No
Conversion: No

13 Floor 1 - Bath



Dimensions: 12'4" x 10'9"
Area: 108 sq. ft
Counted as Living Area:
Yes

Heated: Yes
Finished: Yes
Enclosed: Yes
Contiguous:
Yes
Permitted: Yes
Wet Space: Yes
Addition: No
Conversion: No

14 Floor 1 - Bath

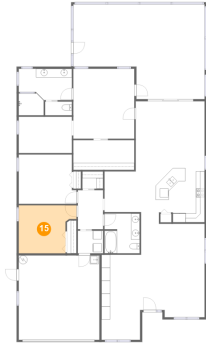


Dimensions: 8'2" x 9'2"
Area: 74 sq. ft
Counted as Living Area:
Yes

Heated: Yes
Finished: Yes
Enclosed: Yes
Contiguous:
Yes
Permitted: Yes
Wet Space: Yes
Addition: No
Conversion: No

10513 Weybridge Drive, The Fords, Westchase, Tampa, Hillsborough County, Florida, United

15 Floor 1 - Bedroom



Dimensions: 13'4" x 11'1"
Area: 128 sq. ft
Counted as Living Area:
Yes

Heated: Yes
Finished: Yes
Enclosed: Yes
Contiguous:
Yes
Permitted: Yes
Wet Space: No
Addition: No
Conversion: No

16 Floor 1 - Hall



Dimensions: 5'10" x 9'1"
Area: 53 sq. ft
Counted as Living Area:
Yes

Heated: Yes
Finished: Yes
Enclosed: Yes
Contiguous:
Yes
Permitted: Yes
Wet Space: No
Addition: No
Conversion: No

17 Floor 1 - Bedroom



Dimensions: 13'4" x 11'5"
Area: 144 sq. ft
Counted as Living Area:
Yes

Heated: Yes
Finished: Yes
Enclosed: Yes
Contiguous:
Yes
Permitted: Yes
Wet Space: No
Addition: No
Conversion: No