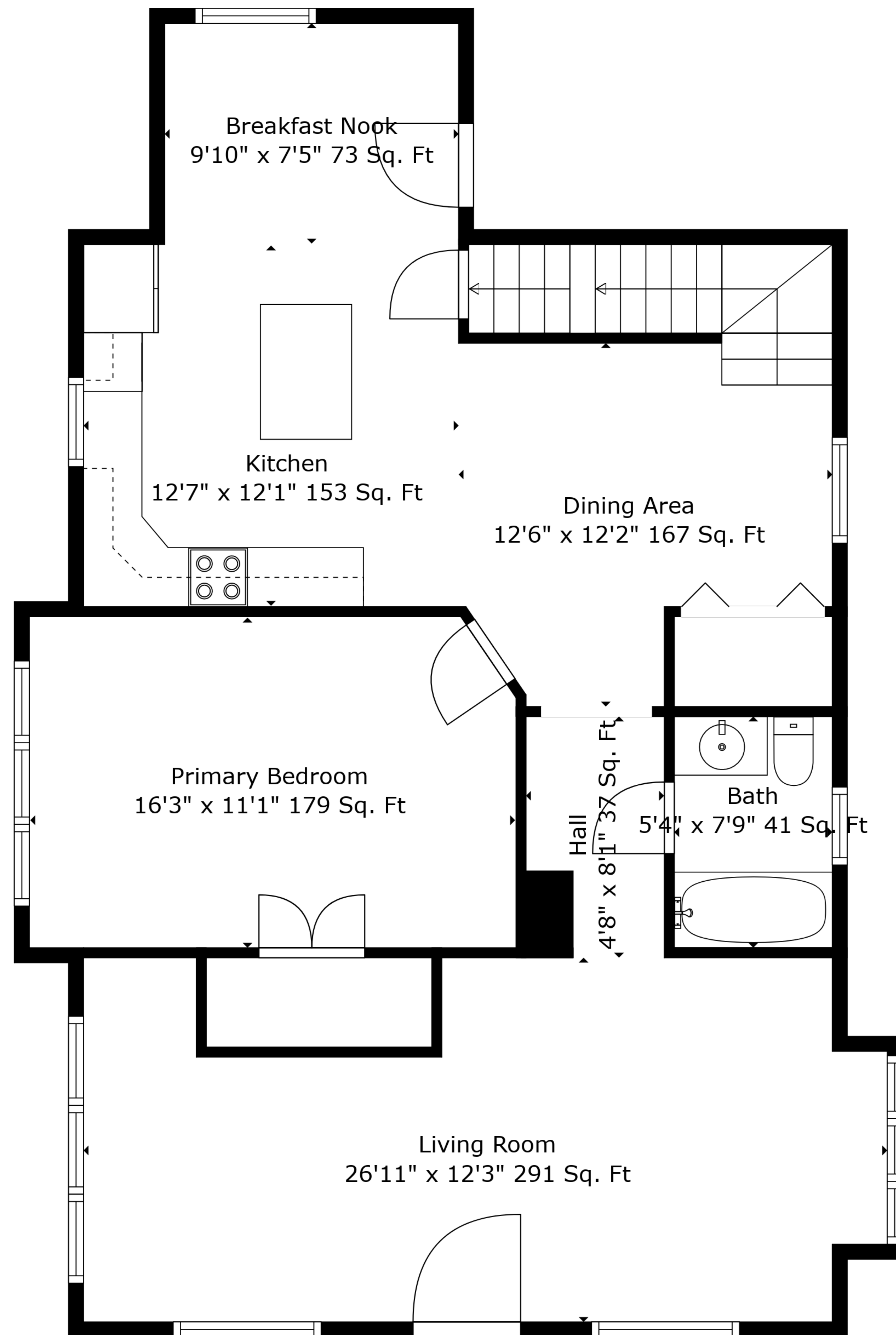


Basement  
26'11" x 36'1" 878 Sq. Ft

**TOTAL: 1588 sq. ft**

BELOW GROUND: 0 sq. ft, FLOOR 2: 1012 sq. ft, FLOOR 3: 576 sq. ft  
EXCLUDED AREAS: BASEMENT: 890 sq. ft, UNDEFINED: 37 sq. ft, LOW CEILING: 145 sq. ft

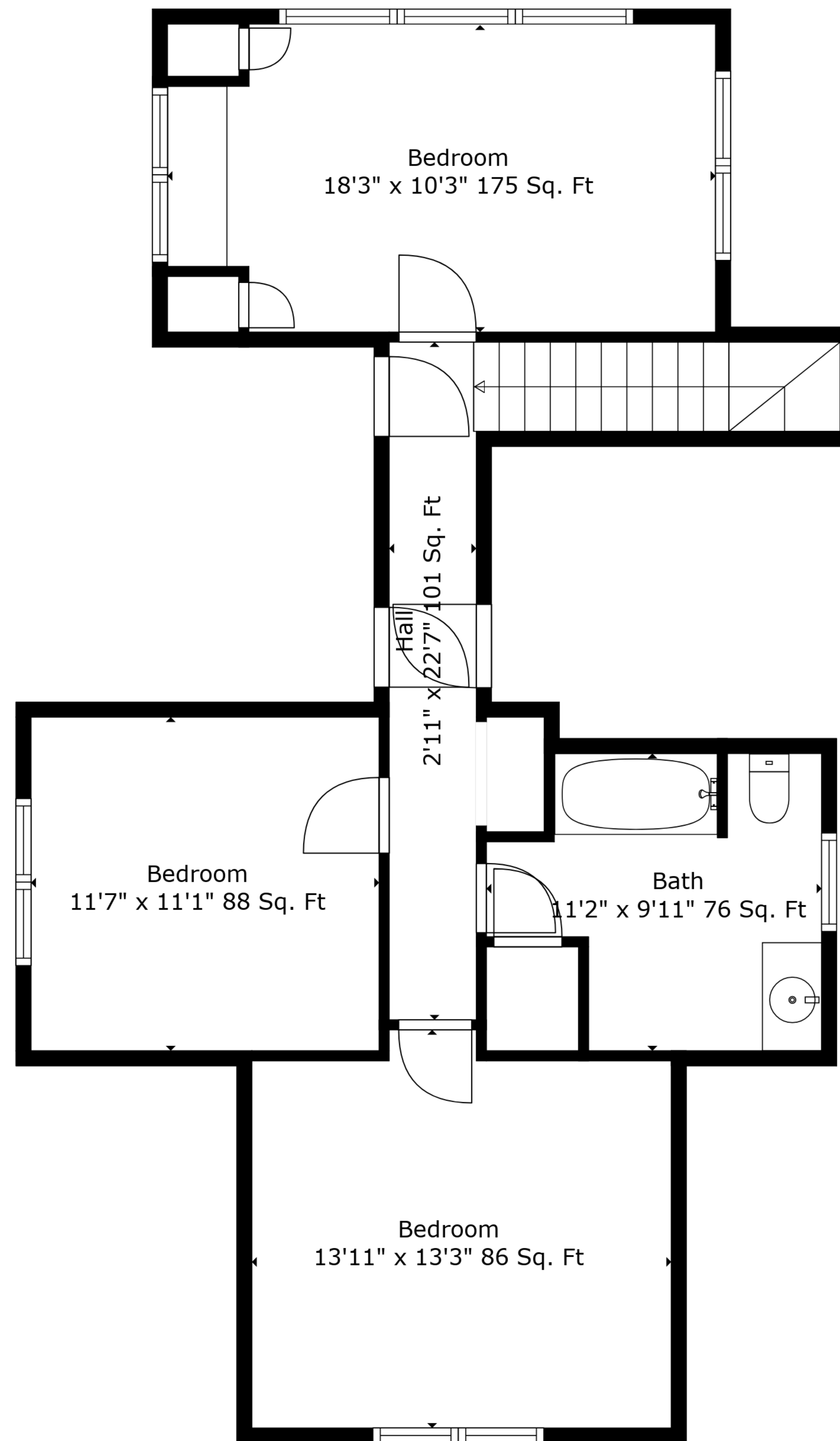
Measurements Are Deemed Highly Reliable But Not Guaranteed.



**TOTAL: 1588 sq. ft**

BELOW GROUND: 0 sq. ft, FLOOR 2: 1012 sq. ft, FLOOR 3: 576 sq. ft  
 EXCLUDED AREAS: BASEMENT: 890 sq. ft, UNDEFINED: 37 sq. ft, LOW CEILING: 145 sq. ft

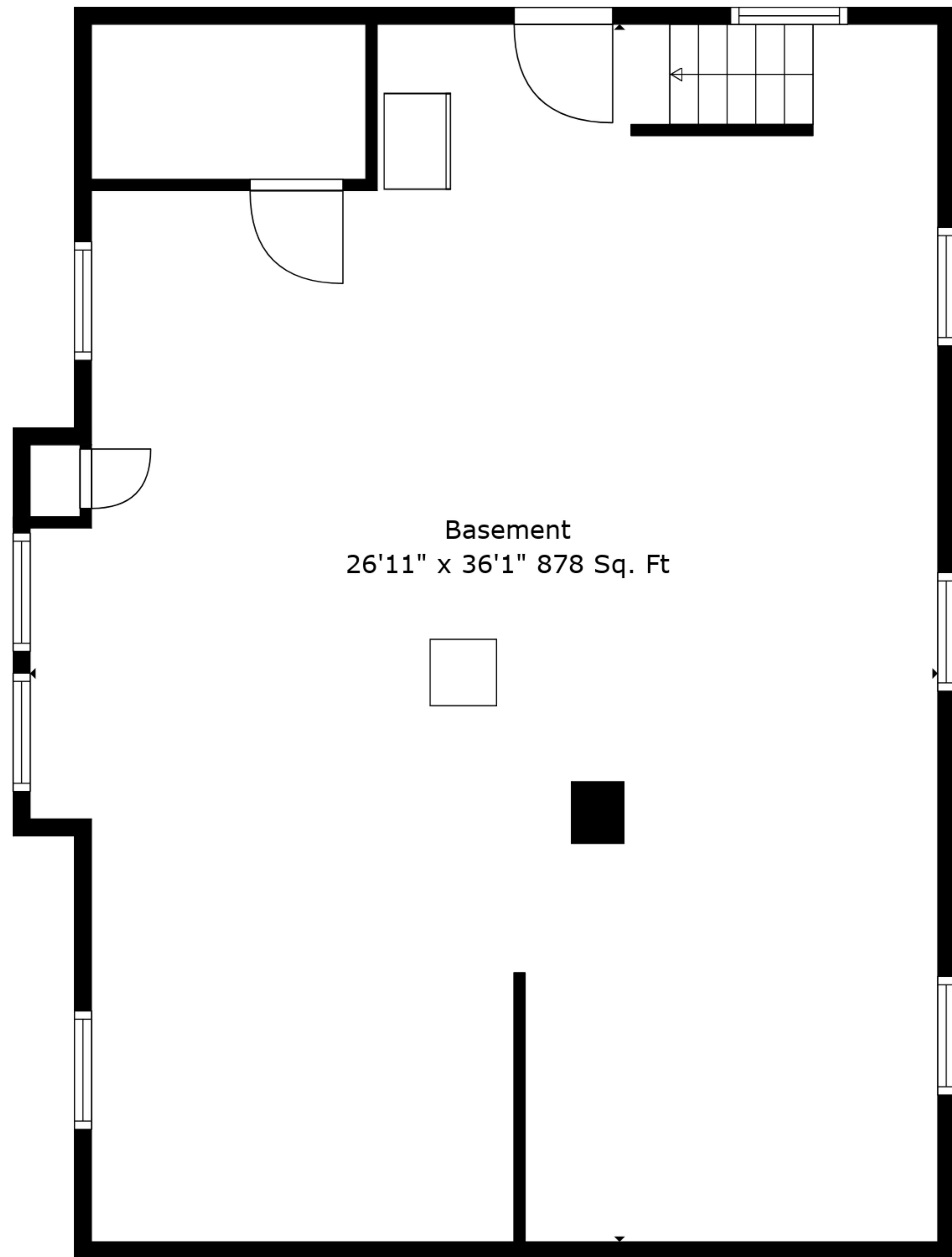
Measurements Are Deemed Highly Reliable But Not Guaranteed.



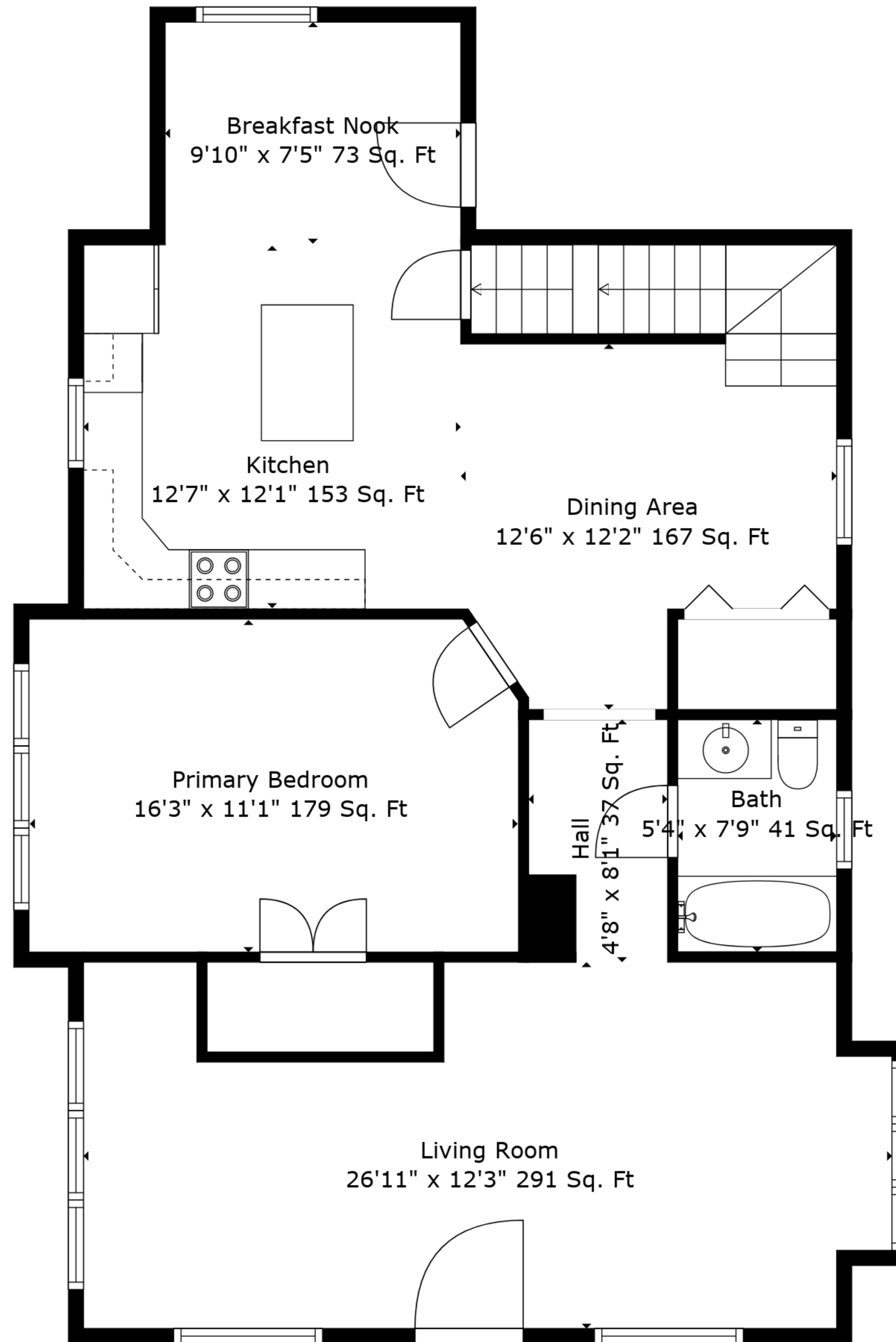
**TOTAL: 1588 sq. ft**

BELOW GROUND: 0 sq. ft, FLOOR 2: 1012 sq. ft, FLOOR 3: 576 sq. ft  
EXCLUDED AREAS: BASEMENT: 890 sq. ft, UNDEFINED: 37 sq. ft, LOW CEILING: 145 sq. ft

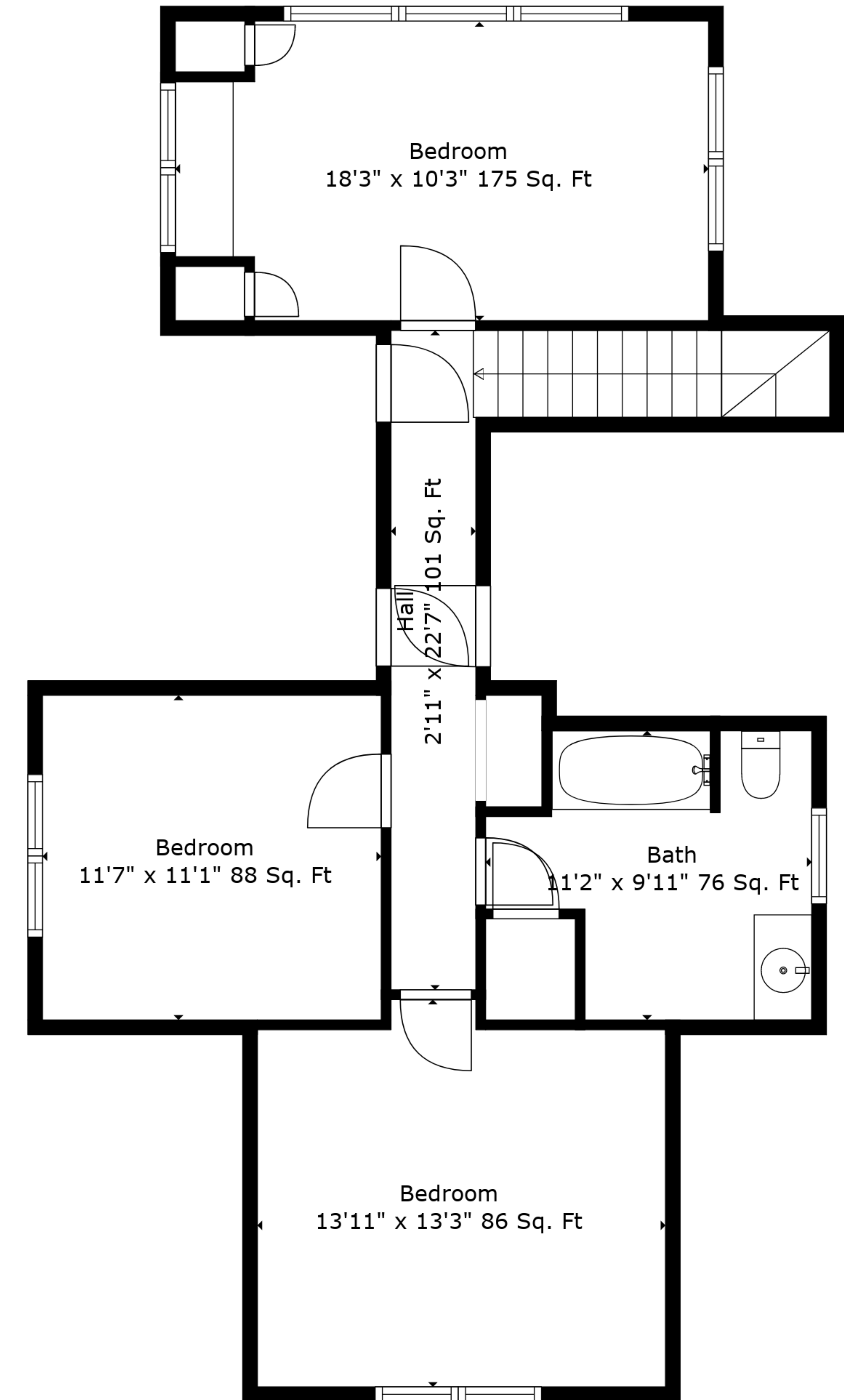
Measurements Are Deemed Highly Reliable But Not Guaranteed.



Floor 1



Floor 2



Floor 3

**TOTAL: 1588 sq. ft**  
 BELOW GROUND: 0 sq. ft, FLOOR 2: 1012 sq. ft, FLOOR 3: 576 sq. ft  
 EXCLUDED AREAS: BASEMENT: 890 sq. ft, UNDEFINED: 37 sq. ft, LOW CEILING: 145 sq. ft

Measurements Are Deemed Highly Reliable But Not Guaranteed.