

496 Northwest Cascade Mountain Drive, Dallas, Polk County,
Oregon, United States, 97338




Total Area: 1743 sq. ft


Floor 1: 1743 sq. ft

Excluded: Garage 673 sq. ft, Walls: 138 sq. ft

Property summary

 1 Floors

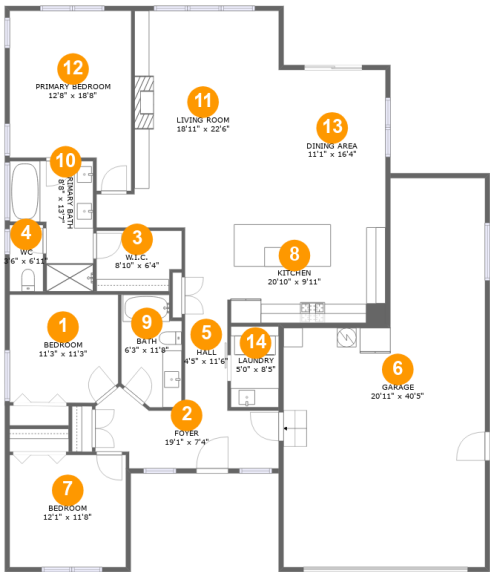
 3 Bedrooms

 2 Bathrooms

 1 Garages

Home report

496 Northwest Cascade Mountain Drive, Dallas, Polk County, Oregon, United States, 97338



Room dimensions

Floor 1 Total:1743sqft Excluded: 673sqft

#		Max Dimensions	sqft	Included
1	Bedroom	11'3" x 11'3"	124 sq. ft	Yes
2	Foyer	19'1" x 7'4"	116 sq. ft	Yes
3	W.I.C.	8'10" x 6'4"	53 sq. ft	Yes
4	WC	3'6" x 6'11"	24 sq. ft	Yes
5	Hall	4'5" x 11'6"	51 sq. ft	Yes
6	Garage	20'11" x 40'5"	673 sq. ft	No
7	Bedroom	12'1" x 11'8"	141 sq. ft	Yes
8	Kitchen	20'10" x 9'11"	195 sq. ft	Yes
9	Bath	6'3" x 11'8"	66 sq. ft	Yes
10	Primary Bath	8'8" x 13'7"	90 sq. ft	Yes
11	Living Room	18'11" x 22'6"	351 sq. ft	Yes

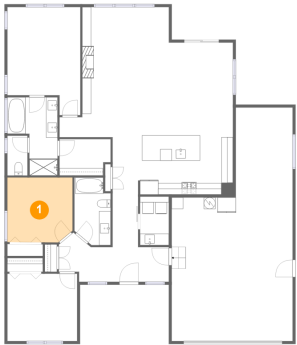
Home report

496 Northwest Cascade Mountain Drive, Dallas, Polk County,
Oregon, United States, 97338

#		Max Dimensions	sqft	Included
12	Primary Bedroom	12'8" x 18'8"	205 sq. ft	Yes
13	Dining Area	11'1" x 16'4"	181 sq. ft	Yes
14	Laundry	5'0" x 8'5"	42 sq. ft	Yes

496 Northwest Cascade Mountain Drive, Dallas, Polk County,
Oregon, United States, 97338

1 Floor 1 - Bedroom



Max Dimensions: 11'3" x 11'3"
Calculated Area: 124 sq. ft
Included: Yes

Heated: Yes
Finished: Yes
Enclosed: Yes
Contiguous: Yes
Permitted: Yes
Wet space: No
Addition: No
Conversion: No

2 Floor 1 - Foyer



Max Dimensions: 19'1" x 7'4"
Calculated Area: 116 sq. ft
Included: Yes

Heated: Yes
Finished: Yes
Enclosed: Yes
Contiguous: Yes
Permitted: Yes
Wet space: No
Addition: No
Conversion: No

496 Northwest Cascade Mountain Drive, Dallas, Polk County,
Oregon, United States, 97338

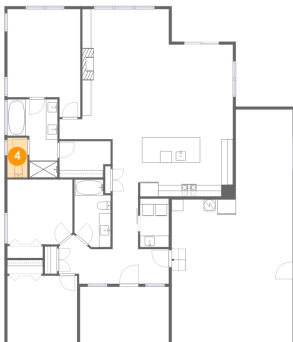
3 Floor 1 - W.I.C.



Max Dimensions: 8'10" x 6'4"
Calculated Area: 53 sq. ft
Included: Yes

Heated: Yes
Finished: Yes
Enclosed: Yes
Contiguous: Yes
Permitted: Yes
Wet space: No
Addition: No
Conversion: No

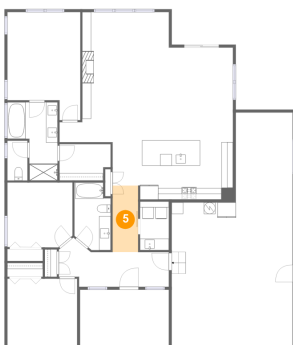
4 Floor 1 - WC



Max Dimensions: 3'6" x 6'11"
Calculated Area: 24 sq. ft
Included: Yes

Heated: Yes
Finished: Yes
Enclosed: Yes
Contiguous: Yes
Permitted: Yes
Wet space: Yes
Addition: No
Conversion: No

5 Floor 1 - Hall



Max Dimensions: 4'5" x 11'6"
Calculated Area: 51 sq. ft
Included: Yes

Heated: Yes
Finished: Yes
Enclosed: Yes
Contiguous: Yes
Permitted: Yes
Wet space: No
Addition: No
Conversion: No

496 Northwest Cascade Mountain Drive, Dallas, Polk County,
Oregon, United States, 97338

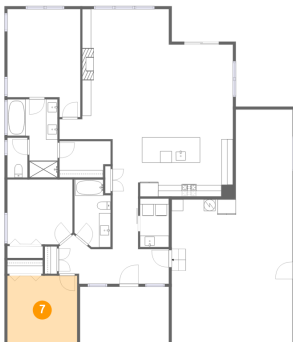
6 Floor 1 - Garage



Max Dimensions: 20'11" x 40'5"
Calculated Area: 673 sq. ft
Included: No

Heated: No
Finished: No
Enclosed: Yes
Contiguous: Yes
Permitted: Yes
Wet space: No
Addition: No
Conversion: No

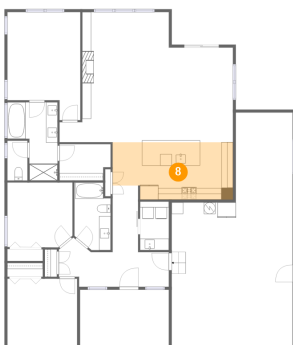
7 Floor 1 - Bedroom



Max Dimensions: 12'1" x 11'8"
Calculated Area: 141 sq. ft
Included: Yes

Heated: Yes
Finished: Yes
Enclosed: Yes
Contiguous: Yes
Permitted: Yes
Wet space: No
Addition: No
Conversion: No

8 Floor 1 - Kitchen

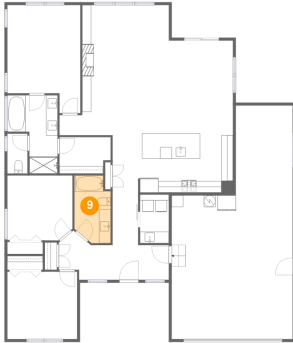


Max Dimensions: 20'10" x 9'11"
Calculated Area: 195 sq. ft
Included: Yes

Heated: Yes
Finished: Yes
Enclosed: Yes
Contiguous: Yes
Permitted: Yes
Wet space: No
Addition: No
Conversion: No

496 Northwest Cascade Mountain Drive, Dallas, Polk County,
Oregon, United States, 97338

9 Floor 1 - Bath



Max Dimensions: 6'3" x
11'8"
Calculated Area: 66 sq. ft
Included: Yes

Heated: Yes
Finished: Yes
Enclosed: Yes
Contiguous:
Yes
Permitted: Yes
Wet space: Yes
Addition: No
Conversion: No

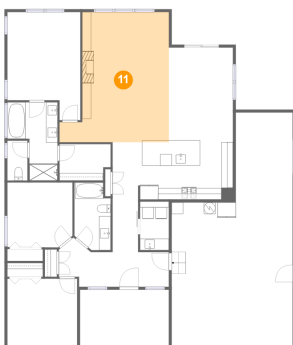
10 Floor 1 - Primary Bath



Max Dimensions: 8'8" x
13'7"
Calculated Area: 90 sq. ft
Included: Yes

Heated: Yes
Finished: Yes
Enclosed: Yes
Contiguous:
Yes
Permitted: Yes
Wet space: Yes
Addition: No
Conversion: No

11 Floor 1 - Living Room

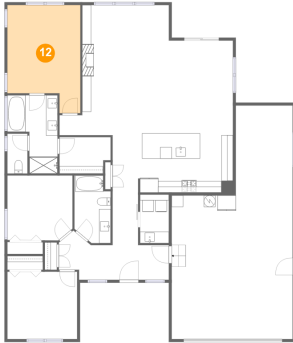


Max Dimensions: 18'11" x
22'6"
Calculated Area: 351 sq. ft
Included: Yes

Heated: Yes
Finished: Yes
Enclosed: Yes
Contiguous:
Yes
Permitted: Yes
Wet space: No
Addition: No
Conversion: No

496 Northwest Cascade Mountain Drive, Dallas, Polk County,
Oregon, United States, 97338

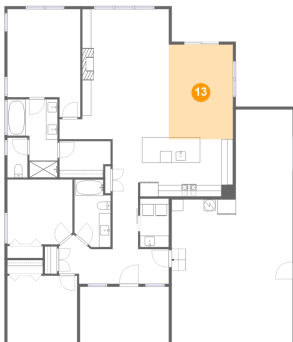
12 Floor 1 - Primary Bedroom



Max Dimensions: 12'8" x 18'8"
Calculated Area: 205 sq. ft
Included: Yes

Heated: Yes
Finished: Yes
Enclosed: Yes
Contiguous: Yes
Permitted: Yes
Wet space: No
Addition: No
Conversion: No

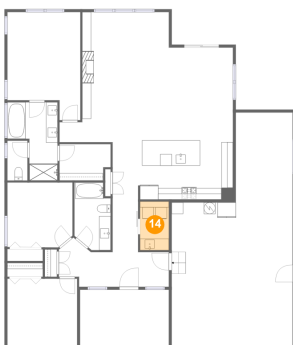
13 Floor 1 - Dining Area



Max Dimensions: 11'1" x 16'4"
Calculated Area: 181 sq. ft
Included: Yes

Heated: Yes
Finished: Yes
Enclosed: Yes
Contiguous: Yes
Permitted: Yes
Wet space: No
Addition: No
Conversion: No

14 Floor 1 - Laundry



Max Dimensions: 5'0" x 8'5"
Calculated Area: 42 sq. ft
Included: Yes

Heated: Yes
Finished: Yes
Enclosed: Yes
Contiguous: Yes
Permitted: Yes
Wet space: No
Addition: No
Conversion: No