



Home report


7785 Navajoa Avenue, Atascadero, San Luis Obispo County,
California, United States, 93422




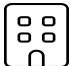
Property summary


 **1** Garages


 **2** Bedrooms

 **2** Bathrooms

 **1** Half baths

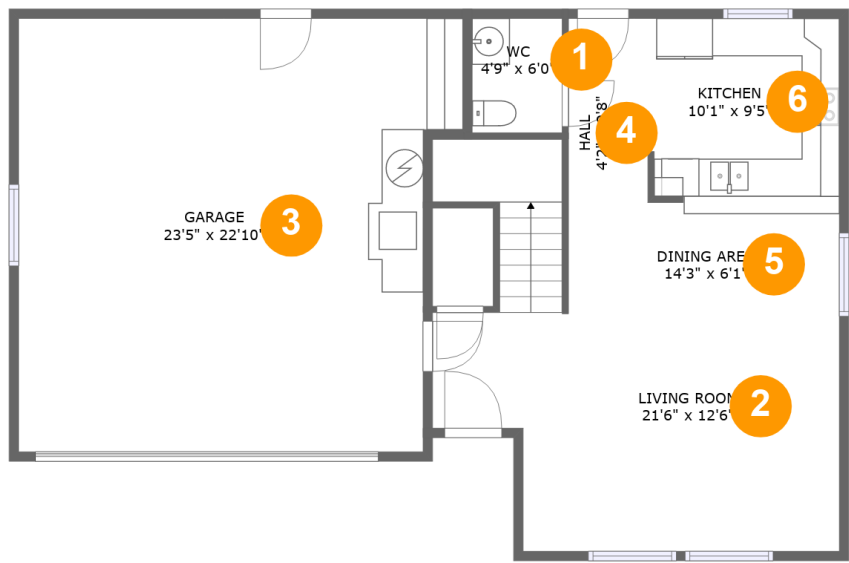
 **2** Floors

 **1,453** Gross living area sqft

 **1,989** Total sqft

Home report

7785 Navajoa Avenue, Atascadero, San Luis Obispo County,
California, United States, 93422



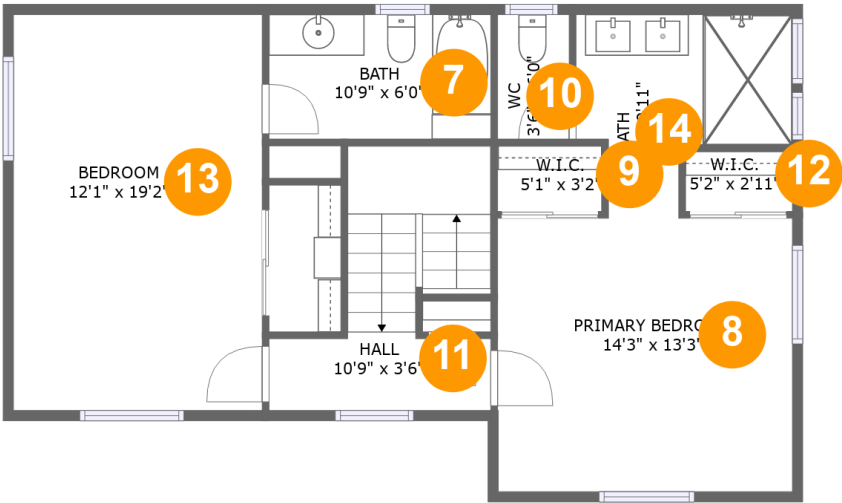
Room dimensions

Floor 1 Total sqft: 1146 Living area: 610

#		Max Dimensions	sqft	Included
1	WC	4'9" x 6'0"	29 sq. ft	Yes
2	Living Room	21'6" x 12'6"	281 sq. ft	Yes
3	Garage	23'5" x 22'10"	501 sq. ft	No
4	Hall	4'2" x 9'8"	41 sq. ft	Yes
5	Dining Area	14'3" x 6'1"	86 sq. ft	Yes
6	Kitchen	10'1" x 9'5"	95 sq. ft	Yes

Home report

7785 Navajoa Avenue, Atascadero, San Luis Obispo County,
California, United States, 93422



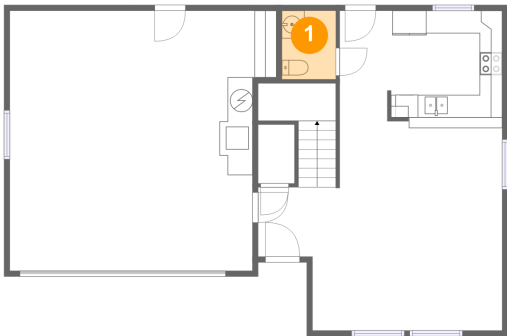
Room dimensions

Floor 2 Total sqft: 843 Living area: 843

#		Max Dimensions	sqft	Included
7	Bath	10'9" x 6'0"	65 sq. ft	Yes
8	Primary Bedroom	14'3" x 13'3"	189 sq. ft	Yes
9	W.I.C.	5'1" x 3'2"	16 sq. ft	Yes
10	WC	3'6" x 6'0"	21 sq. ft	Yes
11	Hall	10'9" x 3'6"	94 sq. ft	Yes
12	W.I.C.	5'2" x 2'11"	15 sq. ft	Yes
13	Bedroom	12'1" x 19'2"	232 sq. ft	Yes
14	Bath	10'6" x 9'11"	78 sq. ft	Yes

7785 Navajoa Avenue, Atascadero, San Luis Obispo County,
California, United States, 93422

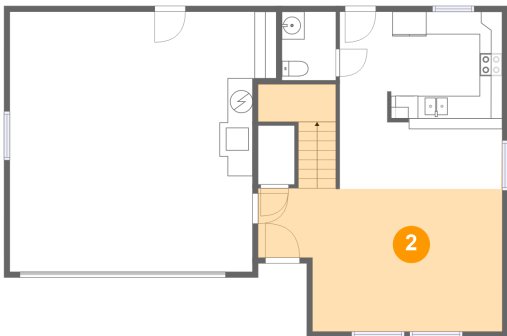
1 Floor 1 - WC



Max Dimensions: 4'9" x 6'0"
Calculated Area: 29 sq. ft
Included: Yes

Heated: Yes
Finished: Yes
Enclosed: Yes
Contiguous: Yes
Permitted: Yes
Wet space: Yes
Addition: No
Conversion: No

2 Floor 1 - Living Room



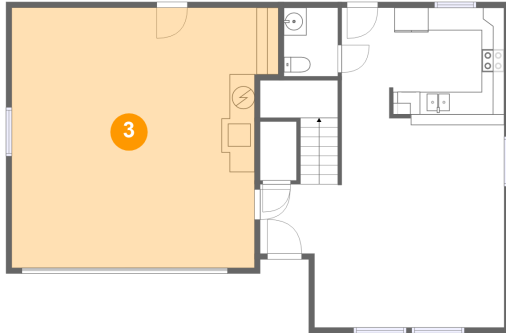
Max Dimensions: 21'6" x 12'6"
Calculated Area: 281 sq. ft
Included: Yes

Heated: Yes
Finished: Yes
Enclosed: Yes
Contiguous: Yes
Permitted: Yes
Wet space: No
Addition: No
Conversion: No

Home report

7785 Navajoa Avenue, Atascadero, San Luis Obispo County,
California, United States, 93422

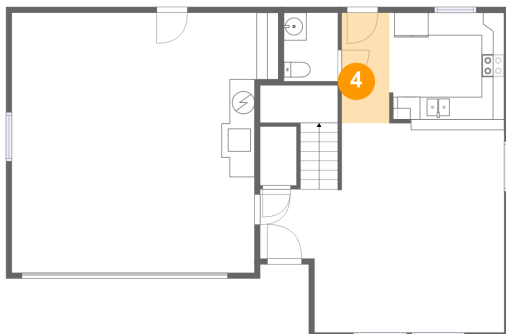
3 Floor 1 - Garage



Max Dimensions: 23'5" x 22'10"
Calculated Area: 501 sq. ft
Included: No

Heated: No
Finished: No
Enclosed: Yes
Contiguous: Yes
Permitted: Yes
Wet space: No
Addition: No
Conversion: No

4 Floor 1 - Hall



Max Dimensions: 4'2" x 9'8"
Calculated Area: 41 sq. ft
Included: Yes

Heated: Yes
Finished: Yes
Enclosed: Yes
Contiguous: Yes
Permitted: Yes
Wet space: No
Addition: No
Conversion: No

5 Floor 1 - Dining Area



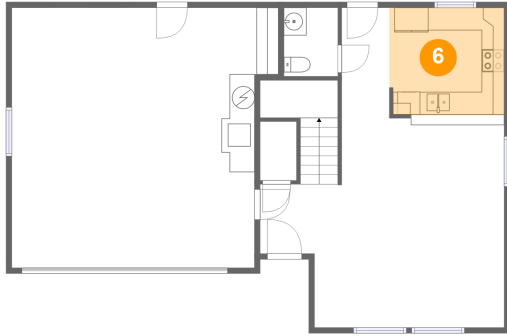
Max Dimensions: 14'3" x 6'1"
Calculated Area: 86 sq. ft
Included: Yes

Heated: Yes
Finished: Yes
Enclosed: Yes
Contiguous: Yes
Permitted: Yes
Wet space: No
Addition: No
Conversion: No

Home report

7785 Navajoa Avenue, Atascadero, San Luis Obispo County,
California, United States, 93422

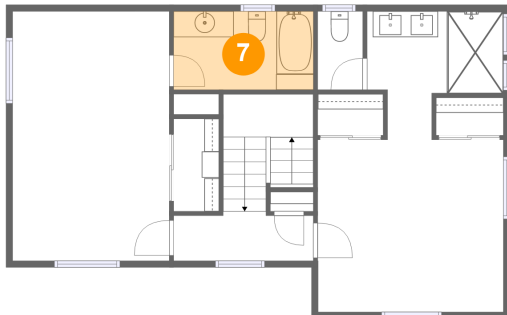
6 Floor 1 - Kitchen



Max Dimensions: 10'1" x 9'5"
Calculated Area: 95 sq. ft
Included: Yes

Heated: Yes
Finished: Yes
Enclosed: Yes
Contiguous: Yes
Permitted: Yes
Wet space: No
Addition: No
Conversion: No

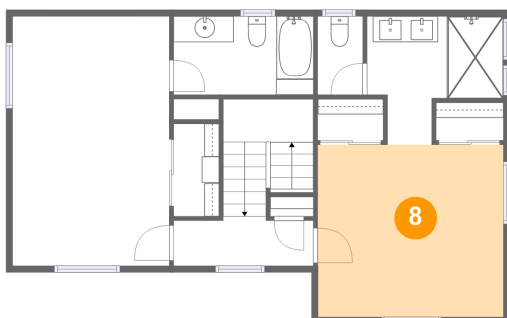
7 Floor 2 - Bath



Max Dimensions: 10'9" x 6'0"
Calculated Area: 65 sq. ft
Included: Yes

Heated: Yes
Finished: Yes
Enclosed: Yes
Contiguous: Yes
Permitted: Yes
Wet space: Yes
Addition: No
Conversion: No

8 Floor 2 - Primary Bedroom



Max Dimensions: 14'3" x 13'3"
Calculated Area: 189 sq. ft
Included: Yes

Heated: Yes
Finished: Yes
Enclosed: Yes
Contiguous: Yes
Permitted: Yes
Wet space: No
Addition: No
Conversion: No

Home report

7785 Navajoa Avenue, Atascadero, San Luis Obispo County,
California, United States, 93422

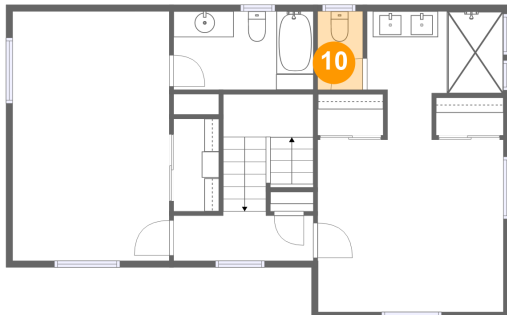
9 Floor 2 - W.I.C.



Max Dimensions: 5'1" x 3'2"
Calculated Area: 16 sq. ft
Included: Yes

Heated: Yes
Finished: Yes
Enclosed: Yes
Contiguous: Yes
Permitted: Yes
Wet space: No
Addition: No
Conversion: No

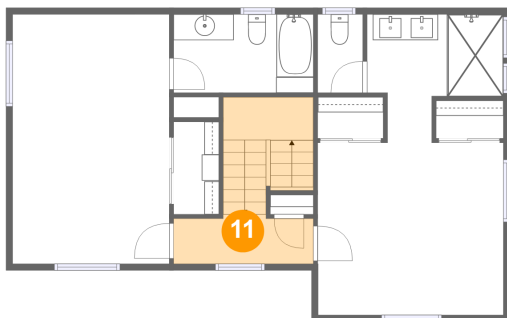
10 Floor 2 - WC



Max Dimensions: 3'6" x 6'0"
Calculated Area: 21 sq. ft
Included: Yes

Heated: Yes
Finished: Yes
Enclosed: Yes
Contiguous: Yes
Permitted: Yes
Wet space: Yes
Addition: No
Conversion: No

11 Floor 2 - Hall



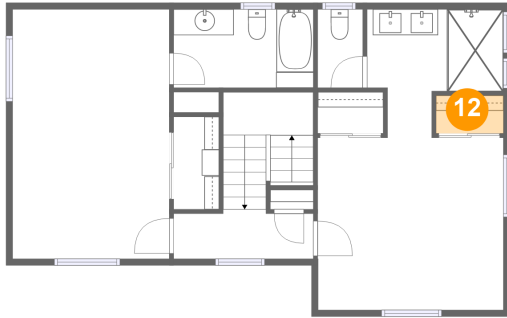
Max Dimensions: 10'9" x 3'6"
Calculated Area: 94 sq. ft
Included: Yes

Heated: Yes
Finished: Yes
Enclosed: Yes
Contiguous: Yes
Permitted: Yes
Wet space: No
Addition: No
Conversion: No

Home report

7785 Navajoa Avenue, Atascadero, San Luis Obispo County,
California, United States, 93422

12 Floor 2 - W.I.C.



Max Dimensions: 5'2" x 2'11"
Calculated Area: 15 sq. ft
Included: Yes

Heated: Yes
Finished: Yes
Enclosed: Yes
Contiguous: Yes
Permitted: Yes
Wet space: No
Addition: No
Conversion: No

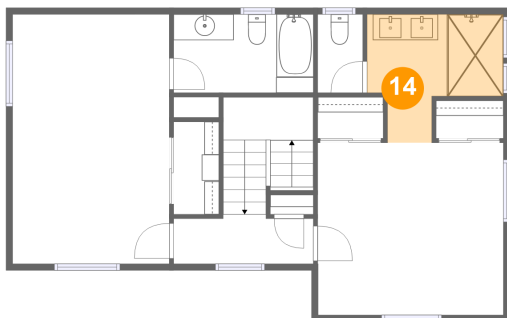
13 Floor 2 - Bedroom



Max Dimensions: 12'1" x 19'2"
Calculated Area: 232 sq. ft
Included: Yes

Heated: Yes
Finished: Yes
Enclosed: Yes
Contiguous: Yes
Permitted: Yes
Wet space: No
Addition: No
Conversion: No

14 Floor 2 - Bath



Max Dimensions: 10'6" x 9'11"
Calculated Area: 78 sq. ft
Included: Yes

Heated: Yes
Finished: Yes
Enclosed: Yes
Contiguous: Yes
Permitted: Yes
Wet space: Yes
Addition: No
Conversion: No