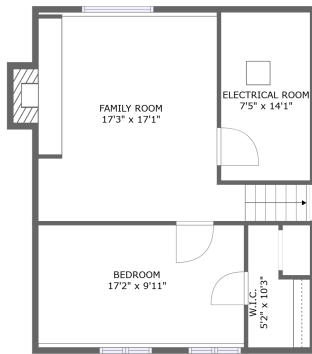
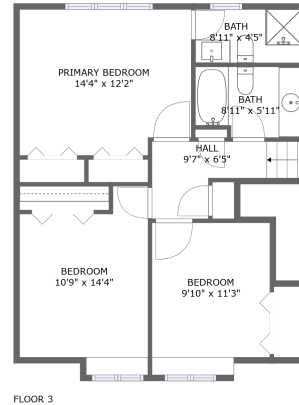
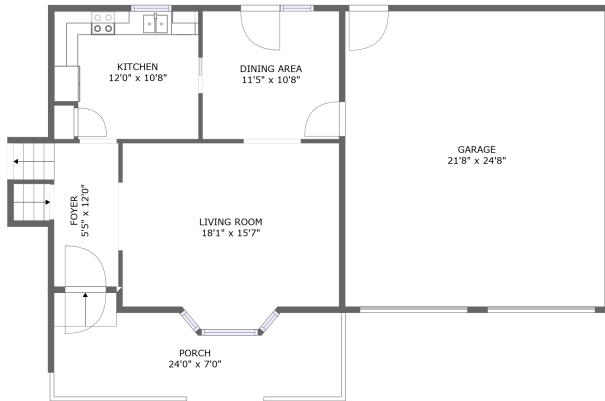


517 Marsha Drive, Andover, Butler County, Kansas, United States, 67002



Property Summary

 **1** garages

 **4** bedrooms

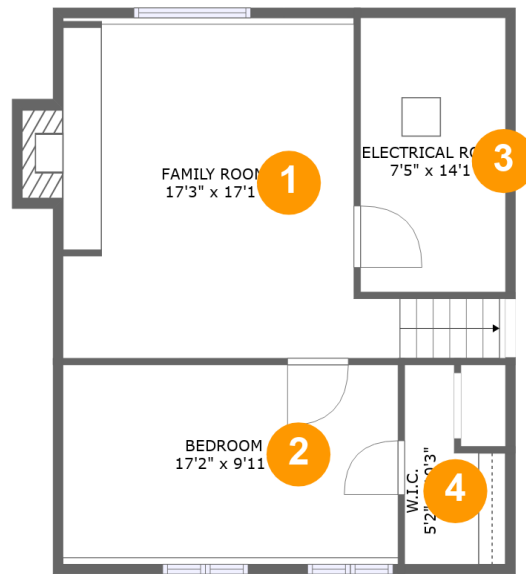
 **2** bathrooms

 **0** half baths

 **3** floors

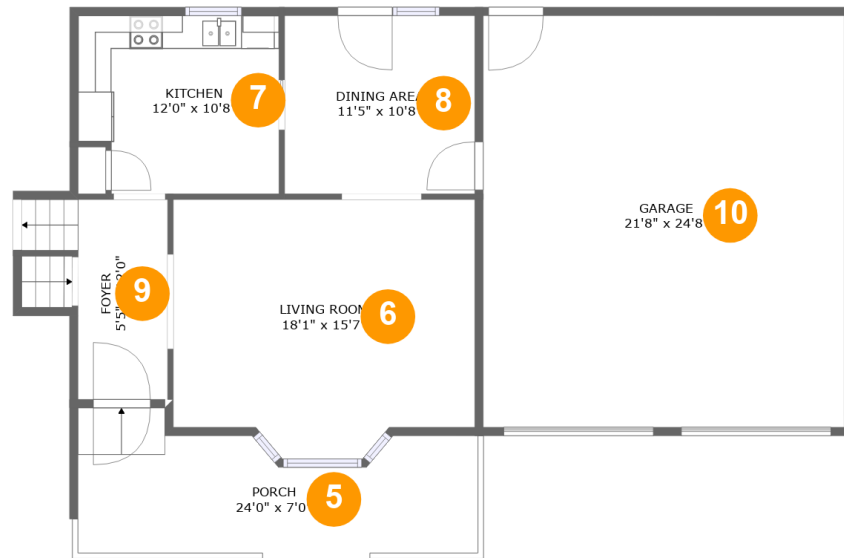
 **1,952** Gross Living Area sqft

 **2,815** total sqft

**517 Marsha Drive, Andover, Butler County,
Kansas, United States, 67002****Room Dimensions****Floor 1****Total sqft: 700****Living area: 572**

#	Room name	Dimensions	Area (sqft)	Counted as Living Area
1	Family Room	17'3" x 17'1"	294 sq. ft	Yes
2	Bedroom	17'2" x 9'11"	176 sq. ft	Yes
3	Electrical Room	7'5" x 14'1"	105 sq. ft	No
4	W.i.c.	5'2" x 10'3"	41 sq. ft	Yes

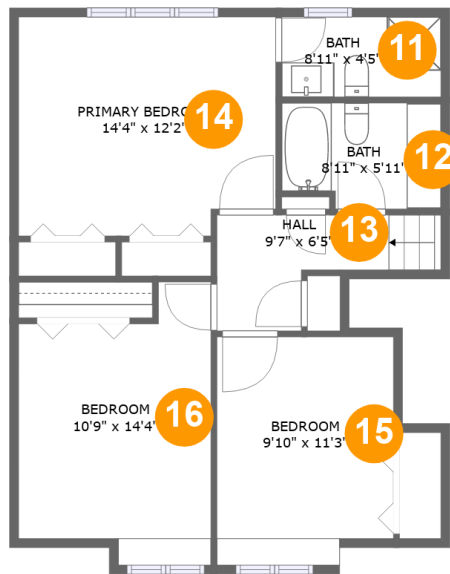
517 Marsha Drive, Andover, Butler County, Kansas, United States, 67002



Room Dimensions

Floor 2**Total sqft: 1401****Living area: 666**

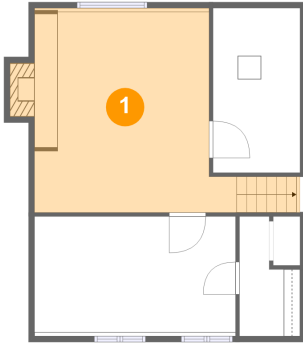
#	Room name	Dimensions	Area (sqft)	Counted as Living Area
5	Porch	24'0" x 7'0"	165 sq. ft	No
6	Living Room	18'1" x 15'7"	260 sq. ft	Yes
7	Kitchen	12'0" x 10'8"	129 sq. ft	Yes
8	Dining Area	11'5" x 10'8"	122 sq. ft	Yes
9	Foyer	5'5" x 12'0"	75 sq. ft	Yes
10	Garage	21'8" x 24'8"	535 sq. ft	No

**517 Marsha Drive, Andover, Butler County,
Kansas, United States, 67002****Room Dimensions****Floor 3****Total sqft: 714****Living area: 714**

#	Room name	Dimensions	Area (sqft)	Counted as Living Area
11	Bath	8'11" x 4'5"	40 sq. ft	Yes
12	Bath	8'11" x 5'11"	49 sq. ft	Yes
13	Hall	9'7" x 6'5"	54 sq. ft	Yes
14	Primary Bedroom	14'4" x 12'2"	170 sq. ft	Yes
15	Bedroom	9'10" x 11'3"	111 sq. ft	Yes
16	Bedroom	10'9" x 14'4"	143 sq. ft	Yes

517 Marsha Drive, Andover, Butler County, Kansas, United States, 67002

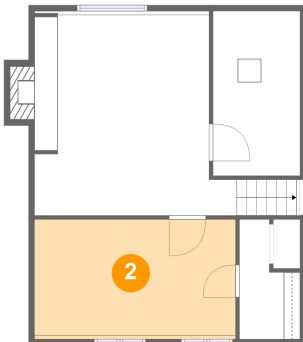
1 Floor 1 - Family Room



Dimensions: 17'3" x 17'1"
Area: 294 sq. ft
Counted as Living Area:
Yes

Heated: Yes
Finished: Yes
Enclosed: Yes
Contiguous:
Yes
Permitted: Yes
Wet Space: No
Addition: No
Conversion: No

2 Floor 1 - Bedroom

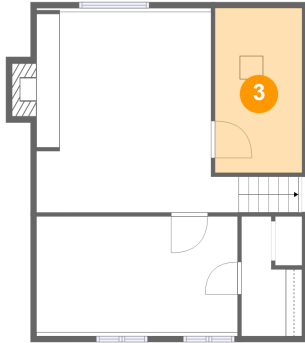


Dimensions: 17'2" x 9'11"
Area: 176 sq. ft
Counted as Living Area:
Yes

Heated: Yes
Finished: Yes
Enclosed: Yes
Contiguous:
Yes
Permitted: Yes
Wet Space: No
Addition: No
Conversion: No

**517 Marsha Drive, Andover, Butler County,
Kansas, United States, 67002**

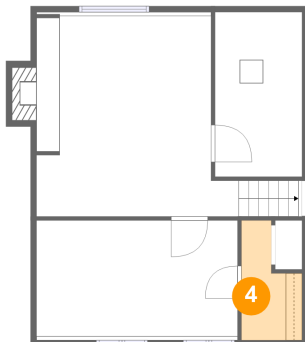
3 Floor 1 - Electrical Room



Dimensions: 7'5" x 14'1"
Area: 105 sq. ft
Counted as Living Area: No

Heated: No
Finished: No
Enclosed: Yes
Contiguous: Yes
Permitted: Yes
Wet Space: No
Addition: No
Conversion: No

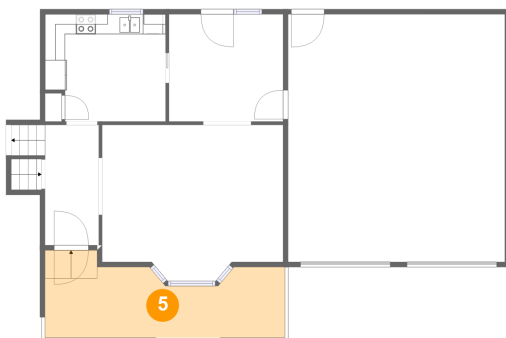
4 Floor 1 - W.i.c.



Dimensions: 5'2" x 10'3"
Area: 41 sq. ft
Counted as Living Area: Yes

Heated: Yes
Finished: Yes
Enclosed: Yes
Contiguous: Yes
Permitted: Yes
Wet Space: No
Addition: No
Conversion: No

5 Floor 2 - Porch

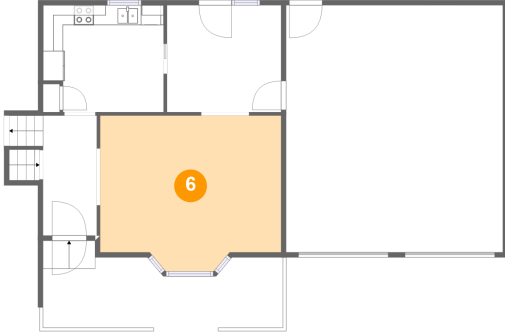


Dimensions: 24'0" x 7'0"
Area: 165 sq. ft
Counted as Living Area: No

Heated: No
Finished: Yes
Enclosed: No
Contiguous: Yes
Permitted: Yes
Wet Space: No
Addition: No
Conversion: No

**517 Marsha Drive, Andover, Butler County,
Kansas, United States, 67002**

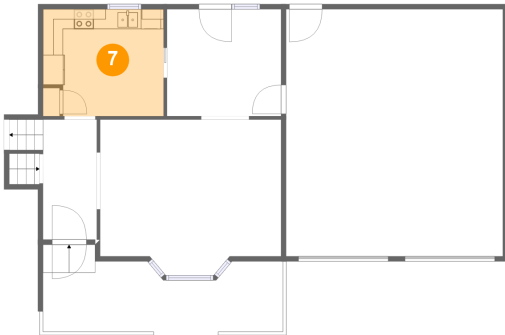
6 Floor 2 - Living Room



Dimensions: 18'1" x 15'7"
Area: 260 sq. ft
Counted as Living Area:
Yes

Heated: Yes
Finished: Yes
Enclosed: Yes
Contiguous:
Yes
Permitted: Yes
Wet Space: No
Addition: No
Conversion: No

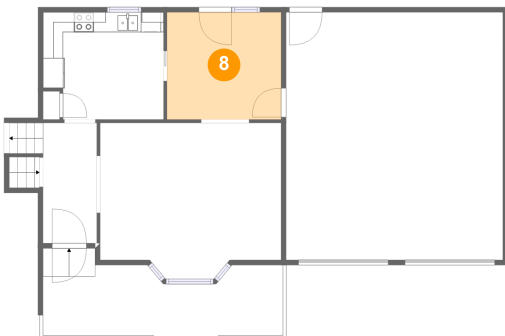
7 Floor 2 - Kitchen



Dimensions: 12'0" x 10'8"
Area: 129 sq. ft
Counted as Living Area:
Yes

Heated: Yes
Finished: Yes
Enclosed: Yes
Contiguous:
Yes
Permitted: Yes
Wet Space: No
Addition: No
Conversion: No

8 Floor 2 - Dining Area

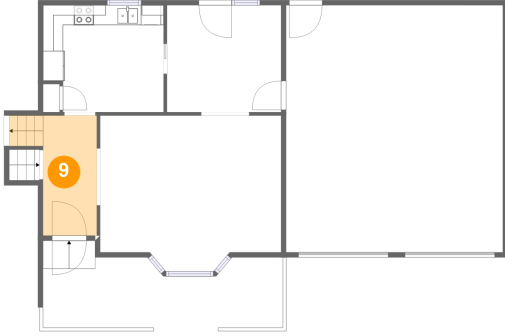


Dimensions: 11'5" x 10'8"
Area: 122 sq. ft
Counted as Living Area:
Yes

Heated: Yes
Finished: Yes
Enclosed: Yes
Contiguous:
Yes
Permitted: Yes
Wet Space: No
Addition: No
Conversion: No

**517 Marsha Drive, Andover, Butler County,
Kansas, United States, 67002**

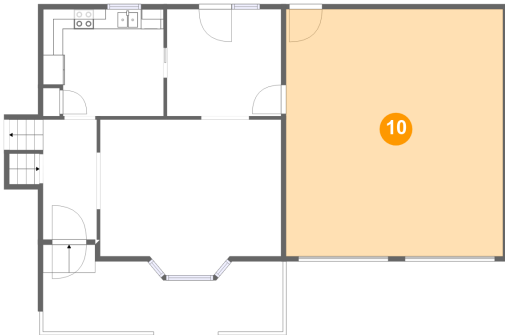
9 Floor 2 - Foyer



Dimensions: 5'5" x 12'0"
Area: 75 sq. ft
Counted as Living Area:
Yes

Heated: Yes
Finished: Yes
Enclosed: Yes
Contiguous:
Yes
Permitted: Yes
Wet Space: No
Addition: No
Conversion: No

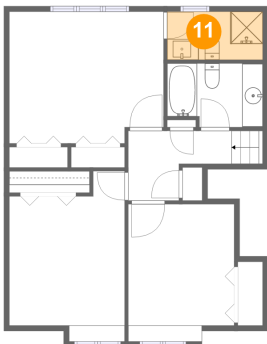
10 Floor 2 - Garage



Dimensions: 21'8" x 24'8"
Area: 535 sq. ft
Counted as Living Area: No

Heated: No
Finished: No
Enclosed: Yes
Contiguous: Yes
Permitted: Yes
Wet Space: No
Addition: No
Conversion: No

11 Floor 3 - Bath

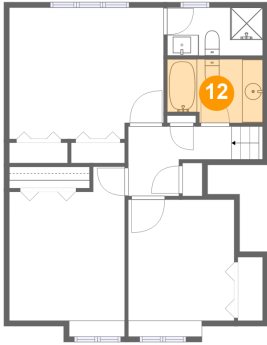


Dimensions: 8'11" x 4'5"
Area: 40 sq. ft
Counted as Living Area:
Yes

Heated: Yes
Finished: Yes
Enclosed: Yes
Contiguous:
Yes
Permitted: Yes
Wet Space: Yes
Addition: No
Conversion: No

517 Marsha Drive, Andover, Butler County, Kansas, United States, 67002

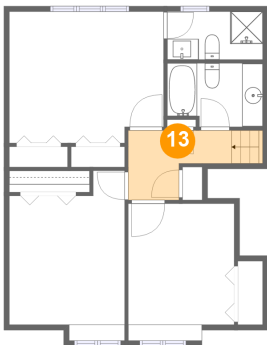
12 Floor 3 - Bath



Dimensions: 8'11" x 5'11"
Area: 49 sq. ft
Counted as Living Area:
Yes

Heated: Yes
Finished: Yes
Enclosed: Yes
Contiguous:
Yes
Permitted: Yes
Wet Space: Yes
Addition: No
Conversion: No

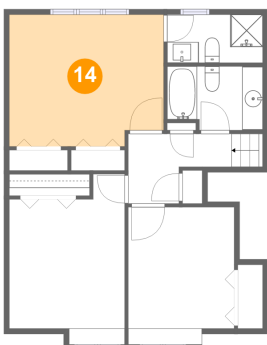
13 Floor 3 - Hall



Dimensions: 9'7" x 6'5"
Area: 54 sq. ft
Counted as Living Area:
Yes

Heated: Yes
Finished: Yes
Enclosed: Yes
Contiguous:
Yes
Permitted: Yes
Wet Space: No
Addition: No
Conversion: No

14 Floor 3 - Primary Bedroom

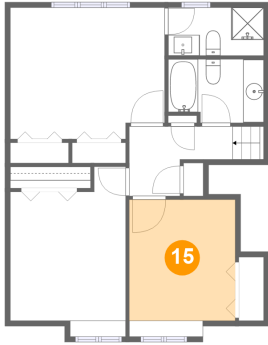


Dimensions: 14'4" x 12'2"
Area: 170 sq. ft
Counted as Living Area:
Yes

Heated: Yes
Finished: Yes
Enclosed: Yes
Contiguous:
Yes
Permitted: Yes
Wet Space: No
Addition: No
Conversion: No

**517 Marsha Drive, Andover, Butler County,
Kansas, United States, 67002**

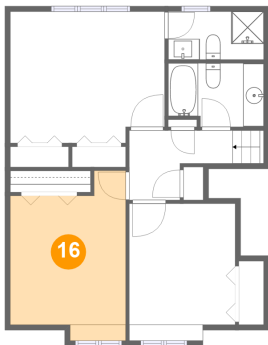
15 Floor 3 - Bedroom



Dimensions: 9'10" x 11'3"
Area: 111 sq. ft
Counted as Living Area:
Yes

Heated: Yes
Finished: Yes
Enclosed: Yes
Contiguous:
Yes
Permitted: Yes
Wet Space: No
Addition: No
Conversion: No

16 Floor 3 - Bedroom



Dimensions: 10'9" x 14'4"
Area: 143 sq. ft
Counted as Living Area:
Yes

Heated: Yes
Finished: Yes
Enclosed: Yes
Contiguous:
Yes
Permitted: Yes
Wet Space: No
Addition: No
Conversion: No