


Home report


11 Stewart Road, Essex Fells, Essex County, New Jersey, United States, 07021




Property summary




1
Garages



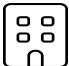
4
Bedrooms




2
Bathrooms




2
Half baths



3
Floors



6,629
Gross living
area sqft

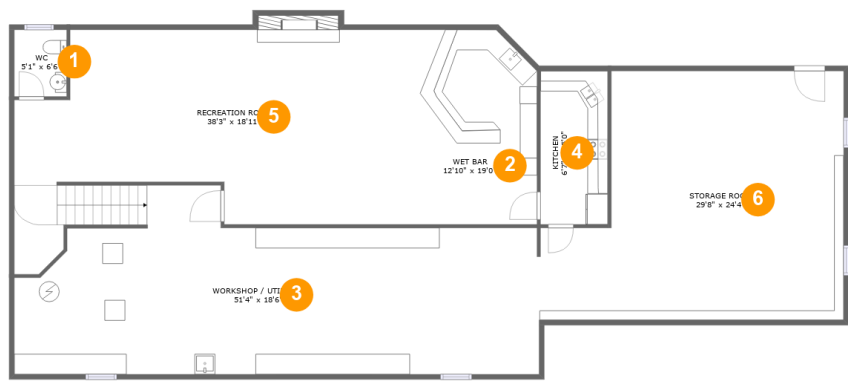


9,482
Total sqft

Scan captured on Fri, 18 Apr 2025 23:18:10 GMT

Home report

11 Stewart Road, Essex Fells, Essex County, New Jersey, United States, 07021



Room dimensions

Floor 1 Total sqft: 2568 Living area: 1781

#		Dimensions	sqft	Counted as living area
1	WC	5'1" x 6'6"	33 sq. ft	Yes
2	Wet Bar	12'10" x 19'0"	235 sq. ft	Yes
3	Workshop / Utilities	51'4" x 18'6"	742 sq. ft	No
4	Kitchen	6'7" x 15'0"	99 sq. ft	Yes
5	Recreation Room	38'3" x 18'11"	688 sq. ft	Yes
6	Storage Room	29'8" x 24'4"	615 sq. ft	Yes

Home report

11 Stewart Road, Essex Fells, Essex County, New Jersey, United States, 07021



Room dimensions

Floor 2 Total sqft: 4043 Living area: 2676

#		Dimensions	sqft	Counted as living area
7	Kitchen	11'5" x 14'10"	170 sq. ft	Yes
8	Breakfast Area	16'0" x 19'9"	195 sq. ft	Yes
9	Dining Room	23'6" x 14'10"	348 sq. ft	Yes
10	Laundry	7'1" x 11'3"	69 sq. ft	Yes
11	Family Room	29'5" x 25'6"	757 sq. ft	Yes
12	Porch	8'11" x 10'10"	97 sq. ft	No
13	Den	17'8" x 14'3"	252 sq. ft	Yes
14	Living Room	17'5" x 18'6"	321 sq. ft	Yes
15	WC	6'7" x 3'11"	26 sq. ft	Yes
16	Garage	23'9" x 23'4"	555 sq. ft	No
17	Foyer	15'7" x 14'3"	193 sq. ft	Yes

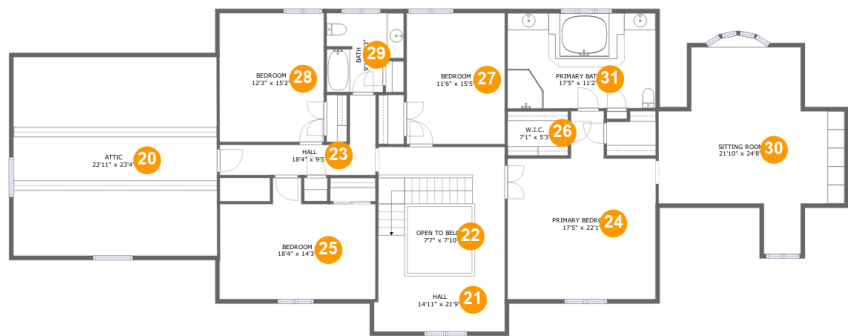
Home report

11 Stewart Road, Essex Fells, Essex County, New Jersey, United States, 07021

#		Dimensions	sqft	Counted as living area
18	Hall	20'3" x 3'11"	78 sq. ft	Yes
19	Patio	36'6" x 21'10"	679 sq. ft	No

Home report

11 Stewart Road, Essex Fells, Essex County, New Jersey, United States, 07021



Room dimensions

Floor 3

Total sqft: 2871

Living area: 2172

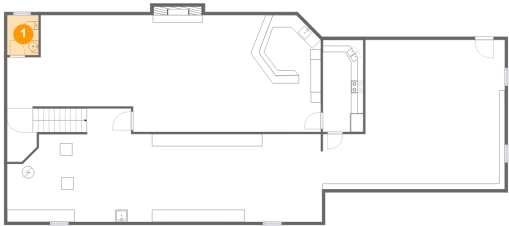
#		Dimensions	sqft	Counted as living area
20	Attic	23'11" x 23'4"	233 sq. ft	No
21	Hall	14'11" x 21'9"	325 sq. ft	No
22	Open To Below	7'7" x 7'10"	60 sq. ft	No
23	Hall	18'4" x 9'5"	83 sq. ft	Yes
24	Primary Bedroom	17'5" x 22'1"	310 sq. ft	Yes
25	Bedroom	18'4" x 14'3"	215 sq. ft	Yes
26	W.I.C.	7'1" x 5'3"	37 sq. ft	Yes
27	Bedroom	11'6" x 15'5"	178 sq. ft	Yes
28	Bedroom	12'3" x 15'2"	186 sq. ft	Yes
29	Bath	9'1" x 9'3"	74 sq. ft	Yes
30	Sitting Room	21'10" x 24'8"	337 sq. ft	Yes

Home report

11 Stewart Road, Essex Fells, Essex County, New Jersey, United States, 07021

#		Dimensions	sqft	Counted as living area
31	Primary Bath	17'5" x 11'2"	194 sq. ft	Yes

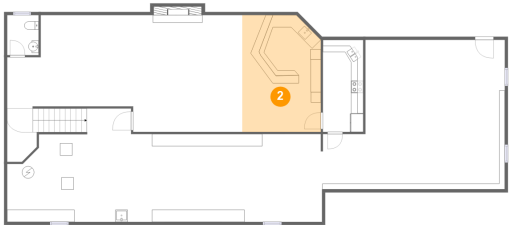
1 Floor 1 - WC



Dimensions: 5'1" x 6'6"
Area: 33 sq. ft
Counted as living area: Yes

Heated: Yes
Finished: Yes
Enclosed: Yes
Contiguous: Yes
Permitted: Yes
Wet space: Yes
Addition: No
Conversion: No

2 Floor 1 - Wet Bar

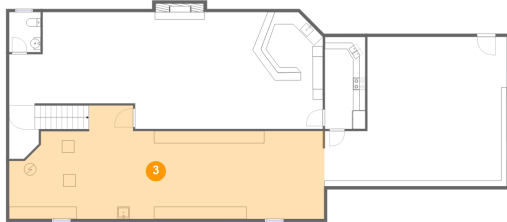


Dimensions: 12'10" x 19'0"
Area: 235 sq. ft
Counted as living area: Yes

Heated: Yes
Finished: Yes
Enclosed: Yes
Contiguous: Yes
Permitted: Yes
Wet space: No
Addition: No
Conversion: No

11 Stewart Road, Essex Fells, Essex County, New Jersey, United States, 07021

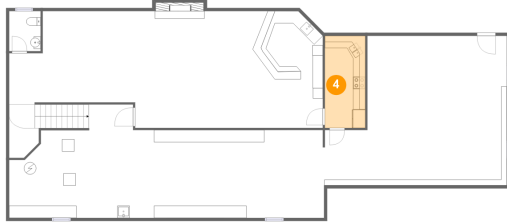
3 Floor 1 - Workshop / Utilities



Dimensions: 51'4" x 18'6"
Area: 742 sq. ft
Counted as living area: No

Heated: No
Finished: No
Enclosed: Yes
Contiguous: Yes
Permitted: Yes
Wet space: No
Addition: No
Conversion: No

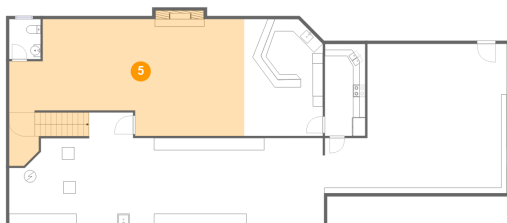
4 Floor 1 - Kitchen



Dimensions: 6'7" x 15'0"
Area: 99 sq. ft
Counted as living area: Yes

Heated: Yes
Finished: Yes
Enclosed: Yes
Contiguous: Yes
Permitted: Yes
Wet space: No
Addition: No
Conversion: No

5 Floor 1 - Recreation Room

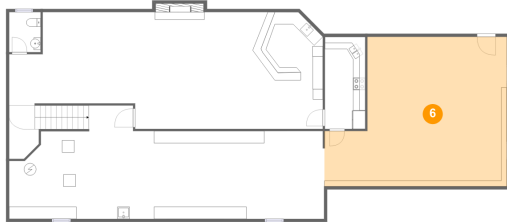


Dimensions: 38'3" x 18'11"
Area: 688 sq. ft
Counted as living area: Yes

Heated: Yes
Finished: Yes
Enclosed: Yes
Contiguous: Yes
Permitted: Yes
Wet space: No
Addition: No
Conversion: No

11 Stewart Road, Essex Fells, Essex County, New Jersey, United States, 07021

6 Floor 1 - Storage Room



Dimensions: 29'8" x 24'4"
Area: 615 sq. ft
Counted as living area: Yes

Heated: Yes
Finished: Yes
Enclosed: Yes
Contiguous: Yes
Permitted: Yes
Wet space: No
Addition: No
Conversion: No

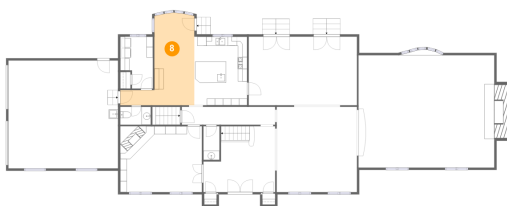
7 Floor 2 - Kitchen



Dimensions: 11'5" x 14'10"
Area: 170 sq. ft
Counted as living area: Yes

Heated: Yes
Finished: Yes
Enclosed: Yes
Contiguous: Yes
Permitted: Yes
Wet space: No
Addition: No
Conversion: No

8 Floor 2 - Breakfast Area

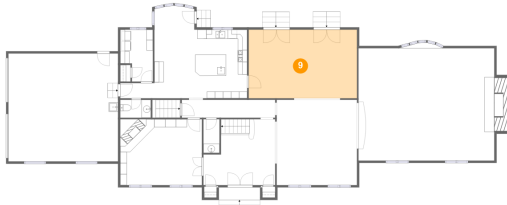


Dimensions: 16'0" x 19'9"
Area: 195 sq. ft
Counted as living area: Yes

Heated: Yes
Finished: Yes
Enclosed: Yes
Contiguous: Yes
Permitted: Yes
Wet space: No
Addition: No
Conversion: No

11 Stewart Road, Essex Fells, Essex County, New Jersey, United States, 07021

9 Floor 2 - Dining Room



Dimensions: 23'6" x 14'10"
Area: 348 sq. ft
Counted as living area: Yes

Heated: Yes
Finished: Yes
Enclosed: Yes
Contiguous: Yes
Permitted: Yes
Wet space: No
Addition: No
Conversion: No

10 Floor 2 - Laundry



Dimensions: 7'1" x 11'3"
Area: 69 sq. ft
Counted as living area: Yes

Heated: Yes
Finished: Yes
Enclosed: Yes
Contiguous: Yes
Permitted: Yes
Wet space: No
Addition: No
Conversion: No

11 Floor 2 - Family Room

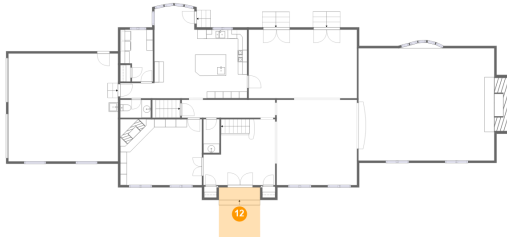


Dimensions: 29'5" x 25'6"
Area: 757 sq. ft
Counted as living area: Yes

Heated: Yes
Finished: Yes
Enclosed: Yes
Contiguous: Yes
Permitted: Yes
Wet space: No
Addition: No
Conversion: No

11 Stewart Road, Essex Fells, Essex County, New Jersey, United States, 07021

12 Floor 2 - Porch



Dimensions: 8'11" x 10'10"
Area: 97 sq. ft
Counted as living area: No

Heated: No
Finished: Yes
Enclosed: No
Contiguous: Yes
Permitted: Yes
Wet space: No
Addition: No
Conversion: No

13 Floor 2 - Den



Dimensions: 17'8" x 14'3"
Area: 252 sq. ft
Counted as living area: Yes

Heated: Yes
Finished: Yes
Enclosed: Yes
Contiguous: Yes
Permitted: Yes
Wet space: No
Addition: No
Conversion: No

14 Floor 2 - Living Room



Dimensions: 17'5" x 18'6"
Area: 321 sq. ft
Counted as living area: Yes

Heated: Yes
Finished: Yes
Enclosed: Yes
Contiguous: Yes
Permitted: Yes
Wet space: No
Addition: No
Conversion: No

Home report

11 Stewart Road, Essex Fells, Essex County, New Jersey, United States, 07021

15 Floor 2 - WC



Dimensions: 6'7" x 3'11"
Area: 26 sq. ft
Counted as living area: Yes

Heated: Yes
Finished: Yes
Enclosed: Yes
Contiguous: Yes
Permitted: Yes
Wet space: Yes
Addition: No
Conversion: No

16 Floor 2 - Garage



Dimensions: 23'9" x 23'4"
Area: 555 sq. ft
Counted as living area: No

Heated: No
Finished: No
Enclosed: Yes
Contiguous: Yes
Permitted: Yes
Wet space: No
Addition: No
Conversion: No

17 Floor 2 - Foyer



Dimensions: 15'7" x 14'3"
Area: 193 sq. ft
Counted as living area: Yes

Heated: Yes
Finished: Yes
Enclosed: Yes
Contiguous: Yes
Permitted: Yes
Wet space: No
Addition: No
Conversion: No

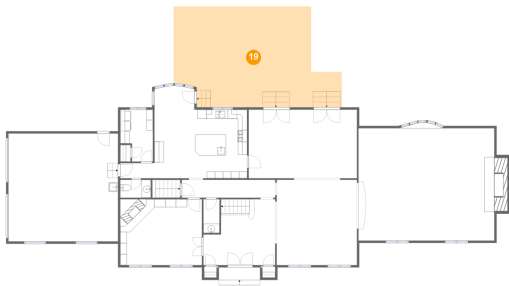
18 Floor 2 - Hall



Dimensions: 20'3" x 3'11"
Area: 78 sq. ft
Counted as living area: Yes

Heated: Yes
Finished: Yes
Enclosed: Yes
Contiguous: Yes
Permitted: Yes
Wet space: No
Addition: No
Conversion: No

19 Floor 2 - Patio



Dimensions: 36'6" x 21'10"
Area: 679 sq. ft
Counted as living area: No

Heated: No
Finished: Yes
Enclosed: No
Contiguous: Yes
Permitted: Yes
Wet space: No
Addition: No
Conversion: No

20 Floor 3 - Attic



Dimensions: 23'11" x 23'4"
Area: 233 sq. ft
Counted as living area: No

Heated: No
Finished: No
Enclosed: Yes
Contiguous: Yes
Permitted: Yes
Wet space: No
Addition: No
Conversion: No

21 Floor 3 - Hall



Dimensions: 14'11" x 21'9"
Area: 325 sq. ft
Counted as living area: No

Heated: Yes
Finished: Yes
Enclosed: Yes
Contiguous: Yes
Permitted: Yes
Wet space: No
Addition: No
Conversion: No

22 Floor 3 - Open To Below



Dimensions: 7'7" x 7'10"
Area: 60 sq. ft
Counted as living area: No

Heated: No
Finished: No
Enclosed: No
Contiguous: Yes
Permitted: No
Wet space: No
Addition: No
Conversion: No

23 Floor 3 - Hall



Dimensions: 18'4" x 9'5"
Area: 83 sq. ft
Counted as living area: Yes

Heated: Yes
Finished: Yes
Enclosed: Yes
Contiguous: Yes
Permitted: Yes
Wet space: No
Addition: No
Conversion: No

11 Stewart Road, Essex Fells, Essex County, New Jersey, United States, 07021

24 Floor 3 - Primary Bedroom



Dimensions: 17'5" x 22'1"
Area: 310 sq. ft
Counted as living area: Yes

Heated: Yes
Finished: Yes
Enclosed: Yes
Contiguous: Yes
Permitted: Yes
Wet space: No
Addition: No
Conversion: No

25 Floor 3 - Bedroom



Dimensions: 18'4" x 14'3"
Area: 215 sq. ft
Counted as living area: Yes

Heated: Yes
Finished: Yes
Enclosed: Yes
Contiguous: Yes
Permitted: Yes
Wet space: No
Addition: No
Conversion: No

26 Floor 3 - W.I.C.



Dimensions: 7'1" x 5'3"
Area: 37 sq. ft
Counted as living area: Yes

Heated: Yes
Finished: Yes
Enclosed: Yes
Contiguous: Yes
Permitted: Yes
Wet space: No
Addition: No
Conversion: No

11 Stewart Road, Essex Fells, Essex County, New Jersey, United States, 07021

27 Floor 3 - Bedroom



Dimensions: 11'6" x 15'5"
Area: 178 sq. ft
Counted as living area: Yes

Heated: Yes
Finished: Yes
Enclosed: Yes
Contiguous: Yes
Permitted: Yes
Wet space: No
Addition: No
Conversion: No

28 Floor 3 - Bedroom



Dimensions: 12'3" x 15'2"
Area: 186 sq. ft
Counted as living area: Yes

Heated: Yes
Finished: Yes
Enclosed: Yes
Contiguous: Yes
Permitted: Yes
Wet space: No
Addition: No
Conversion: No

29 Floor 3 - Bath



Dimensions: 9'1" x 9'3"
Area: 74 sq. ft
Counted as living area: Yes

Heated: Yes
Finished: Yes
Enclosed: Yes
Contiguous: Yes
Permitted: Yes
Wet space: Yes
Addition: No
Conversion: No

30 Floor 3 - Sitting Room



Dimensions: 21'10" x 24'8"
Area: 337 sq. ft
Counted as living area: Yes

Heated: Yes
Finished: Yes
Enclosed: Yes
Contiguous: Yes
Permitted: Yes
Wet space: No
Addition: No
Conversion: No

31 Floor 3 - Primary Bath



Dimensions: 17'5" x 11'2"
Area: 194 sq. ft
Counted as living area: Yes

Heated: Yes
Finished: Yes
Enclosed: Yes
Contiguous: Yes
Permitted: Yes
Wet space: Yes
Addition: No
Conversion: No