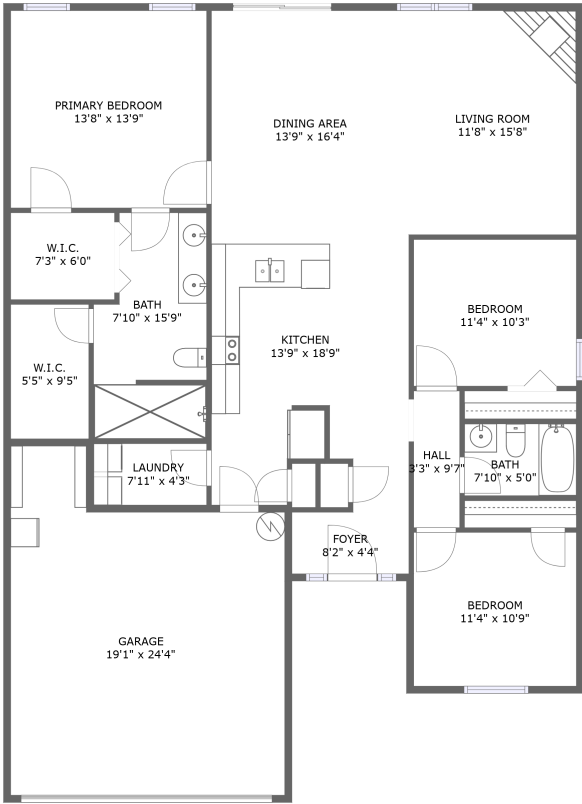


Home report

21243 Barley Terrace Drive, Elkmont, Limestone County,  
Alabama, United States, 35620



FLOOR 1


Total Area: 1637 sq. ft

Floor 1: 1637 sq. ft

Excluded: Garage 402 sq. ft

Property summary

 1 Floors

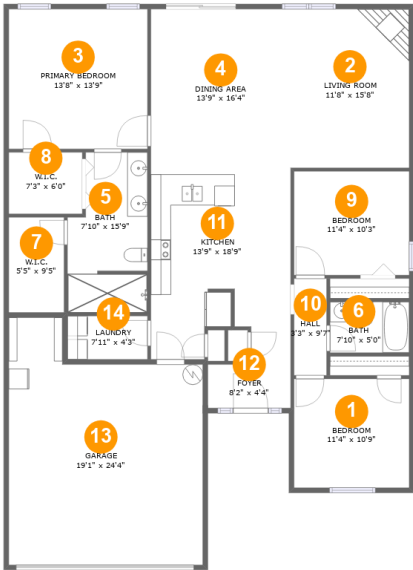
 3 Bedrooms

 2 Bathrooms

 1 Garages

Home report

21243 Barley Terrace Drive, Elkmont, Limestone County,  
Alabama, United States, 35620



Room dimensions

Floor 1 Total:1637sqft   Excluded: 402sqft

#		Max Dimensions	sqft	Included
1	Bedroom	11'4" x 10'9"	122 sq. ft	Yes
2	Living Room	11'8" x 15'8"	183 sq. ft	Yes
3	Primary Bedroom	13'8" x 13'9"	188 sq. ft	Yes
4	Dining Area	13'9" x 16'4"	224 sq. ft	Yes
5	Bath	7'10" x 15'9"	111 sq. ft	Yes
6	Bath	7'10" x 5'0"	39 sq. ft	Yes
7	W.I.C.	5'5" x 9'5"	51 sq. ft	Yes
8	W.I.C.	7'3" x 6'0"	44 sq. ft	Yes
9	Bedroom	11'4" x 10'3"	116 sq. ft	Yes
10	Hall	3'3" x 9'7"	31 sq. ft	Yes
11	Kitchen	13'9" x 18'9"	236 sq. ft	Yes

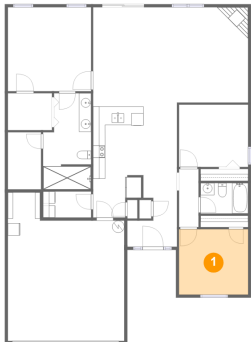
Home report

21243 Barley Terrace Drive, Elkmont, Limestone County,  
Alabama, United States, 35620

#		Max Dimensions	sqft	Included
12	Foyer	8'2" x 4'4"	35 sq. ft	Yes
13	Garage	19'1" x 24'4"	402 sq. ft	No
14	Laundry	7'11" x 4'3"	34 sq. ft	Yes

21243 Barley Terrace Drive, Elkmont, Limestone County,  
Alabama, United States, 35620

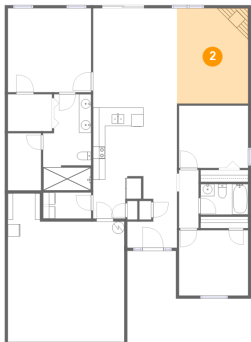
1 Floor 1 - Bedroom



Max Dimensions: 11'4" x 10'9"  
Calculated Area: 122 sq. ft  
Included: Yes

Heated: Yes  
Finished: Yes  
Enclosed: Yes  
Contiguous: Yes  
Permitted: Yes  
Wet space: No  
Addition: No  
Conversion: No

2 Floor 1 - Living Room



Max Dimensions: 11'8" x 15'8"  
Calculated Area: 183 sq. ft  
Included: Yes

Heated: Yes  
Finished: Yes  
Enclosed: Yes  
Contiguous: Yes  
Permitted: Yes  
Wet space: No  
Addition: No  
Conversion: No

21243 Barley Terrace Drive, Elkmont, Limestone County,  
Alabama, United States, 35620

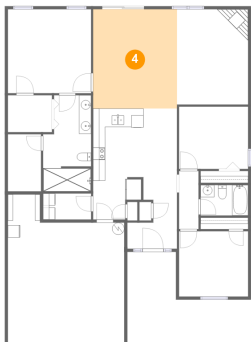
3 Floor 1 - Primary Bedroom



Max Dimensions: 13'8" x 13'9"  
Calculated Area: 188 sq. ft  
Included: Yes

Heated: Yes  
Finished: Yes  
Enclosed: Yes  
Contiguous: Yes  
Permitted: Yes  
Wet space: No  
Addition: No  
Conversion: No

4 Floor 1 - Dining Area



Max Dimensions: 13'9" x 16'4"  
Calculated Area: 224 sq. ft  
Included: Yes

Heated: Yes  
Finished: Yes  
Enclosed: Yes  
Contiguous: Yes  
Permitted: Yes  
Wet space: No  
Addition: No  
Conversion: No

5 Floor 1 - Bath



Max Dimensions: 7'10" x 15'9"  
Calculated Area: 111 sq. ft  
Included: Yes

Heated: Yes  
Finished: Yes  
Enclosed: Yes  
Contiguous: Yes  
Permitted: Yes  
Wet space: Yes  
Addition: No  
Conversion: No

21243 Barley Terrace Drive, Elkmont, Limestone County,  
Alabama, United States, 35620

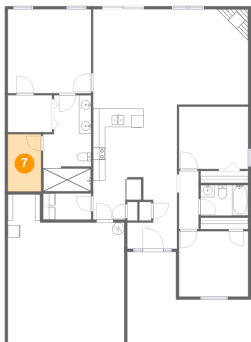
6 Floor 1 - Bath



Max Dimensions: 7'10" x 5'0"  
Calculated Area: 39 sq. ft  
Included: Yes

Heated: Yes  
Finished: Yes  
Enclosed: Yes  
Contiguous: Yes  
Permitted: Yes  
Wet space: Yes  
Addition: No  
Conversion: No

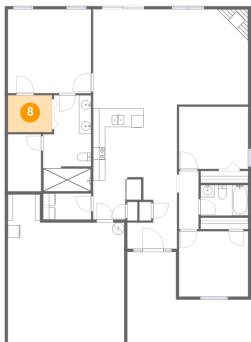
7 Floor 1 - W.I.C.



Max Dimensions: 5'5" x 9'5"  
Calculated Area: 51 sq. ft  
Included: Yes

Heated: Yes  
Finished: Yes  
Enclosed: Yes  
Contiguous: Yes  
Permitted: Yes  
Wet space: No  
Addition: No  
Conversion: No

8 Floor 1 - W.I.C.



Max Dimensions: 7'3" x 6'0"  
Calculated Area: 44 sq. ft  
Included: Yes

Heated: Yes  
Finished: Yes  
Enclosed: Yes  
Contiguous: Yes  
Permitted: Yes  
Wet space: No  
Addition: No  
Conversion: No

21243 Barley Terrace Drive, Elkmont, Limestone County,  
Alabama, United States, 35620

9 Floor 1 - Bedroom



Max Dimensions: 11'4" x 10'3"  
Calculated Area: 116 sq. ft  
Included: Yes

Heated: Yes  
Finished: Yes  
Enclosed: Yes  
Contiguous: Yes  
Permitted: Yes  
Wet space: No  
Addition: No  
Conversion: No

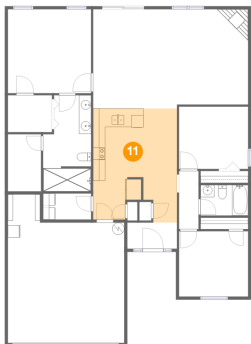
10 Floor 1 - Hall



Max Dimensions: 3'3" x 9'7"  
Calculated Area: 31 sq. ft  
Included: Yes

Heated: Yes  
Finished: Yes  
Enclosed: Yes  
Contiguous: Yes  
Permitted: Yes  
Wet space: No  
Addition: No  
Conversion: No

11 Floor 1 - Kitchen



Max Dimensions: 13'9" x 18'9"  
Calculated Area: 236 sq. ft  
Included: Yes

Heated: Yes  
Finished: Yes  
Enclosed: Yes  
Contiguous: Yes  
Permitted: Yes  
Wet space: No  
Addition: No  
Conversion: No

21243 Barley Terrace Drive, Elkmont, Limestone County,  
Alabama, United States, 35620

12 Floor 1 - Foyer



Max Dimensions: 8'2" x 4'4"  
Calculated Area: 35 sq. ft  
Included: Yes

Heated: Yes  
Finished: Yes  
Enclosed: Yes  
Contiguous: Yes  
Permitted: Yes  
Wet space: No  
Addition: No  
Conversion: No

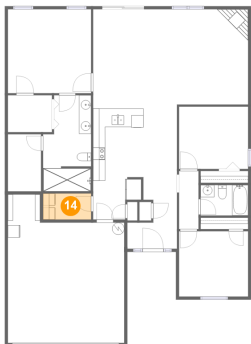
13 Floor 1 - Garage



Max Dimensions: 19'1" x 24'4"  
Calculated Area: 402 sq. ft  
Included: No

Heated: No  
Finished: No  
Enclosed: Yes  
Contiguous: Yes  
Permitted: Yes  
Wet space: No  
Addition: No  
Conversion: No

14 Floor 1 - Laundry



Max Dimensions: 7'11" x 4'3"  
Calculated Area: 34 sq. ft  
Included: Yes

Heated: Yes  
Finished: Yes  
Enclosed: Yes  
Contiguous: Yes  
Permitted: Yes  
Wet space: No  
Addition: No  
Conversion: No