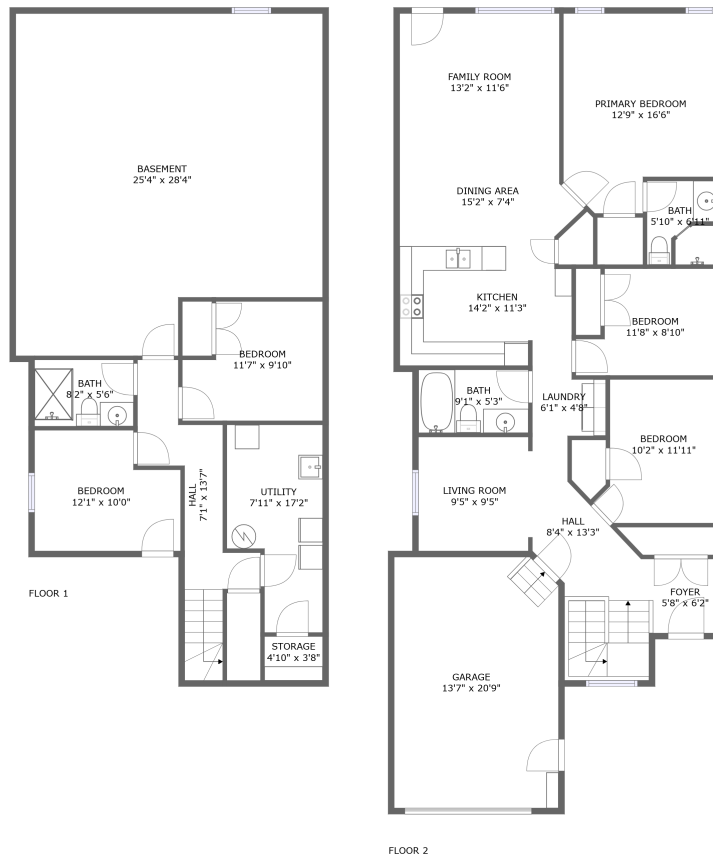



6 Rafton St, Newcastle, ON, CA



Property summary

 **1** Garages

 **5** Bedrooms

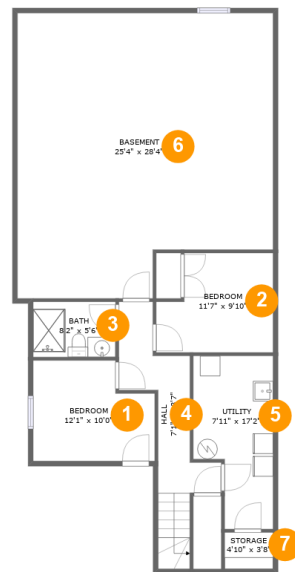
 **3** Bathrooms

 **0** Half baths

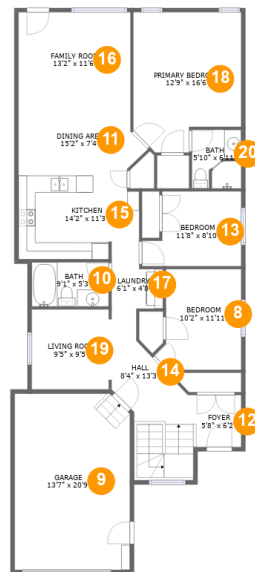
 **2** Floors

 **1,571** Gross living area sqft

 **2,951** Total sqft

6 Rafton St, Newcastle, ON, CA**Room dimensions****Floor 1****Total sqft: 1306 Living area: 297**

#		Dimensions	sqft	Counted as living area
1	Bedroom	12'1" x 10'0"	108 sq. ft	Yes
2	Bedroom	11'7" x 9'10"	101 sq. ft	Yes
3	Bath	8'2" x 5'6"	45 sq. ft	Yes
4	Hall	7'1" x 13'7"	107 sq. ft	No
5	Utility	7'11" x 17'2"	114 sq. ft	No
6	Basement	25'4" x 28'4"	661 sq. ft	No
7	Storage	4'10" x 3'8"	17 sq. ft	No

6 Rafton St, Newcastle, ON, CA**Room dimensions**

Floor 2

Total sqft: 1645 Living area: 1274

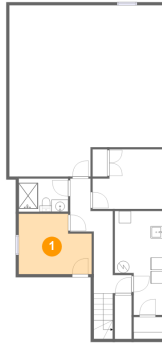
#		Dimensions	sqft	Counted as living area
8	Bedroom	10'2" x 11'11"	107 sq. ft	Yes
9	Garage	13'7" x 20'9"	279 sq. ft	No
10	Bath	9'1" x 5'3"	47 sq. ft	Yes
11	Dining Area	15'2" x 7'4"	101 sq. ft	Yes
12	Foyer	5'8" x 6'2"	35 sq. ft	Yes
13	Bedroom	11'8" x 8'10"	89 sq. ft	Yes
14	Hall	8'4" x 13'3"	121 sq. ft	Yes
15	Kitchen	14'2" x 11'3"	145 sq. ft	Yes
16	Family Room	13'2" x 11'6"	153 sq. ft	Yes
17	Laundry	6'1" x 4'8"	28 sq. ft	Yes
18	Primary Bedroom	12'9" x 16'6"	188 sq. ft	Yes

6 Rafton St, Newcastle, ON, CA

#		Dimensions	sqft	Counted as living area
19	Living Room	9'5" x 9'5"	88 sq. ft	Yes
20	Bath	5'10" x 6'11"	39 sq. ft	Yes

6 Rafton St, Newcastle, ON, CA

1 Floor 1 - Bedroom



Dimensions: 12'1" x 10'0"
Area: 108 sq. ft
Counted as living area: Yes

Heated: Yes
Finished: Yes
Enclosed: Yes
Contiguous: Yes
Permitted: Yes
Wet space: No
Addition: No
Conversion: No

2 Floor 1 - Bedroom



Dimensions: 11'7" x 9'10"
Area: 101 sq. ft
Counted as living area: Yes

Heated: Yes
Finished: Yes
Enclosed: Yes
Contiguous: Yes
Permitted: Yes
Wet space: No
Addition: No
Conversion: No

6 Rafton St, Newcastle, ON, CA

3 Floor 1 - Bath



Dimensions: 8'2" x 5'6"
Area: 45 sq. ft
Counted as living area: Yes

Heated: Yes
Finished: Yes
Enclosed: Yes
Contiguous: Yes
Permitted: Yes
Wet space: Yes
Addition: No
Conversion: No

4 Floor 1 - Hall



Dimensions: 7'1" x 13'7"
Area: 107 sq. ft
Counted as living area: No

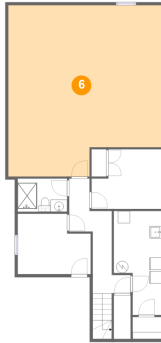
Heated: Yes
Finished: Yes
Enclosed: Yes
Contiguous: Yes
Permitted: Yes
Wet space: No
Addition: No
Conversion: No

5 Floor 1 - Utility



Dimensions: 7'11" x 17'2"
Area: 114 sq. ft
Counted as living area: No

Heated: Yes
Finished: No
Enclosed: Yes
Contiguous: Yes
Permitted: Yes
Wet space: No
Addition: No
Conversion: No

6 Rafton St, Newcastle, ON, CA**6 Floor 1 - Basement**

Dimensions: 25'4" x 28'4"
Area: 661 sq. ft
Counted as living area: No

Heated: Yes
Finished: No
Enclosed: Yes
Contiguous: Yes
Permitted: Yes
Wet space: No
Addition: No
Conversion: No

7 Floor 1 - Storage

Dimensions: 4'10" x 3'8"
Area: 17 sq. ft
Counted as living area: No

Heated: No
Finished: No
Enclosed: No
Contiguous: Yes
Permitted: Yes
Wet space: No
Addition: No
Conversion: No

8 Floor 2 - Bedroom

Dimensions: 10'2" x 11'11"
Area: 107 sq. ft
Counted as living area: Yes

Heated: Yes
Finished: Yes
Enclosed: Yes
Contiguous: Yes
Permitted: Yes
Wet space: No
Addition: No
Conversion: No

6 Rafton St, Newcastle, ON, CA

9 Floor 2 - Garage



Dimensions: 13'7" x 20'9"
Area: 279 sq. ft
Counted as living area: No

Heated: No
Finished: No
Enclosed: Yes
Contiguous: Yes
Permitted: Yes
Wet space: No
Addition: No
Conversion: No

10 Floor 2 - Bath



Dimensions: 9'1" x 5'3"
Area: 47 sq. ft
Counted as living area: Yes

Heated: Yes
Finished: Yes
Enclosed: Yes
Contiguous: Yes
Permitted: Yes
Wet space: Yes
Addition: No
Conversion: No

11 Floor 2 - Dining Area



Dimensions: 15'2" x 7'4"
Area: 101 sq. ft
Counted as living area: Yes

Heated: Yes
Finished: Yes
Enclosed: Yes
Contiguous: Yes
Permitted: Yes
Wet space: No
Addition: No
Conversion: No

6 Rafton St, Newcastle, ON, CA

12 Floor 2 - Foyer



Dimensions: 5'8" x 6'2"
Area: 35 sq. ft
Counted as living area: Yes

Heated: Yes
Finished: Yes
Enclosed: Yes
Contiguous: Yes
Permitted: Yes
Wet space: No
Addition: No
Conversion: No

13 Floor 2 - Bedroom



Dimensions: 11'8" x 8'10"
Area: 89 sq. ft
Counted as living area: Yes

Heated: Yes
Finished: Yes
Enclosed: Yes
Contiguous: Yes
Permitted: Yes
Wet space: No
Addition: No
Conversion: No

14 Floor 2 - Hall



Dimensions: 8'4" x 13'3"
Area: 121 sq. ft
Counted as living area: Yes

Heated: Yes
Finished: Yes
Enclosed: Yes
Contiguous: Yes
Permitted: Yes
Wet space: No
Addition: No
Conversion: No

6 Rafton St, Newcastle, ON, CA**15 Floor 2 - Kitchen**

Dimensions: 14'2" x 11'3"
Area: 145 sq. ft
Counted as living area: Yes

Heated: Yes
Finished: Yes
Enclosed: Yes
Contiguous: Yes
Permitted: Yes
Wet space: No
Addition: No
Conversion: No

16 Floor 2 - Family Room

Dimensions: 13'2" x 11'6"
Area: 153 sq. ft
Counted as living area: Yes

Heated: Yes
Finished: Yes
Enclosed: Yes
Contiguous: Yes
Permitted: Yes
Wet space: No
Addition: No
Conversion: No

17 Floor 2 - Laundry

Dimensions: 6'1" x 4'8"
Area: 28 sq. ft
Counted as living area: Yes

Heated: Yes
Finished: Yes
Enclosed: Yes
Contiguous: Yes
Permitted: Yes
Wet space: No
Addition: No
Conversion: No

6 Rafton St, Newcastle, ON, CA**18 Floor 2 - Primary Bedroom**

Dimensions: 12'9" x 16'6"
Area: 188 sq. ft
Counted as living area: Yes

Heated: Yes
Finished: Yes
Enclosed: Yes
Contiguous: Yes
Permitted: Yes
Wet space: No
Addition: No
Conversion: No

19 Floor 2 - Living Room

Dimensions: 9'5" x 9'5"
Area: 88 sq. ft
Counted as living area: Yes

Heated: Yes
Finished: Yes
Enclosed: Yes
Contiguous: Yes
Permitted: Yes
Wet space: No
Addition: No
Conversion: No

20 Floor 2 - Bath

Dimensions: 5'10" x 6'11"
Area: 39 sq. ft
Counted as living area: Yes

Heated: Yes
Finished: Yes
Enclosed: Yes
Contiguous: Yes
Permitted: Yes
Wet space: Yes
Addition: No
Conversion: No