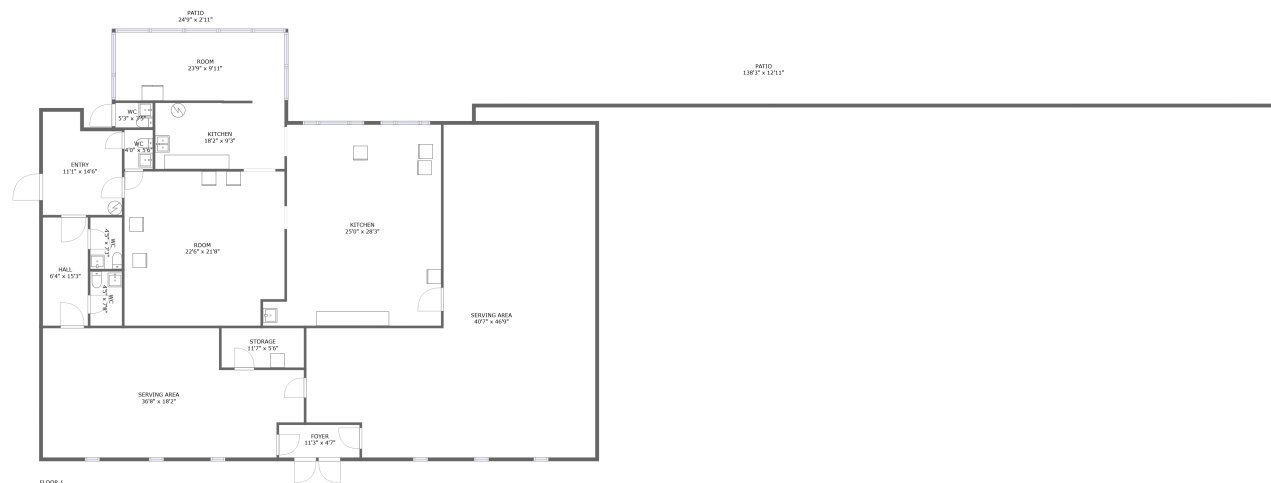


Home report

101 Shelton Street, Gretna, Pittsylvania County, Virginia, United States, 24557



Property summary

 **0** Garages

 **0** Bedrooms

 **0** Bathrooms

 **4** Half baths

 **1** Floors

 **3,827** Gross living area sqft

 **5,670** Total sqft

Home report

101 Shelton Street, Gretna, Pittsylvania County, Virginia, United States, 24557



Room dimensions

Floor 1

Total sqft: 5670

Living area: 3827

#		Max Dimensions	sqft	Included
1	Patio	24'9" x 2'11"	72 sq. ft	No
2	Serving Area	36'8" x 18'2"	578 sq. ft	Yes
3	Storage	11'7" x 5'6"	64 sq. ft	No
4	Room	22'6" x 21'8"	475 sq. ft	Yes
5	WC	4'5" x 7'8"	34 sq. ft	Yes
6	Entry	11'1" x 14'6"	145 sq. ft	Yes
7	Serving Area	40'7" x 46'9"	1309 sq. ft	Yes
8	Kitchen	18'2" x 9'3"	168 sq. ft	No
9	WC	4'5" x 7'3"	32 sq. ft	Yes
10	WC	5'3" x 3'5"	18 sq. ft	No
11	WC	4'0" x 5'6"	22 sq. ft	Yes

Home report

101 Shelton Street, Gretna, Pittsylvania County, Virginia, United States, 24557

#		Max Dimensions	sqft	Included
12	Foyer	11'3" x 4'7"	52 sq. ft	Yes
13	Room	23'9" x 9'11"	229 sq. ft	Yes
14	Patio	138'3" x 12'11"	1519 sq. ft	No
15	Hall	6'4" x 15'3"	96 sq. ft	Yes
16	Kitchen	25'0" x 28'3"	623 sq. ft	Yes

1 Floor 1 - Patio



Max Dimensions: 24'9" x 2'11"
Calculated Area: 72 sq. ft
Included: No

Heated: No
Finished: Yes
Enclosed: No
Contiguous: Yes
Permitted: Yes
Wet space: No
Addition: No
Conversion: No

2 Floor 1 - Serving Area



Max Dimensions: 36'8" x 18'2"
Calculated Area: 578 sq. ft
Included: Yes

Heated: Yes
Finished: Yes
Enclosed: Yes
Contiguous: Yes
Permitted: Yes
Wet space: No
Addition: No
Conversion: No

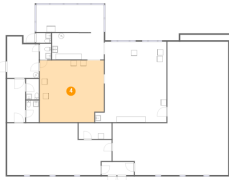
3 Floor 1 - Storage



Max Dimensions: 11'7" x 5'6"
Calculated Area: 64 sq. ft
Included: No

Heated: No
Finished: No
Enclosed: No
Contiguous: Yes
Permitted: Yes
Wet space: No
Addition: No
Conversion: No

4 Floor 1 - Room



Max Dimensions: 22'6" x 21'8"
Calculated Area: 475 sq. ft
Included: Yes

Heated: Yes
Finished: Yes
Enclosed: Yes
Contiguous: Yes
Permitted: Yes
Wet space: No
Addition: No
Conversion: No

5 Floor 1 - WC



Max Dimensions: 4'5" x 7'8"
Calculated Area: 34 sq. ft
Included: Yes

Heated: Yes
Finished: Yes
Enclosed: Yes
Contiguous: Yes
Permitted: Yes
Wet space: Yes
Addition: No
Conversion: No

6 Floor 1 - Entry



Max Dimensions: 11'1" x 14'6"
Calculated Area: 145 sq. ft
Included: Yes

Heated: Yes
Finished: Yes
Enclosed: Yes
Contiguous: Yes
Permitted: Yes
Wet space: No
Addition: No
Conversion: No

7 Floor 1 - Serving Area



Max Dimensions: 40'7" x 46'9"
Calculated Area: 1309 sq. ft
Included: Yes

Heated: Yes
Finished: Yes
Enclosed: Yes
Contiguous: Yes
Permitted: Yes
Wet space: No
Addition: No
Conversion: No

8 Floor 1 - Kitchen



Max Dimensions: 18'2" x 9'3"
Calculated Area: 168 sq. ft
Included: No

Heated: Yes
Finished: Yes
Enclosed: Yes
Contiguous: Yes
Permitted: Yes
Wet space: No
Addition: No
Conversion: No

9 Floor 1 - WC



Max Dimensions: 4'5" x 7'3"
Calculated Area: 32 sq. ft
Included: Yes

Heated: Yes
Finished: Yes
Enclosed: Yes
Contiguous: Yes
Permitted: Yes
Wet space: Yes
Addition: No
Conversion: No

10 Floor 1 - WC



Max Dimensions: 5'3" x 3'5"
Calculated Area: 18 sq. ft
Included: No

Heated: Yes
Finished: Yes
Enclosed: Yes
Contiguous: No
Permitted: Yes
Wet space: No
Addition: No
Conversion: No

11 Floor 1 - WC



Max Dimensions: 4'0" x 5'6"
Calculated Area: 22 sq. ft
Included: Yes

Heated: Yes
Finished: Yes
Enclosed: Yes
Contiguous: Yes
Permitted: Yes
Wet space: No
Addition: No
Conversion: No

12 Floor 1 - Foyer



Max Dimensions: 11'3" x 4'7"
Calculated Area: 52 sq. ft
Included: Yes

Heated: Yes
Finished: Yes
Enclosed: Yes
Contiguous: Yes
Permitted: Yes
Wet space: No
Addition: No
Conversion: No

13 Floor 1 - Room



Max Dimensions: 23'9" x 9'11"
Calculated Area: 229 sq. ft
Included: Yes

Heated: Yes
Finished: Yes
Enclosed: Yes
Contiguous: Yes
Permitted: Yes
Wet space: No
Addition: No
Conversion: No

14 Floor 1 - Patio



Max Dimensions: 138'3" x 12'11"
Calculated Area: 1519 sq. ft
Included: No

Heated: No
Finished: Yes
Enclosed: No
Contiguous: Yes
Permitted: Yes
Wet space: No
Addition: No
Conversion: No

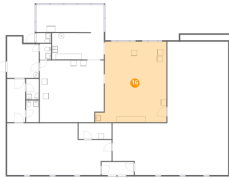
15 Floor 1 - Hall



Max Dimensions: 6'4" x 15'3"
Calculated Area: 96 sq. ft
Included: Yes

Heated: Yes
Finished: Yes
Enclosed: Yes
Contiguous: Yes
Permitted: Yes
Wet space: No
Addition: No
Conversion: No

16 Floor 1 - Kitchen



Max Dimensions: 25'0" x 28'3"
Calculated Area: 623 sq. ft
Included: Yes

Heated: Yes
Finished: Yes
Enclosed: Yes
Contiguous: Yes
Permitted: Yes
Wet space: No
Addition: No
Conversion: No