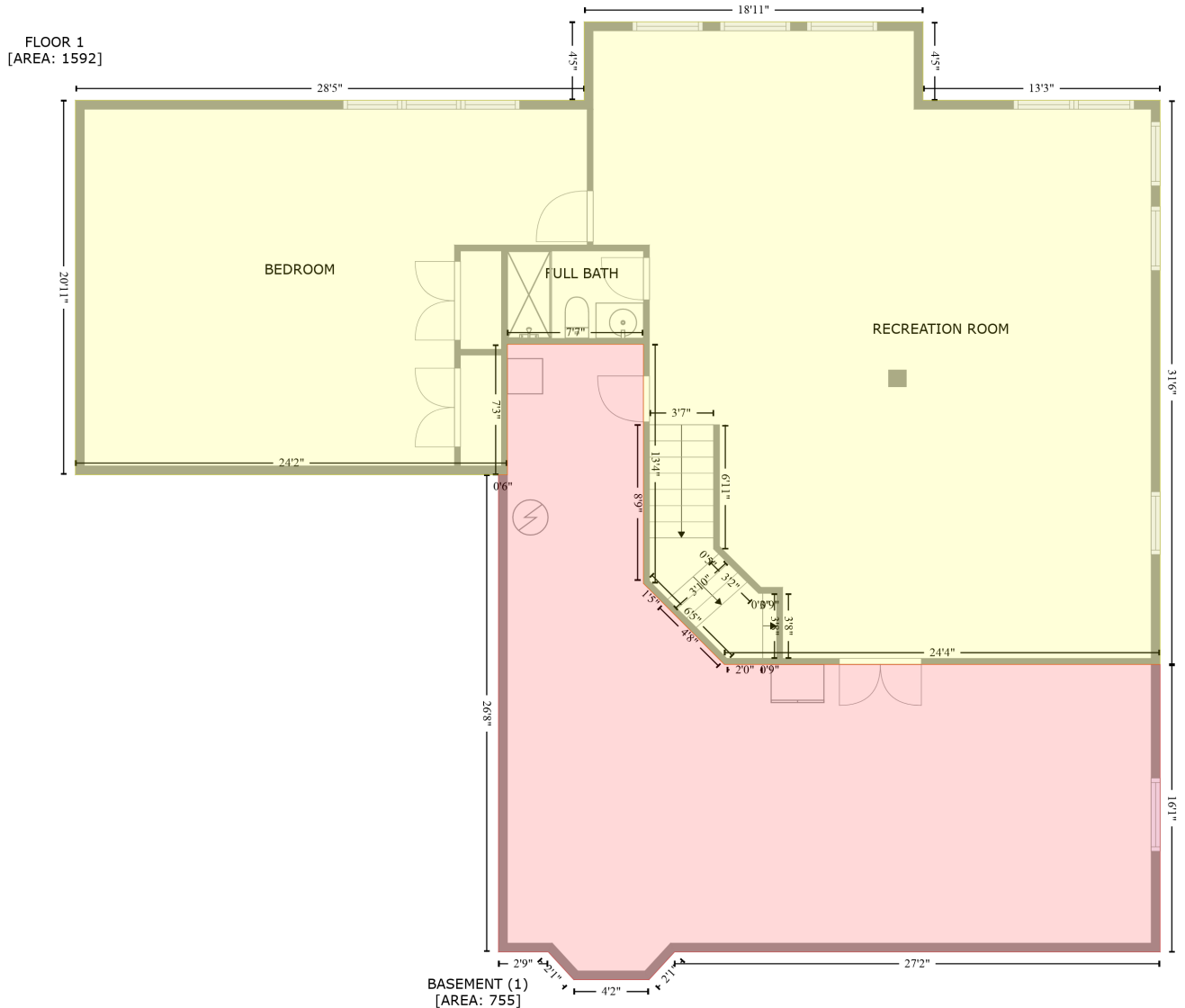


124 River Edge Rd., Brandenburg, KY, US

Gross Living Area: 3505 sq. ft



Space	Area (sq. ft)	Calculation <small>Coordinate Polygon Area Algorithm using inches</small>
FLOOR 1 (Living area)	1592	$-\left((591.4 + 591.4) * (13.3 - 65.9) + (591.4 + 750.5) * (65.9 - 65.9) + (750.5 + 750.5) * (65.9 - 444.1) + (750.5 + 458.2) * (444.1 - 444.1) + (458.2 + 403.9) * (444.1 - 389.8) + (403.9 + 403.9) * (389.8 - 229.5) + (403.9 + 312.6) * (229.5 - 229.5) + (312.6 + 312.6) * (229.5 - 317) + (312.6 + 22.7) * (317 - 317) + (22.7 + 22.7) * (317 - 65.9) + (22.7 + 364.1) * (65.9 - 65.9) + (364.1 + 364.1) * (65.9 - 13.3) + (364.1 + 591.4) * (13.3 - 13.3) \right) * 0.5 * 0.00694$
BASEMENT (Non-living area)	755	$-\left((403.9 + 403.9) * (229.5 - 389.8) + (403.9 + 458.2) * (389.8 - 444.1) + (458.2 + 750.5) * (444.1 - 444.1) + (750.5 + 750.5) * (444.1 - 637) + (750.5 + 424.7) * (637 - 637) + (424.7 + 407.5) * (637 - 655.6) + (407.5 + 357.2) * (655.6 - 655.6) + (357.2 + 340) * (655.6 - 637) + (340 + 306.6) * (637 - 637) + (306.6 + 306.6) * (637 - 317) + (306.6 + 312.6) * (317 - 317) + (312.6 + 312.6) * (317 - 317) \right) * 0.5 * 0.00694$

124 River Edge Rd., Brandenburg, KY, US

Gross Living Area: 3505 sq. ft

Space	Area (sq. ft)	Calculation <small>Coordinate Polygon Area Algorithm using inches</small>
		$229.5 + (312.6 + 403.9) * (229.5 - 229.5) * 0.5 * 0.00694$

124 River Edge Rd., Brandenburg, KY, US

Gross Living Area: 3505 sq. ft



Space	Area (sq. ft)	Calculation
FLOOR 2 (Living area)	2436	Coordinate Polygon Area Algorithm using inches $-((591.4 + 591.4) * (13.3 - 58.2) + (591.4 + 750.5) * (58.2 - 58.2) + (750.5 + 750.5) * (58.2 - 637) + (750.5 + 431.8) * (637 - 637) + (431.8 + 431.8) * (637 - 646.8) + (431.8 + 409.4) * (646.8 - 666.5) + (409.4 + 356.7) * (666.5 - 666.5) + (356.7 + 334.3) * (666.5 - 646.8) + (334.3 + 334.3) * (646.8 - 637) + (334.3 + 312.6) * (637 - 637) + (312.6 + 312.6) * (637 - 631) + (312.6 + 306.6) * (631 - 631) + (306.6 + 306.6) * (631 - 330.7) + (306.6 + 10.6) * (330.7 - 330.7) + (10.6 + 10.6) * (330.7 - 58.2) + (10.6 + 349.9) * (58.2 - 58.2) + (349.9 + 349.9) * (58.2 - 13.3) + (349.9 + 591.4) * (13.3 - 13.3)) * 0.5 * 0.00694$

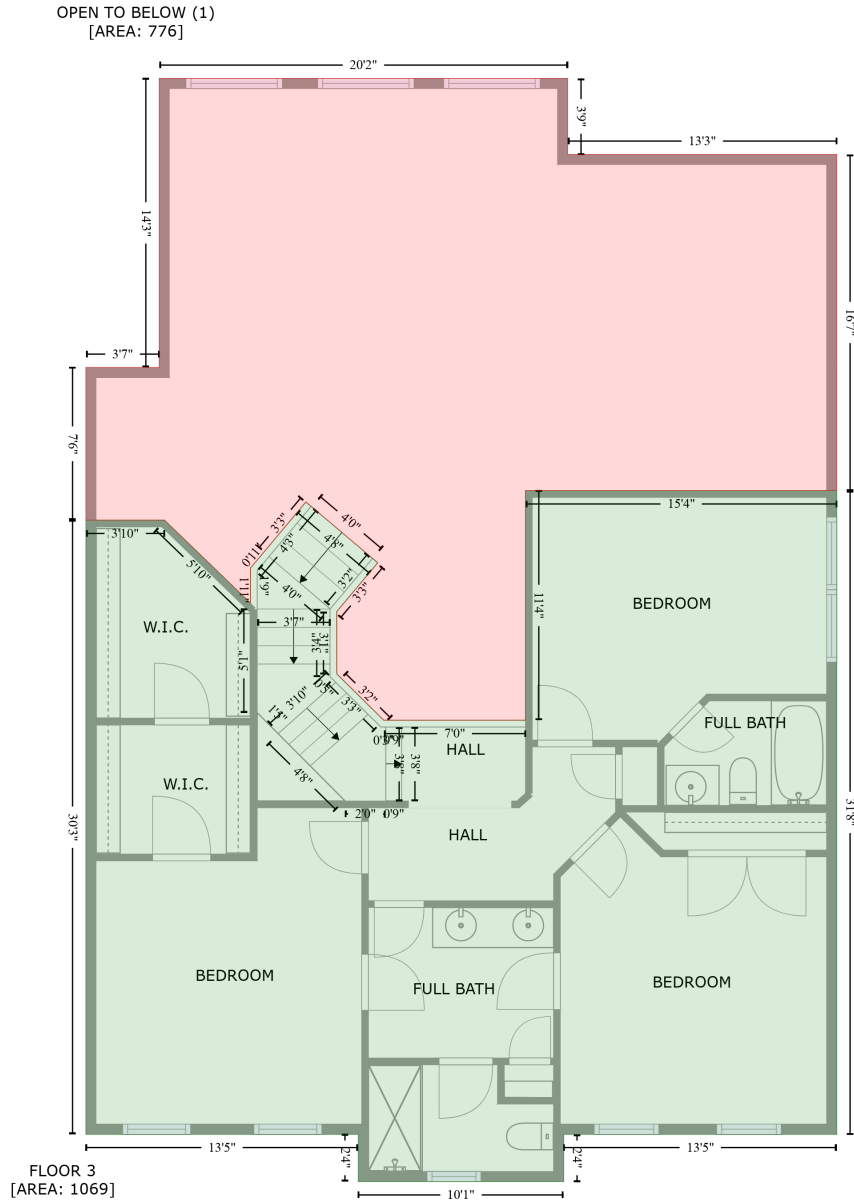
124 River Edge Rd., Brandenburg, KY, US

Gross Living Area: 3505 sq. ft

Space	Area (sq. ft)	Calculation <small>Coordinate Polygon Area Algorithm using inches</small>
GARAGE (Non-living area)	798	$-\left(\left(306.6 + 306.6\right) * \left(330.7 - 631\right) + \left(306.6 + 312.6\right) * \left(631 - 631\right) + \left(312.6 + 312.6\right) * \left(631 - 717\right) + \left(312.6 + 10.6\right) * \left(717 - 717\right) + \left(10.6 + 10.6\right) * \left(717 - 330.7\right) + \left(10.6 + 306.6\right) * \left(330.7 - 330.7\right)\right) * 0.5 * 0.00694$

124 River Edge Rd., Brandenburg, KY, US

Gross Living Area: 3505 sq. ft



Space	Area (sq. ft)	Calculation
FLOOR 3 (Living area)	1069	Coordinate Polygon Area Algorithm using inches $-((750.5 + 750.5) * (233.7 - 613.9) + (750.5 + 589.1) * (613.9 - 613.9) + (589.1 + 589.1) * (613.9 - 641.8) + (589.1 + 467.6) * (641.8 - 641.8) + (467.6 + 467.6) * (641.8 - 613.9) + (467.6 + 306.6) * (613.9 - 613.9) + (306.6 + 306.6) * (613.9 - 251.1) + (306.6 + 353.1) * (251.1 - 251.1) + (353.1 + 403.9) * (251.1 - 300) + (403.9 + 403.9) * (300 - 279.5) + (403.9 + 436.6) * (279.5 - 240.4) + (436.6 + 479.1) * (240.4 - 276.3) + (479.1 + 454.9) * (276.3 - 305.1) + (454.9 + 454.9) * (305.1 - 341.9) + (454.9 + 482.7) * (341.9 - 369.3) + (482.7 + 566.5) * (369.3 - 369.3) + (566.5 + 566.5) * (369.3 - 233.7) + (566.5 + 750.5) * (233.7 - 233.7)) * 0.5 * 0.00694$

124 River Edge Rd.,Brandenburg,KY,US

Gross Living Area: 3505 sq. ft

Space	Area (sq. ft)	Calculation <small>Coordinate Polygon Area Algorithm using inches</small>
OPEN TO BELOW (Non-living area)	776	$\begin{aligned} & -((591.4 + 591.4) * (-9.8 - 35.1) + (591.4 + 750.5) * (35.1 - 35.1) + (750.5 + 750.5) * (35.1 - 233.7) \\ & + (750.5 + 566.5) * (233.7 - 233.7) + (566.5 + 566.5) * (233.7 - 369.3) + (566.5 + 482.7) * (369.3 - \\ & 369.3) + (482.7 + 454.9) * (369.3 - 341.9) + (454.9 + 454.9) * (341.9 - 305.1) + (454.9 + 479.1) * \\ & (305.1 - 276.3) + (479.1 + 436.6) * (276.3 - 240.4) + (436.6 + 403.9) * (240.4 - 279.5) + (403.9 + \\ & 403.9) * (279.5 - 300) + (403.9 + 353.1) * (300 - 251.1) + (353.1 + 306.6) * (251.1 - 251.1) + \\ & (306.6 + 306.6) * (251.1 - 160.9) + (306.6 + 349.9) * (160.9 - 160.9) + (349.9 + 349.9) * (160.9 - \\ & -9.8) + (349.9 + 591.4) * (-9.8 - -9.8)) * 0.5 * 0.00694 \end{aligned}$