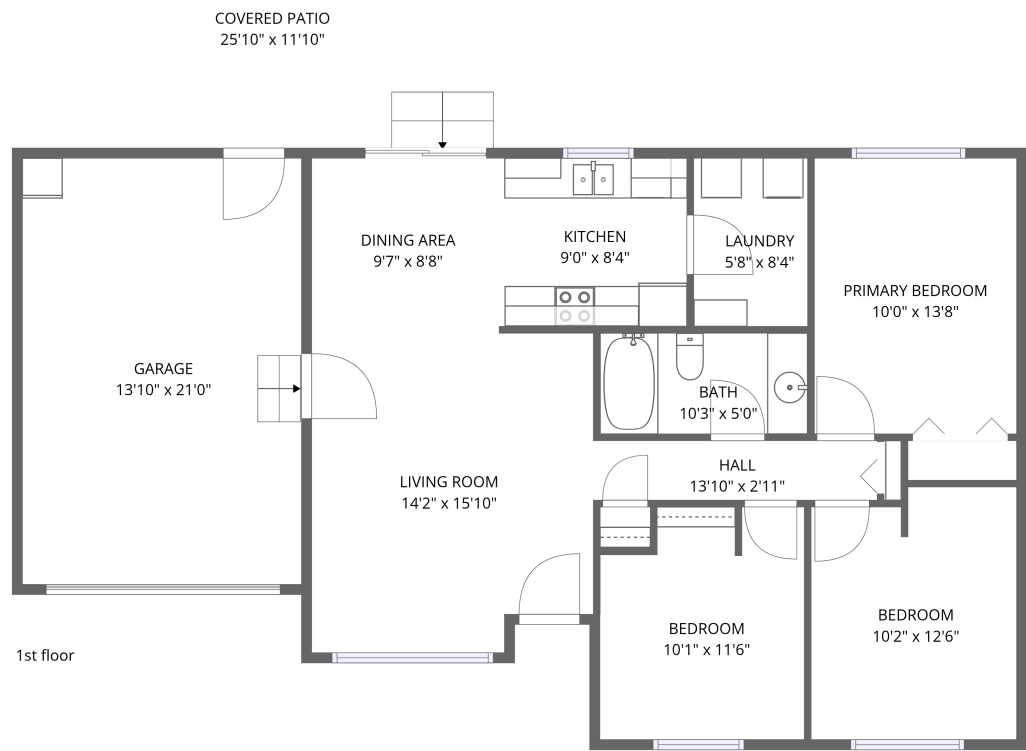


Home data report

315 Columbia Loop Rd,Roseburg,OR,US




Total Area: 933 sq. ft


1st Floor: 933 sq. ft

Excluded: Garage 291 sq. ft, Covered patio 307 sq. ft, Walls: 91 sq. ft

Property summary

 **1** Floors

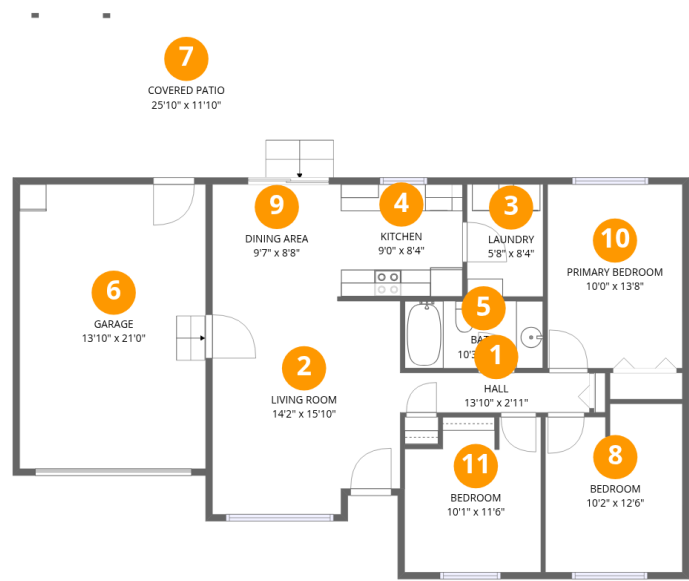
 **3** Bedrooms

 **1** Bathrooms

 **1** Garages

Home data report

315 Columbia Loop Rd,Roseburg,OR,US

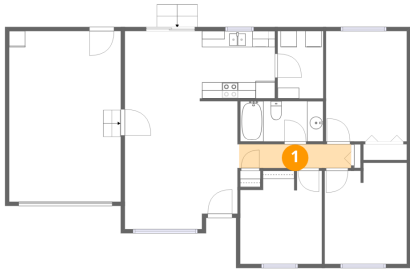


Room dimensions

Floor 1 Total:933sqft Excluded: 598sqft

#		Dimensions	sqft	Counted as living area
1	Hall	13'10" x 2'11"	41 sq. ft	Yes
2	Living Room	14'2" x 15'10"	212 sq. ft	Yes
3	Laundry	5'8" x 8'4"	47 sq. ft	Yes
4	Kitchen	9'0" x 8'4"	75 sq. ft	Yes
5	Bath	10'3" x 5'0"	51 sq. ft	Yes
6	Garage	13'10" x 21'0"	291 sq. ft	No
7	Covered Patio	25'10" x 11'10"	307 sq. ft	No
8	Bedroom	10'2" x 12'6"	122 sq. ft	Yes
9	Dining Area	9'7" x 8'8"	83 sq. ft	Yes
10	Primary Bedroom	10'0" x 13'8"	136 sq. ft	Yes
11	Bedroom	10'1" x 11'6"	109 sq. ft	Yes

1 Floor 1 - Hall



Dimensions: 13'10" x 2'11"
Area: 41 sq. ft
Counted as living area: Yes

Heated: Yes
Finished: Yes
Enclosed: Yes
Contiguous: Yes
Permitted: Yes
Wet space: No
Addition: No
Conversion: No

2 Floor 1 - Living Room



Dimensions: 14'2" x 15'10"
Area: 212 sq. ft
Counted as living area: Yes

Heated: Yes
Finished: Yes
Enclosed: Yes
Contiguous: Yes
Permitted: Yes
Wet space: No
Addition: No
Conversion: No

3 Floor 1 - Laundry



Dimensions: 5'8" x 8'4"
Area: 47 sq. ft
Counted as living area: Yes

Heated: Yes
Finished: Yes
Enclosed: Yes
Contiguous: Yes
Permitted: Yes
Wet space: No
Addition: No
Conversion: No

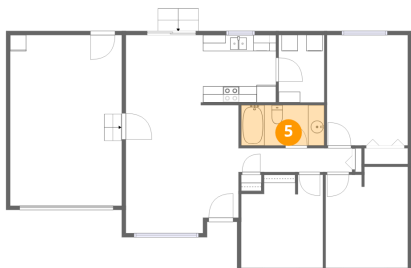
4 Floor 1 - Kitchen



Dimensions: 9'0" x 8'4"
Area: 75 sq. ft
Counted as living area: Yes

Heated: Yes
Finished: Yes
Enclosed: Yes
Contiguous: Yes
Permitted: Yes
Wet space: No
Addition: No
Conversion: No

5 Floor 1 - Bath



Dimensions: 10'3" x 5'0"
Area: 51 sq. ft
Counted as living area: Yes

Heated: Yes
Finished: Yes
Enclosed: Yes
Contiguous: Yes
Permitted: Yes
Wet space: Yes
Addition: No
Conversion: No

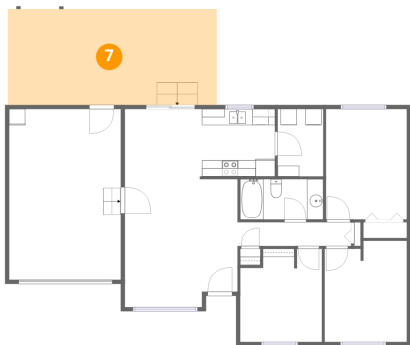
6 Floor 1 - Garage



Dimensions: 13'10" x 21'0"
Area: 291 sq. ft
Counted as living area: No

Heated: No
Finished: No
Enclosed: Yes
Contiguous: Yes
Permitted: Yes
Wet space: No
Addition: No
Conversion: No

7 Floor 1 - Covered Patio



Dimensions: 25'10" x 11'10"
Area: 307 sq. ft
Counted as living area: No

Heated: No
Finished: No
Enclosed: No
Contiguous: Yes
Permitted: Yes
Wet space: No
Addition: No
Conversion: No

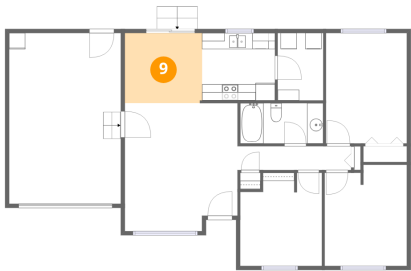
8 Floor 1 - Bedroom



Dimensions: 10'2" x 12'6"
Area: 122 sq. ft
Counted as living area: Yes

Heated: Yes
Finished: Yes
Enclosed: Yes
Contiguous: Yes
Permitted: Yes
Wet space: No
Addition: No
Conversion: No

9 Floor 1 - Dining Area



Dimensions: 9'7" x 8'8"
Area: 83 sq. ft
Counted as living area: Yes

Heated: Yes
Finished: Yes
Enclosed: Yes
Contiguous: Yes
Permitted: Yes
Wet space: No
Addition: No
Conversion: No

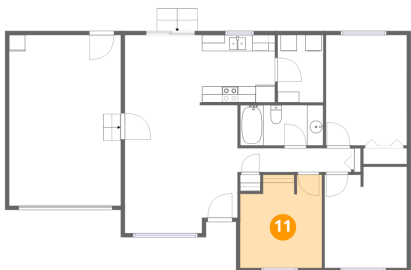
10 Floor 1 - Primary Bedroom



Dimensions: 10'0" x 13'8"
Area: 136 sq. ft
Counted as living area: Yes

Heated: Yes
Finished: Yes
Enclosed: Yes
Contiguous: Yes
Permitted: Yes
Wet space: No
Addition: No
Conversion: No

11 Floor 1 - Bedroom



Dimensions: 10'1" x 11'6"
Area: 109 sq. ft
Counted as living area: Yes

Heated: Yes
Finished: Yes
Enclosed: Yes
Contiguous: Yes
Permitted: Yes
Wet space: No
Addition: No
Conversion: No