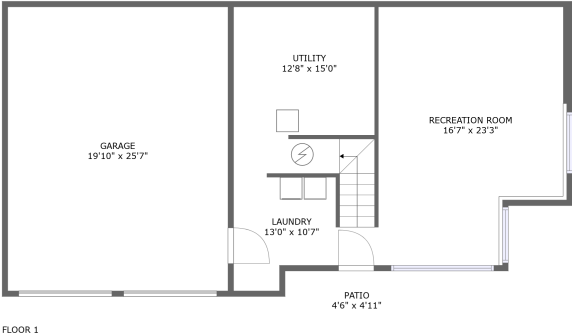
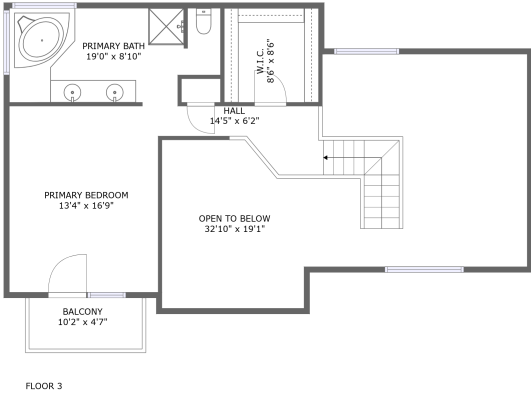
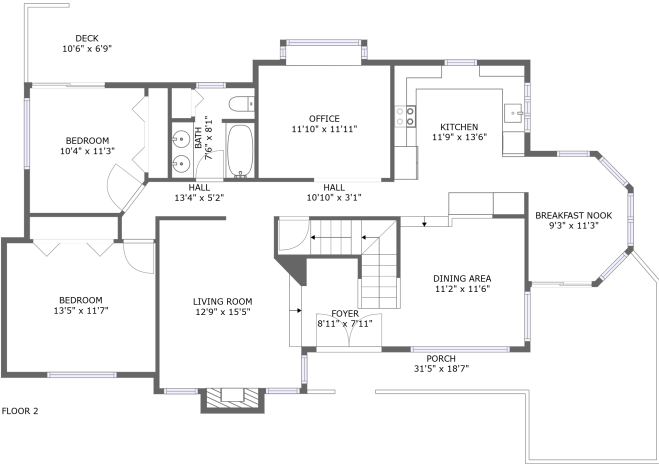


Home report

27336 Mountain Park Road, Evergreen, Jefferson County, Colorado, United States, 80439




Total Area: 2344 sq. ft

Below Ground: 467 sq. ft, Floor 2: 1293 sq. ft, Floor 3: 584 sq. ft

Excluded: Garage 506 sq. ft, Utility 205 sq. ft, Patio 22 sq. ft, Porch 255 sq. ft, Deck 71 sq. ft, Fireplace 10 sq. ft, Balcony 47 sq. ft, Open to below 502 sq. ft, Walls: 248 sq. ft

Property summary

3 Floors

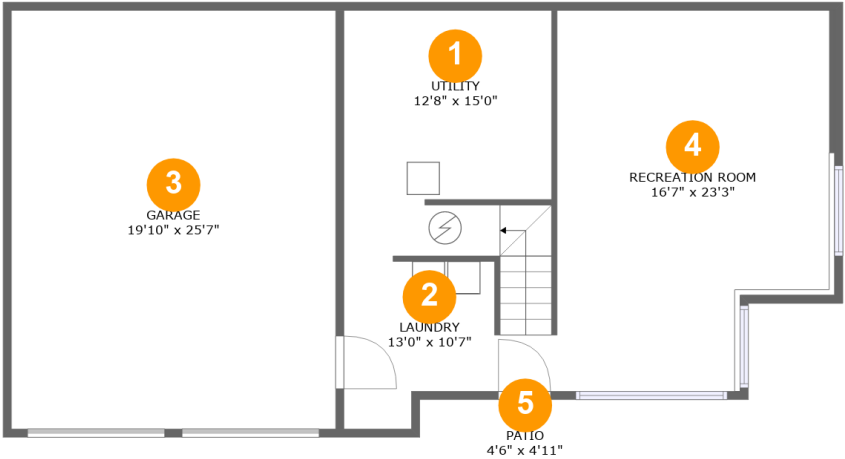
3 Bedrooms

2 Bathrooms

1 Garages

Home report

27336 Mountain Park Road, Evergreen, Jefferson County,
Colorado, United States, 80439



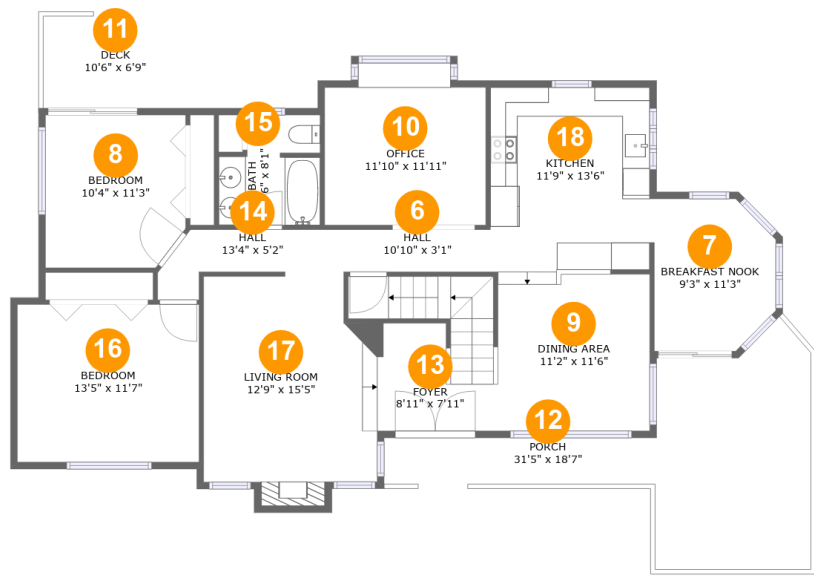
Room dimensions

Floor 1 Below ground Total:467sqft Excluded: 733sqft

| # | | Max Dimensions | sqft | Included |
|---|-----------------|----------------|------------|----------|
| 1 | Utility | 12'8" x 15'0" | 203 sq. ft | No |
| 2 | Laundry | 13'0" x 10'7" | 100 sq. ft | Yes |
| 3 | Garage | 19'10" x 25'7" | 506 sq. ft | No |
| 4 | Recreation Room | 16'7" x 23'3" | 360 sq. ft | Yes |
| 5 | Patio | 4'6" x 4'11" | 22 sq. ft | No |

Home report

27336 Mountain Park Road, Evergreen, Jefferson County, Colorado, United States, 80439



Room dimensions

Floor 2 Total:1293sqft Excluded: 336sqft

| # | | Max Dimensions | sqft | Included |
|----|----------------|-----------------|------------|----------|
| 6 | Hall | 10'10" x 3'1" | 34 sq. ft | Yes |
| 7 | Breakfast Nook | 9'3" x 11'3" | 93 sq. ft | Yes |
| 8 | Bedroom | 10'4" x 11'3" | 113 sq. ft | Yes |
| 9 | Dining Area | 11'2" x 11'6" | 130 sq. ft | Yes |
| 10 | Office | 11'10" x 11'11" | 133 sq. ft | Yes |
| 11 | Deck | 10'6" x 6'9" | 71 sq. ft | No |
| 12 | Porch | 31'5" x 18'7" | 255 sq. ft | No |
| 13 | Foyer | 8'11" x 7'11" | 117 sq. ft | Yes |
| 14 | Hall | 13'4" x 5'2" | 45 sq. ft | Yes |
| 15 | Bath | 7'6" x 8'1" | 53 sq. ft | Yes |
| 16 | Bedroom | 13'5" x 11'7" | 155 sq. ft | Yes |

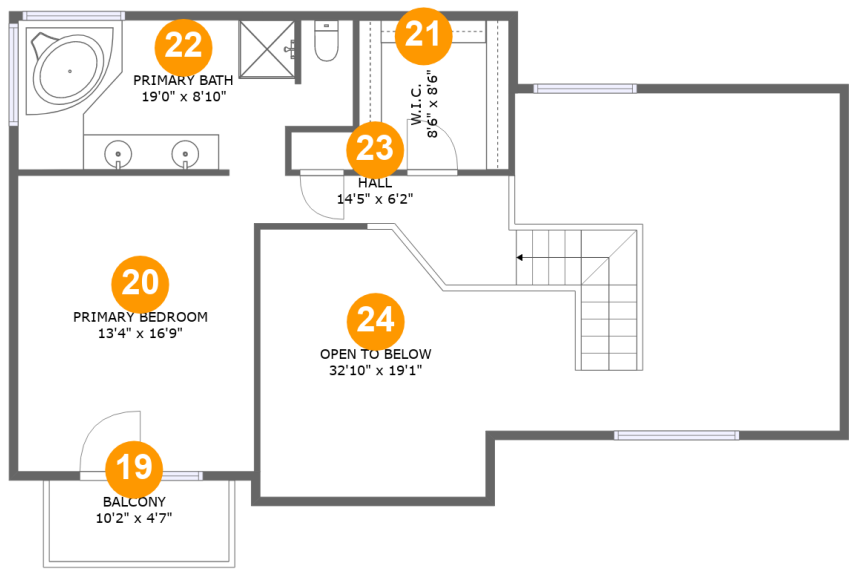
Home report

27336 Mountain Park Road, Evergreen, Jefferson County,
Colorado, United States, 80439

| # | | Max Dimensions | sqft | Included |
|----|-------------|----------------|------------|----------|
| 17 | Living Room | 12'9" x 15'5" | 192 sq. ft | Yes |
| 18 | Kitchen | 11'9" x 13'6" | 159 sq. ft | Yes |

Home report

27336 Mountain Park Road, Evergreen, Jefferson County,
Colorado, United States, 80439



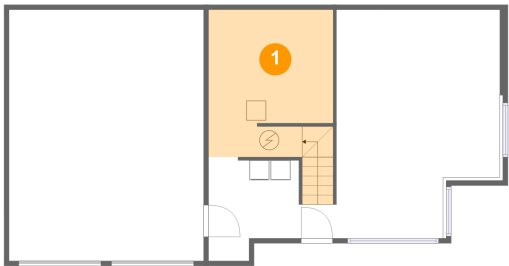
Room dimensions

Floor 3 Total:584sqft Excluded: 549sqft

| # | | Max Dimensions | sqft | Included |
|----|-----------------|----------------|------------|----------|
| 19 | Balcony | 10'2" x 4'7" | 47 sq. ft | No |
| 20 | Primary Bedroom | 13'4" x 16'9" | 224 sq. ft | Yes |
| 21 | W.I.C. | 8'6" x 8'6" | 72 sq. ft | Yes |
| 22 | Primary Bath | 19'0" x 8'10" | 151 sq. ft | Yes |
| 23 | Hall | 14'5" x 6'2" | 107 sq. ft | Yes |
| 24 | Open To Below | 32'10" x 19'1" | 502 sq. ft | No |

27336 Mountain Park Road, Evergreen, Jefferson County,
Colorado, United States, 80439

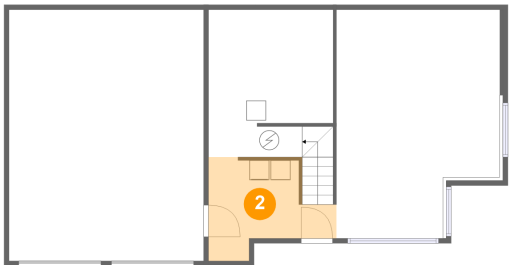
1 Floor 1 - Utility



Max Dimensions: 12'8" x 15'0"
Calculated Area: 203 sq. ft
Included: No

Heated: Yes
Finished: No
Enclosed: Yes
Contiguous: Yes
Permitted: Yes
Wet space: No
Addition: No
Conversion: No

2 Floor 1 - Laundry



Max Dimensions: 13'0" x 10'7"
Calculated Area: 100 sq. ft
Included: No

Heated: Yes
Finished: Yes
Enclosed: Yes
Contiguous: No
Permitted: Yes
Wet space: No
Addition: No
Conversion: No

27336 Mountain Park Road, Evergreen, Jefferson County,
Colorado, United States, 80439

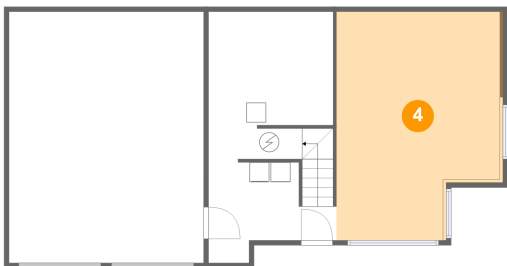
3 Floor 1 - Garage



Max Dimensions: 19'10" x 25'7"
Calculated Area: 506 sq. ft
Included: No

Heated: No
Finished: No
Enclosed: Yes
Contiguous: Yes
Permitted: Yes
Wet space: No
Addition: No
Conversion: No

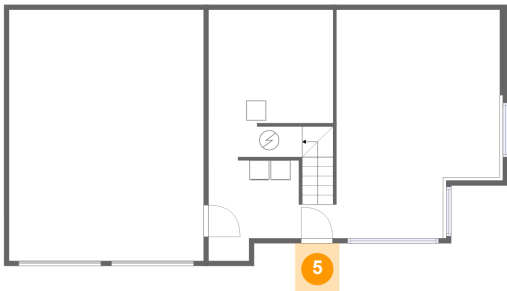
4 Floor 1 - Recreation Room



Max Dimensions: 16'7" x 23'3"
Calculated Area: 360 sq. ft
Included: No

Heated: Yes
Finished: Yes
Enclosed: Yes
Contiguous: No
Permitted: Yes
Wet space: No
Addition: No
Conversion: No

5 Floor 1 - Patio

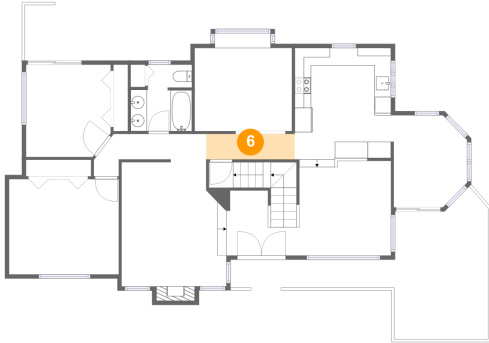


Max Dimensions: 4'6" x 4'11"
Calculated Area: 22 sq. ft
Included: No

Heated: No
Finished: Yes
Enclosed: No
Contiguous: Yes
Permitted: Yes
Wet space: No
Addition: No
Conversion: No

27336 Mountain Park Road, Evergreen, Jefferson County,
Colorado, United States, 80439

6 Floor 2 - Hall



Max Dimensions: 10'10" x 3'1"
Calculated Area: 34 sq. ft
Included: Yes

Heated: Yes
Finished: Yes
Enclosed: Yes
Contiguous: Yes
Permitted: Yes
Wet space: No
Addition: No
Conversion: No

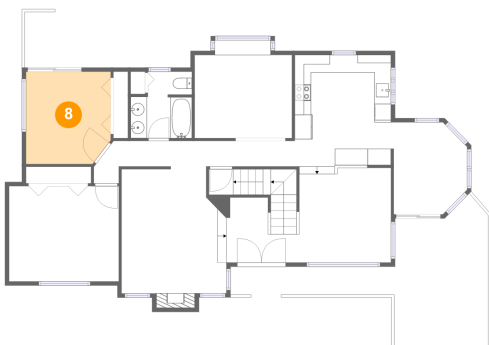
7 Floor 2 - Breakfast Nook



Max Dimensions: 9'3" x 11'3"
Calculated Area: 93 sq. ft
Included: Yes

Heated: Yes
Finished: Yes
Enclosed: Yes
Contiguous: Yes
Permitted: Yes
Wet space: No
Addition: No
Conversion: No

8 Floor 2 - Bedroom

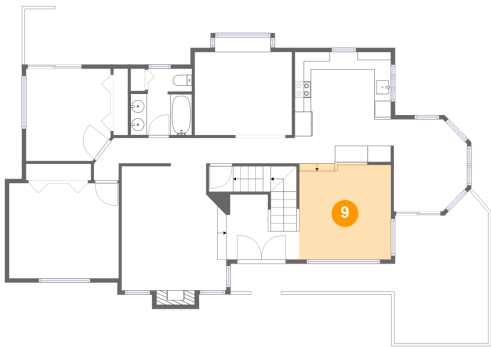


Max Dimensions: 10'4" x 11'3"
Calculated Area: 113 sq. ft
Included: Yes

Heated: Yes
Finished: Yes
Enclosed: Yes
Contiguous: Yes
Permitted: Yes
Wet space: No
Addition: No
Conversion: No

27336 Mountain Park Road, Evergreen, Jefferson County,
Colorado, United States, 80439

9 Floor 2 - Dining Area



Max Dimensions: 11'2" x 11'6"
Calculated Area: 130 sq. ft
Included: Yes

Heated: Yes
Finished: Yes
Enclosed: Yes
Contiguous: Yes
Permitted: Yes
Wet space: No
Addition: No
Conversion: No

10 Floor 2 - Office



Max Dimensions: 11'10" x 11'11"
Calculated Area: 133 sq. ft
Included: Yes

Heated: Yes
Finished: Yes
Enclosed: Yes
Contiguous: Yes
Permitted: Yes
Wet space: No
Addition: No
Conversion: No

11 Floor 2 - Deck

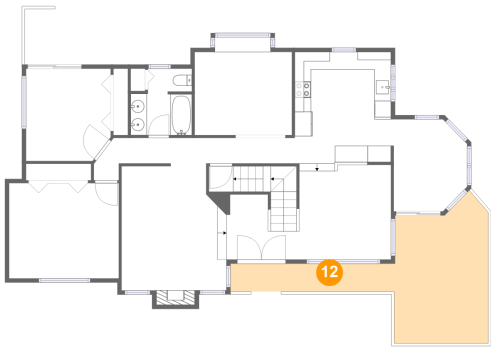


Max Dimensions: 10'6" x 6'9"
Calculated Area: 71 sq. ft
Included: No

Heated: No
Finished: Yes
Enclosed: No
Contiguous: Yes
Permitted: Yes
Wet space: No
Addition: No
Conversion: No

27336 Mountain Park Road, Evergreen, Jefferson County,
Colorado, United States, 80439

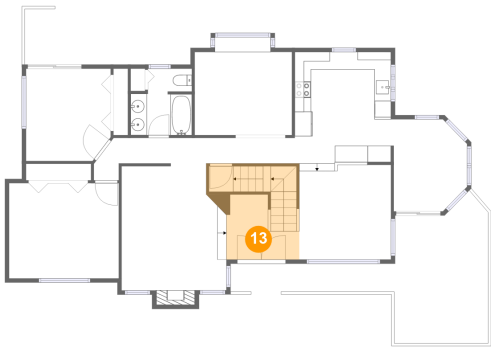
12 Floor 2 - Porch



Max Dimensions: 31'5" x 18'7"
Calculated Area: 255 sq. ft
Included: No

Heated: No
Finished: Yes
Enclosed: No
Contiguous: Yes
Permitted: Yes
Wet space: No
Addition: No
Conversion: No

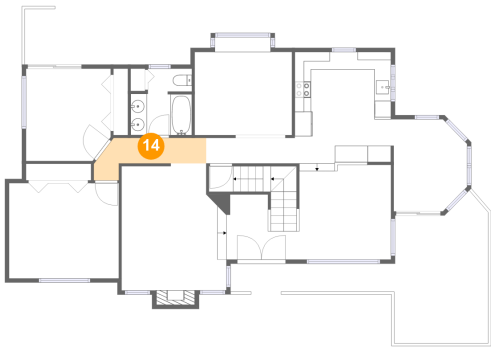
13 Floor 2 - Foyer



Max Dimensions: 8'11" x 7'11"
Calculated Area: 117 sq. ft
Included: Yes

Heated: Yes
Finished: Yes
Enclosed: Yes
Contiguous: Yes
Permitted: Yes
Wet space: No
Addition: No
Conversion: No

14 Floor 2 - Hall

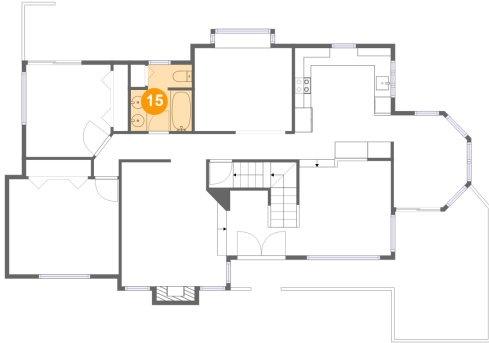


Max Dimensions: 13'4" x 5'2"
Calculated Area: 45 sq. ft
Included: Yes

Heated: Yes
Finished: Yes
Enclosed: Yes
Contiguous: Yes
Permitted: Yes
Wet space: No
Addition: No
Conversion: No

27336 Mountain Park Road, Evergreen, Jefferson County,
Colorado, United States, 80439

15 Floor 2 - Bath



Max Dimensions: 7'6" x 8'1"
Calculated Area: 53 sq. ft
Included: Yes

Heated: Yes
Finished: Yes
Enclosed: Yes
Contiguous: Yes
Permitted: Yes
Wet space: Yes
Addition: No
Conversion: No

16 Floor 2 - Bedroom



Max Dimensions: 13'5" x 11'7"
Calculated Area: 155 sq. ft
Included: Yes

Heated: Yes
Finished: Yes
Enclosed: Yes
Contiguous: Yes
Permitted: Yes
Wet space: No
Addition: No
Conversion: No

17 Floor 2 - Living Room



Max Dimensions: 12'9" x 15'5"
Calculated Area: 192 sq. ft
Included: Yes

Heated: Yes
Finished: Yes
Enclosed: Yes
Contiguous: Yes
Permitted: Yes
Wet space: No
Addition: No
Conversion: No

27336 Mountain Park Road, Evergreen, Jefferson County,
Colorado, United States, 80439

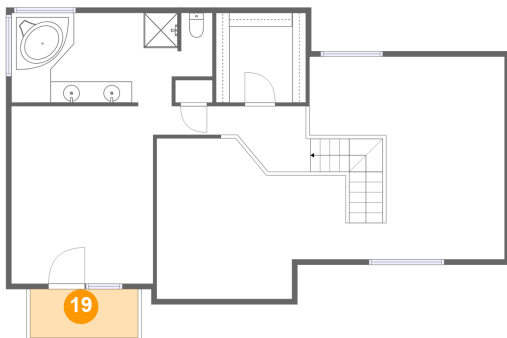
18 Floor 2 - Kitchen



Max Dimensions: 11'9" x 13'6"
Calculated Area: 159 sq. ft
Included: Yes

Heated: Yes
Finished: Yes
Enclosed: Yes
Contiguous: Yes
Permitted: Yes
Wet space: No
Addition: No
Conversion: No

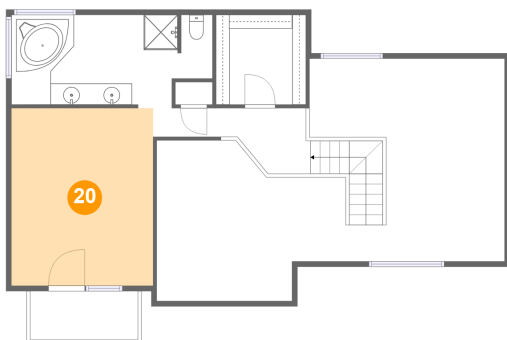
19 Floor 3 - Balcony



Max Dimensions: 10'2" x 4'7"
Calculated Area: 47 sq. ft
Included: No

Heated: No
Finished: Yes
Enclosed: No
Contiguous: Yes
Permitted: Yes
Wet space: No
Addition: No
Conversion: No

20 Floor 3 - Primary Bedroom

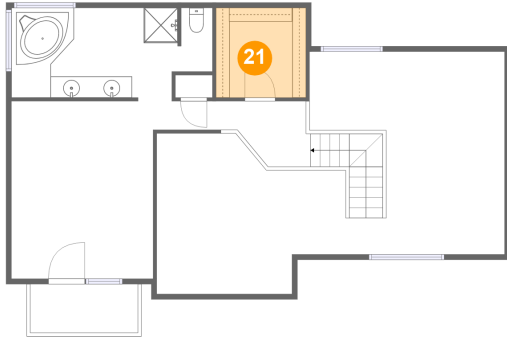


Max Dimensions: 13'4" x 16'9"
Calculated Area: 224 sq. ft
Included: Yes

Heated: Yes
Finished: Yes
Enclosed: Yes
Contiguous: Yes
Permitted: Yes
Wet space: No
Addition: No
Conversion: No

27336 Mountain Park Road, Evergreen, Jefferson County,
Colorado, United States, 80439

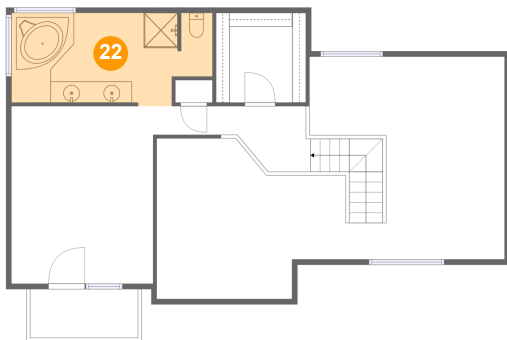
21 Floor 3 - W.I.C.



Max Dimensions: 8'6" x 8'6"
Calculated Area: 72 sq. ft
Included: Yes

Heated: Yes
Finished: Yes
Enclosed: Yes
Contiguous: Yes
Permitted: Yes
Wet space: No
Addition: No
Conversion: No

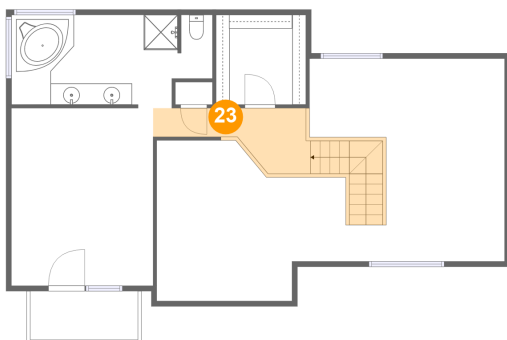
22 Floor 3 - Primary Bath



Max Dimensions: 19'0" x 8'10"
Calculated Area: 151 sq. ft
Included: Yes

Heated: Yes
Finished: Yes
Enclosed: Yes
Contiguous: Yes
Permitted: Yes
Wet space: Yes
Addition: No
Conversion: No

23 Floor 3 - Hall



Max Dimensions: 14'5" x 6'2"
Calculated Area: 107 sq. ft
Included: Yes

Heated: Yes
Finished: Yes
Enclosed: Yes
Contiguous: Yes
Permitted: Yes
Wet space: No
Addition: No
Conversion: No

27336 Mountain Park Road, Evergreen, Jefferson County,
Colorado, United States, 80439

24 Floor 3 - Open To Below



Max Dimensions: 32'10" x 19'1"
Calculated Area: 502 sq. ft
Included: No

Heated: No
Finished: No
Enclosed: No
Contiguous: Yes
Permitted: No
Wet space: No
Addition: No
Conversion: No