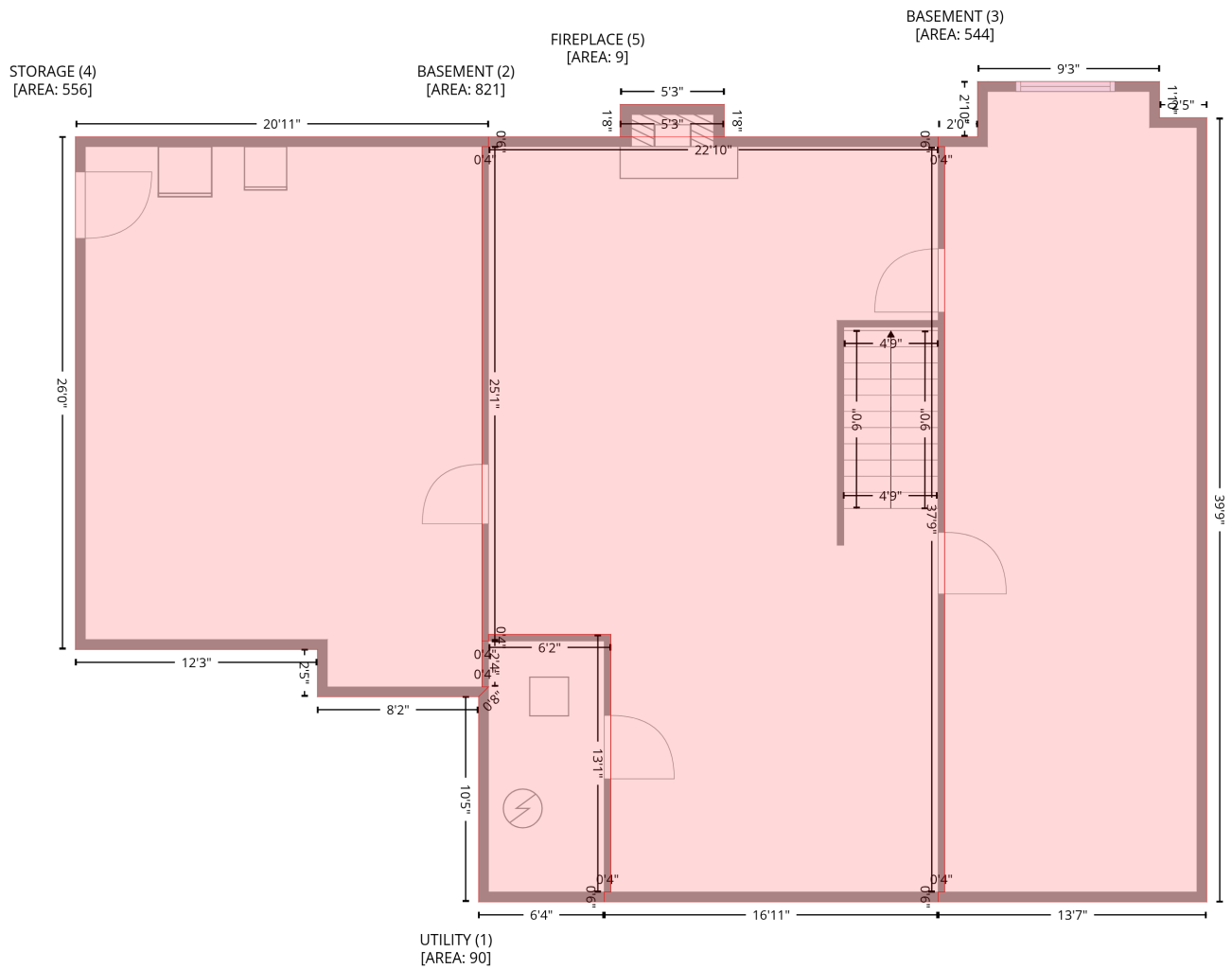


# 4019 Taylorsville Rd, Taylorsville, KY, US

Gross Living Area: 3958 sq. ft

## Level 1 - Below Grade



| Space                             | Area (sq. ft) | Calculation <small>Coordinate Polygon Area Algorithm using inches</small>   |
|-----------------------------------|---------------|---|
| UTILITY (1)<br>(Non-living area)  | 90            | $-\left((374 + 374) * (477.9 - 634.6) + (374 + 370) * (634.6 - 634.6) + (370 + 370) * (634.6 - 640.6) + (370 + 293.6) * (640.6 - 640.6) + (293.6 + 293.6) * (640.6 - 515.8) + (293.6 + 299.6) * (515.8 - 509.8) + (299.6 + 295.6) * (509.8 - 509.8) + (295.6 + 295.6) * (509.8 - 481.9) + (295.6 + 299.6) * (481.9 - 481.9) + (299.6 + 299.6) * (481.9 - 477.9) + (299.6 + 374) * (477.9 - 477.9)\right) * 0.5 * 0.00694$   |
| BASEMENT (2)<br>(Non-living area) | 821           | $-\left((573.2 + 573.2) * (175.2 - 181.2) + (573.2 + 577.2) * (181.2 - 181.2) + (577.2 + 577.2) * (181.2 - 634.6) + (577.2 + 573.2) * (634.6 - 634.6) + (573.2 + 573.2) * (634.6 - 640.6) + (573.2 + 370) * (640.6 - 640.6) + (370 + 370) * (640.6 - 634.6) + (370 + 374) * (634.6 - 634.6) + (374 + 374) * (634.6 - 477.9) + (374 + 299.6) * (477.9 - 477.9) + (299.6 + 299.6) * (477.9 - 481.9) + (299.6 + 295.6) * (481.9 - 481.9) + (295.6 + 295.6) * (481.9 - 181.2) + (295.6 + 299.6) * (181.2 - 181.2) + (299.6 + 299.6) * (181.2 - 175.2) + (299.6 + 573.2) * (175.2 - 175.2)\right) * 0.5 * 0.00694$ |

# 4019 Taylorsville Rd, Taylorsville, KY, US

Gross Living Area: 3958 sq. ft

## Level 1 - Below Grade

| Space                          | Area (sq. ft) | Calculation <small>Coordinate Polygon Area Algorithm using inches</small>   |
|--------------------------------|---------------|---|
| BASEMENT<br>(Non-living area)  | 544           | $-\left((707.8 + 707.8) * (141.6 - 163.6) + (707.8 + 736.6) * (163.6 - 163.6) + (736.6 + 736.6) * (163.6 - 640.6) + (736.6 + 573.2) * (640.6 - 640.6) + (573.2 + 573.2) * (640.6 - 634.6) + (573.2 + 577.2) * (634.6 - 634.6) + (577.2 + 577.2) * (634.6 - 181.2) + (577.2 + 573.2) * (181.2 - 181.2) + (573.2 + 573.2) * (181.2 - 175.2) + (573.2 + 597.1) * (175.2 - 175.2) + (597.1 + 597.1) * (175.2 - 141.6) + (597.1 + 707.8) * (141.6 - 141.6)\right) * 0.5 * 0.00694$ |
| STORAGE<br>(Non-living area)   | 556           | $-\left((299.6 + 299.6) * (175.2 - 181.2) + (299.6 + 295.6) * (181.2 - 181.2) + (295.6 + 295.6) * (181.2 - 509.8) + (295.6 + 299.6) * (509.8 - 509.8) + (299.6 + 293.6) * (509.8 - 515.8) + (293.6 + 195.6) * (515.8 - 515.8) + (195.6 + 195.6) * (515.8 - 487) + (195.6 + 48.3) * (487 - 487) + (48.3 + 48.3) * (487 - 175.2) + (48.3 + 299.6) * (175.2 - 175.2)\right) * 0.5 * 0.00694$   |
| FIREPLACE<br>(Non-living area) | 9             | $-\left((443.1 + 443.1) * (155.5 - 175.2) + (443.1 + 379.7) * (175.2 - 175.2) + (379.7 + 379.7) * (175.2 - 155.5) + (379.7 + 443.1) * (155.5 - 155.5)\right) * 0.5 * 0.00694$   |

# 4019 Taylorsville Rd, Taylorsville, KY, US

Gross Living Area: 3958 sq. ft

## Level 2



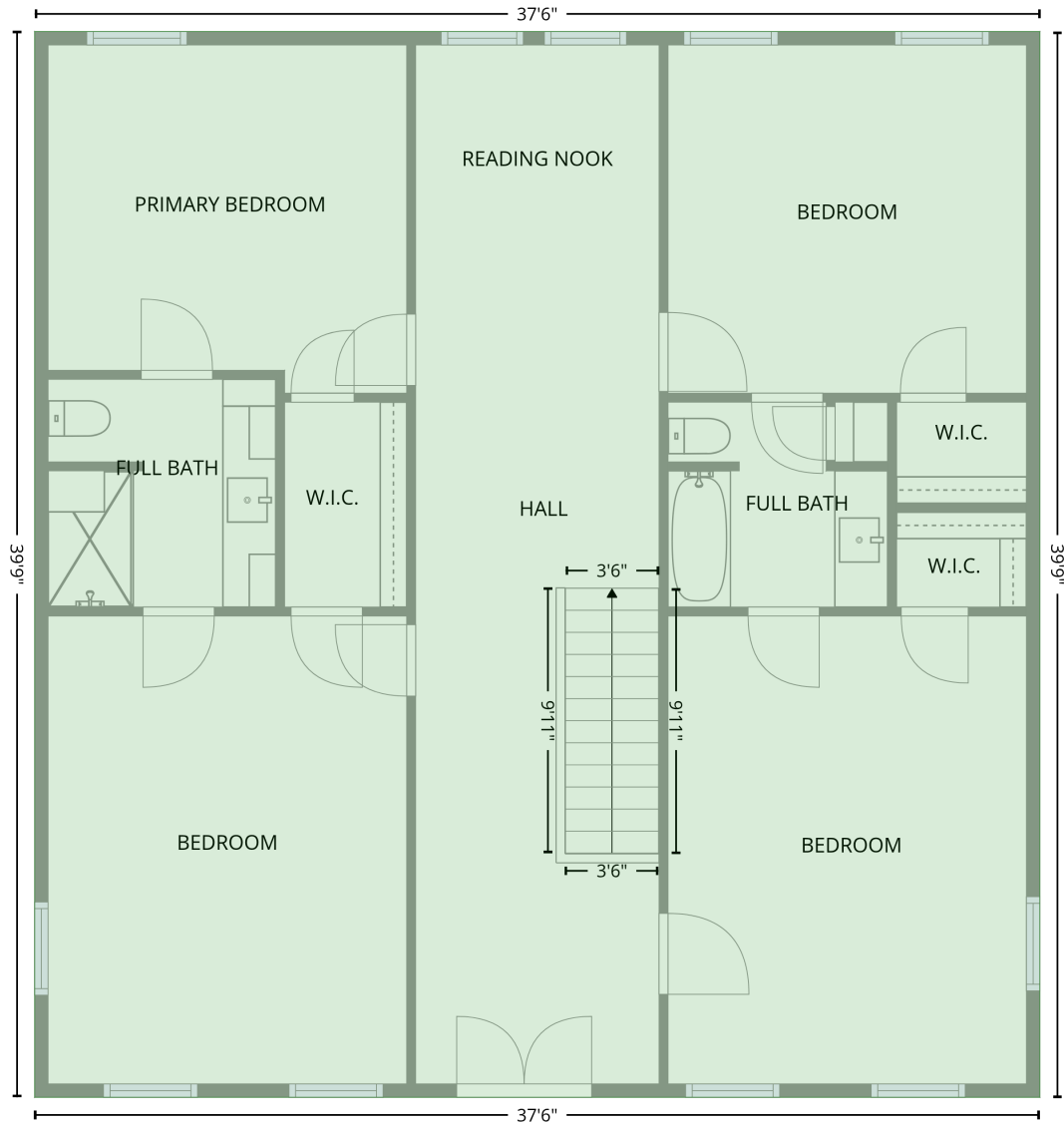
| Space                          | Area (sq. ft) | Calculation   |
|--------------------------------|---------------|---|
| FLOOR 2<br>(Living area)       | 2468          | $-\left((73.9 + 287.8) * (-0.5 - -0.5) + (287.8 + 287.8) * (-0.5 - 163.7) + (287.8 + 597.1) * (163.7 - 163.7) + (597.1 + 597.1) * (163.7 - 114.9) + (597.1 + 724.8) * (114.9 - 114.9) + (724.8 + 724.8) * (114.9 - 163.7) + (724.8 + 903.5) * (163.7 - 163.7) + (903.5 + 903.5) * (163.7 - 239.7) + (903.5 + 897.5) * (239.7 - 239.7) + (897.5 + 897.5) * (239.7 - 245.7) + (897.5 + 743.6) * (245.7 - 245.7) + (743.6 + 743.6) * (245.7 - 640.6) + (743.6 + 293.6) * (640.6 - 640.6) + (293.6 + 293.6) * (640.6 - 515.8) + (293.6 + 48.3) * (515.8 - 515.8) + (48.3 + 48.3) * (515.8 - 163.7) + (48.3 + 73.9) * (163.7 - 163.7) + (73.9 + 73.9) * (163.7 - -0.5)\right) * 0.5 * 0.00694$ |
| GARAGE<br>(Non-living area)    | 468           | $-\left((992.5 + 992.5) * (239.7 - 514.2) + (992.5 + 743.6) * (514.2 - 514.2) + (743.6 + 743.6) * (514.2 - 245.7) + (743.6 + 897.5) * (245.7 - 245.7) + (897.5 + 897.5) * (245.7 - 239.7) + (897.5 + 992.5) * (239.7 - 239.7)\right) * 0.5 * 0.00694$   |
| FIREPLACE<br>(Non-living area) | 12            | $-\left((452.4 + 452.4) * (141.6 - 163.7) + (452.4 + 375.1) * (163.7 - 163.7) + (375.1 + 375.1) * (163.7 - 141.6) + (375.1 + 452.4) * (141.6 - 141.6)\right) * 0.5 * 0.00694$   |

# 4019 Taylorsville Rd, Taylorsville, KY, US

Gross Living Area: 3958 sq. ft

## Level 3

FLOOR 3  
[AREA: 1490]



| Space                    | Area (sq. ft) | Calculation  |
|--------------------------|---------------|--|
| FLOOR 3<br>(Living area) | 1490          | Coordinate Polygon Area Algorithm using inches<br>$-((743.6 + 743.6) * (163.7 - 640.6) + (743.6 + 293.6) * (640.6 - 640.6) + (293.6 + 293.6) * (640.6 - 163.7) + (293.6 + 743.6) * (163.7 - 163.7)) * 0.5 * 0.00694$ |