

7325 Legacy Pkwy, Cheyenne, WY, US



Property summary


 **0** Garages

 **6** Bedrooms

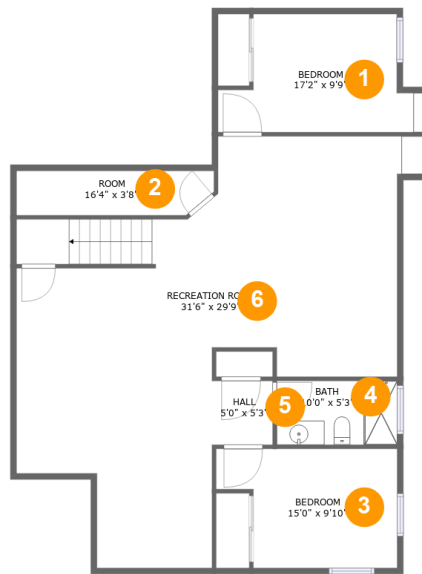
 **3** Bathrooms

 **1** Half baths

 **3** Floors

 **4,034** Gross living area sqft

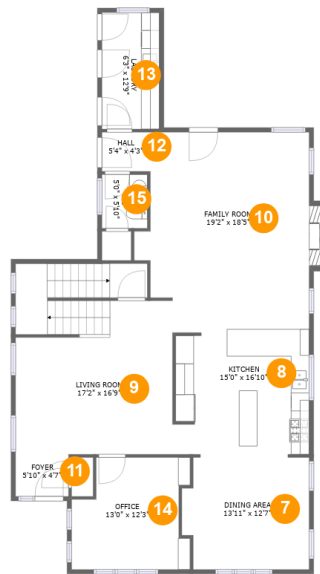
 **4,281** Total sqft

7325 Legacy Pkwy, Cheyenne, WY, US**Room dimensions**

Floor 1

Total sqft: 1269 Living area: 1269

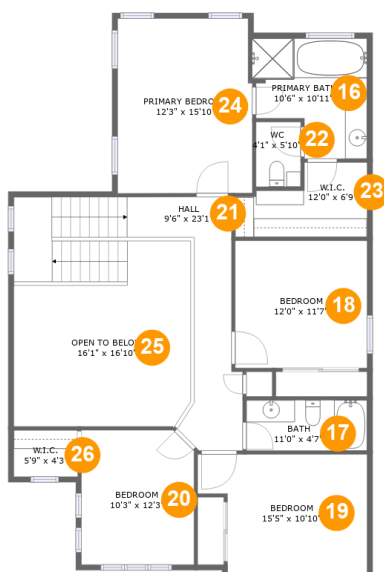
#		Dimensions	sqft	Counted as living area
1	Bedroom	17'2" x 9'9"	134 sq. ft	Yes
2	Room	16'4" x 3'8"	58 sq. ft	Yes
3	Bedroom	15'0" x 9'10"	127 sq. ft	Yes
4	Bath	10'0" x 5'3"	53 sq. ft	Yes
5	Hall	5'0" x 5'3"	26 sq. ft	Yes
6	Recreation Room	31'6" x 29'9"	708 sq. ft	Yes

7325 Legacy Pkwy, Cheyenne, WY, US**Room dimensions**

Floor 2

Total sqft: 1543 Living area: 1530

#		Dimensions	sqft	Counted as living area
7	Dining Area	13'11" x 12'7"	165 sq. ft	Yes
8	Kitchen	15'0" x 16'10"	252 sq. ft	Yes
9	Living Room	17'2" x 16'9"	341 sq. ft	Yes
10	Family Room	19'2" x 18'5"	337 sq. ft	Yes
11	Foyer	5'10" x 4'7"	27 sq. ft	Yes
12	Hall	5'4" x 4'3"	23 sq. ft	Yes
13	Laundry	6'3" x 12'9"	80 sq. ft	Yes
14	Office	13'0" x 12'3"	140 sq. ft	Yes
15	WC	5'0" x 5'10"	29 sq. ft	Yes

7325 Legacy Pkwy, Cheyenne, WY, US**Room dimensions**

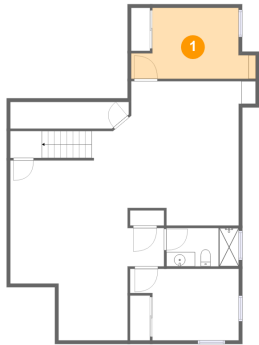
Floor 3

Total sqft: 1469 Living area: 1235

#		Dimensions	sqft	Counted as living area
16	Primary Bath	10'6" x 10'11"	96 sq. ft	Yes
17	Bath	11'0" x 4'7"	50 sq. ft	Yes
18	Bedroom	12'0" x 11'7"	139 sq. ft	Yes
19	Bedroom	15'5" x 10'10"	148 sq. ft	Yes
20	Bedroom	10'3" x 12'3"	124 sq. ft	Yes
21	Hall	9'6" x 23'1"	202 sq. ft	Yes
22	WC	4'1" x 5'10"	24 sq. ft	Yes
23	W.I.C.	12'0" x 6'9"	64 sq. ft	Yes
24	Primary Bedroom	12'3" x 15'10"	193 sq. ft	Yes
25	Open To Below	16'1" x 16'10"	228 sq. ft	No
26	W.I.C.	5'9" x 4'3"	25 sq. ft	Yes

7325 Legacy Pkwy, Cheyenne, WY, US

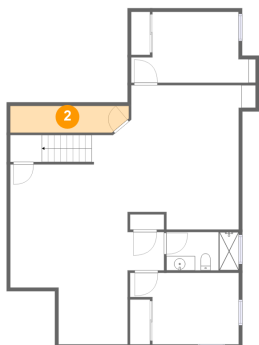
1 Floor 1 - Bedroom



Dimensions: 17'2" x 9'9"
Area: 134 sq. ft
Counted as living area: Yes

Heated: Yes
Finished: Yes
Enclosed: Yes
Contiguous: Yes
Permitted: Yes
Wet space: No
Addition: No
Conversion: No

2 Floor 1 - Room

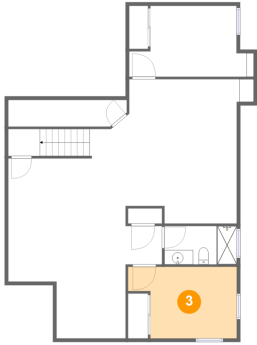


Dimensions: 16'4" x 3'8"
Area: 58 sq. ft
Counted as living area: Yes

Heated: Yes
Finished: Yes
Enclosed: Yes
Contiguous: Yes
Permitted: Yes
Wet space: No
Addition: No
Conversion: No

7325 Legacy Pkwy, Cheyenne, WY, US

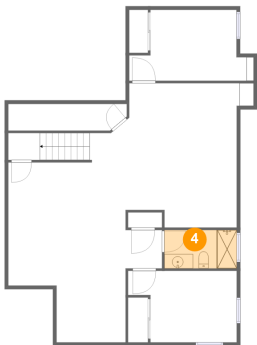
3 Floor 1 - Bedroom



Dimensions: 15'0" x 9'10"
Area: 127 sq. ft
Counted as living area: Yes

Heated: Yes
Finished: Yes
Enclosed: Yes
Contiguous: Yes
Permitted: Yes
Wet space: No
Addition: No
Conversion: No

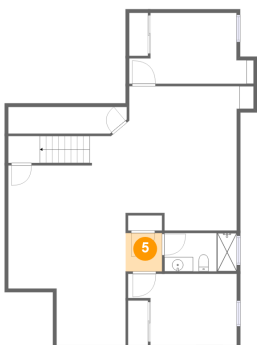
4 Floor 1 - Bath



Dimensions: 10'0" x 5'3"
Area: 53 sq. ft
Counted as living area: Yes

Heated: Yes
Finished: Yes
Enclosed: Yes
Contiguous: Yes
Permitted: Yes
Wet space: Yes
Addition: No
Conversion: No

5 Floor 1 - Hall

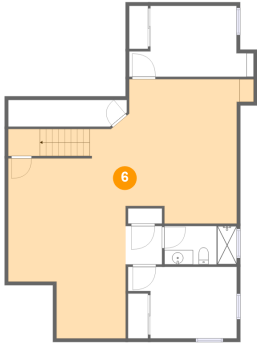


Dimensions: 5'0" x 5'3"
Area: 26 sq. ft
Counted as living area: Yes

Heated: Yes
Finished: Yes
Enclosed: Yes
Contiguous: Yes
Permitted: Yes
Wet space: No
Addition: No
Conversion: No

7325 Legacy Pkwy, Cheyenne, WY, US

6 Floor 1 - Recreation Room



Dimensions: 31'6" x 29'9"
Area: 708 sq. ft
Counted as living area: Yes

Heated: Yes
Finished: Yes
Enclosed: Yes
Contiguous: Yes
Permitted: Yes
Wet space: No
Addition: No
Conversion: No

7 Floor 2 - Dining Area



Dimensions: 13'11" x 12'7"
Area: 165 sq. ft
Counted as living area: Yes

Heated: Yes
Finished: Yes
Enclosed: Yes
Contiguous: Yes
Permitted: Yes
Wet space: No
Addition: No
Conversion: No

8 Floor 2 - Kitchen



Dimensions: 15'0" x 16'10"
Area: 252 sq. ft
Counted as living area: Yes

Heated: Yes
Finished: Yes
Enclosed: Yes
Contiguous: Yes
Permitted: Yes
Wet space: No
Addition: No
Conversion: No

7325 Legacy Pkwy, Cheyenne, WY, US

9 Floor 2 - Living Room



Dimensions: 17'2" x 16'9"
Area: 341 sq. ft
Counted as living area: Yes

Heated: Yes
Finished: Yes
Enclosed: Yes
Contiguous: Yes
Permitted: Yes
Wet space: No
Addition: No
Conversion: No

10 Floor 2 - Family Room



Dimensions: 19'2" x 18'5"
Area: 337 sq. ft
Counted as living area: Yes

Heated: Yes
Finished: Yes
Enclosed: Yes
Contiguous: Yes
Permitted: Yes
Wet space: No
Addition: No
Conversion: No

11 Floor 2 - Foyer



Dimensions: 5'10" x 4'7"
Area: 27 sq. ft
Counted as living area: Yes

Heated: Yes
Finished: Yes
Enclosed: Yes
Contiguous: Yes
Permitted: Yes
Wet space: No
Addition: No
Conversion: No

7325 Legacy Pkwy, Cheyenne, WY, US

12 Floor 2 - Hall



Dimensions: 5'4" x 4'3"
Area: 23 sq. ft
Counted as living area: Yes

Heated: Yes
Finished: Yes
Enclosed: Yes
Contiguous: Yes
Permitted: Yes
Wet space: No
Addition: No
Conversion: No

13 Floor 2 - Laundry



Dimensions: 6'3" x 12'9"
Area: 80 sq. ft
Counted as living area: Yes

Heated: Yes
Finished: Yes
Enclosed: Yes
Contiguous: Yes
Permitted: Yes
Wet space: No
Addition: No
Conversion: No

14 Floor 2 - Office



Dimensions: 13'0" x 12'3"
Area: 140 sq. ft
Counted as living area: Yes

Heated: Yes
Finished: Yes
Enclosed: Yes
Contiguous: Yes
Permitted: Yes
Wet space: No
Addition: No
Conversion: No

7325 Legacy Pkwy, Cheyenne, WY, US

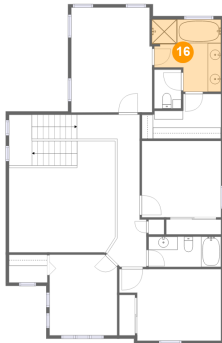
15 Floor 2 - WC



Dimensions: 5'0" x 5'10"
Area: 29 sq. ft
Counted as living area: Yes

Heated: Yes
Finished: Yes
Enclosed: Yes
Contiguous: Yes
Permitted: Yes
Wet space: Yes
Addition: No
Conversion: No

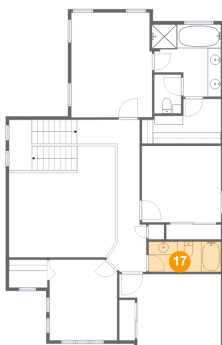
16 Floor 3 - Primary Bath



Dimensions: 10'6" x 10'11"
Area: 96 sq. ft
Counted as living area: Yes

Heated: Yes
Finished: Yes
Enclosed: Yes
Contiguous: Yes
Permitted: Yes
Wet space: Yes
Addition: No
Conversion: No

17 Floor 3 - Bath



Dimensions: 11'0" x 4'7"
Area: 50 sq. ft
Counted as living area: Yes

Heated: Yes
Finished: Yes
Enclosed: Yes
Contiguous: Yes
Permitted: Yes
Wet space: Yes
Addition: No
Conversion: No

7325 Legacy Pkwy, Cheyenne, WY, US

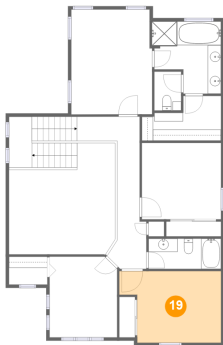
18 Floor 3 - Bedroom



Dimensions: 12'0" x 11'7"
Area: 139 sq. ft
Counted as living area: Yes

Heated: Yes
Finished: Yes
Enclosed: Yes
Contiguous: Yes
Permitted: Yes
Wet space: No
Addition: No
Conversion: No

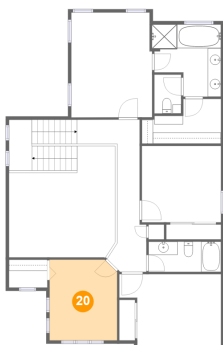
19 Floor 3 - Bedroom



Dimensions: 15'5" x 10'10"
Area: 148 sq. ft
Counted as living area: Yes

Heated: Yes
Finished: Yes
Enclosed: Yes
Contiguous: Yes
Permitted: Yes
Wet space: No
Addition: No
Conversion: No

20 Floor 3 - Bedroom



Dimensions: 10'3" x 12'3"
Area: 124 sq. ft
Counted as living area: Yes

Heated: Yes
Finished: Yes
Enclosed: Yes
Contiguous: Yes
Permitted: Yes
Wet space: No
Addition: No
Conversion: No

7325 Legacy Pkwy, Cheyenne, WY, US

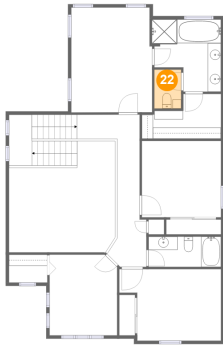
21 Floor 3 - Hall



Dimensions: 9'6" x 23'1"
Area: 202 sq. ft
Counted as living area: Yes

Heated: Yes
Finished: Yes
Enclosed: Yes
Contiguous: Yes
Permitted: Yes
Wet space: No
Addition: No
Conversion: No

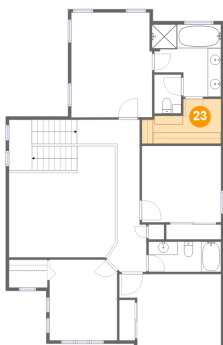
22 Floor 3 - WC



Dimensions: 4'1" x 5'10"
Area: 24 sq. ft
Counted as living area: Yes

Heated: Yes
Finished: Yes
Enclosed: Yes
Contiguous: Yes
Permitted: Yes
Wet space: Yes
Addition: No
Conversion: No

23 Floor 3 - W.I.C.

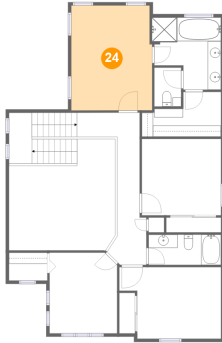


Dimensions: 12'0" x 6'9"
Area: 64 sq. ft
Counted as living area: Yes

Heated: Yes
Finished: Yes
Enclosed: Yes
Contiguous: Yes
Permitted: Yes
Wet space: No
Addition: No
Conversion: No

7325 Legacy Pkwy, Cheyenne, WY, US

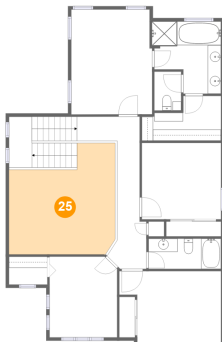
24 Floor 3 - Primary Bedroom



Dimensions: 12'3" x 15'10"
Area: 193 sq. ft
Counted as living area: Yes

Heated: Yes
Finished: Yes
Enclosed: Yes
Contiguous: Yes
Permitted: Yes
Wet space: No
Addition: No
Conversion: No

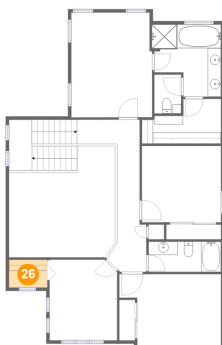
25 Floor 3 - Open To Below



Dimensions: 16'1" x 16'10"
Area: 228 sq. ft
Counted as living area: No

Heated: No
Finished: No
Enclosed: No
Contiguous: Yes
Permitted: No
Wet space: No
Addition: No
Conversion: No

26 Floor 3 - W.I.C.



Dimensions: 5'9" x 4'3"
Area: 25 sq. ft
Counted as living area: Yes

Heated: Yes
Finished: Yes
Enclosed: Yes
Contiguous: Yes
Permitted: Yes
Wet space: No
Addition: No
Conversion: No