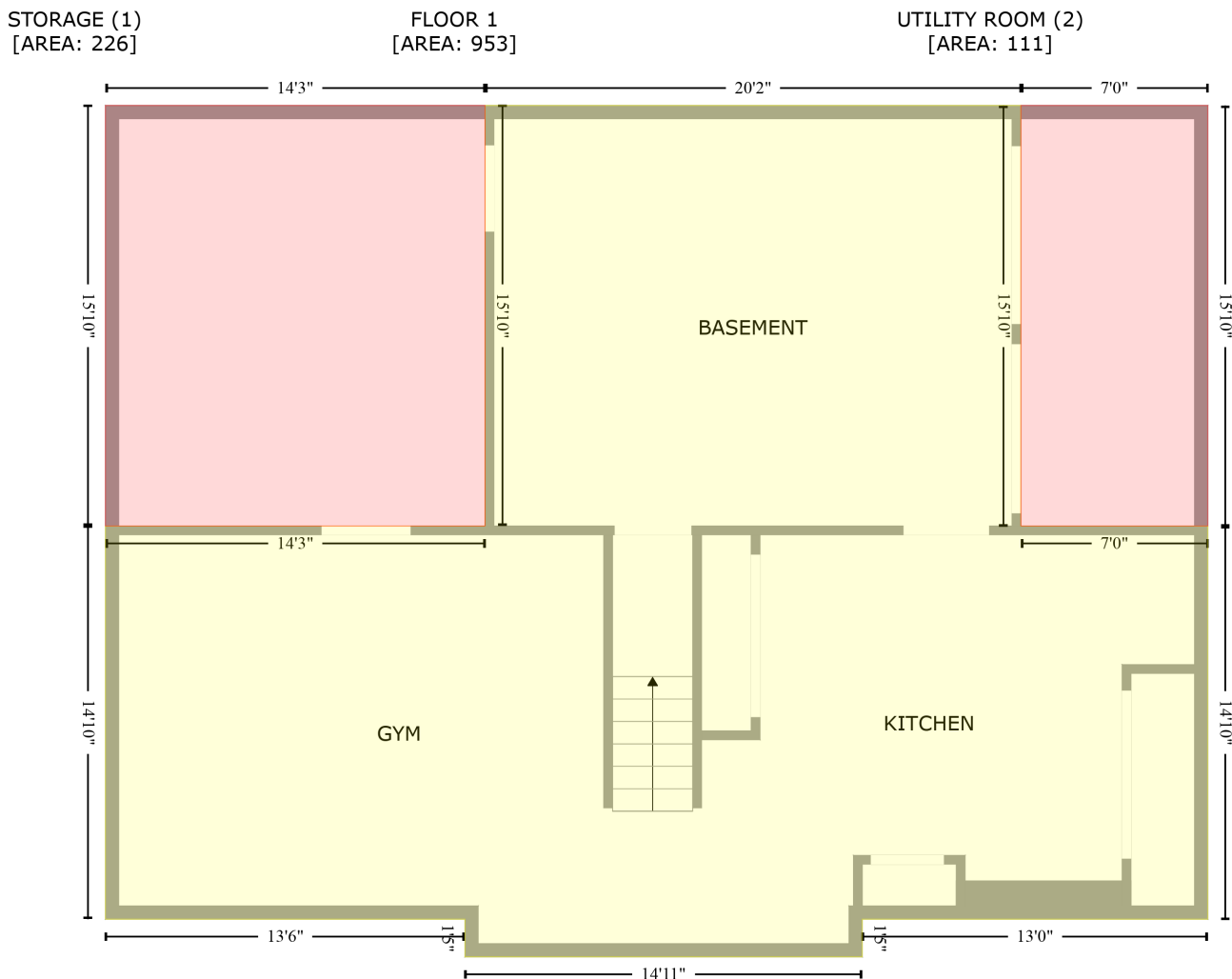


4071 Briarwood Court, Ashtabula, Ashtabula County, Ohio, United States, 44004

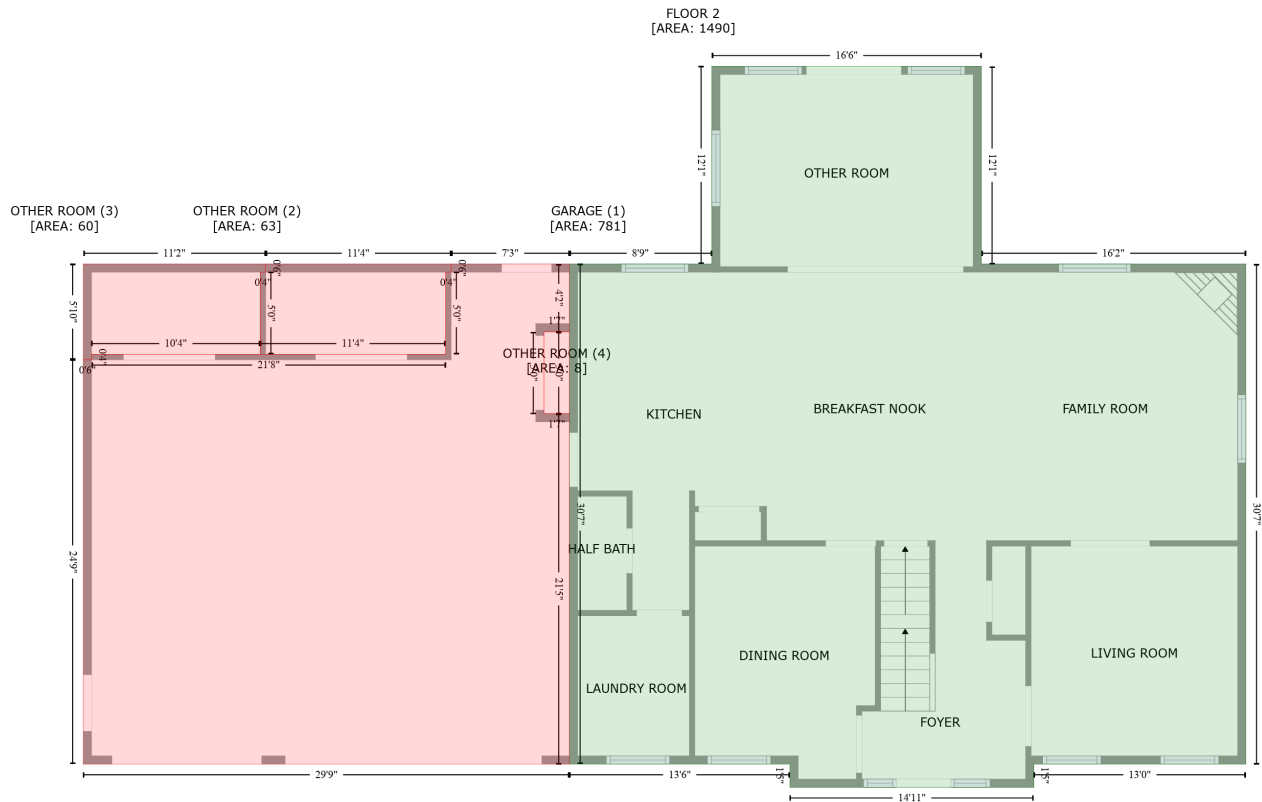
Gross Living Area: 3206 sq. ft



| Space | Area (sq. ft) | Calculation <small>Coordinate Polygon Area Algorithm using inches</small> |
|-----------------------------------|---------------|---|
| FLOOR 1 (Living area) | 953 | $-\left((611 + 611) * (734 - 751) + (611 + 431.7) * (751 - 751) + (431.7 + 431.7) * (751 - 734) + (431.7 + 269.5) * (734 - 734) + (269.5 + 269.5) * (734 - 556.4) + (269.5 + 440.8) * (556.4 - 556.4) + (440.8 + 440.8) * (556.4 - 366.5) + (440.8 + 682.6) * (366.5 - 366.5) + (682.6 + 682.6) * (366.5 - 556.4) + (682.6 + 766.9) * (556.4 - 556.4) + (766.9 + 766.9) * (556.4 - 734) + (766.9 + 611) * (734 - 734)\right) * 0.5 * 0.00694$ |
| STORAGE (Non-living area) | 226 | $-\left((440.8 + 440.8) * (366.5 - 556.4) + (440.8 + 269.5) * (556.4 - 556.4) + (269.5 + 269.5) * (556.4 - 366.5) + (269.5 + 440.8) * (366.5 - 366.5)\right) * 0.5 * 0.00694$ |
| UTILITY ROOM (Non-living area) | 111 | $-\left((766.9 + 766.9) * (366.5 - 556.4) + (766.9 + 682.6) * (556.4 - 556.4) + (682.6 + 682.6) * (556.4 - 366.5) + (682.6 + 766.9) * (366.5 - 366.5)\right) * 0.5 * 0.00694$ |

4071 Briarwood Court, Ashtabula, Ashtabula County, Ohio, United States, 44004

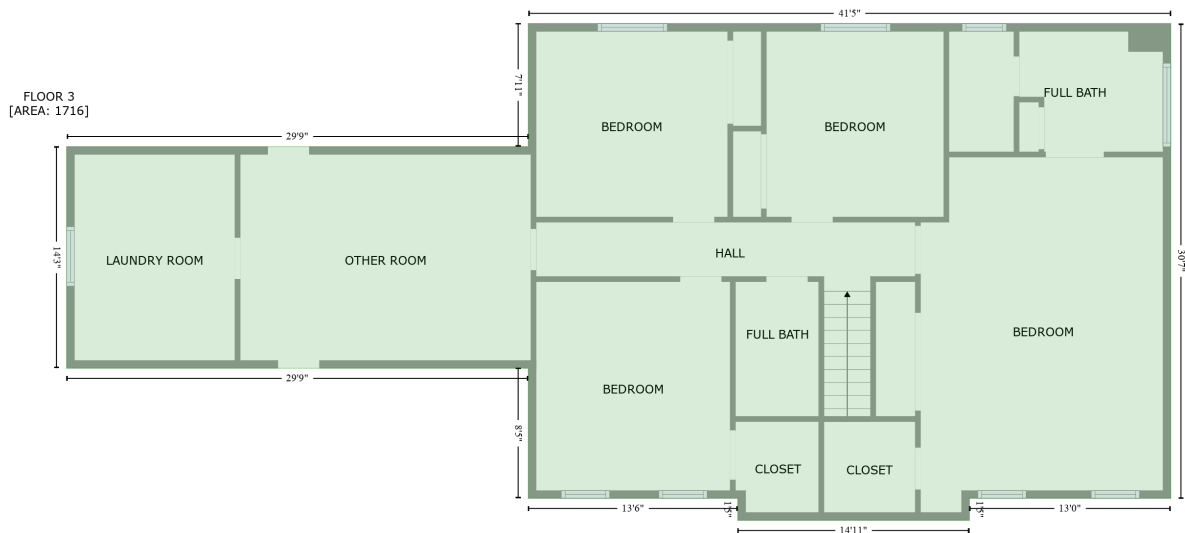
Gross Living Area: 3206 sq. ft



| Space | Area (sq. ft) | Calculation |
|---------------------------------|---------------|--|
| FLOOR 2 (Living area) | 1490 | $-(607.4 + 607.4) * (186.3 - 331.6) + (607.4 + 801.9) * (331.6 - 331.6) + (801.9 + 801.9) * (331.6 - 699) + (801.9 + 646) * (699 - 699) + (646 + 646) * (699 - 716) + (646 + 466.6) * (716 - 716) + (466.6 + 466.6) * (716 - 699) + (466.6 + 304.4) * (699 - 699) + (304.4 + 304.4) * (699 - 331.6) + (304.4 + 409.2) * (331.6 - 331.6) + (409.2 + 409.2) * (331.6 - 186.3) + (409.2 + 607.4) * (186.3 - 186.3) * 0.5 * 0.00694$ |
| GARAGE (Non-living area) | 781 | $-(304.4 + 304.4) * (331.6 - 381.4) + (304.4 + 285.7) * (381.4 - 381.4) + (285.7 + 285.7) * (381.4 - 441.5) + (285.7 + 304.4) * (441.5 - 441.5) + (304.4 + 304.4) * (441.5 - 699) + (304.4 + -53) * (699 - 699) + (-53 + -53) * (699 - 402) + (-53 + -47) * (402 - 402) + (-47 + -47) * (402 - 398) + (-47 + 213.4) * (398 - 398) + (213.4 + 213.4) * (398 - 337.6) + (213.4 + 217.4) * (337.6 - 337.6) + (217.4 + 217.4) * (337.6 - 331.6) + (217.4 + 304.4) * (331.6 - 331.6) * 0.5 * 0.00694$ |
| OTHER ROOM (Non-living area) | 63 | $-(217.4 + 217.4) * (331.6 - 337.6) + (217.4 + 213.4) * (337.6 - 337.6) + (213.4 + 213.4) * (337.6 - 398) + (213.4 + 77) * (398 - 398) + (77 + 77) * (398 - 337.6) + (77 + 81) * (337.6 - 337.6) + (81 + 81) * (337.6 - 331.6) + (81 + 217.4) * (331.6 - 331.6) * 0.5 * 0.00694$ |
| OTHER ROOM (Non-living area) | 60 | $-(81 + 81) * (331.6 - 337.6) + (81 + 77) * (337.6 - 337.6) + (77 + 77) * (337.6 - 398) + (77 + -47) * (398 - 398) + (-47 + -47) * (398 - 402) + (-47 + -53) * (402 - 402) + (-53 + -53) * (402 - 331.6) + (-53 + 81) * (331.6 - 331.6) * 0.5 * 0.00694$ |
| OTHER ROOM (Non-living area) | 8 | $-(304.4 + 304.4) * (381.4 - 441.5) + (304.4 + 285.7) * (441.5 - 441.5) + (285.7 + 285.7) * (441.5 - 381.4) + (285.7 + 304.4) * (381.4 - 381.4) * 0.5 * 0.00694$ |

4071 Briarwood Court, Ashtabula, Ashtabula County, Ohio, United States, 44004

Gross Living Area: 3206 sq. ft



| Space | Area (sq. ft) | Calculation |
|--------------------------|---------------|--|
| FLOOR 3 (Living area) | 1716 | Coordinate Polygon Area Algorithm using inches $-((766.6 + 766.6) * (366.9 - 734.3) + (766.6 + 610.7) * (734.3 - 734.3) + (610.7 + 610.7) * (734.3 - 751.3) + (610.7 + 431.4) * (751.3 - 751.3) + (431.4 + 431.4) * (751.3 - 734.3) + (431.4 + 269.2) * (734.3 - 734.3) + (269.2 + 269.2) * (734.3 - 633.6) + (269.2 + -88.3) * (633.6 - 633.6) + (-88.3 + -88.3) * (633.6 - 462.1) + (-88.3 + 269.2) * (462.1 - 462.1) + (269.2 + 269.2) * (462.1 - 366.9) + (269.2 + 766.6) * (366.9 - 366.9)) * 0.5 * 0.00694$ |