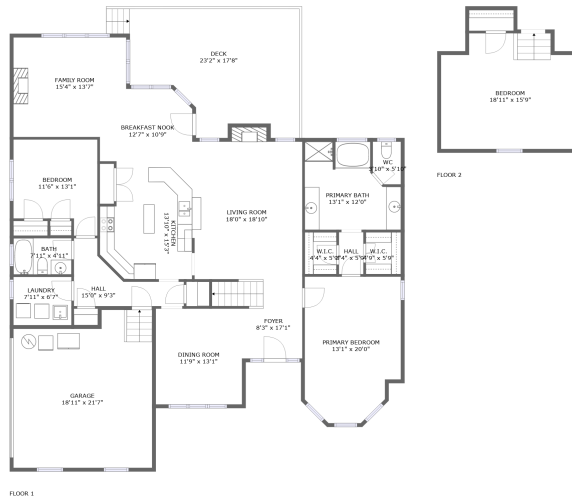
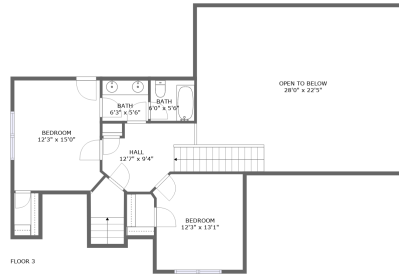


502 Savannah Ridge, Mount View Estates, Murfreesboro, Rutherford County, Tennessee,




Property Summary

 **1** garages

 **5** bedrooms

 **3** bathrooms

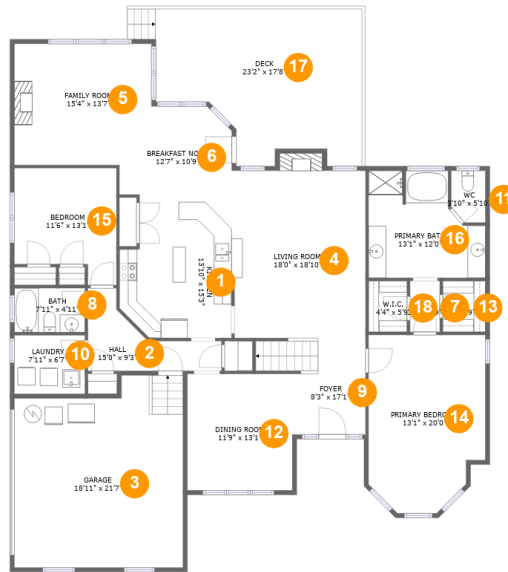
 **0** half baths

 **3** floors

 **3,043** Gross Living Area sqft

 **4,428** total sqft

502 Savannah Ridge, Mount View Estates, Murfreesboro, Rutherford County, Tennessee,



Room Dimensions

Floor 1

Total sqft: 2767

Living area: 2017

#	Room name	Dimensions	Area (sqft)	Counted as Living Area
1	Kitchen	13'10" x 15'3"	179 sq. ft	Yes
2	Hall	15'0" x 9'3"	76 sq. ft	Yes
3	Garage	18'11" x 21'7"	377 sq. ft	No
4	Living Room	18'0" x 18'10"	292 sq. ft	Yes
5	Family Room	15'4" x 13'7"	198 sq. ft	Yes
6	Breakfast Nook	12'7" x 10'9"	113 sq. ft	Yes
7	Hall	3'4" x 5'9"	19 sq. ft	Yes
8	Bath	7'11" x 4'11"	39 sq. ft	Yes
9	Foyer	8'3" x 17'1"	103 sq. ft	Yes
10	Laundry	7'11" x 6'7"	52 sq. ft	Yes
11	Wc	3'10" x 5'10"	21 sq. ft	Yes

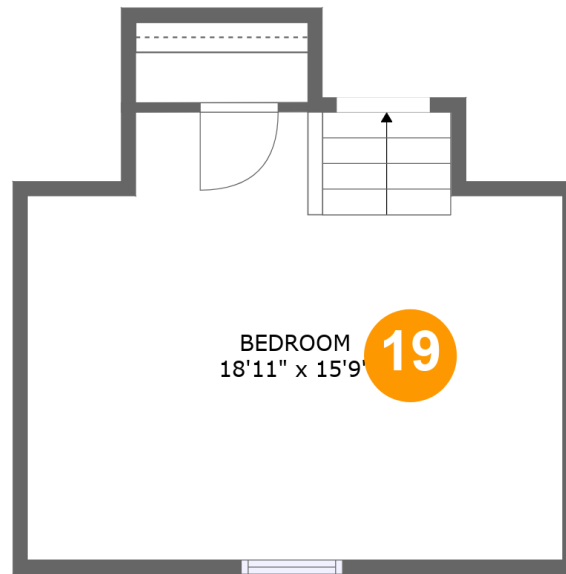
Scan captured on Sat, 05 Oct 2024 01:39:37 GMT

Information is calculated by CubiCasa technology; deemed highly reliable but not guaranteed.

502 Savannah Ridge, Mount View Estates, Murfreesboro, Rutherford County, Tennessee,

#	Room name	Dimensions	Area (sqft)	Counted as Living Area
12	Dining Room	11'9" x 13'1"	154 sq. ft	Yes
13	W.i.c.	4'9" x 5'9"	27 sq. ft	Yes
14	Primary Bedroom	13'1" x 20'0"	239 sq. ft	Yes
15	Bedroom	11'6" x 13'1"	131 sq. ft	Yes
16	Primary Bath	13'1" x 12'0"	133 sq. ft	Yes
17	Deck	23'2" x 17'8"	337 sq. ft	No
18	W.i.c.	4'4" x 5'9"	25 sq. ft	Yes

**502 Savannah Ridge, Mount View Estates,
Murfreesboro, Rutherford County, Tennessee,**



Room Dimensions

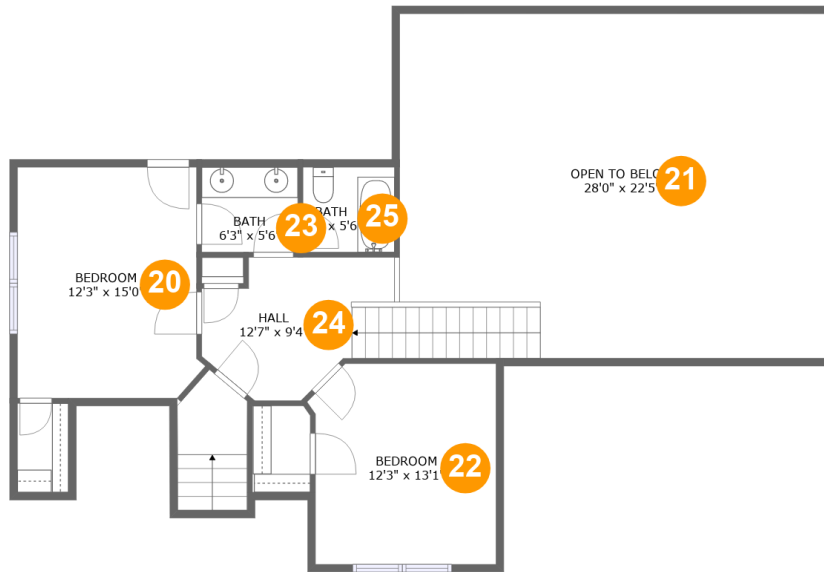
Floor 2

Total sqft: 335

Living area: 335

#	Room name	Dimensions	Area (sqft)	Counted as Living Area
19	Bedroom	18'11" x 15'9"	276 sq. ft	Yes

**502 Savannah Ridge, Mount View Estates,
Murfreesboro, Rutherford County, Tennessee,**



Room Dimensions

Floor 3

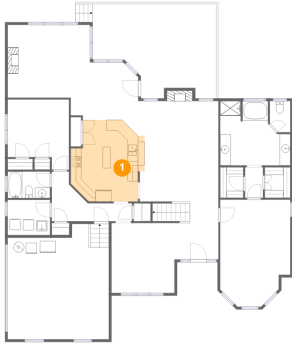
Total sqft: 1326

Living area: 691

#	Room name	Dimensions	Area (sqft)	Counted as Living Area
20	Bedroom	12'3" x 15'0"	175 sq. ft	Yes
21	Open To Below	28'0" x 22'5"	595 sq. ft	No
22	Bedroom	12'3" x 13'1"	153 sq. ft	Yes
23	Bath	6'3" x 5'6"	35 sq. ft	Yes
24	Hall	12'7" x 9'4"	129 sq. ft	Yes
25	Bath	6'0" x 5'6"	33 sq. ft	Yes

502 Savannah Ridge, Mount View Estates, Murfreesboro, Rutherford County, Tennessee,

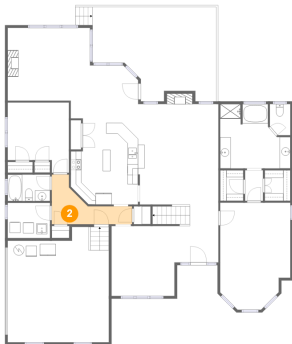
1 Floor 1 - Kitchen



Dimensions: 13'10" x 15'3"
Area: 179 sq. ft
Counted as Living Area:
Yes

Heated: Yes
Finished: Yes
Enclosed: Yes
Contiguous:
Yes
Permitted: Yes
Wet Space: No
Addition: No
Conversion: No

2 Floor 1 - Hall

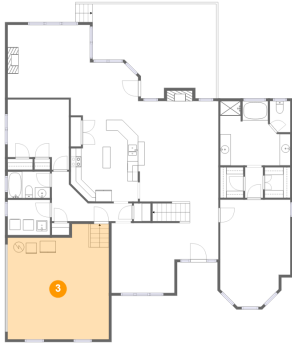


Dimensions: 15'0" x 9'3"
Area: 76 sq. ft
Counted as Living Area:
Yes

Heated: Yes
Finished: Yes
Enclosed: Yes
Contiguous:
Yes
Permitted: Yes
Wet Space: No
Addition: No
Conversion: No

502 Savannah Ridge, Mount View Estates, Murfreesboro, Rutherford County, Tennessee,

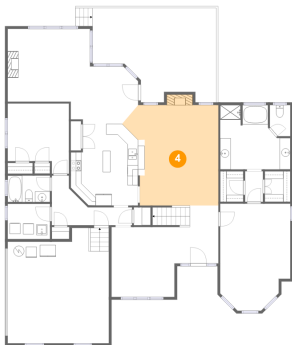
3 Floor 1 - Garage



Dimensions: 18'11" x 21'7"
Area: 377 sq. ft
Counted as Living Area: No

Heated: No
Finished: No
Enclosed: Yes
Contiguous: Yes
Permitted: Yes
Wet Space: No
Addition: No
Conversion: No

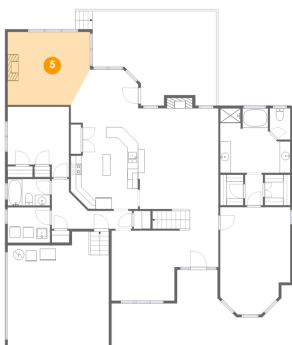
4 Floor 1 - Living Room



Dimensions: 18'0" x 18'10"
Area: 292 sq. ft
Counted as Living Area:
Yes

Heated: Yes
Finished: Yes
Enclosed: Yes
Contiguous:
Yes
Permitted: Yes
Wet Space: No
Addition: No
Conversion: No

5 Floor 1 - Family Room

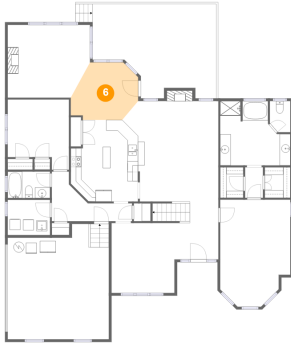


Dimensions: 15'4" x 13'7"
Area: 198 sq. ft
Counted as Living Area:
Yes

Heated: Yes
Finished: Yes
Enclosed: Yes
Contiguous:
Yes
Permitted: Yes
Wet Space: No
Addition: No
Conversion: No

502 Savannah Ridge, Mount View Estates, Murfreesboro, Rutherford County, Tennessee,

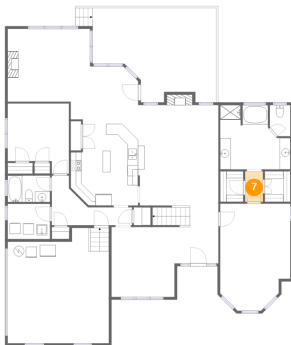
6 Floor 1 - Breakfast Nook



Dimensions: 12'7" x 10'9"
Area: 113 sq. ft
Counted as Living Area:
Yes

Heated: Yes
Finished: Yes
Enclosed: Yes
Contiguous:
Yes
Permitted: Yes
Wet Space: No
Addition: No
Conversion: No

7 Floor 1 - Hall



Dimensions: 3'4" x 5'9"
Area: 19 sq. ft
Counted as Living Area:
Yes

Heated: Yes
Finished: Yes
Enclosed: Yes
Contiguous:
Yes
Permitted: Yes
Wet Space: No
Addition: No
Conversion: No

8 Floor 1 - Bath

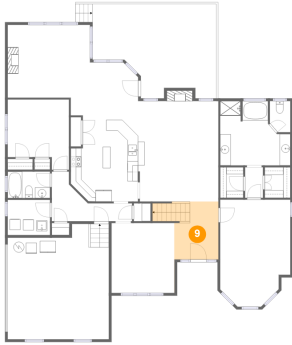


Dimensions: 7'11" x 4'11"
Area: 39 sq. ft
Counted as Living Area:
Yes

Heated: Yes
Finished: Yes
Enclosed: Yes
Contiguous:
Yes
Permitted: Yes
Wet Space: Yes
Addition: No
Conversion: No

502 Savannah Ridge, Mount View Estates, Murfreesboro, Rutherford County, Tennessee,

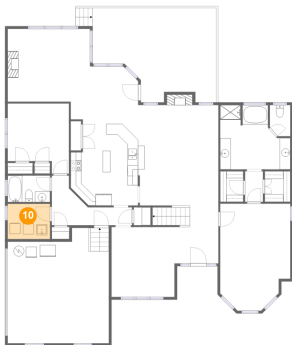
9 Floor 1 - Foyer



Dimensions: 8'3" x 17'1"
Area: 103 sq. ft
Counted as Living Area:
Yes

Heated: Yes
Finished: Yes
Enclosed: Yes
Contiguous:
Yes
Permitted: Yes
Wet Space: No
Addition: No
Conversion: No

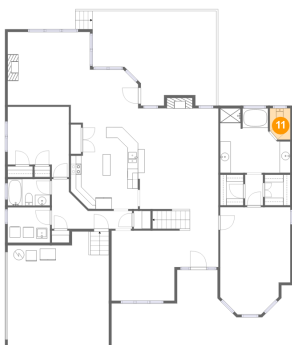
10 Floor 1 - Laundry



Dimensions: 7'11" x 6'7"
Area: 52 sq. ft
Counted as Living Area:
Yes

Heated: Yes
Finished: Yes
Enclosed: Yes
Contiguous:
Yes
Permitted: Yes
Wet Space: No
Addition: No
Conversion: No

11 Floor 1 - Wc

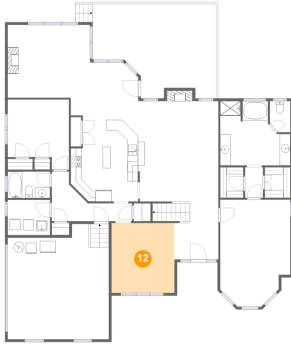


Dimensions: 3'10" x 5'10"
Area: 21 sq. ft
Counted as Living Area:
Yes

Heated: Yes
Finished: Yes
Enclosed: Yes
Contiguous:
Yes
Permitted: Yes
Wet Space: Yes
Addition: No
Conversion: No

502 Savannah Ridge, Mount View Estates, Murfreesboro, Rutherford County, Tennessee,

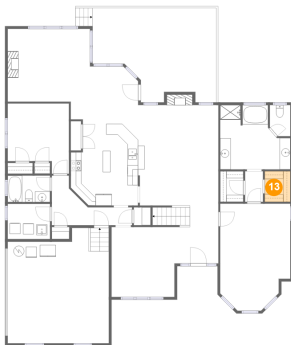
12 Floor 1 - Dining Room



Dimensions: 11'9" x 13'1"
Area: 154 sq. ft
Counted as Living Area:
Yes

Heated: Yes
Finished: Yes
Enclosed: Yes
Contiguous:
Yes
Permitted: Yes
Wet Space: No
Addition: No
Conversion: No

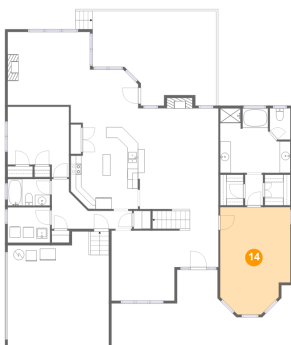
13 Floor 1 - W.i.c.



Dimensions: 4'9" x 5'9"
Area: 27 sq. ft
Counted as Living Area:
Yes

Heated: Yes
Finished: Yes
Enclosed: Yes
Contiguous:
Yes
Permitted: Yes
Wet Space: No
Addition: No
Conversion: No

14 Floor 1 - Primary Bedroom

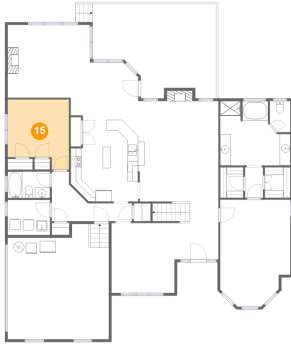


Dimensions: 13'1" x 20'0"
Area: 239 sq. ft
Counted as Living Area:
Yes

Heated: Yes
Finished: Yes
Enclosed: Yes
Contiguous:
Yes
Permitted: Yes
Wet Space: No
Addition: No
Conversion: No

502 Savannah Ridge, Mount View Estates, Murfreesboro, Rutherford County, Tennessee,

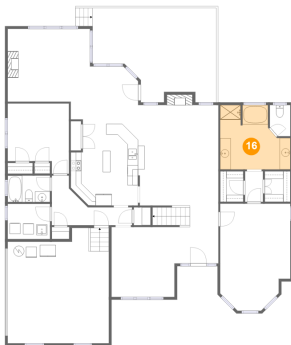
15 Floor 1 - Bedroom



Dimensions: 11'6" x 13'1"
Area: 131 sq. ft
Counted as Living Area:
Yes

Heated: Yes
Finished: Yes
Enclosed: Yes
Contiguous:
Yes
Permitted: Yes
Wet Space: No
Addition: No
Conversion: No

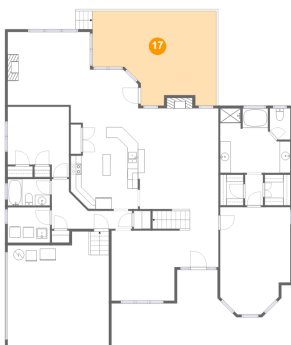
16 Floor 1 - Primary Bath



Dimensions: 13'1" x 12'0"
Area: 133 sq. ft
Counted as Living Area:
Yes

Heated: Yes
Finished: Yes
Enclosed: Yes
Contiguous:
Yes
Permitted: Yes
Wet Space: Yes
Addition: No
Conversion: No

17 Floor 1 - Deck

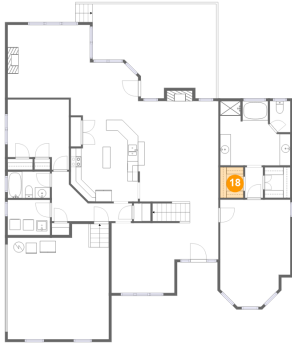


Dimensions: 23'2" x 17'8"
Area: 337 sq. ft
Counted as Living Area: No

Heated: No
Finished: Yes
Enclosed: No
Contiguous: Yes
Permitted: Yes
Wet Space: No
Addition: No
Conversion: No

502 Savannah Ridge, Mount View Estates, Murfreesboro, Rutherford County, Tennessee,

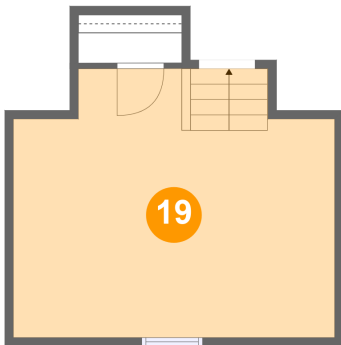
18 Floor 1 - W.i.c.



Dimensions: 4'4" x 5'9"
Area: 25 sq. ft
Counted as Living Area:
Yes

Heated: Yes
Finished: Yes
Enclosed: Yes
Contiguous:
Yes
Permitted: Yes
Wet Space: No
Addition: No
Conversion: No

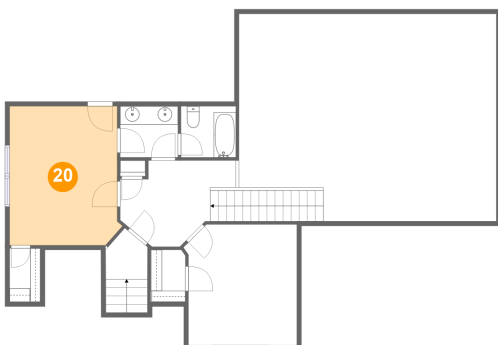
19 Floor 2 - Bedroom



Dimensions: 18'11" x 15'9"
Area: 276 sq. ft
Counted as Living Area:
Yes

Heated: Yes
Finished: Yes
Enclosed: Yes
Contiguous:
Yes
Permitted: Yes
Wet Space: No
Addition: No
Conversion: No

20 Floor 3 - Bedroom

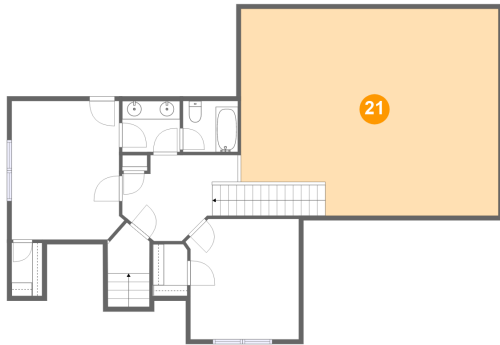


Dimensions: 12'3" x 15'0"
Area: 175 sq. ft
Counted as Living Area:
Yes

Heated: Yes
Finished: Yes
Enclosed: Yes
Contiguous:
Yes
Permitted: Yes
Wet Space: No
Addition: No
Conversion: No

502 Savannah Ridge, Mount View Estates, Murfreesboro, Rutherford County, Tennessee,

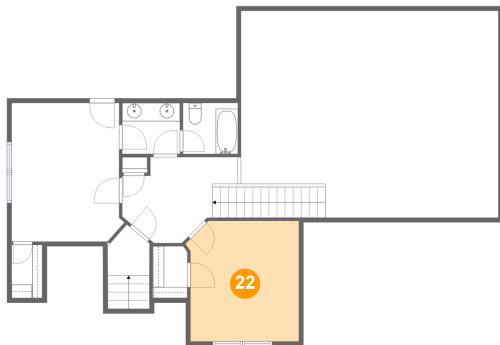
21 Floor 3 - Open To Below



Dimensions: 28'0" x 22'5"
Area: 595 sq. ft
Counted as Living Area: No

Heated: No
Finished: No
Enclosed: No
Contiguous: Yes
Permitted: No
Wet Space: No
Addition: No
Conversion: No

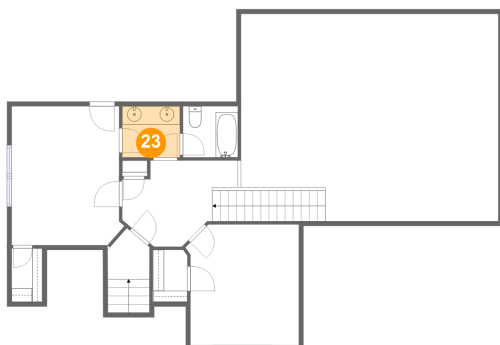
22 Floor 3 - Bedroom



Dimensions: 12'3" x 13'1"
Area: 153 sq. ft
Counted as Living Area:
Yes

Heated: Yes
Finished: Yes
Enclosed: Yes
Contiguous:
Yes
Permitted: Yes
Wet Space: No
Addition: No
Conversion: No

23 Floor 3 - Bath

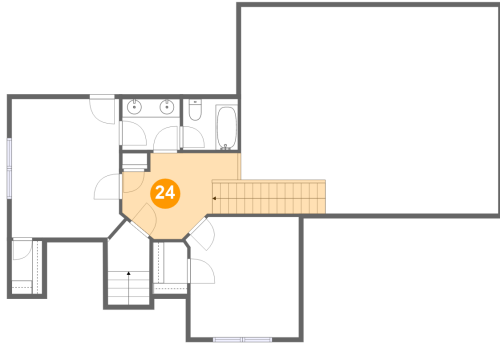


Dimensions: 6'3" x 5'6"
Area: 35 sq. ft
Counted as Living Area:
Yes

Heated: Yes
Finished: Yes
Enclosed: Yes
Contiguous:
Yes
Permitted: Yes
Wet Space: Yes
Addition: No
Conversion: No

502 Savannah Ridge, Mount View Estates, Murfreesboro, Rutherford County, Tennessee,

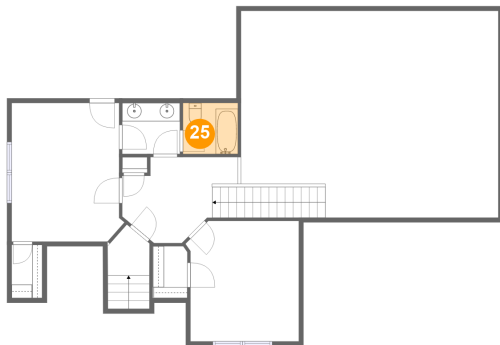
24 Floor 3 - Hall



Dimensions: 12'7" x 9'4"
Area: 129 sq. ft
Counted as Living Area:
Yes

Heated: Yes
Finished: Yes
Enclosed: Yes
Contiguous:
Yes
Permitted: Yes
Wet Space: No
Addition: No
Conversion: No

25 Floor 3 - Bath



Dimensions: 6'0" x 5'6"
Area: 33 sq. ft
Counted as Living Area:
Yes

Heated: Yes
Finished: Yes
Enclosed: Yes
Contiguous:
Yes
Permitted: Yes
Wet Space: Yes
Addition: No
Conversion: No