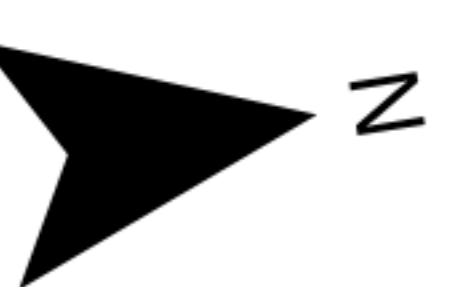
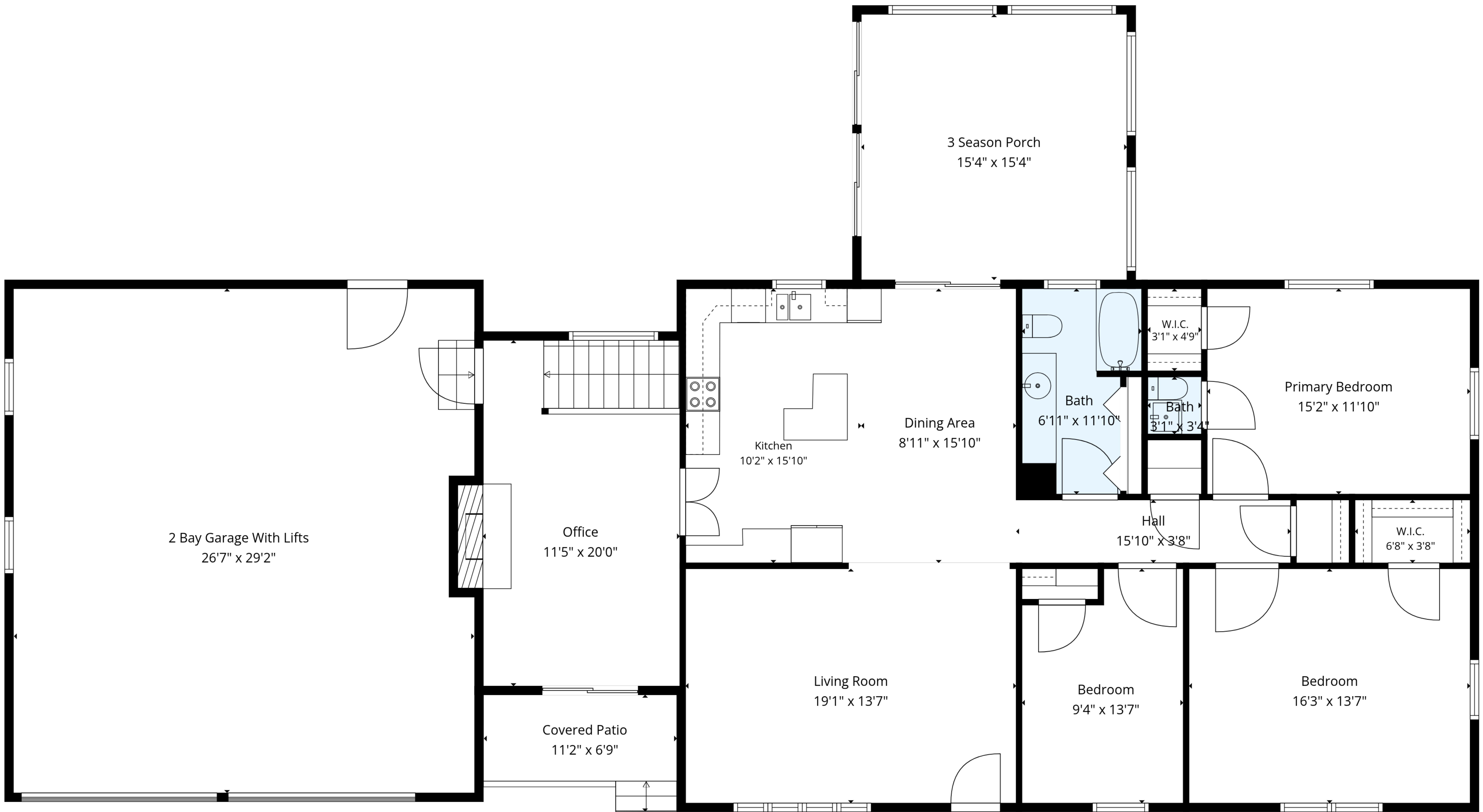


TOTAL: 2463 sq. ft

Basement: 880 sq. ft, 1st floor: 1583 sq. ft

EXCLUDED AREAS: WORKSHOP | STORAGE: 362 sq. ft, UTILITY ROOM: 54 sq. ft, 2 BAY GARAGE WITH LIFTS: 765 sq. ft,
 3 SEASON PORCH: 235 sq. ft, COVERED PATIO: 62 sq. ft, FIREPLACE: 10 sq. ft,
 WALLS: 237 sq. ft

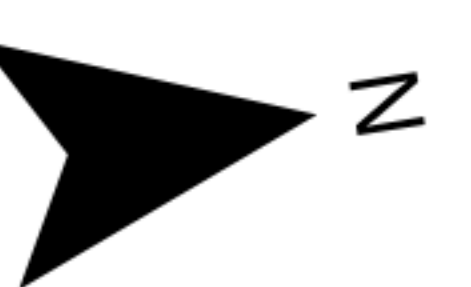


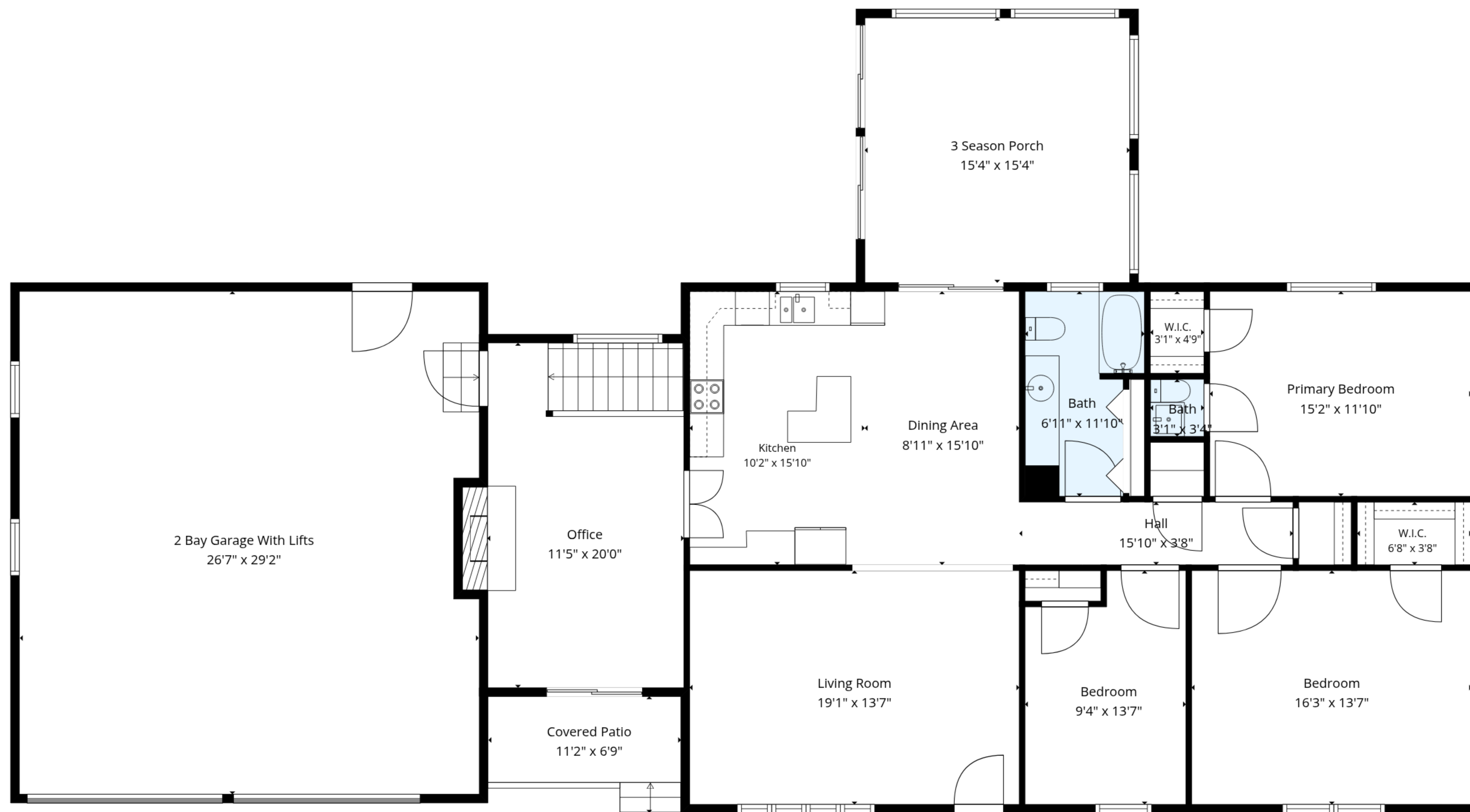


TOTAL: 2463 sq. ft

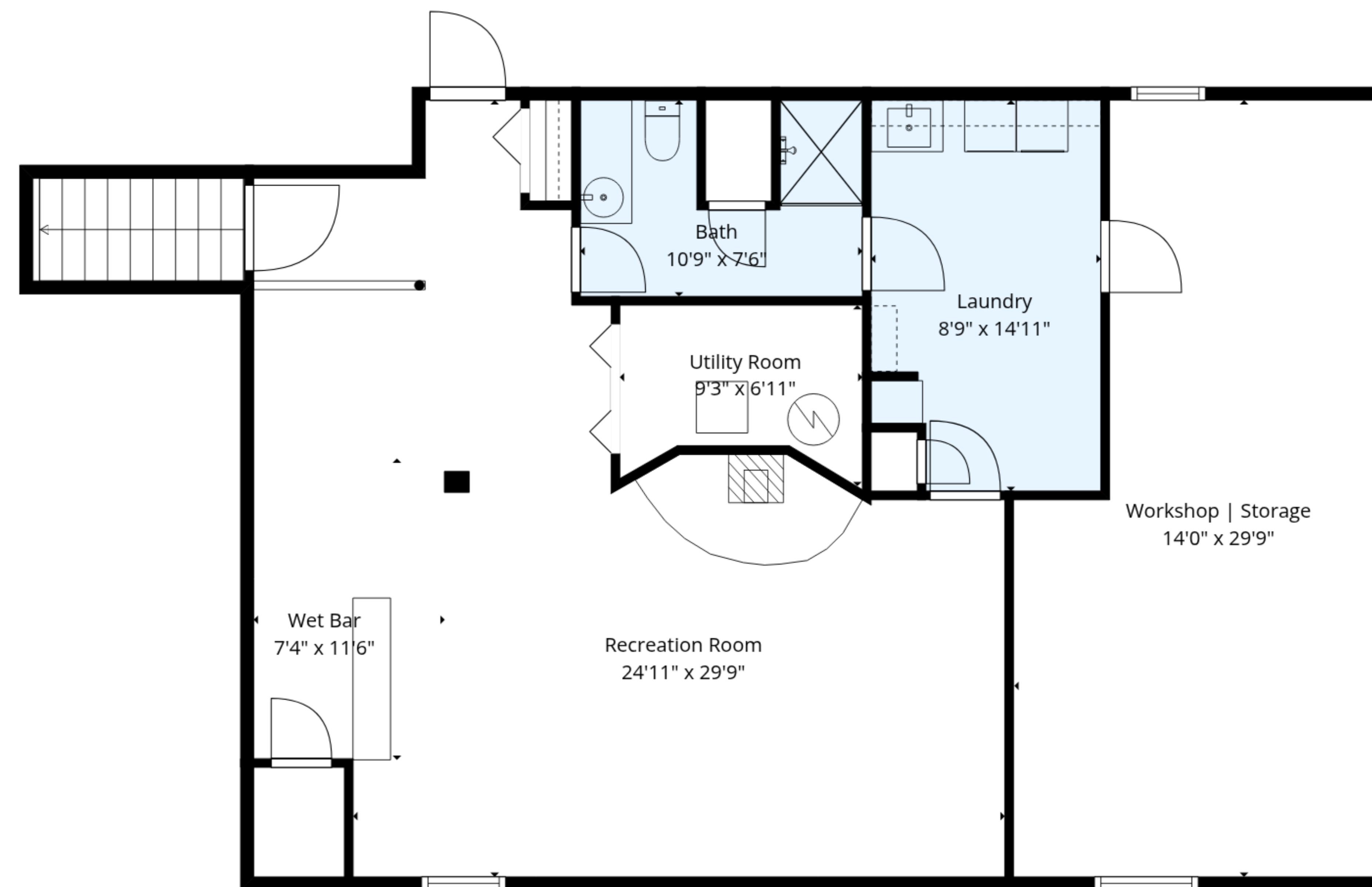
Basement: 880 sq. ft, 1st floor: 1583 sq. ft

EXCLUDED AREAS: WORKSHOP | STORAGE: 362 sq. ft, UTILITY ROOM: 54 sq. ft, 2 BAY GARAGE WITH LIFTS: 765 sq. ft,
3 SEASON PORCH: 235 sq. ft, COVERED PATIO: 62 sq. ft, FIREPLACE: 10 sq. ft,
WALLS: 237 sq. ft





1st Floor



Basement

TOTAL: 2463 sq. ft

Basement: 880 sq. ft, 1st floor: 1583 sq. ft

EXCLUDED AREAS: WORKSHOP | STORAGE: 362 sq. ft, UTILITY ROOM: 54 sq. ft, 2 BAY GARAGE WITH LIFTS: 765 sq. ft,
 3 SEASON PORCH: 235 sq. ft, COVERED PATIO: 62 sq. ft, FIREPLACE: 10 sq. ft,
 WALLS: 237 sq. ft

