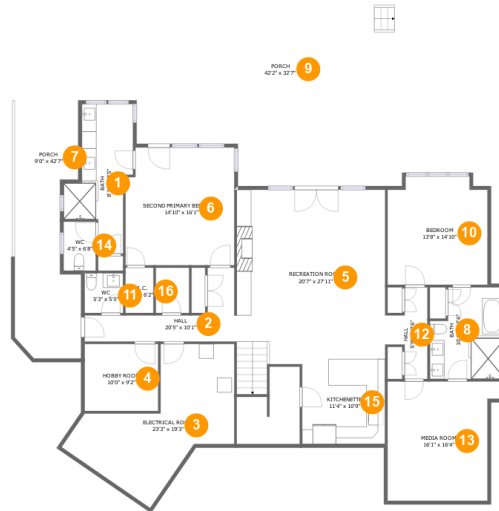


72 Saddleridge Drive, Penhook, Franklin County, Virginia, United States, 24137



Room Dimensions

Floor 1

Total sqft: 3747

Living area: 2008

#	Room name	Dimensions	Area (sqft)	Counted as Living Area
1	Bath	8'1" x 20'5"	130 sq. ft	Yes
2	Hall	20'5" x 10'1"	97 sq. ft	Yes
3	Electrical Room	23'3" x 19'3"	268 sq. ft	No
4	Hobby Room	10'0" x 9'2"	92 sq. ft	No
5	Recreation Room	20'7" x 27'11"	504 sq. ft	Yes
6	Second Primary Bedroom	14'10" x 16'1"	234 sq. ft	Yes
7	Porch	9'0" x 42'7"	321 sq. ft	No
8	Bath	10'4" x 12'6"	118 sq. ft	Yes
9	Porch	42'2" x 32'7"	949 sq. ft	No
10	Bedroom	13'8" x 14'10"	193 sq. ft	Yes

Scan captured on Wed, 26 Jun 2024 17:32:00 GMT

Information is calculated by CubiCasa technology; deemed highly reliable but not guaranteed.

**72 Saddleridge Drive, Penhook, Franklin County,
Virginia, United States, 24137**

#	Room name	Dimensions	Area (sqft)	Counted as Living Area
11	Wc	5'3" x 5'5"	29 sq. ft	Yes
12	Hall	5'9" x 12'6"	51 sq. ft	Yes
13	Media Room	16'1" x 16'4"	228 sq. ft	Yes
14	Wc	4'5" x 6'8"	29 sq. ft	Yes
15	Kitchenette	11'4" x 10'9"	121 sq. ft	Yes
16	W.i.c.	3'10" x 6'2"	24 sq. ft	Yes

72 Saddleridge Drive, Penhook, Franklin County, Virginia, United States, 24137



Room Dimensions

Floor 2

Total sqft: 4069

Living area: 2584

#	Room name	Dimensions	Area (sqft)	Counted as Living Area
17	Dining Area	17'7" x 15'11"	244 sq. ft	Yes
18	Wc	5'9" x 5'4"	31 sq. ft	Yes
19	Wc	3'9" x 6'3"	24 sq. ft	Yes
20	Laundry	10'6" x 9'2"	96 sq. ft	Yes
21	Garage	26'11" x 33'9"	910 sq. ft	No
22	Primary Bedroom	15'3" x 19'10"	267 sq. ft	Yes
23	Office	14'6" x 13'7"	198 sq. ft	Yes
24	Living Room	19'6" x 25'7"	490 sq. ft	Yes
25	Kitchen	17'7" x 14'6"	251 sq. ft	Yes
26	Foyer	11'6" x 10'1"	202 sq. ft	Yes
27	Porch	11'6" x 10'9"	124 sq. ft	No

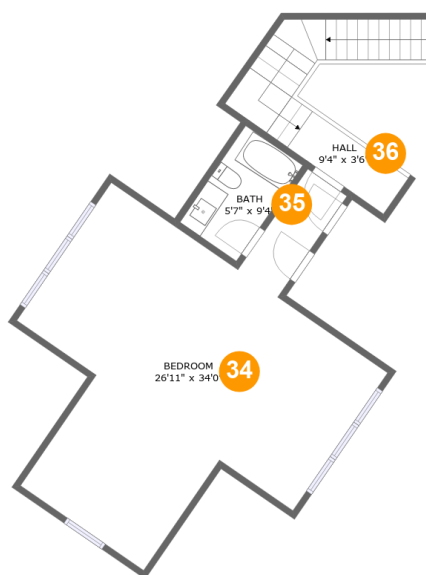
Scan captured on Wed, 26 Jun 2024 17:32:00 GMT

Information is calculated by CubiCasa technology; deemed highly reliable but not guaranteed.

**72 Saddleridge Drive, Penhook, Franklin County,
Virginia, United States, 24137**

#	Room name	Dimensions	Area (sqft)	Counted as Living Area
28	Bath	7'9" x 20'7"	139 sq. ft	Yes
29	Hall	10'7" x 12'1"	99 sq. ft	Yes
30	Hall	13'8" x 10'7"	174 sq. ft	Yes
31	Patio	6'8" x 13'1"	84 sq. ft	No
32	Deck	37'10" x 11'4"	313 sq. ft	No
33	W.i.c.	10'6" x 11'3"	104 sq. ft	Yes

72 Saddleridge Drive, Penhook, Franklin County, Virginia, United States, 24137



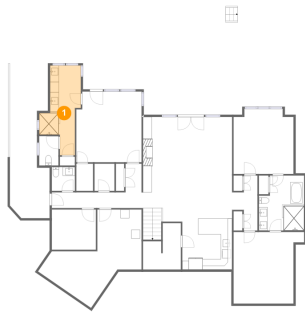
Room Dimensions

Floor 3**Total sqft: 770****Living area: 770**

#	Room name	Dimensions	Area (sqft)	Counted as Living Area
34	Bedroom	26'11" x 34'0"	528 sq. ft	Yes
35	Bath	5'7" x 9'4"	52 sq. ft	Yes
36	Hall	9'4" x 3'6"	106 sq. ft	Yes

72 Saddleridge Drive, Penhook, Franklin County, Virginia, United States, 24137

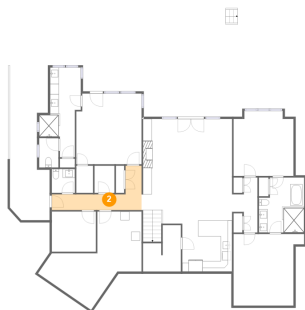
1 Floor 1 - Bath



Dimensions: 8'1" x 20'5"
Area: 130 sq. ft
Counted as Living Area:
Yes

Heated: Yes
Finished: Yes
Enclosed: Yes
Contiguous:
Yes
Permitted: Yes
Wet Space: Yes
Addition: No
Conversion: No

2 Floor 1 - Hall



Dimensions: 20'5" x 10'1"
Area: 97 sq. ft
Counted as Living Area:
Yes

Heated: Yes
Finished: Yes
Enclosed: Yes
Contiguous:
Yes
Permitted: Yes
Wet Space: No
Addition: No
Conversion: No

72 Saddleridge Drive, Penhook, Franklin County, Virginia, United States, 24137

3 Floor 1 - Electrical Room



Dimensions: 23'3" x 19'3"
Area: 268 sq. ft
Counted as Living Area: No

Heated: No
Finished: No
Enclosed: Yes
Contiguous: Yes
Permitted: Yes
Wet Space: No
Addition: No
Conversion: No

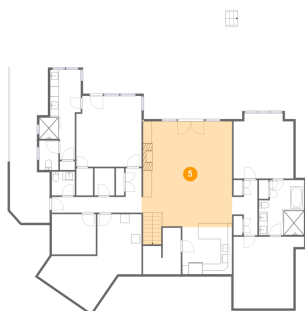
4 Floor 1 - Hobby Room



Dimensions: 10'0" x 9'2"
Area: 92 sq. ft
Counted as Living Area: No

Heated: No
Finished: No
Enclosed: No
Contiguous: No
Permitted: Yes
Wet Space: No
Addition: No
Conversion: No

5 Floor 1 - Recreation Room



Dimensions: 20'7" x 27'11"
Area: 504 sq. ft
Counted as Living Area: Yes

Heated: Yes
Finished: Yes
Enclosed: Yes
Contiguous: Yes
Permitted: Yes
Wet Space: No
Addition: No
Conversion: No

72 Saddleridge Drive, Penhook, Franklin County, Virginia, United States, 24137

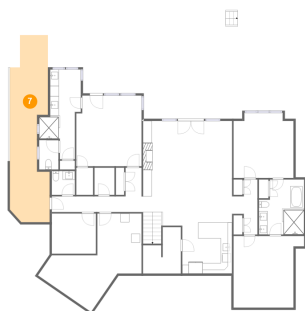
6 Floor 1 - Second Primary Bedroom



Dimensions: 14'10" x 16'1"
Area: 234 sq. ft
Counted as Living Area:
Yes

Heated: Yes
Finished: Yes
Enclosed: Yes
Contiguous:
Yes
Permitted: Yes
Wet Space: No
Addition: No
Conversion: No

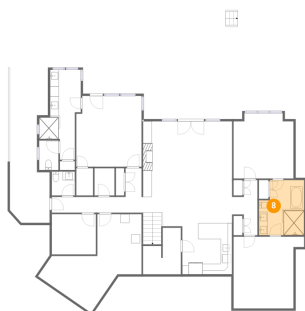
7 Floor 1 - Porch



Dimensions: 9'0" x 42'7"
Area: 321 sq. ft
Counted as Living Area: No

Heated: No
Finished: Yes
Enclosed: No
Contiguous: No
Permitted: Yes
Wet Space: No
Addition: No
Conversion: No

8 Floor 1 - Bath

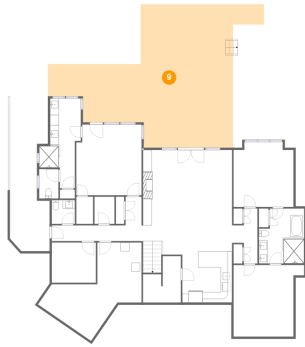


Dimensions: 10'4" x 12'6"
Area: 118 sq. ft
Counted as Living Area:
Yes

Heated: Yes
Finished: Yes
Enclosed: Yes
Contiguous:
Yes
Permitted: Yes
Wet Space: Yes
Addition: No
Conversion: No

72 Saddleridge Drive, Penhook, Franklin County, Virginia, United States, 24137

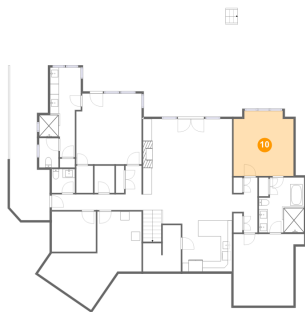
9 Floor 1 - Porch



Dimensions: 42'2" x 32'7"
Area: 949 sq. ft
Counted as Living Area: No

Heated: No
Finished: Yes
Enclosed: No
Contiguous: No
Permitted: Yes
Wet Space: No
Addition: No
Conversion: No

10 Floor 1 - Bedroom



Dimensions: 13'8" x 14'10"
Area: 193 sq. ft
Counted as Living Area:
Yes

Heated: Yes
Finished: Yes
Enclosed: Yes
Contiguous:
Yes
Permitted: Yes
Wet Space: No
Addition: No
Conversion: No

11 Floor 1 - Wc



Dimensions: 5'3" x 5'5"
Area: 29 sq. ft
Counted as Living Area:
Yes

Heated: Yes
Finished: Yes
Enclosed: Yes
Contiguous:
Yes
Permitted: Yes
Wet Space: Yes
Addition: No
Conversion: No

72 Saddleridge Drive, Penhook, Franklin County, Virginia, United States, 24137

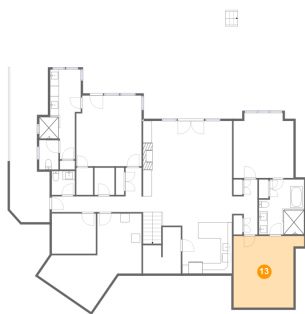
12 Floor 1 - Hall



Dimensions: 5'9" x 12'6"
Area: 51 sq. ft
Counted as Living Area:
Yes

Heated: Yes
Finished: Yes
Enclosed: Yes
Contiguous:
Yes
Permitted: Yes
Wet Space: No
Addition: No
Conversion: No

13 Floor 1 - Media Room



Dimensions: 16'1" x 16'4"
Area: 228 sq. ft
Counted as Living Area:
Yes

Heated: Yes
Finished: Yes
Enclosed: Yes
Contiguous:
Yes
Permitted: Yes
Wet Space: No
Addition: No
Conversion: No

14 Floor 1 - Wc



Dimensions: 4'5" x 6'8"
Area: 29 sq. ft
Counted as Living Area:
Yes

Heated: Yes
Finished: Yes
Enclosed: Yes
Contiguous:
Yes
Permitted: Yes
Wet Space: Yes
Addition: No
Conversion: No

72 Saddleridge Drive, Penhook, Franklin County, Virginia, United States, 24137

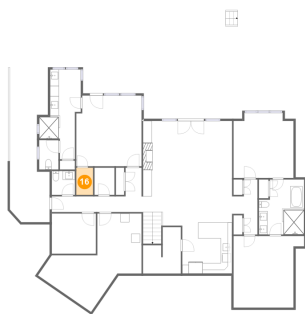
15 Floor 1 - Kitchenette



Dimensions: 11'4" x 10'9"
Area: 121 sq. ft
Counted as Living Area:
Yes

Heated: Yes
Finished: Yes
Enclosed: Yes
Contiguous:
Yes
Permitted: Yes
Wet Space: No
Addition: No
Conversion: No

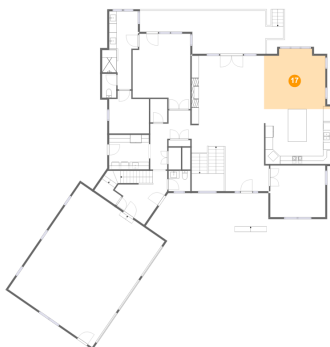
16 Floor 1 - W.i.c.



Dimensions: 3'10" x 6'2"
Area: 24 sq. ft
Counted as Living Area:
Yes

Heated: Yes
Finished: Yes
Enclosed: Yes
Contiguous:
Yes
Permitted: Yes
Wet Space: No
Addition: No
Conversion: No

17 Floor 2 - Dining Area



Dimensions: 17'7" x 15'11"
Area: 244 sq. ft
Counted as Living Area:
Yes

Heated: Yes
Finished: Yes
Enclosed: Yes
Contiguous:
Yes
Permitted: Yes
Wet Space: No
Addition: No
Conversion: No

72 Saddleridge Drive, Penhook, Franklin County, Virginia, United States, 24137

18 Floor 2 - Wc



Dimensions: 5'9" x 5'4"
Area: 31 sq. ft
Counted as Living Area:
Yes

Heated: Yes
Finished: Yes
Enclosed: Yes
Contiguous:
Yes
Permitted: Yes
Wet Space: Yes
Addition: No
Conversion: No

19 Floor 2 - Wc



Dimensions: 3'9" x 6'3"
Area: 24 sq. ft
Counted as Living Area:
Yes

Heated: Yes
Finished: Yes
Enclosed: Yes
Contiguous:
Yes
Permitted: Yes
Wet Space: Yes
Addition: No
Conversion: No

20 Floor 2 - Laundry

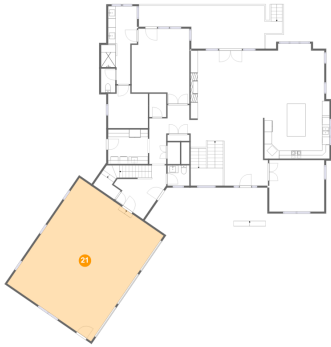


Dimensions: 10'6" x 9'2"
Area: 96 sq. ft
Counted as Living Area:
Yes

Heated: Yes
Finished: Yes
Enclosed: Yes
Contiguous:
Yes
Permitted: Yes
Wet Space: No
Addition: No
Conversion: No

72 Saddleridge Drive, Penhook, Franklin County, Virginia, United States, 24137

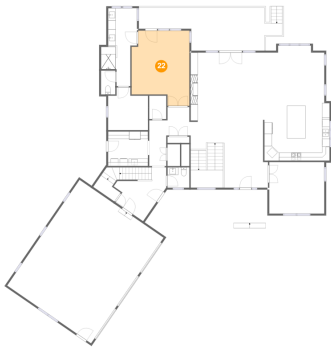
21 Floor 2 - Garage



Dimensions: 26'11" x 33'9"
Area: 910 sq. ft
Counted as Living Area: No

Heated: No
Finished: No
Enclosed: Yes
Contiguous: Yes
Permitted: Yes
Wet Space: No
Addition: No
Conversion: No

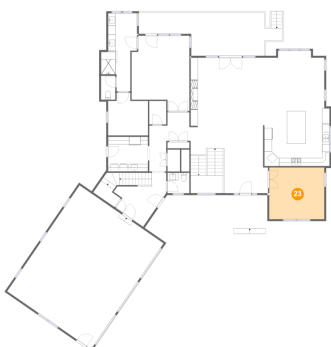
22 Floor 2 - Primary Bedroom



Dimensions: 15'3" x 19'10"
Area: 267 sq. ft
Counted as Living Area:
Yes

Heated: Yes
Finished: Yes
Enclosed: Yes
Contiguous:
Yes
Permitted: Yes
Wet Space: No
Addition: No
Conversion: No

23 Floor 2 - Office

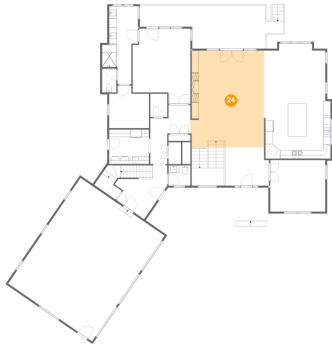


Dimensions: 14'6" x 13'7"
Area: 198 sq. ft
Counted as Living Area:
Yes

Heated: Yes
Finished: Yes
Enclosed: Yes
Contiguous:
Yes
Permitted: Yes
Wet Space: No
Addition: No
Conversion: No

72 Saddleridge Drive, Penhook, Franklin County, Virginia, United States, 24137

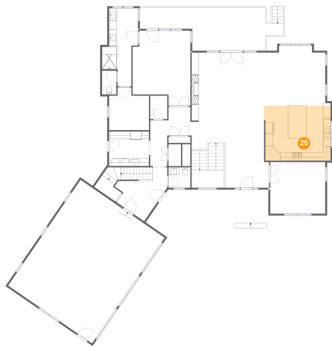
24 Floor 2 - Living Room



Dimensions: 19'6" x 25'7"
Area: 490 sq. ft
Counted as Living Area:
Yes

Heated: Yes
Finished: Yes
Enclosed: Yes
Contiguous:
Yes
Permitted: Yes
Wet Space: No
Addition: No
Conversion: No

25 Floor 2 - Kitchen



Dimensions: 17'7" x 14'6"
Area: 251 sq. ft
Counted as Living Area:
Yes

Heated: Yes
Finished: Yes
Enclosed: Yes
Contiguous:
Yes
Permitted: Yes
Wet Space: No
Addition: No
Conversion: No

26 Floor 2 - Foyer

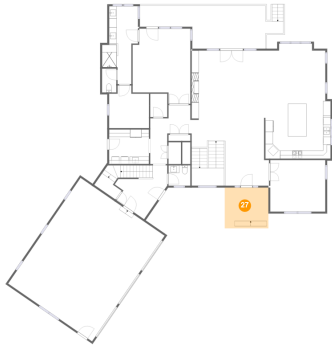


Dimensions: 11'6" x 10'1"
Area: 202 sq. ft
Counted as Living Area:
Yes

Heated: Yes
Finished: Yes
Enclosed: Yes
Contiguous:
Yes
Permitted: Yes
Wet Space: No
Addition: No
Conversion: No

72 Saddleridge Drive, Penhook, Franklin County, Virginia, United States, 24137

27 Floor 2 - Porch



Dimensions: 11'6" x 10'9"
Area: 124 sq. ft
Counted as Living Area: No

Heated: No
Finished: Yes
Enclosed: No
Contiguous: Yes
Permitted: Yes
Wet Space: No
Addition: No
Conversion: No

28 Floor 2 - Bath



Dimensions: 7'9" x 20'7"
Area: 139 sq. ft
Counted as Living Area:
Yes

Heated: Yes
Finished: Yes
Enclosed: Yes
Contiguous:
Yes
Permitted: Yes
Wet Space: Yes
Addition: No
Conversion: No

29 Floor 2 - Hall

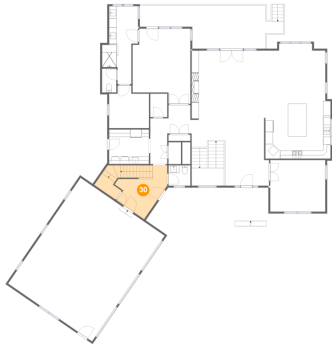


Dimensions: 10'7" x 12'1"
Area: 99 sq. ft
Counted as Living Area:
Yes

Heated: Yes
Finished: Yes
Enclosed: Yes
Contiguous:
Yes
Permitted: Yes
Wet Space: No
Addition: No
Conversion: No

72 Saddleridge Drive, Penhook, Franklin County, Virginia, United States, 24137

30 Floor 2 - Hall



Dimensions: 13'8" x 10'7"
Area: 174 sq. ft
Counted as Living Area:
Yes

Heated: Yes
Finished: Yes
Enclosed: Yes
Contiguous:
Yes
Permitted: Yes
Wet Space: No
Addition: No
Conversion: No

31 Floor 2 - Patio



Dimensions: 6'8" x 13'1"
Area: 84 sq. ft
Counted as Living Area: No

Heated: No
Finished: Yes
Enclosed: No
Contiguous: Yes
Permitted: Yes
Wet Space: No
Addition: No
Conversion: No

32 Floor 2 - Deck

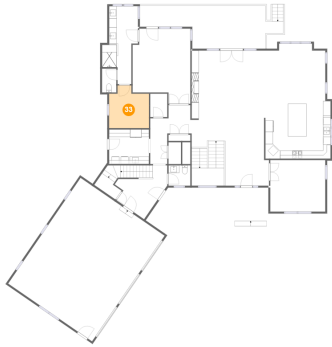


Dimensions: 37'10" x 11'4"
Area: 313 sq. ft
Counted as Living Area: No

Heated: No
Finished: Yes
Enclosed: No
Contiguous: Yes
Permitted: Yes
Wet Space: No
Addition: No
Conversion: No

72 Saddleridge Drive, Penhook, Franklin County, Virginia, United States, 24137

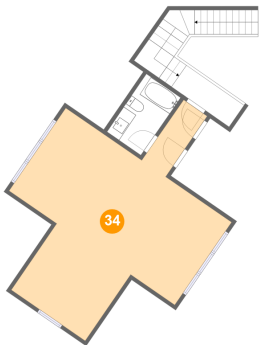
33 Floor 2 - W.i.c.



Dimensions: 10'6" x 11'3"
Area: 104 sq. ft
Counted as Living Area:
Yes

Heated: Yes
Finished: Yes
Enclosed: Yes
Contiguous:
Yes
Permitted: Yes
Wet Space: No
Addition: No
Conversion: No

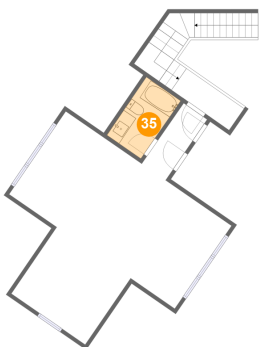
34 Floor 3 - Bedroom



Dimensions: 26'11" x 34'0"
Area: 528 sq. ft
Counted as Living Area:
Yes

Heated: Yes
Finished: Yes
Enclosed: Yes
Contiguous:
Yes
Permitted: Yes
Wet Space: No
Addition: No
Conversion: No

35 Floor 3 - Bath

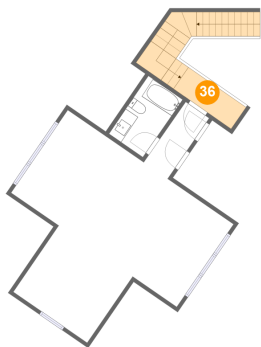


Dimensions: 5'7" x 9'4"
Area: 52 sq. ft
Counted as Living Area:
Yes

Heated: Yes
Finished: Yes
Enclosed: Yes
Contiguous:
Yes
Permitted: Yes
Wet Space: Yes
Addition: No
Conversion: No

72 Saddleridge Drive, Penhook, Franklin County, Virginia, United States, 24137

36 Floor 3 - Hall



Dimensions: 9'4" x 3'6"
Area: 106 sq. ft
Counted as Living Area:
Yes

Heated: Yes
Finished: Yes
Enclosed: Yes
Contiguous:
Yes
Permitted: Yes
Wet Space: No
Addition: No
Conversion: No