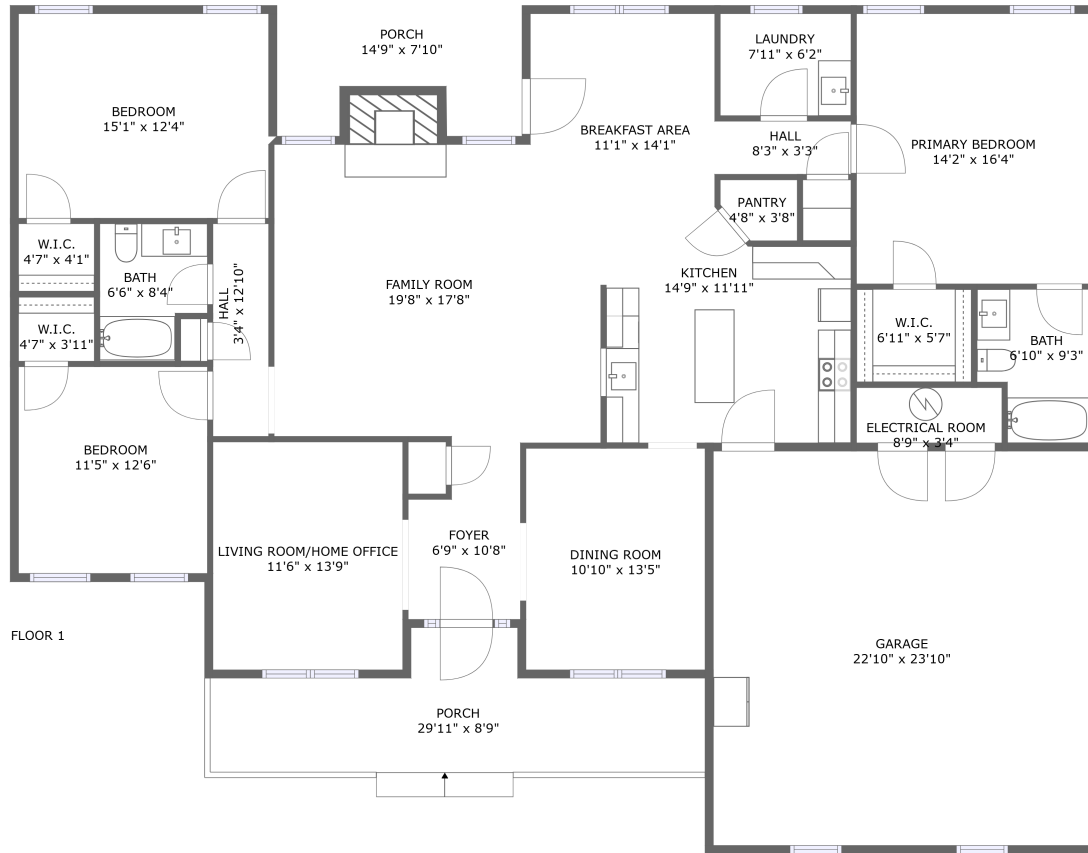



177 Pine Hills Drive, Fincastle, Virginia, United States



Property summary


 **1** Garages

 **3** Bedrooms

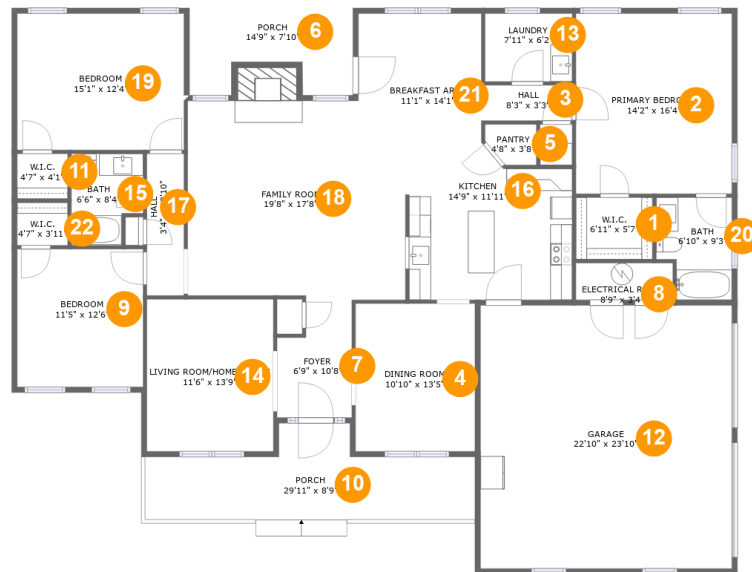
 **2** Bathrooms

 **0** Half baths

 **1** Floors

 **2,116** Gross living area sqft

 **3,029** Total sqft

177 Pine Hills Drive, Fincastle, Virginia, United States**Room dimensions**

Floor 1

Total sqft: 3029

Living area: 2116

#		Dimensions	sqft	Counted as living area
1	Cl	6'11" x 5'7"	39 sq. ft	Yes
2	Bedroom	14'2" x 16'4"	231 sq. ft	Yes
3	Hall	8'3" x 3'3"	26 sq. ft	Yes
4	Dining Room	10'10" x 13'5"	145 sq. ft	Yes
5	Pantry	4'8" x 3'8"	15 sq. ft	Yes
6	Outdoor	14'9" x 7'10"	98 sq. ft	No
7	Entry	6'9" x 10'8"	63 sq. ft	Yes
8	Room	8'9" x 3'4"	29 sq. ft	No
9	Bedroom	11'5" x 12'6"	143 sq. ft	Yes
10	Outdoor	29'11" x 8'9"	190 sq. ft	No

177 Pine Hills Drive, Fincastle, Virginia, United States

#		Dimensions	sqft	Counted as living area
11	Cl	4'7" x 4'1"	19 sq. ft	Yes
12	Garage	22'10" x 23'10"	543 sq. ft	No
13	Utility	7'11" x 6'2"	49 sq. ft	Yes
14	Living ROOM/HOME Office	11'6" x 13'9"	158 sq. ft	Yes
15	Bath	6'6" x 8'4"	48 sq. ft	Yes
16	Kitchen	14'9" x 11'11"	180 sq. ft	Yes
17	Hall	3'4" x 12'10"	43 sq. ft	Yes
18	Living Room	19'8" x 17'8"	350 sq. ft	Yes
19	Bedroom	15'1" x 12'4"	187 sq. ft	Yes
20	Bath	6'10" x 9'3"	57 sq. ft	Yes
21	Breakfast Area	11'1" x 14'1"	150 sq. ft	Yes
22	Cl	4'7" x 3'11"	18 sq. ft	Yes

177 Pine Hills Drive, Fincastle, Virginia, United States

1 Floor 1 - Cl



Dimensions: 6'11" x 5'7"
Area: 39 sq. ft
Counted as living area: Yes

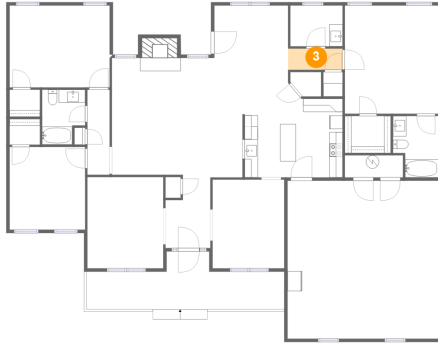
Heated: Yes
Finished: Yes
Enclosed: Yes
Contiguous: Yes
Permitted: Yes
Wet space: No
Addition: No
Conversion: No

2 Floor 1 - Bedroom



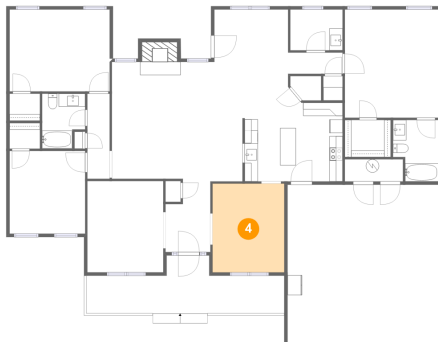
Dimensions: 14'2" x 16'4"
Area: 231 sq. ft
Counted as living area: Yes

Heated: Yes
Finished: Yes
Enclosed: Yes
Contiguous: Yes
Permitted: Yes
Wet space: No
Addition: No
Conversion: No

177 Pine Hills Drive, Fincastle, Virginia, United States**3 Floor 1 - Hall**

Dimensions: 8'3" x 3'3"
Area: 26 sq. ft
Counted as living area: Yes

Heated: Yes
Finished: Yes
Enclosed: Yes
Contiguous: Yes
Permitted: Yes
Wet space: No
Addition: No
Conversion: No

4 Floor 1 - Dining Room

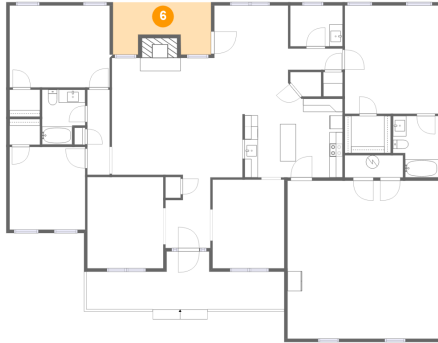
Dimensions: 10'10" x 13'5"
Area: 145 sq. ft
Counted as living area: Yes

Heated: Yes
Finished: Yes
Enclosed: Yes
Contiguous: Yes
Permitted: Yes
Wet space: No
Addition: No
Conversion: No

5 Floor 1 - Pantry

Dimensions: 4'8" x 3'8"
Area: 15 sq. ft
Counted as living area: Yes

Heated: Yes
Finished: Yes
Enclosed: Yes
Contiguous: Yes
Permitted: Yes
Wet space: No
Addition: No
Conversion: No

177 Pine Hills Drive, Fincastle, Virginia, United States**6 Floor 1 - Outdoor**

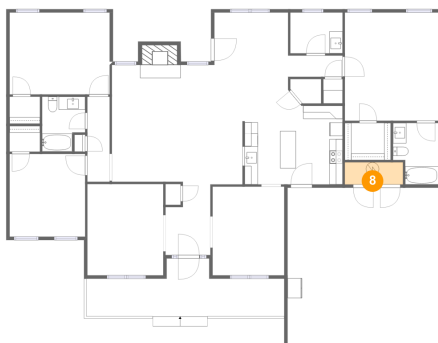
Dimensions: 14'9" x 7'10"
Area: 98 sq. ft
Counted as living area: No

Heated: No
Finished: Yes
Enclosed: No
Contiguous: Yes
Permitted: Yes
Wet space: No
Addition: No
Conversion: No

7 Floor 1 - Entry

Dimensions: 6'9" x 10'8"
Area: 63 sq. ft
Counted as living area: Yes

Heated: Yes
Finished: Yes
Enclosed: Yes
Contiguous: Yes
Permitted: Yes
Wet space: No
Addition: No
Conversion: No

8 Floor 1 - Room

Dimensions: 8'9" x 3'4"
Area: 29 sq. ft
Counted as living area: No

Heated: No
Finished: No
Enclosed: Yes
Contiguous: Yes
Permitted: Yes
Wet space: No
Addition: No
Conversion: No

177 Pine Hills Drive, Fincastle, Virginia, United States**9 Floor 1 - Bedroom**

Dimensions: 11'5" x 12'6"
Area: 143 sq. ft
Counted as living area: Yes

Heated: Yes
Finished: Yes
Enclosed: Yes
Contiguous: Yes
Permitted: Yes
Wet space: No
Addition: No
Conversion: No

10 Floor 1 - Outdoor

Dimensions: 29'11" x 8'9"
Area: 190 sq. ft
Counted as living area: No

Heated: No
Finished: Yes
Enclosed: No
Contiguous: Yes
Permitted: Yes
Wet space: No
Addition: No
Conversion: No

11 Floor 1 - Cl

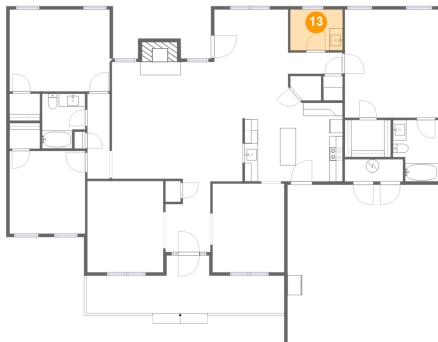
Dimensions: 4'7" x 4'1"
Area: 19 sq. ft
Counted as living area: Yes

Heated: Yes
Finished: Yes
Enclosed: Yes
Contiguous: Yes
Permitted: Yes
Wet space: No
Addition: No
Conversion: No

177 Pine Hills Drive, Fincastle, Virginia, United States**12 Floor 1 - Garage**

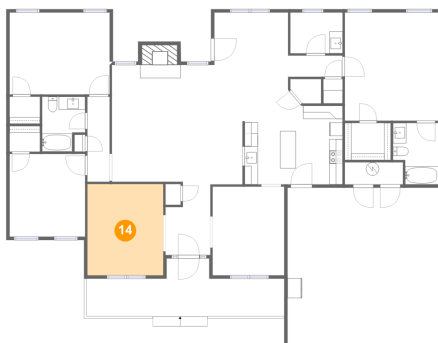
Dimensions: 22'10" x 23'10"
Area: 543 sq. ft
Counted as living area: No

Heated: No
Finished: No
Enclosed: Yes
Contiguous: Yes
Permitted: Yes
Wet space: No
Addition: No
Conversion: No

13 Floor 1 - Utility

Dimensions: 7'11" x 6'2"
Area: 49 sq. ft
Counted as living area: Yes

Heated: Yes
Finished: Yes
Enclosed: Yes
Contiguous: Yes
Permitted: Yes
Wet space: No
Addition: No
Conversion: No

14 Floor 1 - Living ROOM/HOME Office

Dimensions: 11'6" x 13'9"
Area: 158 sq. ft
Counted as living area: Yes

Heated: Yes
Finished: Yes
Enclosed: Yes
Contiguous: Yes
Permitted: Yes
Wet space: No
Addition: No
Conversion: No

177 Pine Hills Drive, Fincastle, Virginia, United States**15 Floor 1 - Bath**

Dimensions: 6'6" x 8'4"
Area: 48 sq. ft
Counted as living area: Yes

Heated: Yes
Finished: Yes
Enclosed: Yes
Contiguous: Yes
Permitted: Yes
Wet space: Yes
Addition: No
Conversion: No

16 Floor 1 - Kitchen

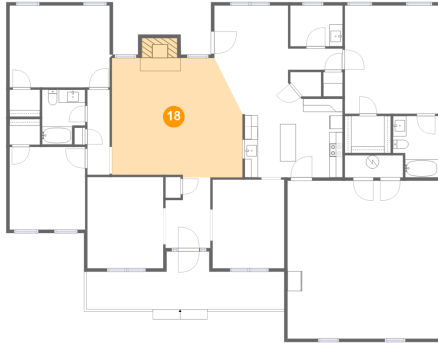
Dimensions: 14'9" x 11'11"
Area: 180 sq. ft
Counted as living area: Yes

Heated: Yes
Finished: Yes
Enclosed: Yes
Contiguous: Yes
Permitted: Yes
Wet space: No
Addition: No
Conversion: No

17 Floor 1 - Hall

Dimensions: 3'4" x 12'10"
Area: 43 sq. ft
Counted as living area: Yes

Heated: Yes
Finished: Yes
Enclosed: Yes
Contiguous: Yes
Permitted: Yes
Wet space: No
Addition: No
Conversion: No

177 Pine Hills Drive, Fincastle, Virginia, United States**18 Floor 1 - Living Room**

Dimensions: 19'8" x 17'8"
Area: 350 sq. ft
Counted as living area: Yes

Heated: Yes
Finished: Yes
Enclosed: Yes
Contiguous: Yes
Permitted: Yes
Wet space: No
Addition: No
Conversion: No

19 Floor 1 - Bedroom

Dimensions: 15'1" x 12'4"
Area: 187 sq. ft
Counted as living area: Yes

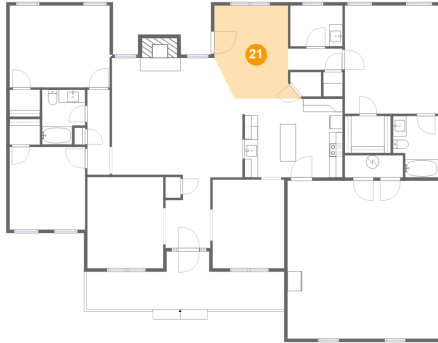
Heated: Yes
Finished: Yes
Enclosed: Yes
Contiguous: Yes
Permitted: Yes
Wet space: No
Addition: No
Conversion: No

20 Floor 1 - Bath

Dimensions: 6'10" x 9'3"
Area: 57 sq. ft
Counted as living area: Yes

Heated: Yes
Finished: Yes
Enclosed: Yes
Contiguous: Yes
Permitted: Yes
Wet space: Yes
Addition: No
Conversion: No

21 Floor 1 - Breakfast Area



Dimensions: 11'1" x 14'1"
Area: 150 sq. ft
Counted as living area: Yes

Heated: Yes
Finished: Yes
Enclosed: Yes
Contiguous: Yes
Permitted: Yes
Wet space: No
Addition: No
Conversion: No

22 Floor 1 - Cl



Dimensions: 4'7" x 3'11"
Area: 18 sq. ft
Counted as living area: Yes

Heated: Yes
Finished: Yes
Enclosed: Yes
Contiguous: Yes
Permitted: Yes
Wet space: No
Addition: No
Conversion: No