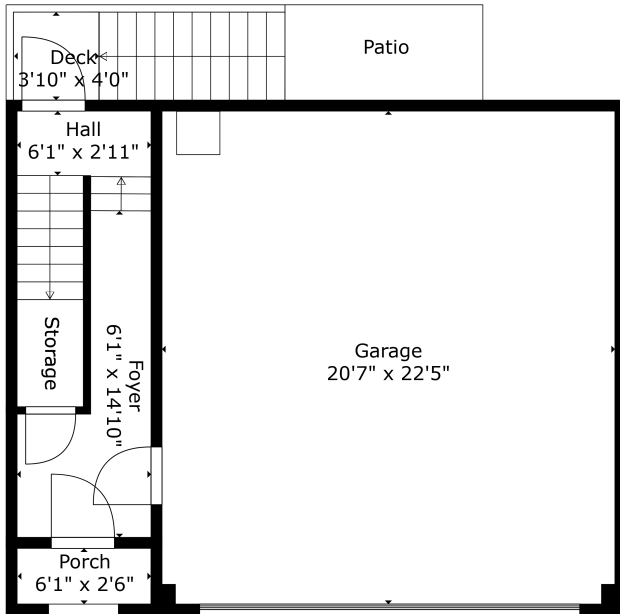
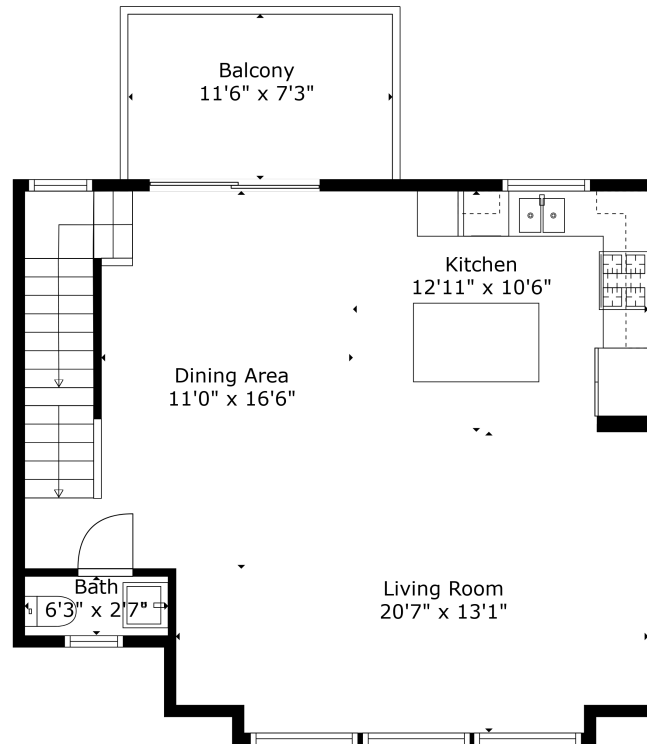


51-9688 162a St Surrey, BC

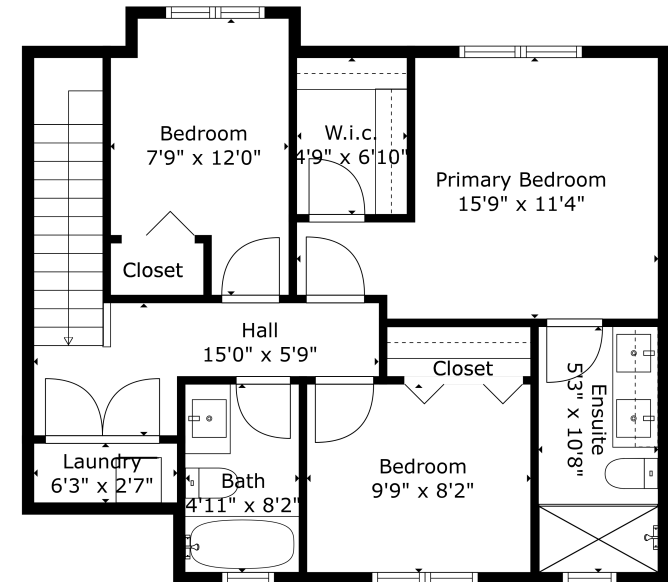
MAIN FLOOR	689 SQ.FT.
UPPER FLOOR	680 SQ.FT.
LOWER FLOOR	159 SQ.FT.
TOTAL LIVING AREA	1,528 SQ.FT.
BALCONY	83 SQ.FT.
GARAGE	462 SQ.FT.
TOTAL	2,073 SQ.FT.



LOWER FLOOR
159 SQ.FT.
CEILING HEIGHT 8'0"



MAIN FLOOR
689 SQ.FT.
CEILING HEIGHT 9'0"



UPPER FLOOR
680 SQ.FT.
CEILING HEIGHT 8'0"

