

52063 Woodridge Dr, South Bend, IN, US



Property summary

 **1** Garages


 **4** Bedrooms

 **2** Bathrooms

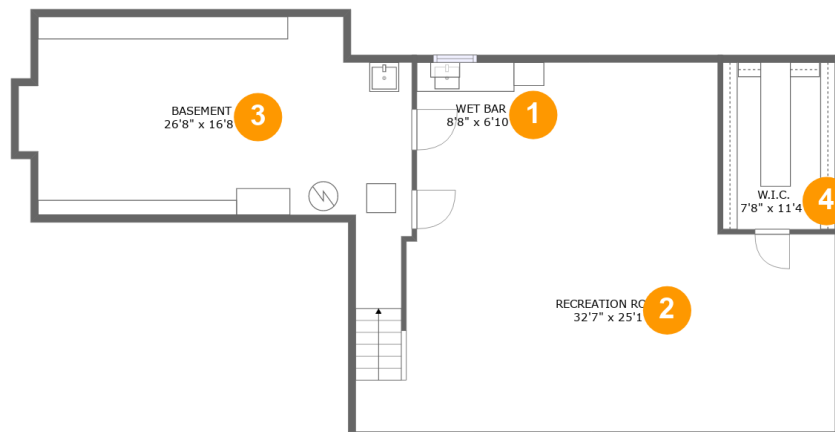
 **1** Half baths

 **3** Floors

 **3,008** Gross living area sqft

 **3,981** Total sqft

52063 Woodridge Dr, South Bend, IN, US

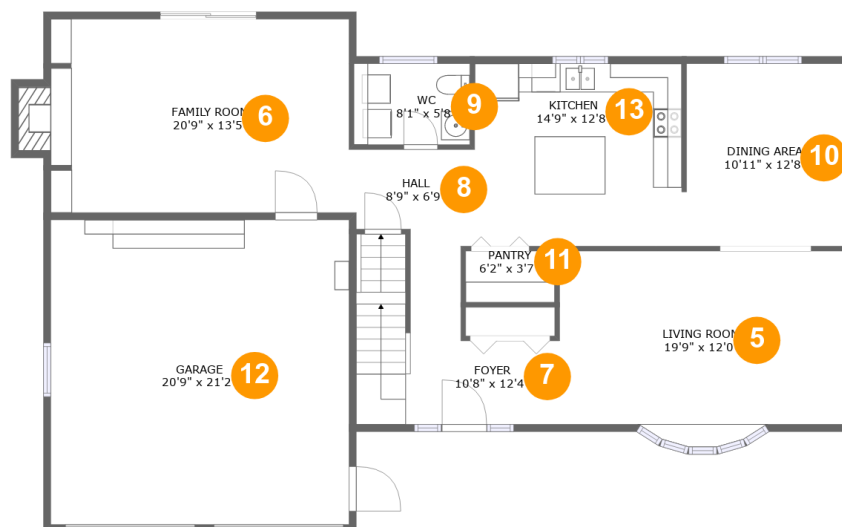


Room dimensions

Floor 1

Total sqft: 1193 Living area: 803

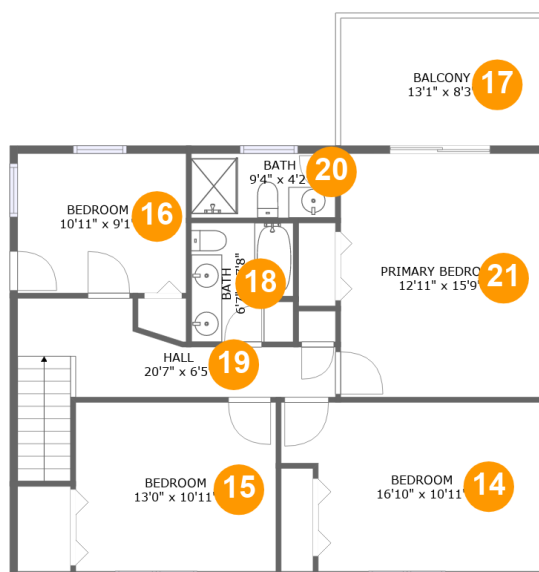
| # | | Dimensions | sqft | Counted as living area |
|---|-----------------|---------------|------------|------------------------|
| 1 | Bar | 8'8" x 6'10" | 59 sq. ft | Yes |
| 2 | Recreation Room | 32'7" x 25'1" | 597 sq. ft | Yes |
| 3 | Basement | 26'8" x 16'8" | 353 sq. ft | No |
| 4 | Cl | 7'8" x 11'4" | 86 sq. ft | Yes |

52063 Woodridge Dr, South Bend, IN, US**Room dimensions**

Floor 2

Total sqft: 1702 Living area: 1227

| # | | Dimensions | sqft | Counted as living area |
|----|-------------|----------------|------------|------------------------|
| 5 | Living Room | 19'9" x 12'0" | 247 sq. ft | Yes |
| 6 | Living Room | 20'9" x 13'5" | 288 sq. ft | Yes |
| 7 | Entry | 10'8" x 12'4" | 131 sq. ft | Yes |
| 8 | Hall | 8'9" x 6'9" | 53 sq. ft | Yes |
| 9 | Bath | 8'1" x 5'8" | 45 sq. ft | Yes |
| 10 | Dining Room | 10'11" x 12'8" | 138 sq. ft | Yes |
| 11 | Pantry | 6'2" x 3'7" | 22 sq. ft | Yes |
| 12 | Garage | 20'9" x 21'2" | 439 sq. ft | No |
| 13 | Kitchen | 14'9" x 12'8" | 184 sq. ft | Yes |

52063 Woodridge Dr, South Bend, IN, US**Room dimensions**

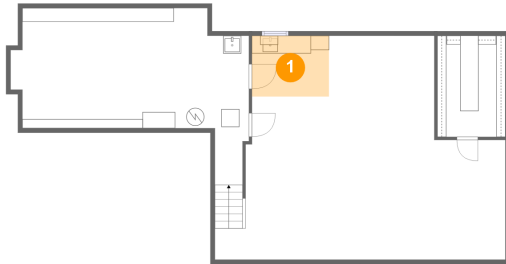
Floor 3

Total sqft: 1086 Living area: 978

| # | | Dimensions | sqft | Counted as living area |
|----|---------|-----------------|------------|------------------------|
| 14 | Bedroom | 16'10" x 10'11" | 167 sq. ft | Yes |
| 15 | Bedroom | 13'0" x 10'11" | 142 sq. ft | Yes |
| 16 | Bedroom | 10'11" x 9'1" | 99 sq. ft | Yes |
| 17 | Outdoor | 13'1" x 8'3" | 108 sq. ft | No |
| 18 | Bath | 6'7" x 7'8" | 50 sq. ft | Yes |
| 19 | Hall | 20'7" x 6'5" | 111 sq. ft | Yes |
| 20 | Bath | 9'4" x 4'2" | 39 sq. ft | Yes |
| 21 | Bedroom | 12'11" x 15'9" | 204 sq. ft | Yes |

52063 Woodridge Dr, South Bend, IN, US

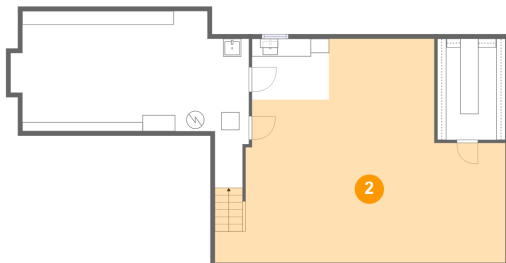
1 Floor 1 - Bar



Dimensions: 8'8" x 6'10"
Area: 59 sq. ft
Counted as living area: Yes

Heated: Yes
Finished: Yes
Enclosed: Yes
Contiguous: Yes
Permitted: Yes
Wet space: No
Addition: No
Conversion: No

2 Floor 1 - Recreation Room

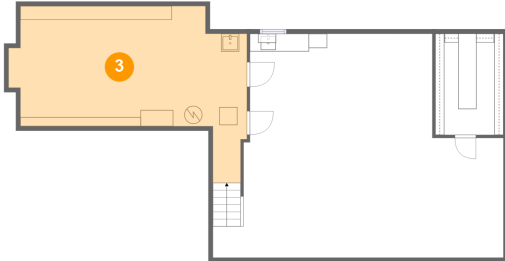


Dimensions: 32'7" x 25'1"
Area: 597 sq. ft
Counted as living area: Yes

Heated: Yes
Finished: Yes
Enclosed: Yes
Contiguous: Yes
Permitted: Yes
Wet space: No
Addition: No
Conversion: No

52063 Woodridge Dr, South Bend, IN, US

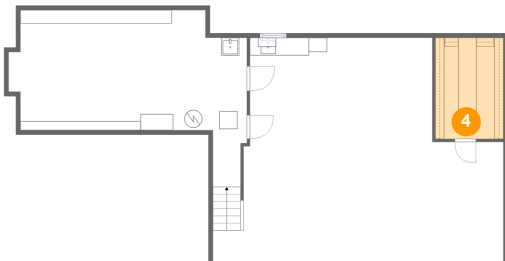
3 Floor 1 - Basement



Dimensions: 26'8" x 16'8"
Area: 353 sq. ft
Counted as living area: No

Heated: Yes
Finished: No
Enclosed: Yes
Contiguous: Yes
Permitted: Yes
Wet space: No
Addition: No
Conversion: No

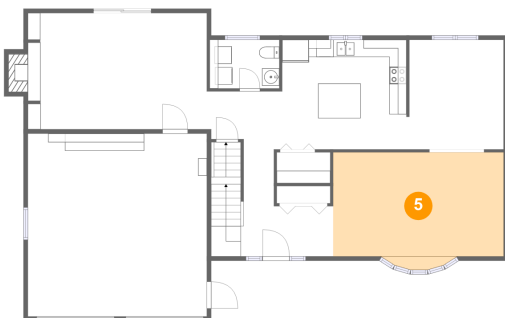
4 Floor 1 - Cl



Dimensions: 7'8" x 11'4"
Area: 86 sq. ft
Counted as living area: Yes

Heated: Yes
Finished: Yes
Enclosed: Yes
Contiguous: Yes
Permitted: Yes
Wet space: No
Addition: No
Conversion: No

5 Floor 2 - Living Room

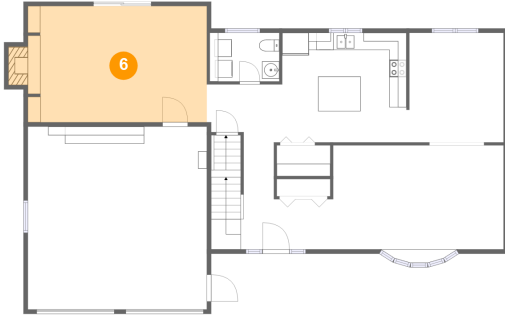


Dimensions: 19'9" x 12'0"
Area: 247 sq. ft
Counted as living area: Yes

Heated: Yes
Finished: Yes
Enclosed: Yes
Contiguous: Yes
Permitted: Yes
Wet space: No
Addition: No
Conversion: No

52063 Woodridge Dr, South Bend, IN, US

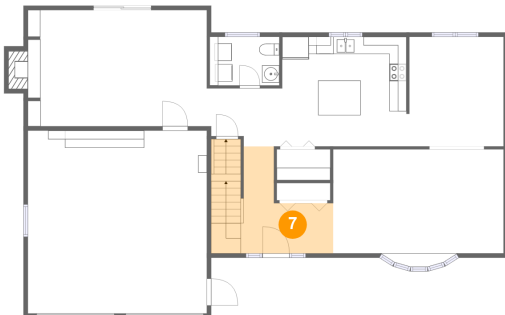
6 Floor 2 - Living Room



Dimensions: 20'9" x 13'5"
Area: 288 sq. ft
Counted as living area: Yes

Heated: Yes
Finished: Yes
Enclosed: Yes
Contiguous: Yes
Permitted: Yes
Wet space: No
Addition: No
Conversion: No

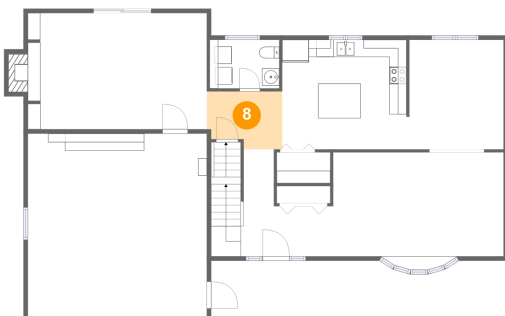
7 Floor 2 - Entry



Dimensions: 10'8" x 12'4"
Area: 131 sq. ft
Counted as living area: Yes

Heated: Yes
Finished: Yes
Enclosed: Yes
Contiguous: Yes
Permitted: Yes
Wet space: No
Addition: No
Conversion: No

8 Floor 2 - Hall

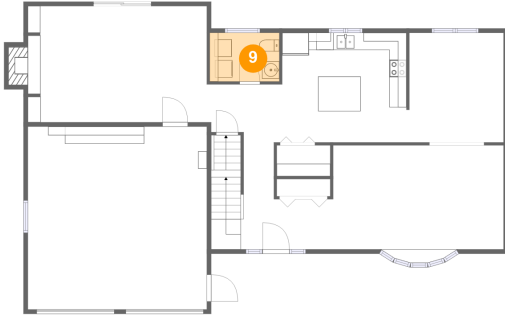


Dimensions: 8'9" x 6'9"
Area: 53 sq. ft
Counted as living area: Yes

Heated: Yes
Finished: Yes
Enclosed: Yes
Contiguous: Yes
Permitted: Yes
Wet space: No
Addition: No
Conversion: No

52063 Woodridge Dr, South Bend, IN, US

9 Floor 2 - Bath



Dimensions: 8'1" x 5'8"
Area: 45 sq. ft
Counted as living area: Yes

Heated: Yes
Finished: Yes
Enclosed: Yes
Contiguous: Yes
Permitted: Yes
Wet space: Yes
Addition: No
Conversion: No

10 Floor 2 - Dining Room



Dimensions: 10'11" x 12'8"
Area: 138 sq. ft
Counted as living area: Yes

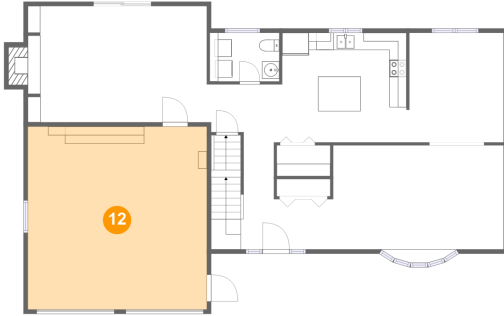
Heated: Yes
Finished: Yes
Enclosed: Yes
Contiguous: Yes
Permitted: Yes
Wet space: No
Addition: No
Conversion: No

11 Floor 2 - Pantry



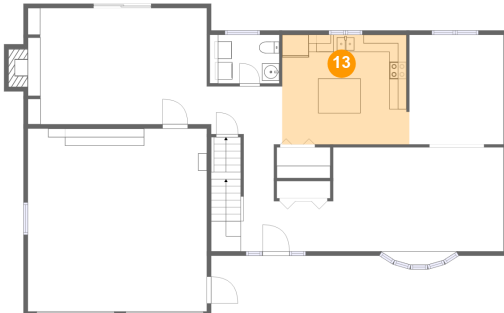
Dimensions: 6'2" x 3'7"
Area: 22 sq. ft
Counted as living area: Yes

Heated: Yes
Finished: Yes
Enclosed: Yes
Contiguous: Yes
Permitted: Yes
Wet space: No
Addition: No
Conversion: No

52063 Woodridge Dr, South Bend, IN, US**12 Floor 2 - Garage**

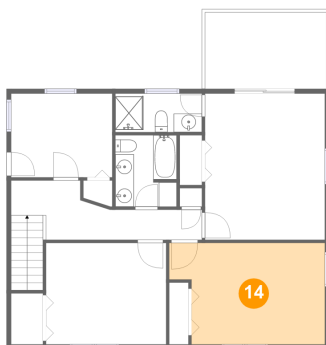
Dimensions: 20'9" x 21'2"
Area: 439 sq. ft
Counted as living area: No

Heated: No
Finished: No
Enclosed: Yes
Contiguous: Yes
Permitted: Yes
Wet space: No
Addition: No
Conversion: No

13 Floor 2 - Kitchen

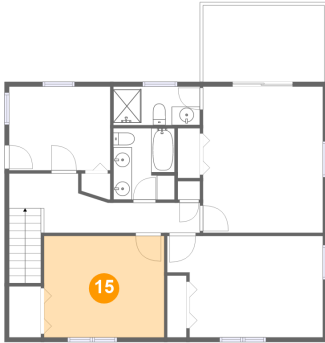
Dimensions: 14'9" x 12'8"
Area: 184 sq. ft
Counted as living area: Yes

Heated: Yes
Finished: Yes
Enclosed: Yes
Contiguous: Yes
Permitted: Yes
Wet space: No
Addition: No
Conversion: No

14 Floor 3 - Bedroom

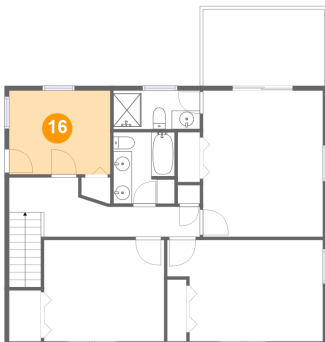
Dimensions: 16'10" x 10'11"
Area: 167 sq. ft
Counted as living area: Yes

Heated: Yes
Finished: Yes
Enclosed: Yes
Contiguous: Yes
Permitted: Yes
Wet space: No
Addition: No
Conversion: No

52063 Woodridge Dr, South Bend, IN, US**15 Floor 3 - Bedroom**

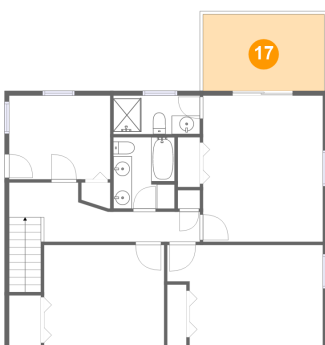
Dimensions: 13'0" x 10'11"
Area: 142 sq. ft
Counted as living area: Yes

Heated: Yes
Finished: Yes
Enclosed: Yes
Contiguous: Yes
Permitted: Yes
Wet space: No
Addition: No
Conversion: No

16 Floor 3 - Bedroom

Dimensions: 10'11" x 9'1"
Area: 99 sq. ft
Counted as living area: Yes

Heated: Yes
Finished: Yes
Enclosed: Yes
Contiguous: Yes
Permitted: Yes
Wet space: No
Addition: No
Conversion: No

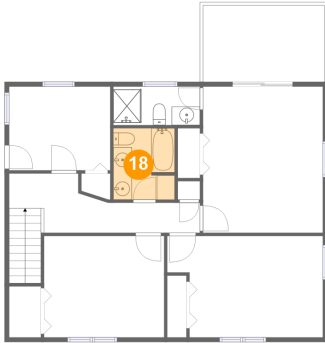
17 Floor 3 - Outdoor

Dimensions: 13'1" x 8'3"
Area: 108 sq. ft
Counted as living area: No

Heated: No
Finished: Yes
Enclosed: No
Contiguous: Yes
Permitted: Yes
Wet space: No
Addition: No
Conversion: No

52063 Woodridge Dr, South Bend, IN, US

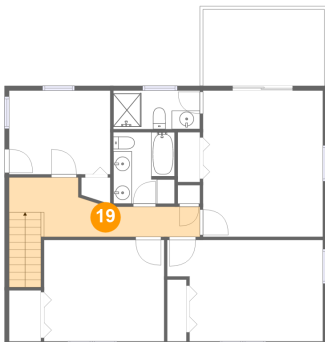
18 Floor 3 - Bath



Dimensions: 6'7" x 7'8"
Area: 50 sq. ft
Counted as living area: Yes

Heated: Yes
Finished: Yes
Enclosed: Yes
Contiguous: Yes
Permitted: Yes
Wet space: Yes
Addition: No
Conversion: No

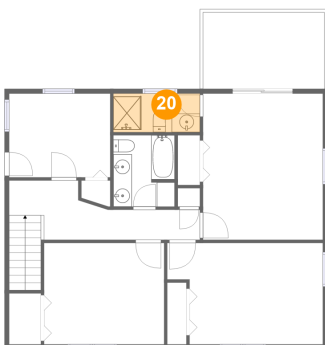
19 Floor 3 - Hall



Dimensions: 20'7" x 6'5"
Area: 111 sq. ft
Counted as living area: Yes

Heated: Yes
Finished: Yes
Enclosed: Yes
Contiguous: Yes
Permitted: Yes
Wet space: No
Addition: No
Conversion: No

20 Floor 3 - Bath

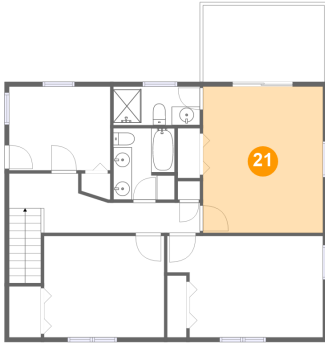


Dimensions: 9'4" x 4'2"
Area: 39 sq. ft
Counted as living area: Yes

Heated: Yes
Finished: Yes
Enclosed: Yes
Contiguous: Yes
Permitted: Yes
Wet space: Yes
Addition: No
Conversion: No

52063 Woodridge Dr, South Bend, IN, US

21 Floor 3 - Bedroom



Dimensions: 12'11" x 15'9"
Area: 204 sq. ft
Counted as living area: Yes

Heated: Yes
Finished: Yes
Enclosed: Yes
Contiguous: Yes
Permitted: Yes
Wet space: No
Addition: No
Conversion: No