



684 WARDEN AVE #207



Lainey Bonsell & Teresita Link

LTHOME.ca

Bringing your dreams home.

ROYAL LEPAGE
Estate Realty
BROKERAGE INDEPENDENTLY OWNED AND OPERATED



For more information on
684 WARDEN AVE #207



Experience easy, stylish, low rise condo living in this beautiful, well laid out, two bed, two bath condo with lots of smart storage and steps to every amenity.

This well maintained/updated condo comes complete with a spacious balcony overlooking the ravine, underground parking and reasonable maintenance fees.

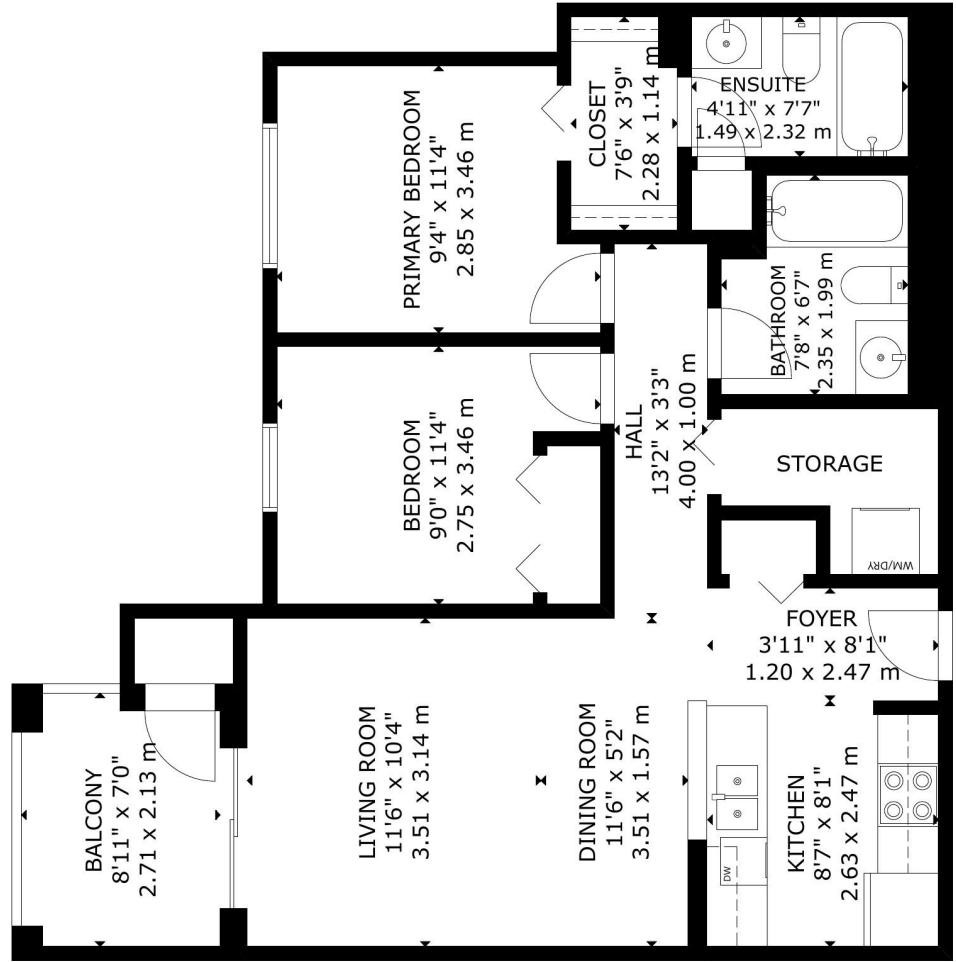
Walk across the street to Warden Subway station or the Warden Hilltop Community Centre. Trails to walk or bike are just steps away as well as shopping and schools - this friendly community offers it all!



Visit

www.LTHome.ca





GROSS INTERNAL AREA
 MAIN FLOOR: 68 m²/737 sq ft
 BALCONY: 6 m²/69 sq ft
 TOTAL: 68 m²/737 sq ft
 SIZE AND DIMENSIONS ARE APPROXIMATE. ACTUAL MAY VARY.
Measurement per MPAC = 785 sqft

Not intended to solicit buyers or sellers currently under contract with another Brokerage



Lainey Bonsell & Teresita Link
LTHOME.ca
Bringing your dreams home.

Presented by:

Lainey Bonsell, Broker
 Royal LePage Estate Realty, Brokerage
 Lainey@LTHome.ca
 416-836-9838