



# Revel

## Ovation Collection Boulevard One at Lowry



Elevation A



Elevation B



# Revel

2,554 square feet

This Courtyard Home delivers a healthier home environment and unmatched energy efficiency, all built by a local builder with more than 20 years of experience. With striking contemporary architecture and private outdoor living, the Revel plan is net zero energy, low-maintenance, and features a main-floor master suite. This home is certified under the Department of Energy's Zero Energy Ready Home and the EPA's IndoorAirPlus program. It's all about a home that does more...for you!

## Living Level



## Upper Level

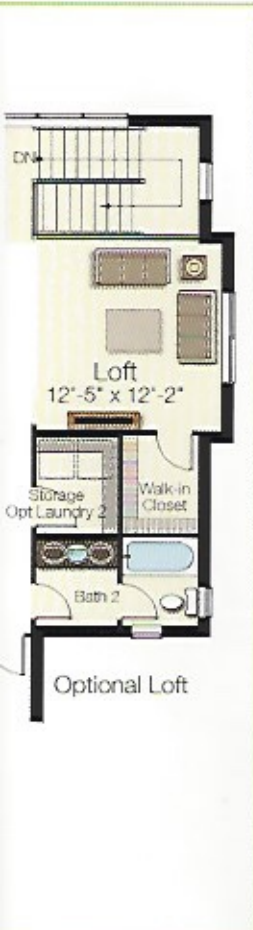


Optional Bedroom 4  
(replaces Study)



Optional 3/4 Bath  
(replaces Powder)





- 3 to 6 Bedrooms, 2½ to 4¾ Baths
- Main Floor Master Bedroom with Walk-in Closet
- Main Floor Study
- Rear Family Foyer with Desk and Closet
- Optional Upper Level Suites
- Optional 2nd Floor Laundry
- 10 foot Ceilings on 1st floor
- 9 foot Ceilings on 2nd floor
- 9½ inch Premium Performance Walls
- Large Covered Front Porch
- 2-Car Attached Garage
- Optional Finished Basement with Recreation Room, Bedroom and Full Bath



## Lower Level



Optional Finished Basement Shown

Optional Finished Basement with Rec Room, Bedroom & Bath. 795 sq. ft. Elev. A.  
733 sq. ft. Elev. B.

Unfinished Basement is Standard. Includes perimeter walls only. 1,396 sq. ft. Elev. A.  
1,351 sq. ft. Elev. B.  
Stub for Bath, Sink & Toilet Optional.



