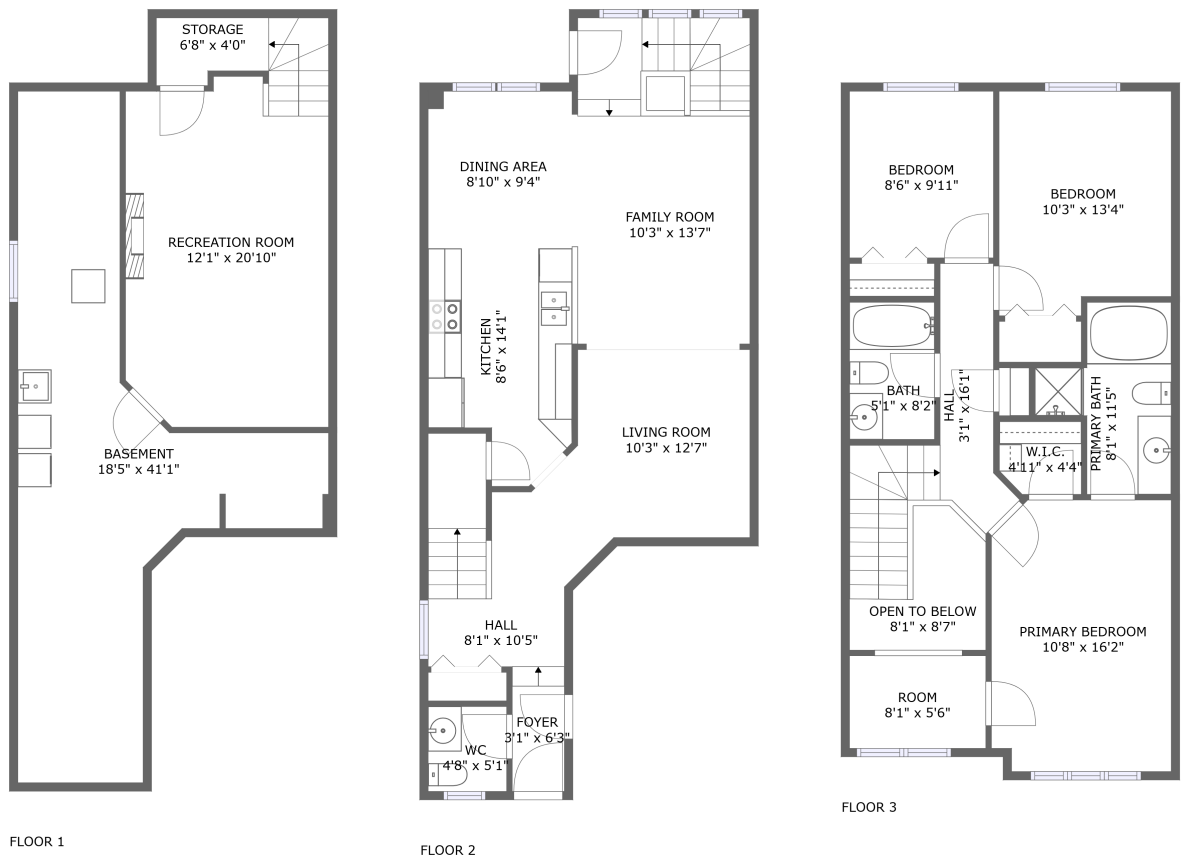


Home report

628 Everlasting Crescent,Orléans,Ontario,Canada



Total Area: 1663 sq. ft

Below Ground: 269 sq. ft, Floor 2: 679 sq. ft, Floor 3: 715 sq. ft

Excluded: Basement 348 sq. ft, Storage 24 sq. ft, Open to below 46 sq. ft, Walls: 163 sq. ft

Property summary

 **3** Floors

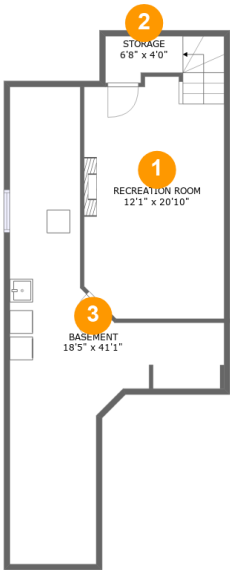
 **3** Bedrooms

 **2** Bathrooms

 **1** Half baths

Home report

628 Everlasting Crescent,Orléans,Ontario,Canada



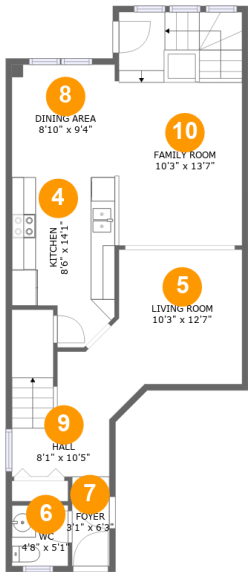
Room dimensions

Floor 1 Below ground Total:269sqft Excluded: 372sqft

#		Max Dimensions	sqft	Included
1	Recreation Room	12'1" x 20'10"	256 sq. ft	Yes
2	Storage	6'8" x 4'0"	24 sq. ft	No
3	Basement	18'5" x 41'1"	347 sq. ft	No

Home report

628 Everlasting Crescent,Orléans,Ontario,Canada



Room dimensions

Floor 2

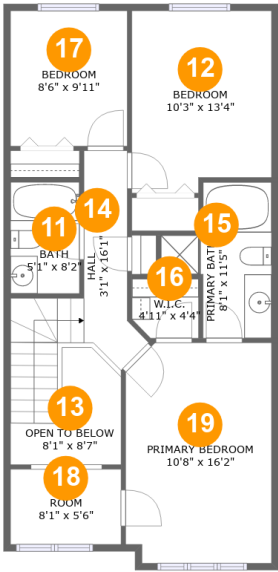
Total:679sqft

Excluded: 0sqft

#		Max Dimensions	sqft	Included
4	Kitchen	8'6" x 14'1"	106 sq. ft	Yes
5	Living Room	10'3" x 12'7"	117 sq. ft	Yes
6	WC	4'8" x 5'1"	24 sq. ft	Yes
7	Foyer	3'1" x 6'3"	23 sq. ft	Yes
8	Dining Area	8'10" x 9'4"	83 sq. ft	Yes
9	Hall	8'1" x 10'5"	103 sq. ft	Yes
10	Family Room	10'3" x 13'7"	198 sq. ft	Yes

Home report

628 Everlasting Crescent,Orléans,Ontario,Canada



Room dimensions

Floor 3 Total:715sqft Excluded: 46sqft

#		Max Dimensions	sqft	Included
11	Bath	5'1" x 8'2"	41 sq. ft	Yes
12	Bedroom	10'3" x 13'4"	131 sq. ft	Yes
13	Open To Below	8'1" x 8'7"	46 sq. ft	No
14	Hall	3'1" x 16'1"	92 sq. ft	Yes
15	Primary Bath	8'1" x 11'5"	66 sq. ft	Yes
16	W.I.C.	4'11" x 4'4"	20 sq. ft	Yes
17	Bedroom	8'6" x 9'11"	85 sq. ft	Yes
18	Room	8'1" x 5'6"	46 sq. ft	Yes
19	Primary Bedroom	10'8" x 16'2"	169 sq. ft	Yes

1 Floor 1 - Recreation Room



Max Dimensions: 12'1" x 20'10"  
Calculated Area: 256 sq. ft  
Included: No

Heated: Yes  
Finished: Yes  
Enclosed: Yes  
Contiguous: No  
Permitted: Yes  
Wet space: No  
Addition: No  
Conversion: No

2 Floor 1 - Storage



Max Dimensions: 6'8" x 4'0"  
Calculated Area: 24 sq. ft  
Included: No

Heated: No  
Finished: No  
Enclosed: No  
Contiguous: Yes  
Permitted: Yes  
Wet space: No  
Addition: No  
Conversion: No

3 Floor 1 - Basement



Max Dimensions: 18'5" x 41'1"  
Calculated Area: 347 sq. ft  
Included: No

Heated: Yes  
Finished: No  
Enclosed: Yes  
Contiguous: Yes  
Permitted: Yes  
Wet space: No  
Addition: No  
Conversion: No

4 Floor 2 - Kitchen



Max Dimensions: 8'6" x 14'1"  
Calculated Area: 106 sq. ft  
Included: Yes

Heated: Yes  
Finished: Yes  
Enclosed: Yes  
Contiguous: Yes  
Permitted: Yes  
Wet space: No  
Addition: No  
Conversion: No

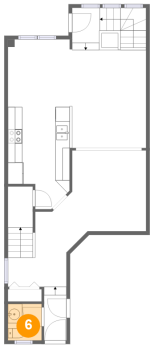
5 Floor 2 - Living Room



Max Dimensions: 10'3" x 12'7"  
Calculated Area: 117 sq. ft  
Included: Yes

Heated: Yes  
Finished: Yes  
Enclosed: Yes  
Contiguous: Yes  
Permitted: Yes  
Wet space: No  
Addition: No  
Conversion: No

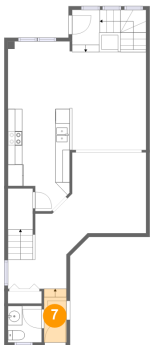
6 Floor 2 - WC



Max Dimensions: 4'8" x 5'1"  
Calculated Area: 24 sq. ft  
Included: Yes

Heated: Yes  
Finished: Yes  
Enclosed: Yes  
Contiguous: Yes  
Permitted: Yes  
Wet space: Yes  
Addition: No  
Conversion: No

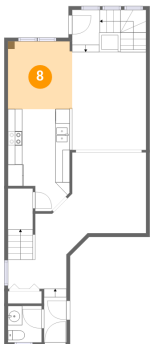
7 Floor 2 - Foyer



Max Dimensions: 3'1" x 6'3"  
Calculated Area: 23 sq. ft  
Included: Yes

Heated: Yes  
Finished: Yes  
Enclosed: Yes  
Contiguous: Yes  
Permitted: Yes  
Wet space: No  
Addition: No  
Conversion: No

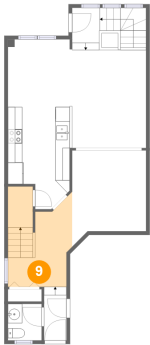
8 Floor 2 - Dining Area



Max Dimensions: 8'10" x 9'4"  
Calculated Area: 83 sq. ft  
Included: Yes

Heated: Yes  
Finished: Yes  
Enclosed: Yes  
Contiguous: Yes  
Permitted: Yes  
Wet space: No  
Addition: No  
Conversion: No

9 Floor 2 - Hall



Max Dimensions: 8'1" x 10'5"  
Calculated Area: 103 sq. ft  
Included: Yes

Heated: Yes  
Finished: Yes  
Enclosed: Yes  
Contiguous: Yes  
Permitted: Yes  
Wet space: No  
Addition: No  
Conversion: No

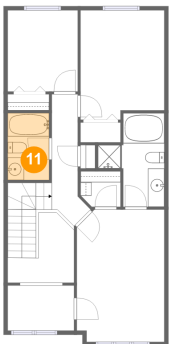
10 Floor 2 - Family Room



Max Dimensions: 10'3" x 13'7"  
Calculated Area: 198 sq. ft  
Included: Yes

Heated: Yes  
Finished: Yes  
Enclosed: Yes  
Contiguous: Yes  
Permitted: Yes  
Wet space: No  
Addition: No  
Conversion: No

11 Floor 3 - Bath

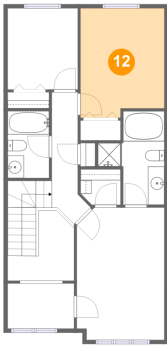


Max Dimensions: 5'1" x 8'2"  
Calculated Area: 41 sq. ft  
Included: Yes

Heated: Yes  
Finished: Yes  
Enclosed: Yes  
Contiguous: Yes  
Permitted: Yes  
Wet space: Yes  
Addition: No  
Conversion: No



12 Floor 3 - Bedroom



Max Dimensions: 10'3" x 13'4"  
Calculated Area: 131 sq. ft  
Included: Yes

Heated: Yes  
Finished: Yes  
Enclosed: Yes  
Contiguous: Yes  
Permitted: Yes  
Wet space: No  
Addition: No  
Conversion: No

13 Floor 3 - Open To Below



Max Dimensions: 8'1" x 8'7"  
Calculated Area: 46 sq. ft  
Included: No

Heated: No  
Finished: No  
Enclosed: No  
Contiguous: Yes  
Permitted: No  
Wet space: No  
Addition: No  
Conversion: No

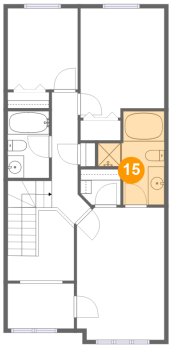
14 Floor 3 - Hall



Max Dimensions: 3'1" x 16'1"  
Calculated Area: 92 sq. ft  
Included: Yes

Heated: Yes  
Finished: Yes  
Enclosed: Yes  
Contiguous: Yes  
Permitted: Yes  
Wet space: No  
Addition: No  
Conversion: No

15 Floor 3 - Primary Bath



Max Dimensions: 8'1" x 11'5"  
Calculated Area: 66 sq. ft  
Included: Yes

Heated: Yes  
Finished: Yes  
Enclosed: Yes  
Contiguous: Yes  
Permitted: Yes  
Wet space: Yes  
Addition: No  
Conversion: No

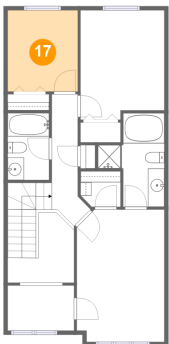
16 Floor 3 - W.I.C.



Max Dimensions: 4'11" x 4'4"  
Calculated Area: 20 sq. ft  
Included: Yes

Heated: Yes  
Finished: Yes  
Enclosed: Yes  
Contiguous: Yes  
Permitted: Yes  
Wet space: No  
Addition: No  
Conversion: No

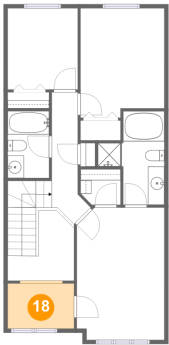
17 Floor 3 - Bedroom



Max Dimensions: 8'6" x 9'11"  
Calculated Area: 85 sq. ft  
Included: Yes

Heated: Yes  
Finished: Yes  
Enclosed: Yes  
Contiguous: Yes  
Permitted: Yes  
Wet space: No  
Addition: No  
Conversion: No

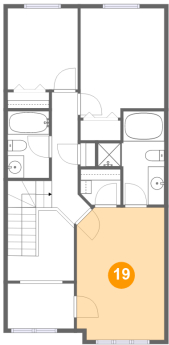
18 Floor 3 - Room



Max Dimensions: 8'1" x 5'6"  
Calculated Area: 46 sq. ft  
Included: Yes

Heated: Yes  
Finished: Yes  
Enclosed: Yes  
Contiguous: Yes  
Permitted: Yes  
Wet space: No  
Addition: No  
Conversion: No

19 Floor 3 - Primary Bedroom



Max Dimensions: 10'8" x 16'2"  
Calculated Area: 169 sq. ft  
Included: Yes

Heated: Yes  
Finished: Yes  
Enclosed: Yes  
Contiguous: Yes  
Permitted: Yes  
Wet space: No  
Addition: No  
Conversion: No