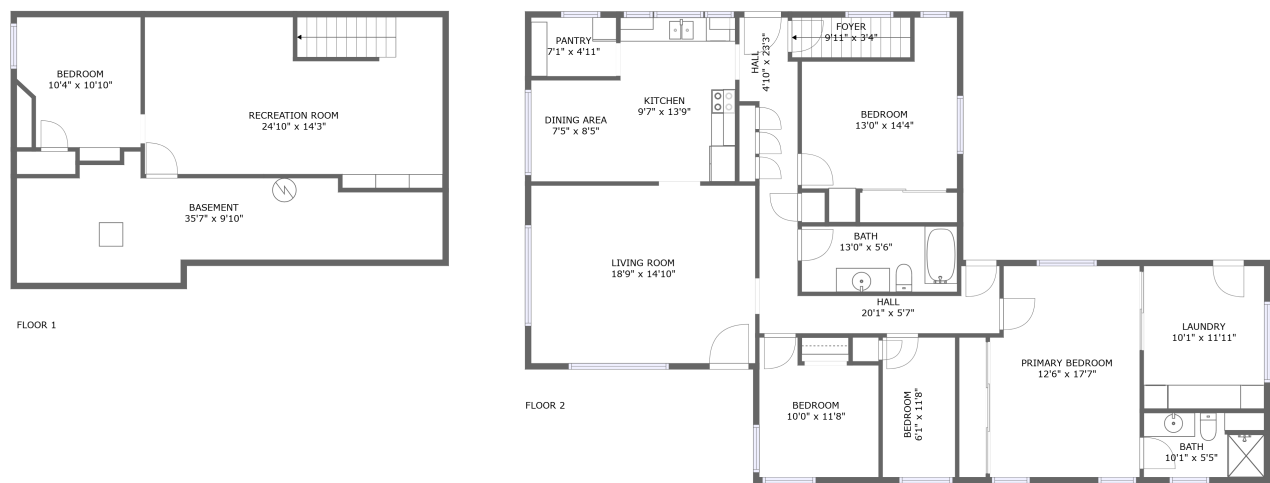




Home report


1805 5th St,Baker City,OR,US





Property summary


 **0** Garages


 **5** Bedrooms

 **2** Bathrooms

 **0** Half baths

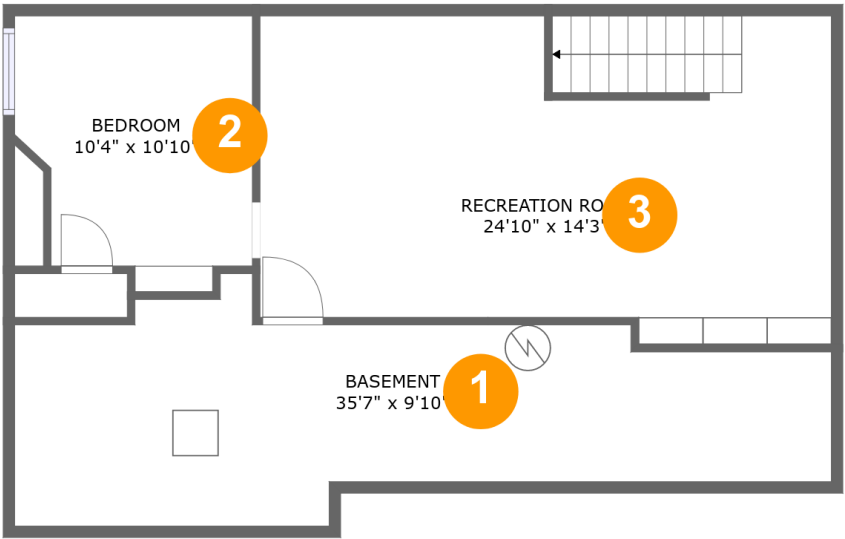
 **2** Floors

 **2,254** Gross living area sqft

 **2,547** Total sqft

Home report

1805 5th St,Baker City,OR,US



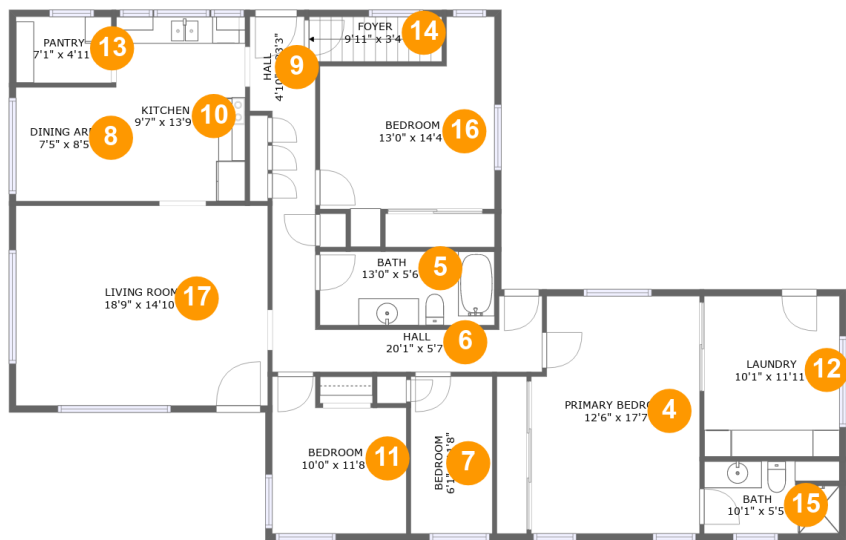
Room dimensions

Floor 1 Total sqft: 807 Living area: 514

#		Dimensions	sqft	Counted as living area
1	Basement	35'7" x 9'10"	266 sq. ft	No
2	Bedroom	10'4" x 10'10"	109 sq. ft	Yes
3	Recreation Room	24'10" x 14'3"	333 sq. ft	Yes

Home report

1805 5th St,Baker City,OR,US



Room dimensions

Floor 2 Total sqft: 1740 Living area: 1740

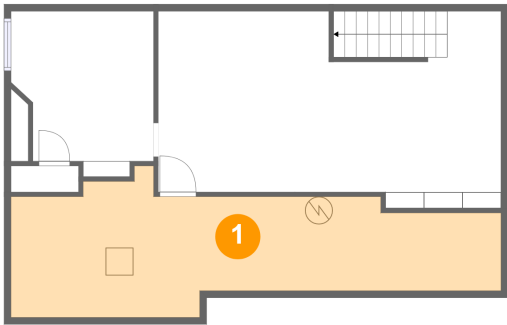
#		Dimensions	sqft	Counted as living area
4	Primary Bedroom	12'6" x 17'7"	214 sq. ft	Yes
5	Bath	13'0" x 5'6"	71 sq. ft	Yes
6	Hall	20'1" x 5'7"	71 sq. ft	Yes
7	Bedroom	6'1" x 11'8"	71 sq. ft	Yes
8	Dining Area	7'5" x 8'5"	63 sq. ft	Yes
9	Hall	4'10" x 23'3"	83 sq. ft	Yes
10	Kitchen	9'7" x 13'9"	132 sq. ft	Yes
11	Bedroom	10'0" x 11'8"	101 sq. ft	Yes
12	Laundry	10'1" x 11'11"	120 sq. ft	Yes
13	Pantry	7'1" x 4'11"	35 sq. ft	Yes
14	Foyer	9'11" x 3'4"	33 sq. ft	Yes

Home report

1805 5th St,Baker City,OR,US

#		Dimensions	sqft	Counted as living area
15	Bath	10'1" x 5'5"	53 sq. ft	Yes
16	Bedroom	13'0" x 14'4"	157 sq. ft	Yes
17	Living Room	18'9" x 14'10"	278 sq. ft	Yes

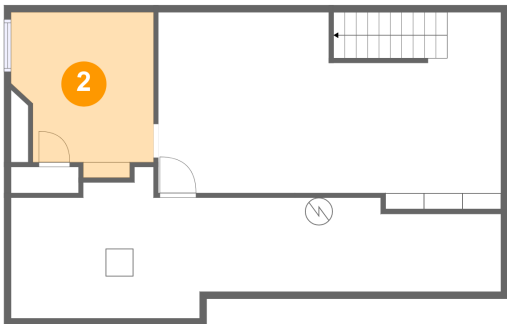
1 Floor 1 - Basement



Dimensions: 35'7" x 9'10"
Area: 266 sq. ft
Counted as living area: No

Heated: Yes
Finished: No
Enclosed: Yes
Contiguous: Yes
Permitted: Yes
Wet space: No
Addition: No
Conversion: No

2 Floor 1 - Bedroom



Dimensions: 10'4" x 10'10"
Area: 109 sq. ft
Counted as living area: Yes

Heated: Yes
Finished: Yes
Enclosed: Yes
Contiguous: Yes
Permitted: Yes
Wet space: No
Addition: No
Conversion: No

3 Floor 1 - Recreation Room



Dimensions: 24'10" x 14'3"
Area: 333 sq. ft
Counted as living area: Yes

Heated: Yes
Finished: Yes
Enclosed: Yes
Contiguous: Yes
Permitted: Yes
Wet space: No
Addition: No
Conversion: No

4 Floor 2 - Primary Bedroom



Dimensions: 12'6" x 17'7"
Area: 214 sq. ft
Counted as living area: Yes

Heated: Yes
Finished: Yes
Enclosed: Yes
Contiguous: Yes
Permitted: Yes
Wet space: No
Addition: No
Conversion: No

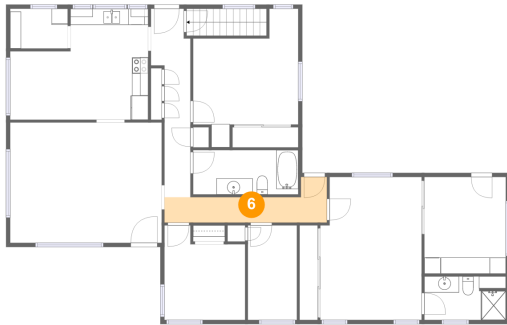
5 Floor 2 - Bath



Dimensions: 13'0" x 5'6"
Area: 71 sq. ft
Counted as living area: Yes

Heated: Yes
Finished: Yes
Enclosed: Yes
Contiguous: Yes
Permitted: Yes
Wet space: Yes
Addition: No
Conversion: No

6 Floor 2 - Hall



Dimensions: 20'1" x 5'7"
Area: 71 sq. ft
Counted as living area: Yes

Heated: Yes
Finished: Yes
Enclosed: Yes
Contiguous: Yes
Permitted: Yes
Wet space: No
Addition: No
Conversion: No

7 Floor 2 - Bedroom



Dimensions: 6'1" x 11'8"
Area: 71 sq. ft
Counted as living area: Yes

Heated: Yes
Finished: Yes
Enclosed: Yes
Contiguous: Yes
Permitted: Yes
Wet space: No
Addition: No
Conversion: No

8 Floor 2 - Dining Area



Dimensions: 7'5" x 8'5"
Area: 63 sq. ft
Counted as living area: Yes

Heated: Yes
Finished: Yes
Enclosed: Yes
Contiguous: Yes
Permitted: Yes
Wet space: No
Addition: No
Conversion: No

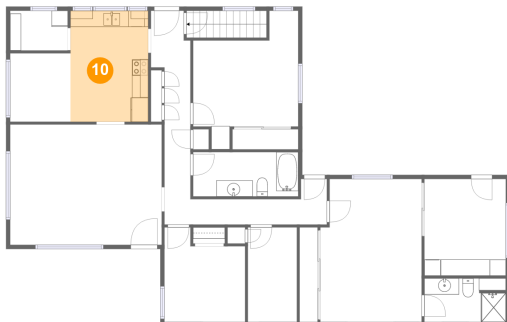
9 Floor 2 - Hall



Dimensions: 4'10" x 23'3"
Area: 83 sq. ft
Counted as living area: Yes

Heated: Yes
Finished: Yes
Enclosed: Yes
Contiguous: Yes
Permitted: Yes
Wet space: No
Addition: No
Conversion: No

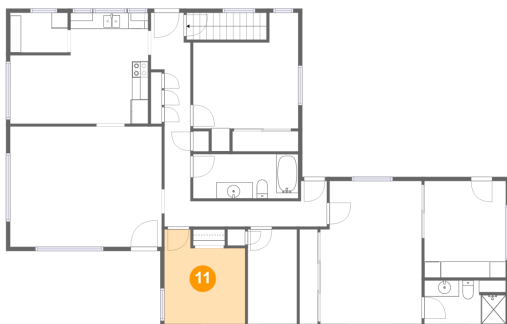
10 Floor 2 - Kitchen



Dimensions: 9'7" x 13'9"
Area: 132 sq. ft
Counted as living area: Yes

Heated: Yes
Finished: Yes
Enclosed: Yes
Contiguous: Yes
Permitted: Yes
Wet space: No
Addition: No
Conversion: No

11 Floor 2 - Bedroom



Dimensions: 10'0" x 11'8"
Area: 101 sq. ft
Counted as living area: Yes

Heated: Yes
Finished: Yes
Enclosed: Yes
Contiguous: Yes
Permitted: Yes
Wet space: No
Addition: No
Conversion: No

12 Floor 2 - Laundry



Dimensions: 10'1" x 11'11"
Area: 120 sq. ft
Counted as living area: Yes

Heated: Yes
Finished: Yes
Enclosed: Yes
Contiguous: Yes
Permitted: Yes
Wet space: No
Addition: No
Conversion: No

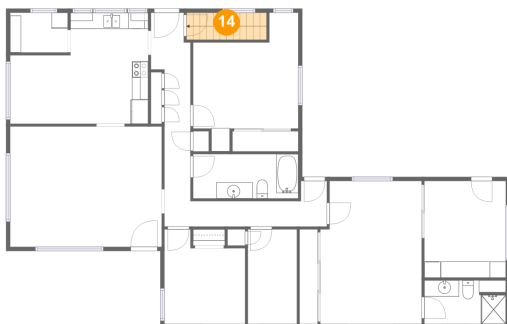
13 Floor 2 - Pantry



Dimensions: 7'1" x 4'11"
Area: 35 sq. ft
Counted as living area: Yes

Heated: Yes
Finished: Yes
Enclosed: Yes
Contiguous: Yes
Permitted: Yes
Wet space: No
Addition: No
Conversion: No

14 Floor 2 - Foyer



Dimensions: 9'11" x 3'4"
Area: 33 sq. ft
Counted as living area: Yes

Heated: Yes
Finished: Yes
Enclosed: Yes
Contiguous: Yes
Permitted: Yes
Wet space: No
Addition: No
Conversion: No

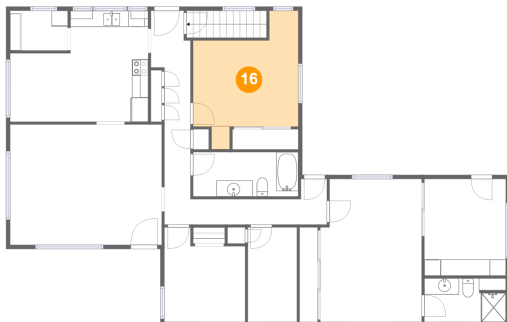
15 Floor 2 - Bath



Dimensions: 10'1" x 5'5"
Area: 53 sq. ft
Counted as living area: Yes

Heated: Yes
Finished: Yes
Enclosed: Yes
Contiguous: Yes
Permitted: Yes
Wet space: Yes
Addition: No
Conversion: No

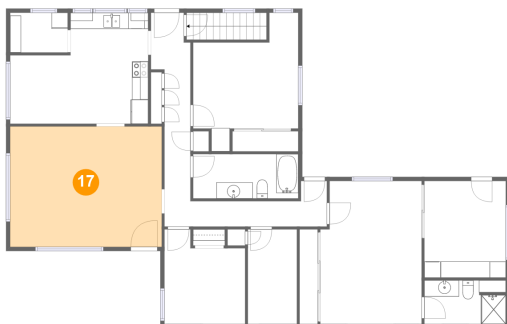
16 Floor 2 - Bedroom



Dimensions: 13'0" x 14'4"
Area: 157 sq. ft
Counted as living area: Yes

Heated: Yes
Finished: Yes
Enclosed: Yes
Contiguous: Yes
Permitted: Yes
Wet space: No
Addition: No
Conversion: No

17 Floor 2 - Living Room



Dimensions: 18'9" x 14'10"
Area: 278 sq. ft
Counted as living area: Yes

Heated: Yes
Finished: Yes
Enclosed: Yes
Contiguous: Yes
Permitted: Yes
Wet space: No
Addition: No
Conversion: No