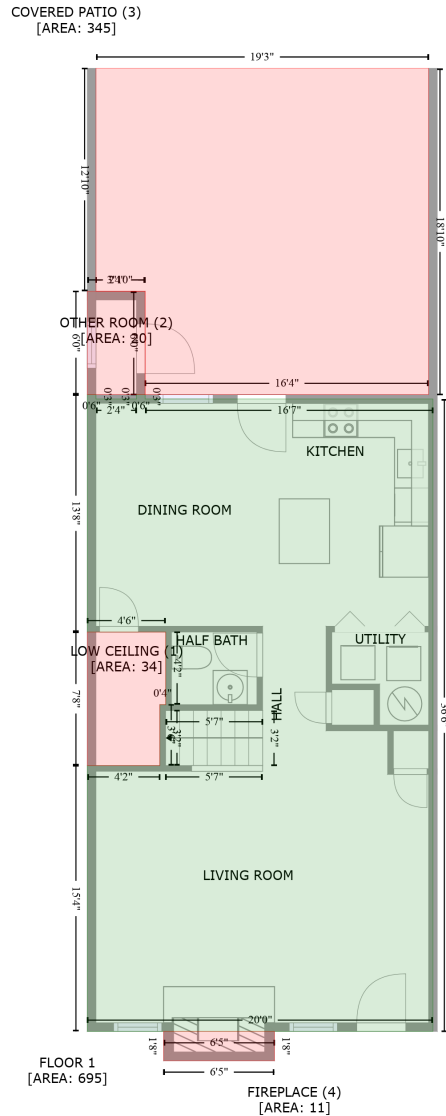


427 Russell Street Northeast, Lincoln Mill, Huntsville, Madison County, Alabama, United States, 35801

Gross Living Area: 1895 sq. ft



Space	Area (sq. ft)	Calculation
FLOOR 1 (Living area)	695	Coordinate Polygon Area Algorithm using inches $-((119.9 + 119.9) * (220.2 - 223.2) + (119.9 + 148) * (223.2 - 223.2) + (148 + 148) * (223.2 - 220.2) + (148 + 154) * (220.2 - 220.2) + (154 + 154) * (220.2 - 223.2) + (154 + 353.4) * (223.2 - 223.2) + (353.4 + 353.4) * (223.2 - 661.1) + (353.4 + 113.9) * (661.1 - 661.1) + (113.9 + 113.9) * (661.1 - 477) + (113.9 + 164.2) * (477 - 477) + (164.2 + 164.2) * (477 - 434.8) + (164.2 + 168.3) * (434.8 - 434.8) + (168.3 + 168.3) * (434.8 - 384.5) + (168.3 + 113.9) * (384.5 - 384.5) + (113.9 + 113.9) * (384.5 - 220.2) + (113.9 + 119.9) * (220.2 - 220.2)) * 0.5 + 0.00694$

427 Russell Street Northeast, Lincoln Mill, Huntsville, Madison County, Alabama, United States, 35801

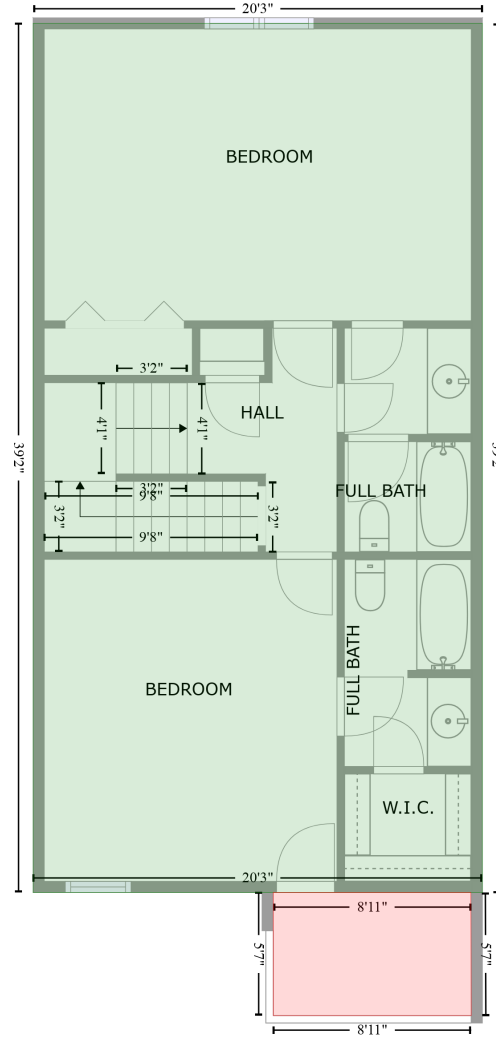
Gross Living Area: 1895 sq. ft

Space	Area (sq. ft)	Calculation <small>Coordinate Polygon Area Algorithm using inches</small>
LOW CEILING (Non-living area)	34	$-((168.3 + 168.3) * (384.5 - 434.8) + (168.3 + 164.2) * (434.8 - 434.8) + (164.2 + 164.2) * (434.8 - 477) + (164.2 + 113.9) * (477 - 477) + (113.9 + 113.9) * (477 - 384.5) + (113.9 + 168.3) * (384.5 - 384.5)) * 0.5 * 0.00694$
OTHER ROOM (Non-living area)	20	$-((154 + 154) * (148.6 - 220.2) + (154 + 113.9) * (220.2 - 220.2) + (113.9 + 113.9) * (220.2 - 148.6) + (113.9 + 154) * (148.6 - 148.6)) * 0.5 * 0.00694$
COVERED PATIO (Non-living area)	345	$-((350.4 + 350.4) * (-5.7 - 220.2) + (350.4 + 154) * (220.2 - 220.2) + (154 + 154) * (220.2 - 148.6) + (154 + 119.9) * (148.6 - 148.6) + (119.9 + 119.9) * (148.6 - -5.7) + (119.9 + 350.4) * (-5.7 - -5.7)) * 0.5 * 0.00694$
FIREPLACE (Non-living area)	11	$-((243.6 + 243.6) * (661.1 - 681.4) + (243.6 + 166.8) * (681.4 - 681.4) + (166.8 + 166.8) * (681.4 - 661.1) + (166.8 + 243.6) * (661.1 - 661.1)) * 0.5 * 0.00694$

427 Russell Street Northeast, Lincoln Mill, Huntsville, Madison County, Alabama, United States, 35801

Gross Living Area: 1895 sq. ft

FLOOR 2
[AREA: 792]

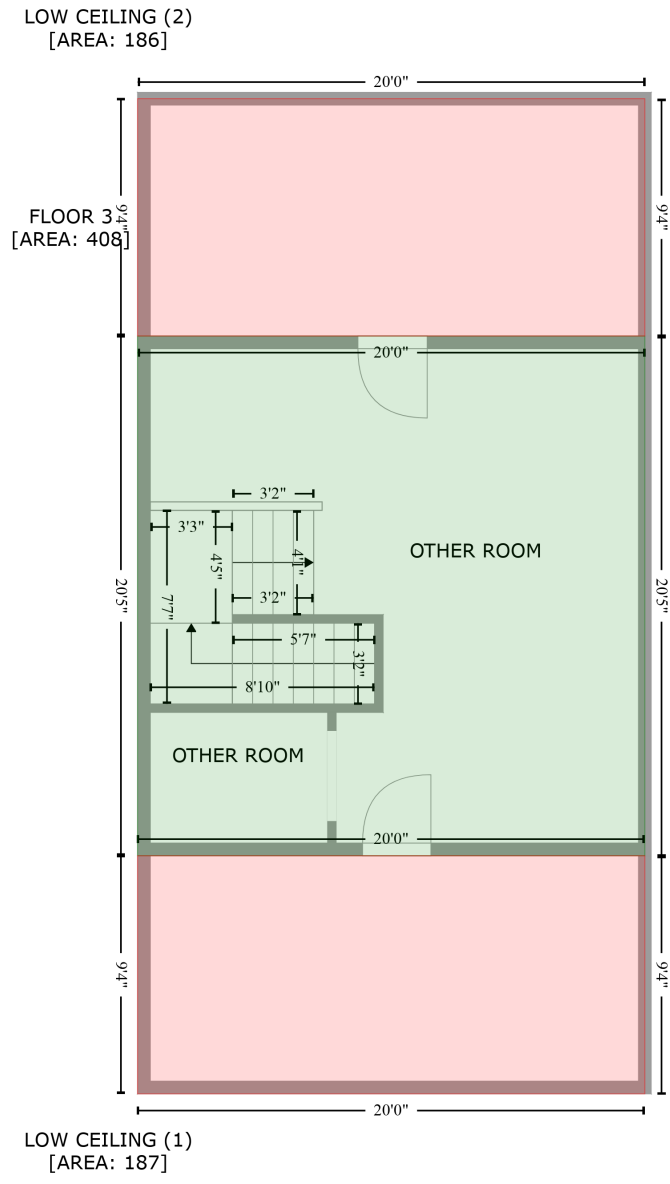


BALCONY (1)
[AREA: 49]

Space	Area (sq. ft)	Calculation <small>Coordinate Polygon Area Algorithm using inches</small>
FLOOR 2 (Living area)	792	$-((356.5 + 356.5) * (191.2 - 661.1) + (356.5 + 113.9) * (661.1 - 661.1) + (113.9 + 113.9) * (661.1 - 191.2) + (113.9 + 356.5) * (191.2 - 191.2)) * 0.5 * 0.00694$
BALCONY (Non-living area)	49	$-((350.3 + 350.5) * (661.1 - 727.6) + (350.5 + 243.6) * (727.6 - 727.6) + (243.6 + 243.6) * (727.6 - 661.1) + (243.6 + 350.3) * (661.1 - 661.1)) * 0.5 * 0.00694$

427 Russell Street Northeast, Lincoln Mill, Huntsville, Madison County, Alabama, United States, 35801

Gross Living Area: 1895 sq. ft



Space	Area (sq. ft)	Calculation <small>Coordinate Polygon Area Algorithm using inches</small>
FLOOR 3 (Living area)	408	$-((353.5 + 353.5) * (303.2 - 548.6) + (353.5 + 113.9) * (548.6 - 548.6) + (113.9 + 113.9) * (548.6 - 303.2) + (113.9 + 353.5) * (303.2 - 303.2)) * 0.5 * 0.00694$
LOW CEILING (Non-living area)	187	$-((353.5 + 353.5) * (548.6 - 661.1) + (353.5 + 113.9) * (661.1 - 661.1) + (113.9 + 113.9) * (661.1 - 548.6) + (113.9 + 353.5) * (548.6 - 548.6)) * 0.5 * 0.00694$
LOW CEILING (Non-living area)	186	$-((353.5 + 353.5) * (191.2 - 303.2) + (353.5 + 113.9) * (303.2 - 303.2) + (113.9 + 113.9) * (303.2 - 191.2) + (113.9 + 353.5) * (191.2 - 191.2)) * 0.5 * 0.00694$