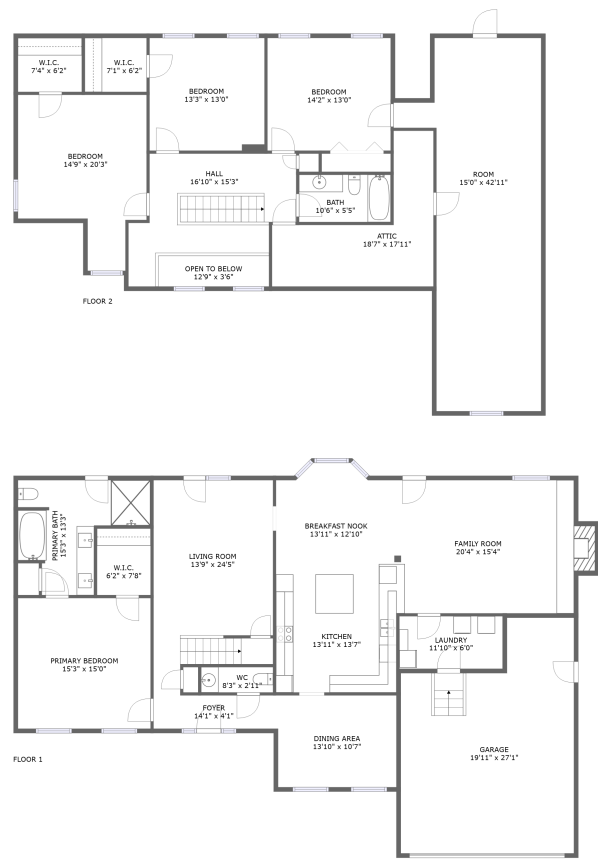


Home report

2713 Cynthia Lane Southeast, Huntsville, Madison County, Alabama, United States, 35803



Total Area: 3145 sq. ft

Floor 1: 1742 sq. ft, Floor 2: 1403 sq. ft

Excluded: Garage 462 sq. ft, Fireplace 15 sq. ft, Opentobelow 46 sq. ft, Low Ceiling 193 sq. ft, Attic 141 sq. ft, Walls: 235 sq. ft

Property summary

 **2** Floors

 **4** Bedrooms

 **2** Bathrooms

Home report

**2713 Cynthia Lane Southeast, Huntsville, Madison County,
Alabama, United States, 35803**



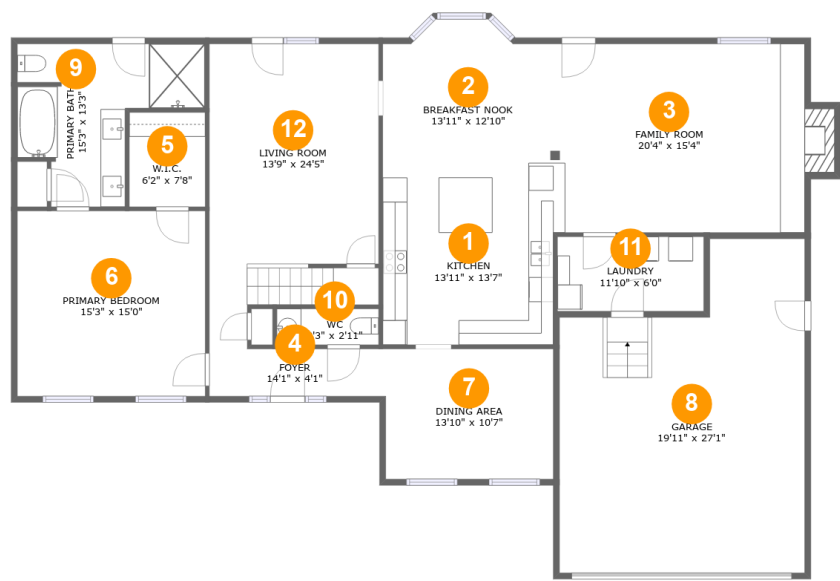
1
Half baths



1
Garages

Home report

2713 Cynthia Lane Southeast, Huntsville, Madison County, Alabama, United States, 35803



Room dimensions

Floor 1 Total:1742sqft Excluded: 477sqft

#		Max Dimensions	sqft	Included
1	Kitchen	13'11" x 13'7"	188 sq. ft	Yes
2	Breakfast Nook	13'11" x 12'10"	164 sq. ft	Yes
3	Family Room	20'4" x 15'4"	324 sq. ft	Yes
4	Foyer	14'1" x 4'1"	55 sq. ft	Yes
5	W.I.C.	6'2" x 7'8"	47 sq. ft	Yes
6	Primary Bedroom	15'3" x 15'0"	229 sq. ft	Yes
7	Dining Area	13'10" x 10'7"	145 sq. ft	Yes
8	Garage	19'11" x 27'1"	462 sq. ft	No
9	Primary Bath	15'3" x 13'3"	137 sq. ft	Yes
10	WC	8'3" x 2'11"	24 sq. ft	Yes
11	Laundry	11'10" x 6'0"	72 sq. ft	Yes

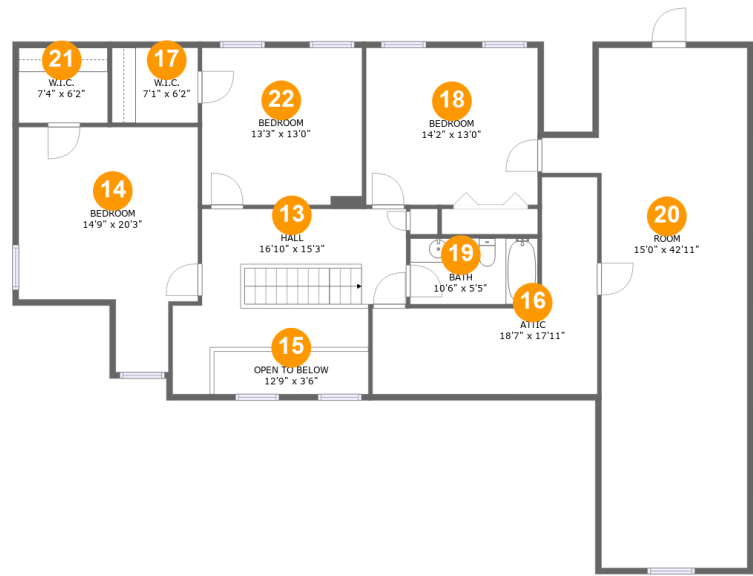
Home report

2713 Cynthia Lane Southeast, Huntsville, Madison County,
Alabama, United States, 35803

#		Max Dimensions	sqft	Included
12	Living Room	13'9" x 24'5"	288 sq. ft	Yes

Home report

2713 Cynthia Lane Southeast, Huntsville, Madison County, Alabama, United States, 35803



Room dimensions

Floor 2 Total:1403sqft Excluded: 380sqft

#		Max Dimensions	sqft	Included
13	Hall	16'10" x 15'3"	207 sq. ft	Yes
14	Bedroom	14'9" x 20'3"	237 sq. ft	Yes
15	Open To Below	12'9" x 3'6"	45 sq. ft	No
16	Attic	18'7" x 17'11"	141 sq. ft	No
17	W.I.C.	7'1" x 6'2"	44 sq. ft	Yes
18	Bedroom	14'2" x 13'0"	184 sq. ft	Yes
19	Bath	10'6" x 5'5"	57 sq. ft	Yes
20	Room	15'0" x 42'11"	382 sq. ft	Yes
21	W.I.C.	7'4" x 6'2"	46 sq. ft	Yes
22	Bedroom	13'3" x 13'0"	171 sq. ft	Yes

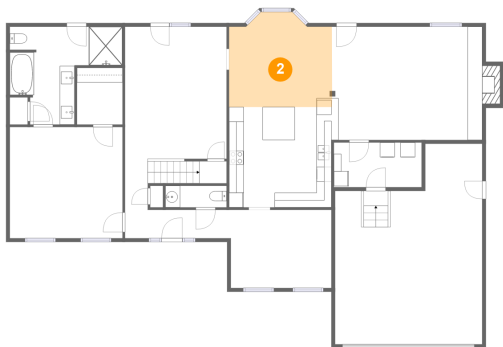
1 Floor 1 - Kitchen



Max Dimensions: 13'11" x 13'7"
Calculated Area: 188 sq. ft
Included: Yes

Heated: Yes
Finished: Yes
Enclosed: Yes
Contiguous: Yes
Permitted: Yes
Wet space: No
Addition: No
Conversion: No

2 Floor 1 - Breakfast Nook

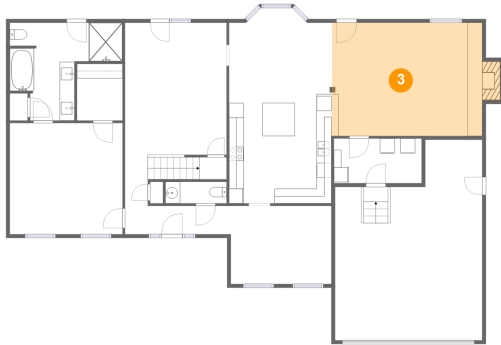


Max Dimensions: 13'11" x 12'10"
Calculated Area: 164 sq. ft
Included: Yes

Heated: Yes
Finished: Yes
Enclosed: Yes
Contiguous: Yes
Permitted: Yes
Wet space: No
Addition: No
Conversion: No

2713 Cynthia Lane Southeast, Huntsville, Madison County,
Alabama, United States, 35803

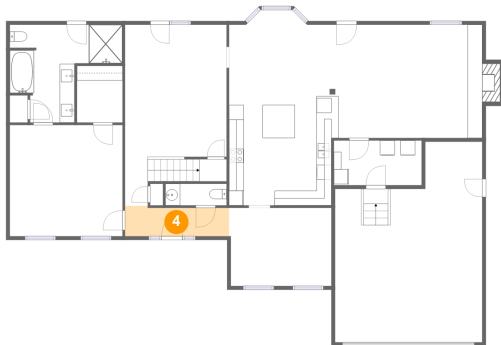
3 Floor 1 - Family Room



Max Dimensions: 20'4" x 15'4"
Calculated Area: 324 sq. ft
Included: Yes

Heated: Yes
Finished: Yes
Enclosed: Yes
Contiguous: Yes
Permitted: Yes
Wet space: No
Addition: No
Conversion: No

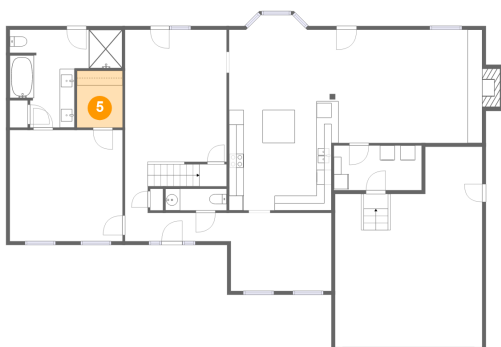
4 Floor 1 - Foyer



Max Dimensions: 14'1" x 4'1"
Calculated Area: 55 sq. ft
Included: Yes

Heated: Yes
Finished: Yes
Enclosed: Yes
Contiguous: Yes
Permitted: Yes
Wet space: No
Addition: No
Conversion: No

5 Floor 1 - W.I.C.

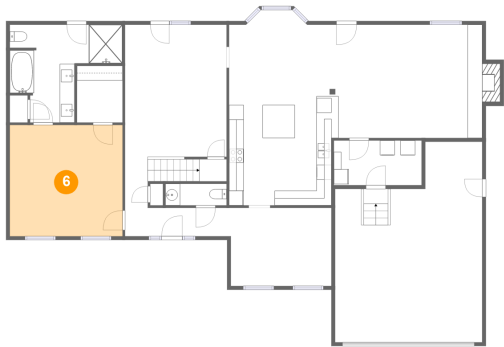


Max Dimensions: 6'2" x 7'8"
Calculated Area: 47 sq. ft
Included: Yes

Heated: Yes
Finished: Yes
Enclosed: Yes
Contiguous: Yes
Permitted: Yes
Wet space: No
Addition: No
Conversion: No

2713 Cynthia Lane Southeast, Huntsville, Madison County,
Alabama, United States, 35803

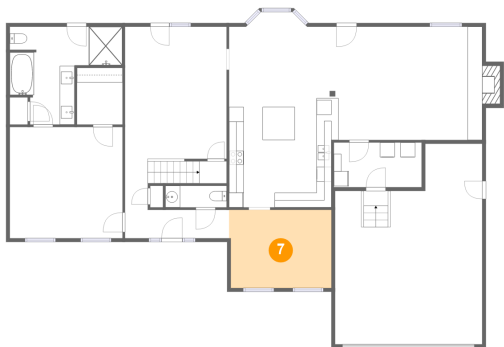
6 Floor 1 - Primary Bedroom



Max Dimensions: 15'3" x 15'0"
Calculated Area: 229 sq. ft
Included: Yes

Heated: Yes
Finished: Yes
Enclosed: Yes
Contiguous: Yes
Permitted: Yes
Wet space: No
Addition: No
Conversion: No

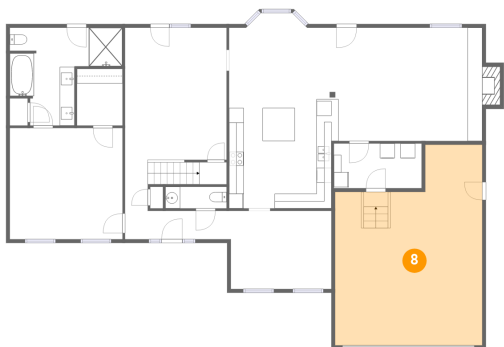
7 Floor 1 - Dining Area



Max Dimensions: 13'10" x 10'7"
Calculated Area: 145 sq. ft
Included: Yes

Heated: Yes
Finished: Yes
Enclosed: Yes
Contiguous: Yes
Permitted: Yes
Wet space: No
Addition: No
Conversion: No

8 Floor 1 - Garage



Max Dimensions: 19'11" x 27'1"
Calculated Area: 462 sq. ft
Included: No

Heated: No
Finished: No
Enclosed: Yes
Contiguous: Yes
Permitted: Yes
Wet space: No
Addition: No
Conversion: No

2713 Cynthia Lane Southeast, Huntsville, Madison County,
Alabama, United States, 35803

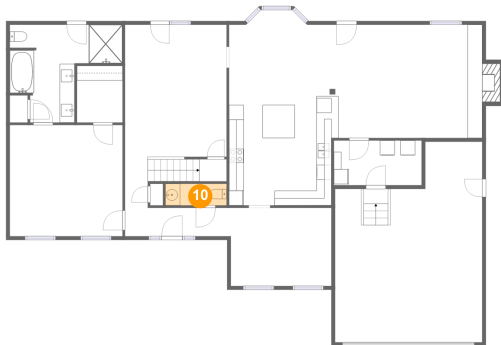
9 Floor 1 - Primary Bath



Max Dimensions: 15'3" x 13'3"
Calculated Area: 137 sq. ft
Included: Yes

Heated: Yes
Finished: Yes
Enclosed: Yes
Contiguous: Yes
Permitted: Yes
Wet space: Yes
Addition: No
Conversion: No

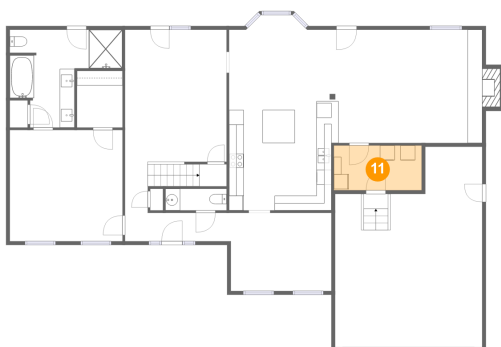
10 Floor 1 - WC



Max Dimensions: 8'3" x 2'11"
Calculated Area: 24 sq. ft
Included: Yes

Heated: Yes
Finished: Yes
Enclosed: Yes
Contiguous: Yes
Permitted: Yes
Wet space: Yes
Addition: No
Conversion: No

11 Floor 1 - Laundry

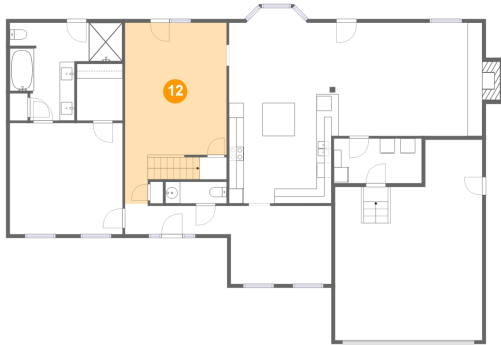


Max Dimensions: 11'10" x 6'0"
Calculated Area: 72 sq. ft
Included: Yes

Heated: Yes
Finished: Yes
Enclosed: Yes
Contiguous: Yes
Permitted: Yes
Wet space: No
Addition: No
Conversion: No

2713 Cynthia Lane Southeast, Huntsville, Madison County,
Alabama, United States, 35803

12 Floor 1 - Living Room



Max Dimensions: 13'9" x 24'5"
Calculated Area: 288 sq. ft
Included: Yes

Heated: Yes
Finished: Yes
Enclosed: Yes
Contiguous: Yes
Permitted: Yes
Wet space: No
Addition: No
Conversion: No

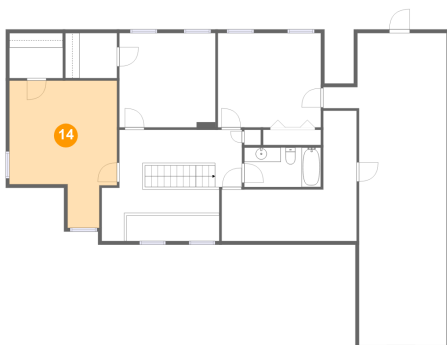
13 Floor 2 - Hall



Max Dimensions: 16'10" x 15'3"
Calculated Area: 207 sq. ft
Included: Yes

Heated: Yes
Finished: Yes
Enclosed: Yes
Contiguous: Yes
Permitted: Yes
Wet space: No
Addition: No
Conversion: No

14 Floor 2 - Bedroom



Max Dimensions: 14'9" x 20'3"
Calculated Area: 237 sq. ft
Included: Yes

Heated: Yes
Finished: Yes
Enclosed: Yes
Contiguous: Yes
Permitted: Yes
Wet space: No
Addition: No
Conversion: No

2713 Cynthia Lane Southeast, Huntsville, Madison County,
Alabama, United States, 35803

15 Floor 2 - Open To Below



Max Dimensions: 12'9" x 3'6"
Calculated Area: 45 sq. ft
Included: No

Heated: No
Finished: No
Enclosed: No
Contiguous: Yes
Permitted: No
Wet space: No
Addition: No
Conversion: No

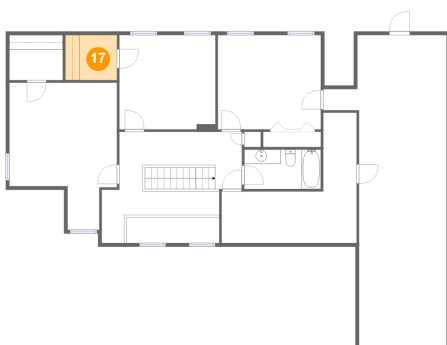
16 Floor 2 - Attic



Max Dimensions: 18'7" x 17'11"
Calculated Area: 141 sq. ft
Included: No

Heated: No
Finished: No
Enclosed: Yes
Contiguous: Yes
Permitted: Yes
Wet space: No
Addition: No
Conversion: No

17 Floor 2 - W.I.C.



Max Dimensions: 7'1" x 6'2"
Calculated Area: 44 sq. ft
Included: Yes

Heated: Yes
Finished: Yes
Enclosed: Yes
Contiguous: Yes
Permitted: Yes
Wet space: No
Addition: No
Conversion: No

2713 Cynthia Lane Southeast, Huntsville, Madison County,
Alabama, United States, 35803

18 Floor 2 - Bedroom



Max Dimensions: 14'2" x 13'0"
Calculated Area: 184 sq. ft
Included: Yes

Heated: Yes
Finished: Yes
Enclosed: Yes
Contiguous: Yes
Permitted: Yes
Wet space: No
Addition: No
Conversion: No

19 Floor 2 - Bath



Max Dimensions: 10'6" x 5'5"
Calculated Area: 57 sq. ft
Included: Yes

Heated: Yes
Finished: Yes
Enclosed: Yes
Contiguous: Yes
Permitted: Yes
Wet space: Yes
Addition: No
Conversion: No

20 Floor 2 - Room



Max Dimensions: 15'0" x 42'11"
Calculated Area: 382 sq. ft
Included: Yes

Heated: Yes
Finished: Yes
Enclosed: Yes
Contiguous: Yes
Permitted: Yes
Wet space: No
Addition: No
Conversion: No

2713 Cynthia Lane Southeast, Huntsville, Madison County,
Alabama, United States, 35803

21 Floor 2 - W.I.C.



Max Dimensions: 7'4" x 6'2"
Calculated Area: 46 sq. ft
Included: Yes

Heated: Yes
Finished: Yes
Enclosed: Yes
Contiguous: Yes
Permitted: Yes
Wet space: No
Addition: No
Conversion: No

22 Floor 2 - Bedroom



Max Dimensions: 13'3" x 13'0"
Calculated Area: 171 sq. ft
Included: Yes

Heated: Yes
Finished: Yes
Enclosed: Yes
Contiguous: Yes
Permitted: Yes
Wet space: No
Addition: No
Conversion: No