

Home report

4312 Erlene Court, Chester, Chesterfield County, Virginia, United States, 23831




**Total GLA: 3989 sq. ft**  
Floor 1: 1493 sq. ft, Floor 2: 2496 sq. ft  
Excluded: Storage 358 sq. ft, Room 119 sq. ft, Utility 32 sq. ft, Fireplace 26 sq. ft, Covered patio 189 sq. ft, Patio 774 sq. ft, Deck 204 sq. ft

Property summary

**2**  
Floors

**5**  
Bedrooms

**3**  
Bathrooms

**1**  
Half baths

Home report

4312 Erlene Court, Chester, Chesterfield County, Virginia, United States, 23831



Room dimensions

Floor 1

Total:1493sqft   Excluded: 522sqft

#		Max Dimensions	sqft	Included
1	Hall	17'4" x 3'6"	61 sq. ft	Yes
2	Room	11'6" x 9'5"	110 sq. ft	No
3	Hall	19'11" x 3'5"	70 sq. ft	Yes
4	Bedroom	12'11" x 21'0"	240 sq. ft	Yes
5	Hall	3'3" x 3'10"	41 sq. ft	Yes
6	Room	17'0" x 9'6"	163 sq. ft	Yes
7	Bath	9'0" x 12'2"	107 sq. ft	Yes
8	Utility	2'11" x 10'6"	31 sq. ft	No
9	Hall	9'7" x 3'8"	36 sq. ft	Yes
10	Bedroom	18'1" x 15'5"	257 sq. ft	Yes
11	Storage	12'10" x 21'0"	236 sq. ft	No

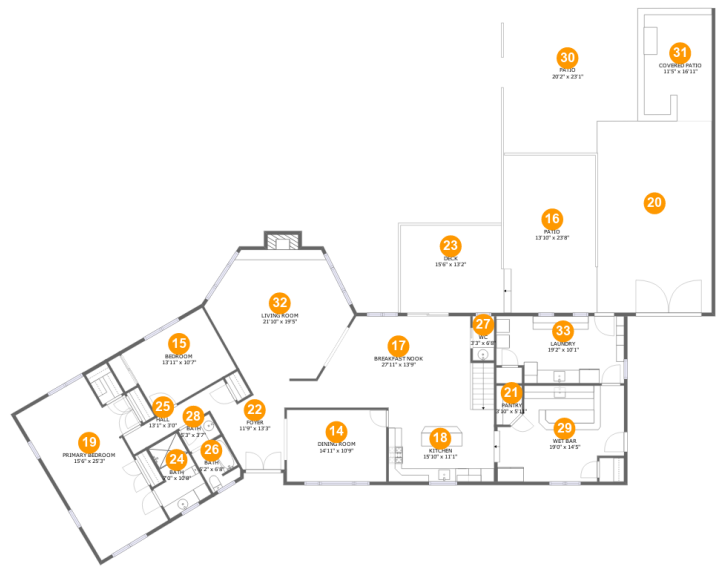
Home report

4312 Erlene Court, Chester, Chesterfield County, Virginia, United States, 23831

#		Max Dimensions	sqft	Included
12	Storage	10'5" x 12'1"	107 sq. ft	No
13	Bedroom	21'11" x 18'6"	335 sq. ft	Yes

Home report

4312 Erlene Court, Chester, Chesterfield County, Virginia, United States, 23831



Room dimensions

Floor 2

Total:2496sqft

Excluded: 1180sqft

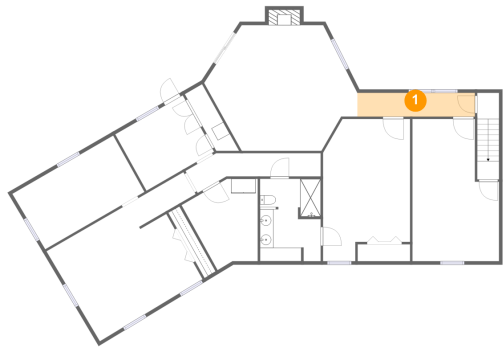
#		Max Dimensions	sqft	Included
14	Dining Room	14'11" x 10'9"	161 sq. ft	Yes
15	Bedroom	13'11" x 10'7"	147 sq. ft	Yes
16	Patio	13'10" x 23'8"	337 sq. ft	No
17	Breakfast Nook	27'11" x 13'9"	331 sq. ft	Yes
18	Kitchen	15'10" x 11'1"	177 sq. ft	Yes
19	Primary Bedroom	15'6" x 25'3"	318 sq. ft	Yes
20	Driveway	17'3" x 28'9"	497 sq. ft	No
21	Pantry	3'10" x 5'11"	21 sq. ft	Yes
22	Foyer	11'9" x 13'3"	120 sq. ft	Yes
23	Deck	15'6" x 13'2"	204 sq. ft	No
24	Bath	7'0" x 10'8"	65 sq. ft	Yes

## Home report

**4312 Erlene Court, Chester, Chesterfield County, Virginia, United States, 23831**

#		Max Dimensions	sqft	Included
25	Hall	13'1" x 3'0"	41 sq. ft	Yes
26	Bath	5'2" x 6'8"	34 sq. ft	Yes
27	WC	3'3" x 6'8"	22 sq. ft	Yes
28	Bath	5'3" x 3'7"	19 sq. ft	Yes
29	Wet Bar	19'0" x 14'5"	239 sq. ft	Yes
30	Patio	20'2" x 23'1"	437 sq. ft	No
31	Covered Patio	11'5" x 16'11"	189 sq. ft	No
32	Living Room	21'10" x 19'5"	342 sq. ft	Yes
33	Laundry	19'2" x 10'1"	182 sq. ft	Yes

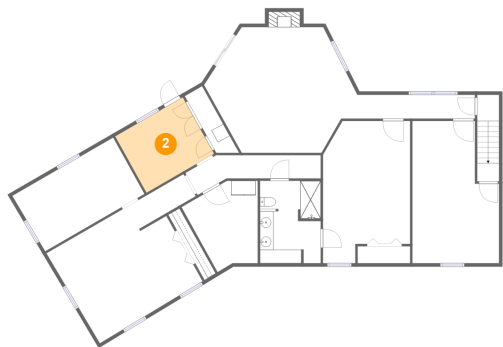
1 Floor 1 - Hall



Max Dimensions: 17'4" x 3'6"  
Calculated Area: 61 sq. ft  
Included: Yes

Heated: Yes  
Finished: Yes  
Enclosed: Yes  
Contiguous: Yes  
Permitted: Yes  
Wet space: No  
Addition: No  
Conversion: No

2 Floor 1 - Room

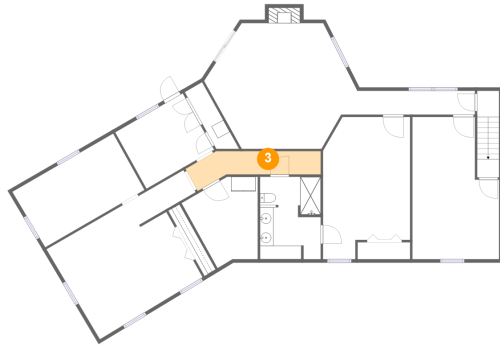


Max Dimensions: 11'6" x 9'5"  
Calculated Area: 110 sq. ft  
Included: No

Heated: Yes  
Finished: No  
Enclosed: Yes  
Contiguous: Yes  
Permitted: Yes  
Wet space: No  
Addition: No  
Conversion: No

4312 Erlene Court, Chester, Chesterfield County, Virginia, United States, 23831

### 3 Floor 1 - Hall



Max Dimensions: 19'11" x 3'5"  
Calculated Area: 70 sq. ft  
Included: Yes

Heated: Yes  
Finished: Yes  
Enclosed: Yes  
Contiguous: Yes  
Permitted: Yes  
Wet space: No  
Addition: No  
Conversion: No

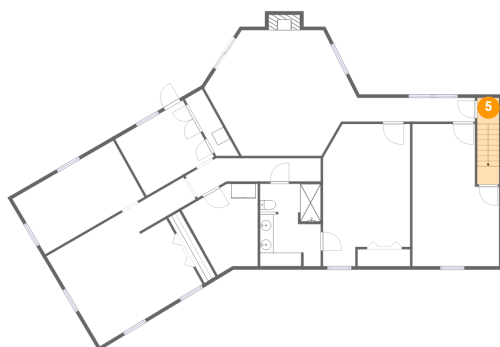
### 4 Floor 1 - Bedroom



Max Dimensions: 12'11" x 21'0"  
Calculated Area: 240 sq. ft  
Included: Yes

Heated: Yes  
Finished: Yes  
Enclosed: Yes  
Contiguous: Yes  
Permitted: Yes  
Wet space: No  
Addition: No  
Conversion: No

### 5 Floor 1 - Hall

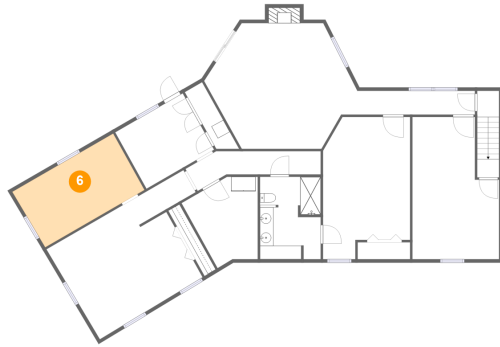


Max Dimensions: 3'3" x 3'10"  
Calculated Area: 41 sq. ft  
Included: Yes

Heated: Yes  
Finished: Yes  
Enclosed: Yes  
Contiguous: Yes  
Permitted: Yes  
Wet space: No  
Addition: No  
Conversion: No

4312 Erlene Court, Chester, Chesterfield County, Virginia, United States, 23831

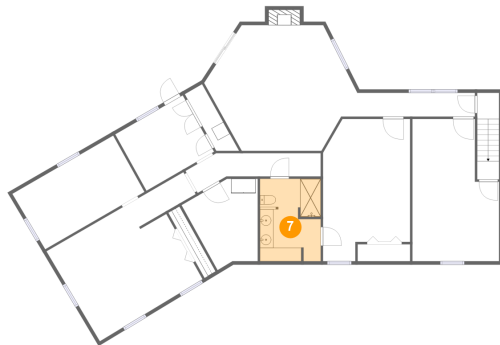
## 6 Floor 1 - Room



Max Dimensions: 17'0" x 9'6"  
Calculated Area: 163 sq. ft  
Included: Yes

Heated: Yes  
Finished: Yes  
Enclosed: Yes  
Contiguous: Yes  
Permitted: Yes  
Wet space: No  
Addition: No  
Conversion: No

## 7 Floor 1 - Bath



Max Dimensions: 9'0" x 12'2"  
Calculated Area: 107 sq. ft  
Included: Yes

Heated: Yes  
Finished: Yes  
Enclosed: Yes  
Contiguous: Yes  
Permitted: Yes  
Wet space: Yes  
Addition: No  
Conversion: No

## 8 Floor 1 - Utility

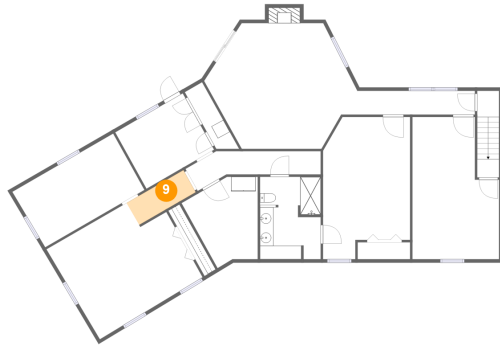


Max Dimensions: 2'11" x 10'6"  
Calculated Area: 31 sq. ft  
Included: No

Heated: Yes  
Finished: No  
Enclosed: Yes  
Contiguous: Yes  
Permitted: Yes  
Wet space: No  
Addition: No  
Conversion: No

4312 Erlene Court, Chester, Chesterfield County, Virginia, United States, 23831

## 9 Floor 1 - Hall



Max Dimensions: 9'7" x 3'8"  
Calculated Area: 36 sq. ft  
Included: Yes

Heated: Yes  
Finished: Yes  
Enclosed: Yes  
Contiguous: Yes  
Permitted: Yes  
Wet space: No  
Addition: No  
Conversion: No

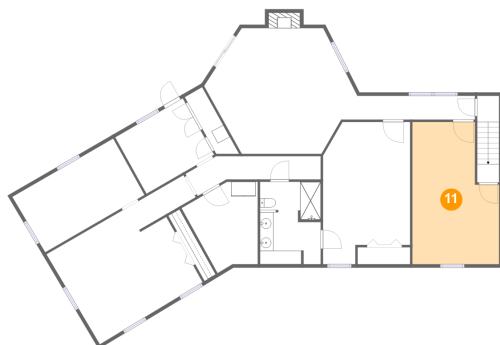
## 10 Floor 1 - Bedroom



Max Dimensions: 18'1" x 15'5"  
Calculated Area: 257 sq. ft  
Included: Yes

Heated: Yes  
Finished: Yes  
Enclosed: Yes  
Contiguous: Yes  
Permitted: Yes  
Wet space: No  
Addition: No  
Conversion: No

## 11 Floor 1 - Storage

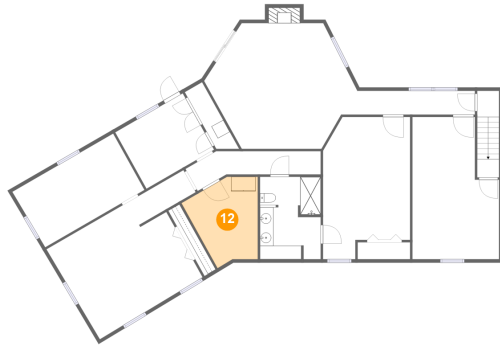


Max Dimensions: 12'10" x 21'0"  
Calculated Area: 236 sq. ft  
Included: No

Heated: No  
Finished: No  
Enclosed: No  
Contiguous: Yes  
Permitted: Yes  
Wet space: No  
Addition: No  
Conversion: No

4312 Erlene Court, Chester, Chesterfield County, Virginia, United States, 23831

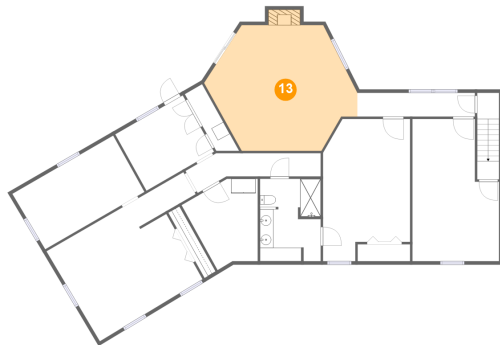
## 12 Floor 1 - Storage



Max Dimensions: 10'5" x 12'1"  
Calculated Area: 107 sq. ft  
Included: No

Heated: No  
Finished: No  
Enclosed: No  
Contiguous: Yes  
Permitted: Yes  
Wet space: No  
Addition: No  
Conversion: No

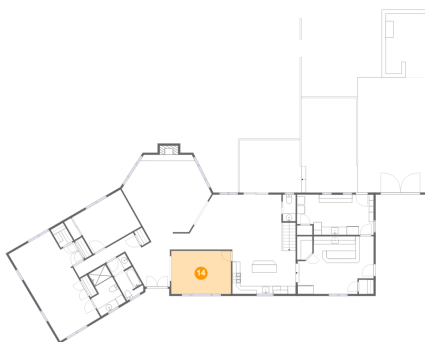
## 13 Floor 1 - Bedroom



Max Dimensions: 21'11" x 18'6"  
Calculated Area: 335 sq. ft  
Included: Yes

Heated: Yes  
Finished: Yes  
Enclosed: Yes  
Contiguous: Yes  
Permitted: Yes  
Wet space: No  
Addition: No  
Conversion: No

## 14 Floor 2 - Dining Room



Max Dimensions: 14'11" x 10'9"  
Calculated Area: 161 sq. ft  
Included: Yes

Heated: Yes  
Finished: Yes  
Enclosed: Yes  
Contiguous: Yes  
Permitted: Yes  
Wet space: No  
Addition: No  
Conversion: No

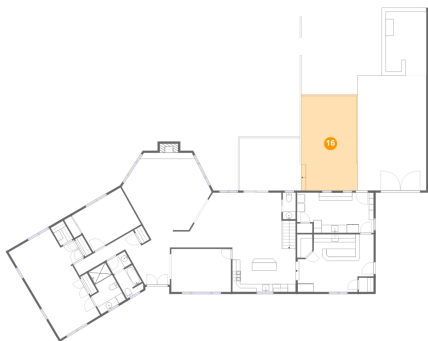
15 Floor 2 - Bedroom



Max Dimensions: 13'11" x 10'7"  
Calculated Area: 147 sq. ft  
Included: Yes

Heated: Yes  
Finished: Yes  
Enclosed: Yes  
Contiguous: Yes  
Permitted: Yes  
Wet space: No  
Addition: No  
Conversion: No

16 Floor 2 - Patio



Max Dimensions: 13'10" x 23'8"  
Calculated Area: 337 sq. ft  
Included: No

Heated: No  
Finished: Yes  
Enclosed: No  
Contiguous: Yes  
Permitted: Yes  
Wet space: No  
Addition: No  
Conversion: No

17 Floor 2 - Breakfast Nook



Max Dimensions: 27'11" x 13'9"  
Calculated Area: 331 sq. ft  
Included: Yes

Heated: Yes  
Finished: Yes  
Enclosed: Yes  
Contiguous: Yes  
Permitted: Yes  
Wet space: No  
Addition: No  
Conversion: No

18 Floor 2 - Kitchen



Max Dimensions: 15'10" x 11'1"  
Calculated Area: 177 sq. ft  
Included: Yes

Heated: Yes  
Finished: Yes  
Enclosed: Yes  
Contiguous: Yes  
Permitted: Yes  
Wet space: No  
Addition: No  
Conversion: No

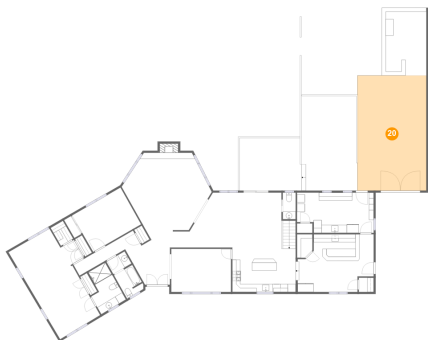
19 Floor 2 - Primary Bedroom



Max Dimensions: 15'6" x 25'3"  
Calculated Area: 318 sq. ft  
Included: Yes

Heated: Yes  
Finished: Yes  
Enclosed: Yes  
Contiguous: Yes  
Permitted: Yes  
Wet space: No  
Addition: No  
Conversion: No

20 Floor 2 - Driveway



Max Dimensions: 17'3" x 28'9"  
Calculated Area: 497 sq. ft  
Included: No

Heated: No  
Finished: No  
Enclosed: No  
Contiguous: Yes  
Permitted: No  
Wet space: No  
Addition: No  
Conversion: No

4312 Erlene Court, Chester, Chesterfield County, Virginia, United States, 23831

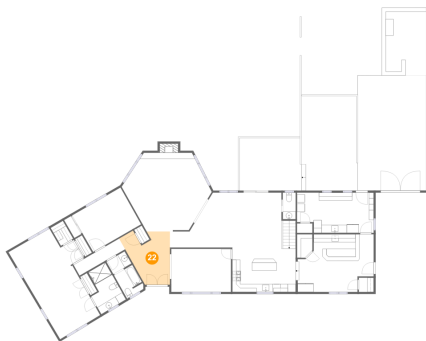
## 21 Floor 2 - Pantry



Max Dimensions: 3'10" x 5'11"  
Calculated Area: 21 sq. ft  
Included: Yes

Heated: Yes  
Finished: Yes  
Enclosed: Yes  
Contiguous: Yes  
Permitted: Yes  
Wet space: No  
Addition: No  
Conversion: No

## 22 Floor 2 - Foyer



Max Dimensions: 11'9" x 13'3"  
Calculated Area: 120 sq. ft  
Included: Yes

Heated: Yes  
Finished: Yes  
Enclosed: Yes  
Contiguous: Yes  
Permitted: Yes  
Wet space: No  
Addition: No  
Conversion: No

## 23 Floor 2 - Deck



Max Dimensions: 15'6" x 13'2"  
Calculated Area: 204 sq. ft  
Included: No

Heated: No  
Finished: Yes  
Enclosed: No  
Contiguous: Yes  
Permitted: Yes  
Wet space: No  
Addition: No  
Conversion: No

4312 Erlene Court, Chester, Chesterfield County, Virginia, United States, 23831

## 24 Floor 2 - Bath



Max Dimensions: 7'0" x 10'8"  
Calculated Area: 65 sq. ft  
Included: Yes

Heated: Yes  
Finished: Yes  
Enclosed: Yes  
Contiguous: Yes  
Permitted: Yes  
Wet space: Yes  
Addition: No  
Conversion: No

## 25 Floor 2 - Hall



Max Dimensions: 13'1" x 3'0"  
Calculated Area: 41 sq. ft  
Included: Yes

Heated: Yes  
Finished: Yes  
Enclosed: Yes  
Contiguous: Yes  
Permitted: Yes  
Wet space: No  
Addition: No  
Conversion: No

## 26 Floor 2 - Bath



Max Dimensions: 5'2" x 6'8"  
Calculated Area: 34 sq. ft  
Included: Yes

Heated: Yes  
Finished: Yes  
Enclosed: Yes  
Contiguous: Yes  
Permitted: Yes  
Wet space: Yes  
Addition: No  
Conversion: No

4312 Erlene Court, Chester, Chesterfield County, Virginia, United States, 23831

## 27 Floor 2 - WC



Max Dimensions: 3'3" x 6'8"  
Calculated Area: 22 sq. ft  
Included: Yes

Heated: Yes  
Finished: Yes  
Enclosed: Yes  
Contiguous: Yes  
Permitted: Yes  
Wet space: Yes  
Addition: No  
Conversion: No

## 28 Floor 2 - Bath



Max Dimensions: 5'3" x 3'7"  
Calculated Area: 19 sq. ft  
Included: Yes

Heated: Yes  
Finished: Yes  
Enclosed: Yes  
Contiguous: Yes  
Permitted: Yes  
Wet space: Yes  
Addition: No  
Conversion: No

## 29 Floor 2 - Wet Bar

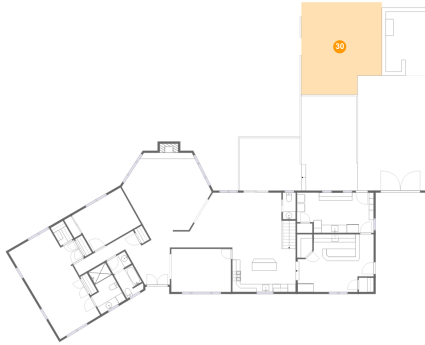


Max Dimensions: 19'0" x 14'5"  
Calculated Area: 239 sq. ft  
Included: Yes

Heated: Yes  
Finished: Yes  
Enclosed: Yes  
Contiguous: Yes  
Permitted: Yes  
Wet space: No  
Addition: No  
Conversion: No

4312 Erlene Court, Chester, Chesterfield County, Virginia, United States, 23831

### 30 Floor 2 - Patio



Max Dimensions: 20'2" x 23'1"  
Calculated Area: 437 sq. ft  
Included: No

Heated: No  
Finished: Yes  
Enclosed: No  
Contiguous: Yes  
Permitted: Yes  
Wet space: No  
Addition: No  
Conversion: No

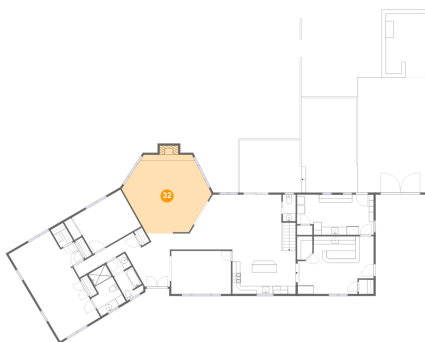
### 31 Floor 2 - Covered Patio



Max Dimensions: 11'5" x 16'11"  
Calculated Area: 189 sq. ft  
Included: No

Heated: No  
Finished: Yes  
Enclosed: No  
Contiguous: Yes  
Permitted: Yes  
Wet space: No  
Addition: No  
Conversion: No

### 32 Floor 2 - Living Room

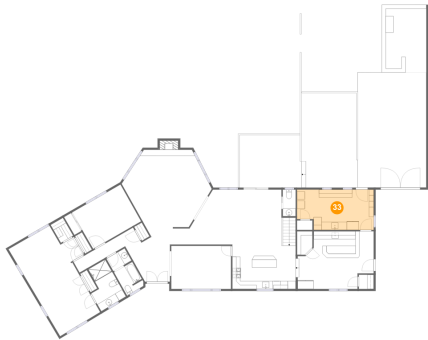


Max Dimensions: 21'10" x 19'5"  
Calculated Area: 342 sq. ft  
Included: Yes

Heated: Yes  
Finished: Yes  
Enclosed: Yes  
Contiguous: Yes  
Permitted: Yes  
Wet space: No  
Addition: No  
Conversion: No

4312 Erlene Court, Chester, Chesterfield County, Virginia, United States, 23831

33 Floor 2 - Laundry



Max Dimensions: 19'2" x 10'1"  
Calculated Area: 182 sq. ft  
Included: Yes

Heated: Yes  
Finished: Yes  
Enclosed: Yes  
Contiguous: Yes  
Permitted: Yes  
Wet space: No  
Addition: No  
Conversion: No