

Home report

115 Circle City Way, Pittsboro, Chatham County, North Carolina,
United States, 27312



Total GLA: 3168 sq. ft
Floor 1: 1903 sq. ft, Floor 2: 1265 sq. ft
Excluded: Garage 436 sq. ft, Screened porch 196 sq. ft, Porch 36 sq. ft, Deck 108 sq. ft, Storage 133 sq. ft, Storage/attic 108 sq. ft

Property summary

 **2** Floors

 **4** Bedrooms

 **3** Bathrooms

Home report

**115 Circle City Way, Pittsboro, Chatham County, North Carolina,
United States, 27312**



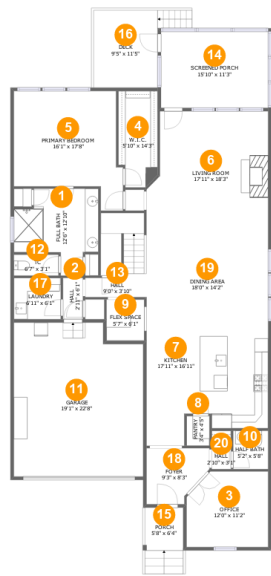
1
Half baths



1
Garages

Home report

115 Circle City Way, Pittsboro, Chatham County, North Carolina,
United States, 27312



Room dimensions

Floor 1

Total:1903sqft Excluded: 776sqft

#		Max Dimensions	sqft	Included
1	Full Bath	12'6" x 12'10"	120 sq. ft	Yes
2	Hall	2'11" x 6'1"	18 sq. ft	Yes
3	Office	12'0" x 11'2"	128 sq. ft	Yes
4	W.I.C.	5'10" x 14'3"	77 sq. ft	Yes
5	Primary Bedroom	16'1" x 17'8"	227 sq. ft	Yes
6	Living Room	17'11" x 18'3"	307 sq. ft	Yes
7	Kitchen	17'11" x 16'11"	263 sq. ft	Yes
8	Pantry	3'4" x 4'5"	15 sq. ft	Yes
9	Flex Space	5'7" x 6'1"	34 sq. ft	Yes
10	Half Bath	5'2" x 5'8"	29 sq. ft	Yes
11	Garage	19'1" x 22'8"	414 sq. ft	No

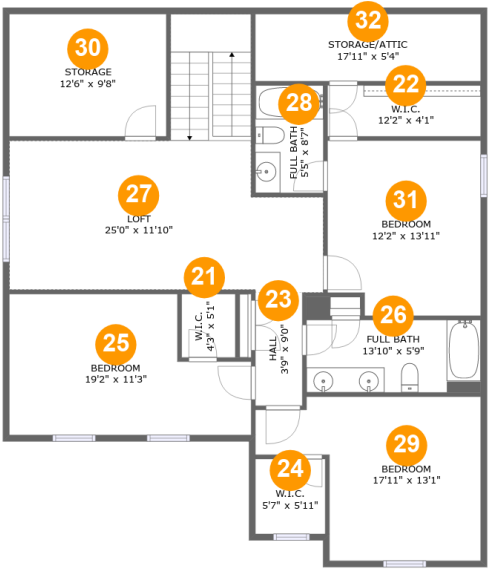
Home report

**115 Circle City Way, Pittsboro, Chatham County, North Carolina,
United States, 27312**

#		Max Dimensions	sqft	Included
12	Tc	6'7" x 3'1"	20 sq. ft	Yes
13	Hall	9'0" x 3'10"	29 sq. ft	Yes
14	Screened Porch	15'10" x 11'3"	178 sq. ft	No
15	Porch	5'8" x 6'4"	36 sq. ft	No
16	Deck	9'5" x 11'5"	108 sq. ft	No
17	Laundry	6'11" x 6'1"	42 sq. ft	Yes
18	Foyer	9'3" x 8'3"	65 sq. ft	Yes
19	Dining Area	18'0" x 14'2"	255 sq. ft	Yes
20	Hall	2'10" x 3'1"	9 sq. ft	Yes

Home report

115 Circle City Way, Pittsboro, Chatham County, North Carolina,
United States, 27312



Room dimensions

Floor 2 Total:1265sqft Excluded: 241sqft

#		Max Dimensions	sqft	Included
21	W.I.C.	4'3" x 5'1"	22 sq. ft	Yes
22	W.I.C.	12'2" x 4'1"	50 sq. ft	Yes
23	Hall	3'9" x 9'0"	34 sq. ft	Yes
24	W.I.C.	5'7" x 5'11"	33 sq. ft	Yes
25	Bedroom	19'2" x 11'3"	185 sq. ft	Yes
26	Full Bath	13'10" x 5'9"	80 sq. ft	Yes
27	Loft	25'0" x 11'10"	337 sq. ft	Yes
28	Full Bath	5'5" x 8'7"	46 sq. ft	Yes
29	Bedroom	17'11" x 13'1"	180 sq. ft	Yes
30	Storage	12'6" x 9'8"	122 sq. ft	No
31	Bedroom	12'2" x 13'11"	165 sq. ft	Yes

Home report

115 Circle City Way, Pittsboro, Chatham County, North Carolina,
United States, 27312

#		Max Dimensions	sqft	Included
32	STORAGE/ATTIC	17'11" x 5'4"	96 sq. ft	No

1 Floor 1 - Full Bath



Max Dimensions: 12'6" x 12'10"
Calculated Area: 120 sq. ft
Included: Yes

Heated: Yes
Finished: Yes
Enclosed: Yes
Contiguous: Yes
Permitted: Yes
Wet space: Yes
Addition: No
Conversion: No

2 Floor 1 - Hall



Max Dimensions: 2'11" x 6'1"
Calculated Area: 18 sq. ft
Included: Yes

Heated: Yes
Finished: Yes
Enclosed: Yes
Contiguous: Yes
Permitted: Yes
Wet space: No
Addition: No
Conversion: No

3 Floor 1 - Office



Max Dimensions: 12'0" x 11'2"
Calculated Area: 128 sq. ft
Included: Yes

Heated: Yes
Finished: Yes
Enclosed: Yes
Contiguous: Yes
Permitted: Yes
Wet space: No
Addition: No
Conversion: No

4 Floor 1 - W.I.C.



Max Dimensions: 5'10" x 14'3"
Calculated Area: 77 sq. ft
Included: Yes

Heated: Yes
Finished: Yes
Enclosed: Yes
Contiguous: Yes
Permitted: Yes
Wet space: No
Addition: No
Conversion: No

5 Floor 1 - Primary Bedroom



Max Dimensions: 16'1" x 17'8"
Calculated Area: 227 sq. ft
Included: Yes

Heated: Yes
Finished: Yes
Enclosed: Yes
Contiguous: Yes
Permitted: Yes
Wet space: No
Addition: No
Conversion: No

115 Circle City Way, Pittsboro, Chatham County, North Carolina,
United States, 27312

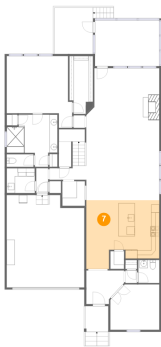
6 Floor 1 - Living Room



Max Dimensions: 17'11" x 18'3"
Calculated Area: 307 sq. ft
Included: Yes

Heated: Yes
Finished: Yes
Enclosed: Yes
Contiguous: Yes
Permitted: Yes
Wet space: No
Addition: No
Conversion: No

7 Floor 1 - Kitchen



Max Dimensions: 17'11" x 16'11"
Calculated Area: 263 sq. ft
Included: Yes

Heated: Yes
Finished: Yes
Enclosed: Yes
Contiguous: Yes
Permitted: Yes
Wet space: No
Addition: No
Conversion: No

8 Floor 1 - Pantry



Max Dimensions: 3'4" x 4'5"
Calculated Area: 15 sq. ft
Included: Yes

Heated: Yes
Finished: Yes
Enclosed: Yes
Contiguous: Yes
Permitted: Yes
Wet space: No
Addition: No
Conversion: No

9 Floor 1 - Flex Space



Max Dimensions: 5'7" x 6'1"
Calculated Area: 34 sq. ft
Included: Yes

Heated: Yes
Finished: Yes
Enclosed: Yes
Contiguous: Yes
Permitted: Yes
Wet space: No
Addition: No
Conversion: No

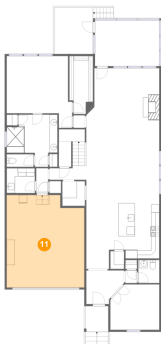
10 Floor 1 - Half Bath



Max Dimensions: 5'2" x 5'8"
Calculated Area: 29 sq. ft
Included: Yes

Heated: Yes
Finished: Yes
Enclosed: Yes
Contiguous: Yes
Permitted: Yes
Wet space: Yes
Addition: No
Conversion: No

11 Floor 1 - Garage



Max Dimensions: 19'1" x 22'8"
Calculated Area: 414 sq. ft
Included: No

Heated: No
Finished: No
Enclosed: Yes
Contiguous: Yes
Permitted: Yes
Wet space: No
Addition: No
Conversion: No

Home report

115 Circle City Way, Pittsboro, Chatham County, North Carolina,
United States, 27312

12 Floor 1 - Tc



Max Dimensions: 6'7" x 3'1"
Calculated Area: 20 sq. ft
Included: Yes

Heated: Yes
Finished: Yes
Enclosed: Yes
Contiguous: Yes
Permitted: Yes
Wet space: Yes
Addition: No
Conversion: No

13 Floor 1 - Hall



Max Dimensions: 9'0" x 3'10"
Calculated Area: 29 sq. ft
Included: Yes

Heated: Yes
Finished: Yes
Enclosed: Yes
Contiguous: Yes
Permitted: Yes
Wet space: No
Addition: No
Conversion: No

14 Floor 1 - Screened Porch



Max Dimensions: 15'10" x 11'3"
Calculated Area: 178 sq. ft
Included: No

Heated: No
Finished: Yes
Enclosed: No
Contiguous: Yes
Permitted: Yes
Wet space: No
Addition: No
Conversion: No

15 Floor 1 - Porch



Max Dimensions: 5'8" x 6'4"
Calculated Area: 36 sq. ft
Included: No

Heated: No
Finished: Yes
Enclosed: No
Contiguous: Yes
Permitted: Yes
Wet space: No
Addition: No
Conversion: No

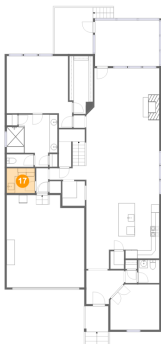
16 Floor 1 - Deck



Max Dimensions: 9'5" x 11'5"
Calculated Area: 108 sq. ft
Included: No

Heated: No
Finished: Yes
Enclosed: No
Contiguous: Yes
Permitted: Yes
Wet space: No
Addition: No
Conversion: No

17 Floor 1 - Laundry



Max Dimensions: 6'11" x 6'1"
Calculated Area: 42 sq. ft
Included: Yes

Heated: Yes
Finished: Yes
Enclosed: Yes
Contiguous: Yes
Permitted: Yes
Wet space: No
Addition: No
Conversion: No

115 Circle City Way, Pittsboro, Chatham County, North Carolina,
United States, 27312

18 Floor 1 - Foyer



Max Dimensions: 9'3" x 8'3"
Calculated Area: 65 sq. ft
Included: Yes

Heated: Yes
Finished: Yes
Enclosed: Yes
Contiguous: Yes
Permitted: Yes
Wet space: No
Addition: No
Conversion: No

19 Floor 1 - Dining Area



Max Dimensions: 18'0" x 14'2"
Calculated Area: 255 sq. ft
Included: Yes

Heated: Yes
Finished: Yes
Enclosed: Yes
Contiguous: Yes
Permitted: Yes
Wet space: No
Addition: No
Conversion: No

20 Floor 1 - Hall



Max Dimensions: 2'10" x 3'1"
Calculated Area: 9 sq. ft
Included: Yes

Heated: Yes
Finished: Yes
Enclosed: Yes
Contiguous: Yes
Permitted: Yes
Wet space: No
Addition: No
Conversion: No

115 Circle City Way, Pittsboro, Chatham County, North Carolina,
United States, 27312

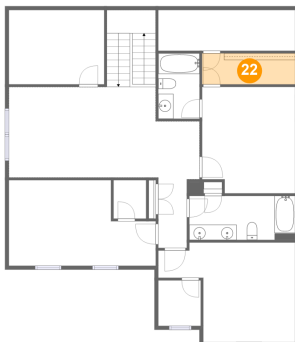
21 Floor 2 - W.I.C.



Max Dimensions: 4'3" x 5'1"
Calculated Area: 22 sq. ft
Included: Yes

Heated: Yes
Finished: Yes
Enclosed: Yes
Contiguous: Yes
Permitted: Yes
Wet space: No
Addition: No
Conversion: No

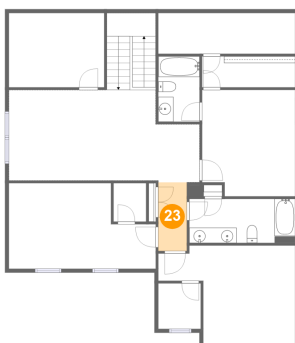
22 Floor 2 - W.I.C.



Max Dimensions: 12'2" x 4'1"
Calculated Area: 50 sq. ft
Included: Yes

Heated: Yes
Finished: Yes
Enclosed: Yes
Contiguous: Yes
Permitted: Yes
Wet space: No
Addition: No
Conversion: No

23 Floor 2 - Hall



Max Dimensions: 3'9" x 9'0"
Calculated Area: 34 sq. ft
Included: Yes

Heated: Yes
Finished: Yes
Enclosed: Yes
Contiguous: Yes
Permitted: Yes
Wet space: No
Addition: No
Conversion: No

115 Circle City Way, Pittsboro, Chatham County, North Carolina,
United States, 27312

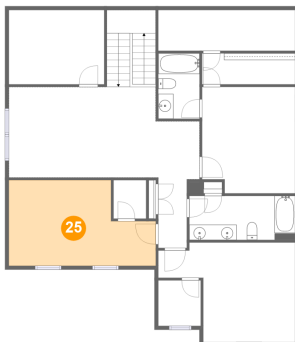
24 Floor 2 - W.I.C.



Max Dimensions: 5'7" x 5'11"
Calculated Area: 33 sq. ft
Included: Yes

Heated: Yes
Finished: Yes
Enclosed: Yes
Contiguous: Yes
Permitted: Yes
Wet space: No
Addition: No
Conversion: No

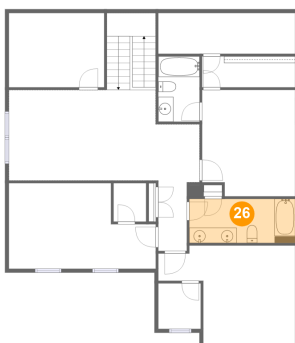
25 Floor 2 - Bedroom



Max Dimensions: 19'2" x 11'3"
Calculated Area: 185 sq. ft
Included: Yes

Heated: Yes
Finished: Yes
Enclosed: Yes
Contiguous: Yes
Permitted: Yes
Wet space: No
Addition: No
Conversion: No

26 Floor 2 - Full Bath

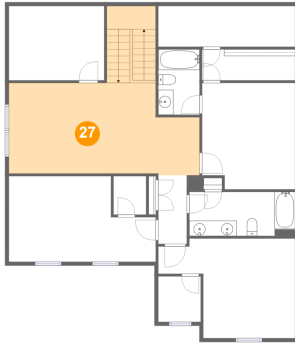


Max Dimensions: 13'10" x 5'9"
Calculated Area: 80 sq. ft
Included: Yes

Heated: Yes
Finished: Yes
Enclosed: Yes
Contiguous: Yes
Permitted: Yes
Wet space: Yes
Addition: No
Conversion: No

115 Circle City Way, Pittsboro, Chatham County, North Carolina,
United States, 27312

27 Floor 2 - Loft



Max Dimensions: 25'0" x 11'10"
Calculated Area: 337 sq. ft
Included: Yes

Heated: Yes
Finished: Yes
Enclosed: Yes
Contiguous: Yes
Permitted: Yes
Wet space: No
Addition: No
Conversion: No

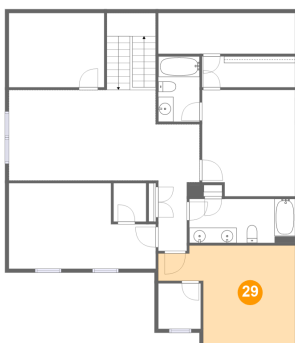
28 Floor 2 - Full Bath



Max Dimensions: 5'5" x 8'7"
Calculated Area: 46 sq. ft
Included: Yes

Heated: Yes
Finished: Yes
Enclosed: Yes
Contiguous: Yes
Permitted: Yes
Wet space: Yes
Addition: No
Conversion: No

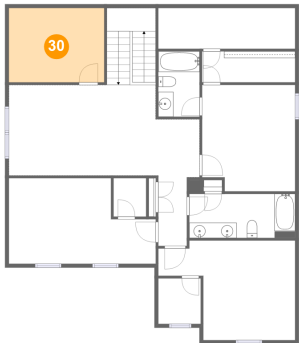
29 Floor 2 - Bedroom



Max Dimensions: 17'11" x 13'1"
Calculated Area: 180 sq. ft
Included: Yes

Heated: Yes
Finished: Yes
Enclosed: Yes
Contiguous: Yes
Permitted: Yes
Wet space: No
Addition: No
Conversion: No

30 Floor 2 - Storage



Max Dimensions: 12'6" x 9'8"
Calculated Area: 122 sq. ft
Included: No

Heated: No
Finished: No
Enclosed: No
Contiguous: Yes
Permitted: Yes
Wet space: No
Addition: No
Conversion: No

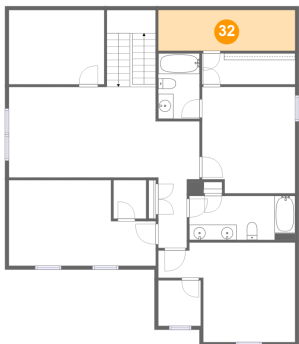
31 Floor 2 - Bedroom



Max Dimensions: 12'2" x 13'11"
Calculated Area: 165 sq. ft
Included: Yes

Heated: Yes
Finished: Yes
Enclosed: Yes
Contiguous: Yes
Permitted: Yes
Wet space: No
Addition: No
Conversion: No

32 Floor 2 - STORAGE/ATTIC



Max Dimensions: 17'11" x 5'4"
Calculated Area: 96 sq. ft
Included: No

Heated: No
Finished: No
Enclosed: Yes
Contiguous: Yes
Permitted: Yes
Wet space: No
Addition: No
Conversion: No