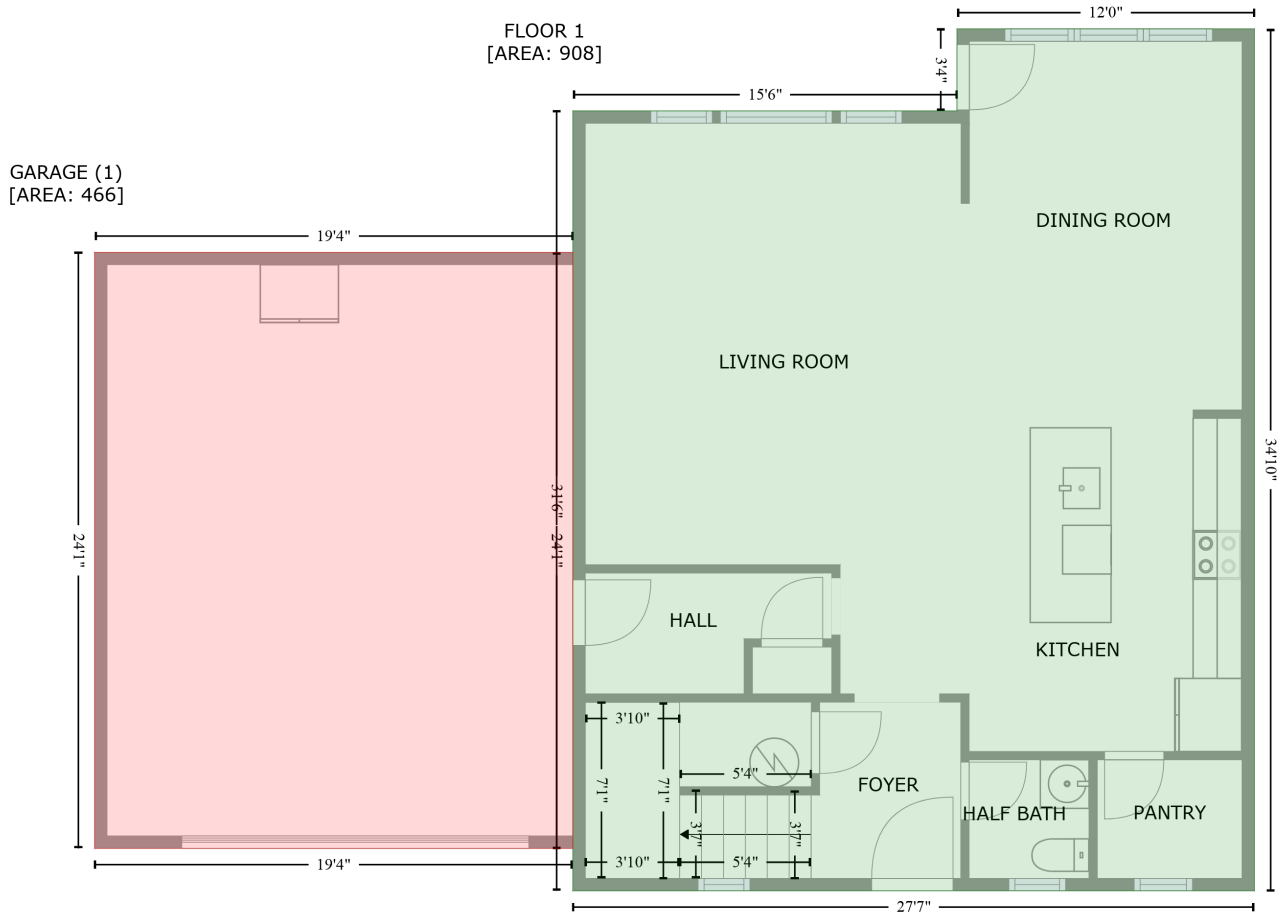


18116 Bridle Run Dr, Louisville, Jefferson County, Kentucky, United States, 40245

Gross Living Area: 2242 sq. ft



Space	Area (sq. ft)	Calculation <small>Coordinate Polygon Area Algorithm using inches</small>
FLOOR 1 (Living area)	908	$-((563.3 + 563.3) * (-1.7 - 416.3) + (563.3 + 232.6) * (416.3 - 416.3) + (232.6 + 232.6) * (416.3 - 38.1) + (232.6 + 418.9) * (38.1 - 38.1) + (418.9 + 418.9) * (38.1 - -1.7) + (418.9 + 563.3) * (-1.7 - -1.7)) * 0.5 * 0.00694$
GARAGE (Non-living area)	466	$-((232.6 + 232.6) * (106.7 - 395.8) + (232.6 + 0.5) * (395.8 - 395.8) + (0.5 + 0.5) * (395.8 - 106.7) + (0.5 + 232.6) * (106.7 - 106.7)) * 0.5 * 0.00694$

18116 Bridle Run Dr, Louisville, Jefferson County, Kentucky, United States, 40245

Gross Living Area: 2242 sq. ft



Space	Area (sq. ft)	Calculation <small>Coordinate Polygon Area Algorithm using inches</small>
FLOOR 2 (Living area)	1334	$-((563.3 + 563.3) * (38.1 - 416.3) + (563.3 + 232.6) * (416.3 - 416.3) + (232.6 + 232.6) * (416.3 - 395.8) + (232.6 + 0.5) * (395.8 - 395.8) + (0.5 + 0.5) * (395.8 - 106.7) + (0.5 + 232.6) * (106.7 - 106.7) + (232.6 + 232.6) * (106.7 - 38.1) + (232.6 + 563.3) * (38.1 - 38.1)) * 0.5 * 0.00694$