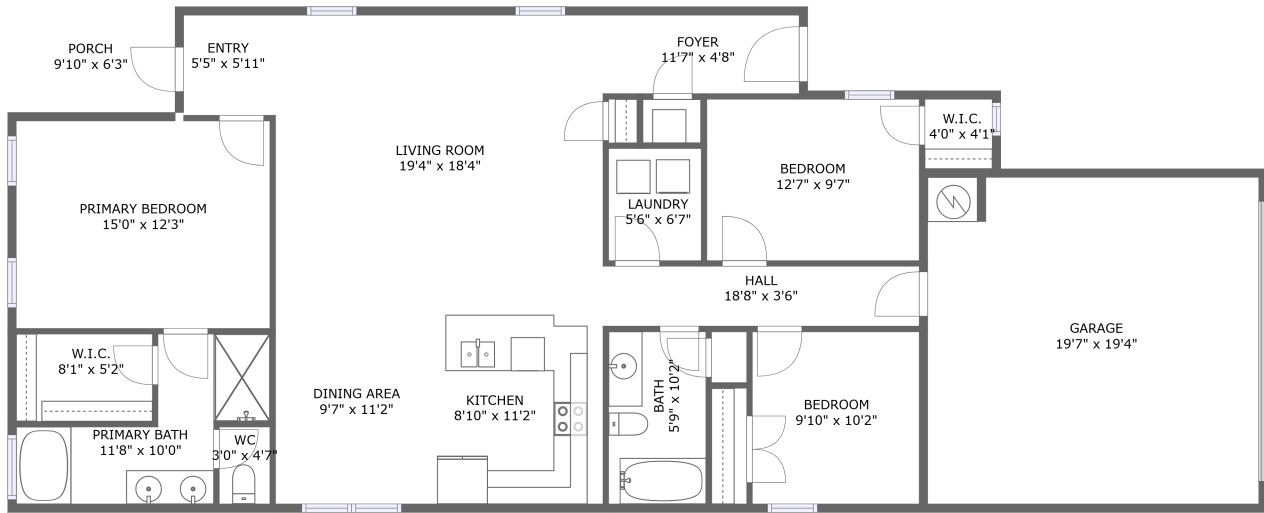


135 Brooklawn Drive, Harvest, Madison County, Alabama, United States, 35749



FLOOR 1

Property Summary



1 floors



3 bedrooms



2 bathrooms



2,021 total sqft

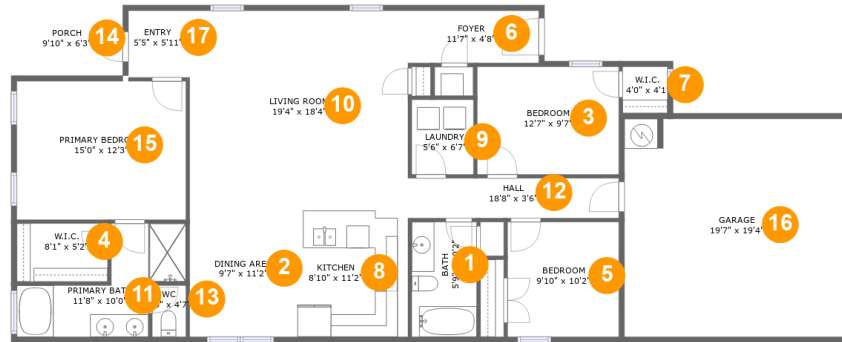


1 garages



1,553 Gross Living Area sqft

135 Brooklawn Drive, Harvest, Madison County, Alabama, United States, 35749



Room Dimensions

Floor 1

Total sqft: 2021

Living area: 1553

#	Room name	Dimensions	Area (sqft)	Counted as Living Area
1	Bath	5'9" x 10'2"	59 sq. ft	Yes
2	Dining Area	9'7" x 11'2"	107 sq. ft	Yes
3	Bedroom	12'7" x 9'7"	120 sq. ft	Yes
4	W.i.c.	8'1" x 5'2"	42 sq. ft	Yes
5	Bedroom	9'10" x 10'2"	101 sq. ft	Yes
6	Foyer	11'7" x 4'8"	54 sq. ft	Yes
7	W.i.c.	4'0" x 4'1"	16 sq. ft	Yes
8	Kitchen	8'10" x 11'2"	107 sq. ft	Yes
9	Laundry	5'6" x 6'7"	36 sq. ft	Yes
10	Living Room	19'4" x 18'4"	346 sq. ft	Yes
11	Primary Bath	11'8" x 10'0"	88 sq. ft	Yes

**135 Brooklawn Drive, Harvest, Madison County,
Alabama, United States, 35749**

#	Room name	Dimensions	Area (sqft)	Counted as Living Area
12	Hall	18'8" x 3'6"	66 sq. ft	Yes
13	Wc	3'0" x 4'7"	14 sq. ft	Yes
14	Porch	9'10" x 6'3"	62 sq. ft	No
15	Primary Bedroom	15'0" x 12'3"	184 sq. ft	Yes
16	Garage	19'7" x 19'4"	377 sq. ft	No
17	Entry	5'5" x 5'11"	32 sq. ft	Yes

135 Brooklawn Drive, Harvest, Madison County, Alabama, United States, 35749

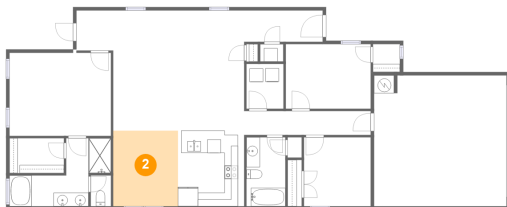
1 Floor 1 - Bath



Dimensions: 5'9" x 10'2"
Area: 59 sq. ft
Counted as Living Area:
Yes

Heated: Yes
Finished: Yes
Enclosed: Yes
Contiguous:
Yes
Permitted: Yes
Wet Space: Yes
Addition: No
Conversion: No

2 Floor 1 - Dining Area

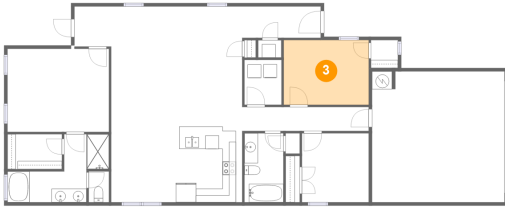


Dimensions: 9'7" x 11'2"
Area: 107 sq. ft
Counted as Living Area:
Yes

Heated: Yes
Finished: Yes
Enclosed: Yes
Contiguous:
Yes
Permitted: Yes
Wet Space: No
Addition: No
Conversion: No

135 Brooklawn Drive, Harvest, Madison County, Alabama, United States, 35749

3 Floor 1 - Bedroom



Dimensions: 12'7" x 9'7"
Area: 120 sq. ft
Counted as Living Area:
Yes

Heated: Yes
Finished: Yes
Enclosed: Yes
Contiguous:
Yes
Permitted: Yes
Wet Space: No
Addition: No
Conversion: No

4 Floor 1 - W.i.c.



Dimensions: 8'1" x 5'2"
Area: 42 sq. ft
Counted as Living Area:
Yes

Heated: Yes
Finished: Yes
Enclosed: Yes
Contiguous:
Yes
Permitted: Yes
Wet Space: No
Addition: No
Conversion: No

5 Floor 1 - Bedroom



Dimensions: 9'10" x 10'2"
Area: 101 sq. ft
Counted as Living Area:
Yes

Heated: Yes
Finished: Yes
Enclosed: Yes
Contiguous:
Yes
Permitted: Yes
Wet Space: No
Addition: No
Conversion: No

135 Brooklawn Drive, Harvest, Madison County, Alabama, United States, 35749

6 Floor 1 - Foyer



Dimensions: 11'7" x 4'8"
Area: 54 sq. ft
Counted as Living Area:
Yes

Heated: Yes
Finished: Yes
Enclosed: Yes
Contiguous:
Yes
Permitted: Yes
Wet Space: No
Addition: No
Conversion: No

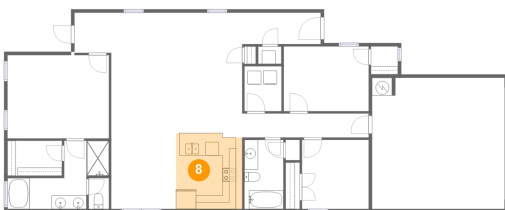
7 Floor 1 - W.i.c.



Dimensions: 4'0" x 4'1"
Area: 16 sq. ft
Counted as Living Area:
Yes

Heated: Yes
Finished: Yes
Enclosed: Yes
Contiguous:
Yes
Permitted: Yes
Wet Space: No
Addition: No
Conversion: No

8 Floor 1 - Kitchen

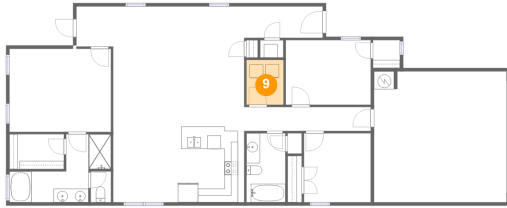


Dimensions: 8'10" x 11'2"
Area: 107 sq. ft
Counted as Living Area:
Yes

Heated: Yes
Finished: Yes
Enclosed: Yes
Contiguous:
Yes
Permitted: Yes
Wet Space: No
Addition: No
Conversion: No

135 Brooklawn Drive, Harvest, Madison County, Alabama, United States, 35749

9 Floor 1 - Laundry



Dimensions: 5'6" x 6'7"
Area: 36 sq. ft
Counted as Living Area:
Yes

Heated: Yes
Finished: Yes
Enclosed: Yes
Contiguous:
Yes
Permitted: Yes
Wet Space: No
Addition: No
Conversion: No

10 Floor 1 - Living Room



Dimensions: 19'4" x 18'4"
Area: 346 sq. ft
Counted as Living Area:
Yes

Heated: Yes
Finished: Yes
Enclosed: Yes
Contiguous:
Yes
Permitted: Yes
Wet Space: No
Addition: No
Conversion: No

11 Floor 1 - Primary Bath

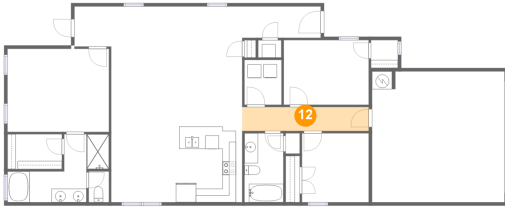


Dimensions: 11'8" x 10'0"
Area: 88 sq. ft
Counted as Living Area:
Yes

Heated: Yes
Finished: Yes
Enclosed: Yes
Contiguous:
Yes
Permitted: Yes
Wet Space: Yes
Addition: No
Conversion: No

135 Brooklawn Drive, Harvest, Madison County, Alabama, United States, 35749

12 Floor 1 - Hall



Dimensions: 18'8" x 3'6"
Area: 66 sq. ft
Counted as Living Area:
Yes

Heated: Yes
Finished: Yes
Enclosed: Yes
Contiguous:
Yes
Permitted: Yes
Wet Space: No
Addition: No
Conversion: No

13 Floor 1 - Wc



Dimensions: 3'0" x 4'7"
Area: 14 sq. ft
Counted as Living Area:
Yes

Heated: Yes
Finished: Yes
Enclosed: Yes
Contiguous:
Yes
Permitted: Yes
Wet Space: Yes
Addition: No
Conversion: No

14 Floor 1 - Porch



Dimensions: 9'10" x 6'3"
Area: 62 sq. ft
Counted as Living Area: No

Heated: No
Finished: Yes
Enclosed: No
Contiguous: Yes
Permitted: Yes
Wet Space: No
Addition: No
Conversion: No

135 Brooklawn Drive, Harvest, Madison County, Alabama, United States, 35749

15 Floor 1 - Primary Bedroom



Dimensions: 15'0" x 12'3"
Area: 184 sq. ft
Counted as Living Area:
Yes

Heated: Yes
Finished: Yes
Enclosed: Yes
Contiguous:
Yes
Permitted: Yes
Wet Space: No
Addition: No
Conversion: No

16 Floor 1 - Garage



Dimensions: 19'7" x 19'4"
Area: 377 sq. ft
Counted as Living Area: No

Heated: No
Finished: No
Enclosed: Yes
Contiguous: Yes
Permitted: Yes
Wet Space: No
Addition: No
Conversion: No

17 Floor 1 - Entry



Dimensions: 5'5" x 5'11"
Area: 32 sq. ft
Counted as Living Area:
Yes

Heated: Yes
Finished: Yes
Enclosed: Yes
Contiguous:
Yes
Permitted: Yes
Wet Space: No
Addition: No
Conversion: No