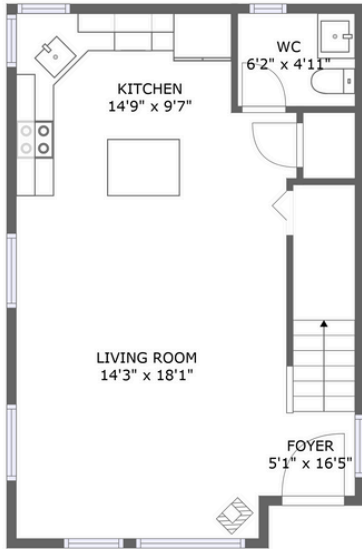
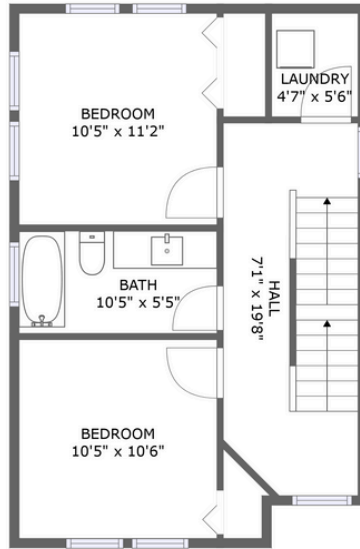


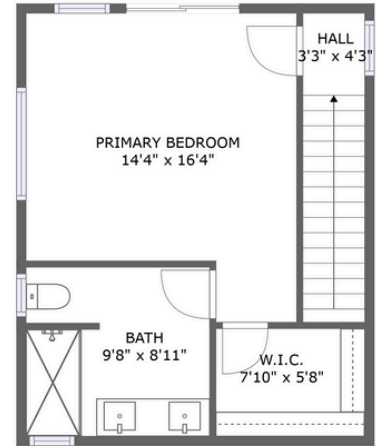
# 8433 22nd Avenue Southwest, South Delridge, Seattle, King County, Washington, United States,



FLOOR 1




FLOOR 2





FLOOR 3

## Property Summary


 0 garages


 3 bedrooms

 2 bathrooms

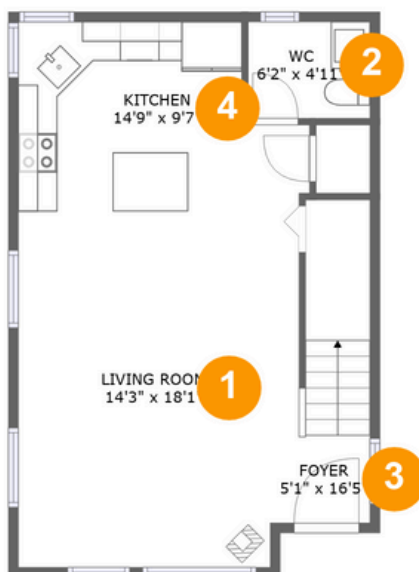
 1 half baths

 3 floors

 1,505  
Gross Living  
Area sqft

 1,505  
total sqft

# 8433 22nd Avenue Southwest, South Delridge, Seattle, King County, Washington, United States,



## Room Dimensions

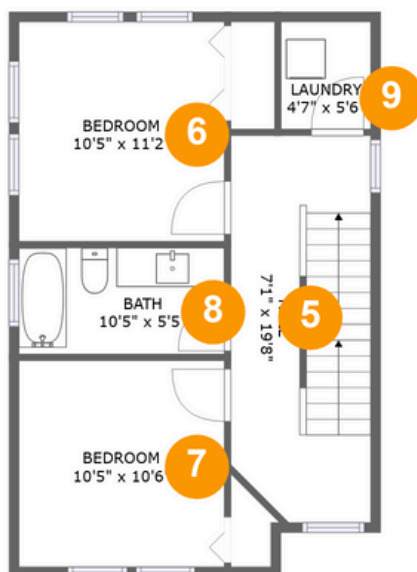
Floor 1

Total sqft: 532

Living area: 532

#	Room name	Dimensions	Area (sqft)	Counted as Living Area
1	Living Room	14'3" x 18'1"	249 sq. ft	Yes
2	Wc	6'2" x 4'11"	30 sq. ft	Yes
3	Foyer	5'1" x 16'5"	63 sq. ft	Yes
4	Kitchen	14'9" x 9'7"	124 sq. ft	Yes

**8433 22nd Avenue Southwest, South Delridge,  
Seattle, King County, Washington, United States,**



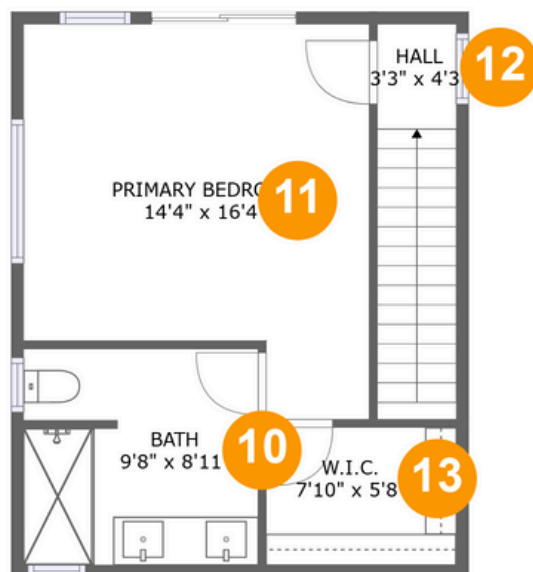
## Room Dimensions

Floor 2

Total sqft: 532

Living area: 532

#	Room name	Dimensions	Area (sqft)	Counted as Living Area
5	Hall	7'1" x 19'8"	136 sq. ft	Yes
6	Bedroom	10'5" x 11'2"	117 sq. ft	Yes
7	Bedroom	10'5" x 10'6"	110 sq. ft	Yes
8	Bath	10'5" x 5'5"	57 sq. ft	Yes
9	Laundry	4'7" x 5'6"	25 sq. ft	Yes

**8433 22nd Avenue Southwest, South Delridge,  
Seattle, King County, Washington, United States,****Room Dimensions****Floor 3****Total sqft: 441****Living area: 441**

#	Room name	Dimensions	Area (sqft)	Counted as Living Area
10	Bath	9'8" x 8'11"	85 sq. ft	Yes
11	Primary Bedroom	14'4" x 16'4"	201 sq. ft	Yes
12	Hall	3'3" x 4'3"	53 sq. ft	Yes
13	W.i.c.	7'10" x 5'8"	45 sq. ft	Yes

# 8433 22nd Avenue Southwest, South Delridge, Seattle, King County, Washington, United States,

## 1 Floor 1 - Living Room



Dimensions: 14'3" x 18'1"  
Area: 249 sq. ft  
Counted as Living Area:  
Yes

Heated: Yes  
Finished: Yes  
Enclosed: Yes  
Contiguous:  
Yes Permitted:  
Yes Wet  
Space: No  
Addition: No  
Conversion: No

## 2 Floor 1 - Wc



Dimensions: 6'2" x 4'11"  
Area: 30 sq. ft  
Counted as Living Area:  
Yes

Heated: Yes  
Finished: Yes  
Enclosed: Yes  
Contiguous:  
Yes  
Permitted: Yes  
Wet Space: Yes  
Addition: No  
Conversion: No

**8433 22nd Avenue Southwest, South Delridge,  
Seattle, King County, Washington, United States,****3 Floor 1 - Foyer**

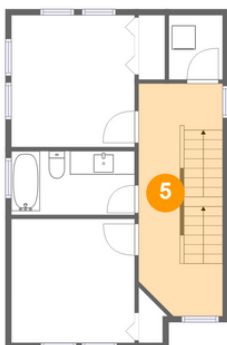
Dimensions: 5'1" x 16'5"  
Area: 63 sq. ft  
Counted as Living Area:  
Yes

Heated: Yes  
Finished: Yes  
Enclosed: Yes  
Contiguous:  
Yes Permitted:  
Yes Wet  
Space: No  
Addition: No  
Conversion: No

**4 Floor 1 - Kitchen**

Dimensions: 14'9" x 9'7"  
Area: 124 sq. ft  
Counted as Living Area:  
Yes

Heated: Yes  
Finished: Yes  
Enclosed: Yes  
Contiguous:  
Yes Permitted:  
Yes Wet  
Space: No  
Addition: No  
Conversion: No

**5 Floor 2 - Hall**

Dimensions: 7'1" x 19'8"  
Area: 136 sq. ft  
Counted as Living Area:  
Yes

Heated: Yes  
Finished: Yes  
Enclosed: Yes  
Contiguous:  
Yes Permitted:  
Yes Wet  
Space: No  
Addition: No  
Conversion: No

# 8433 22nd Avenue Southwest, South Delridge, Seattle, King County, Washington, United States,

## 6 Floor 2 - Bedroom



Dimensions: 10'5" x 11'2"  
Area: 117 sq. ft  
Counted as Living Area:  
Yes

Heated: Yes  
Finished: Yes  
Enclosed: Yes  
Contiguous:  
Yes Permitted:  
Yes Wet  
Space: No  
Addition: No  
Conversion: No

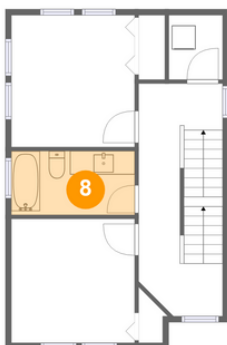
## 7 Floor 2 - Bedroom



Dimensions: 10'5" x 10'6"  
Area: 110 sq. ft  
Counted as Living Area:  
Yes

Heated: Yes  
Finished: Yes  
Enclosed: Yes  
Contiguous:  
Yes Permitted:  
Yes Wet  
Space: No  
Addition: No  
Conversion: No

## 8 Floor 2 - Bath



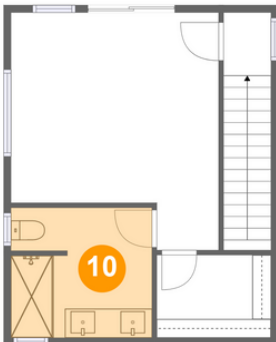
Dimensions: 10'5" x 5'5"  
Area: 57 sq. ft  
Counted as Living Area:  
Yes

Heated: Yes  
Finished: Yes  
Enclosed: Yes  
Contiguous:  
Yes  
Permitted: Yes  
Wet Space: Yes  
Addition: No  
Conversion: No

**8433 22nd Avenue Southwest, South Delridge,  
Seattle, King County, Washington, United States,****9 Floor 2 - Laundry**

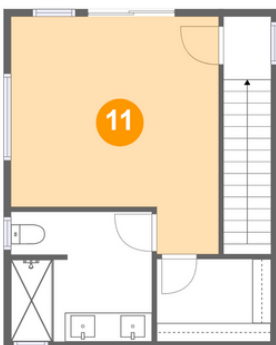
Dimensions: 4'7" x 5'6"  
Area: 25 sq. ft  
Counted as Living Area:  
Yes

Heated: Yes  
Finished: Yes  
Enclosed: Yes  
Contiguous:  
Yes Permitted:  
Yes Wet  
Space: No  
Addition: No  
Conversion: No

**10 Floor 3 - Bath**

Dimensions: 9'8" x 8'11"  
Area: 85 sq. ft  
Counted as Living Area:  
Yes

Heated: Yes  
Finished: Yes  
Enclosed: Yes  
Contiguous:  
Yes  
Permitted: Yes  
Wet Space: Yes  
Addition: No  
Conversion: No

**11 Floor 3 - Primary Bedroom**

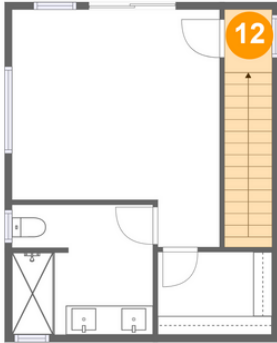
Dimensions: 14'4" x 16'4"  
Area: 201 sq. ft  
Counted as Living Area:  
Yes

Heated: Yes  
Finished: Yes  
Enclosed: Yes  
Contiguous:  
Yes Permitted:  
Yes Wet  
Space: No  
Addition: No  
Conversion: No



# 8433 22nd Avenue Southwest, South Delridge, Seattle, King County, Washington, United States,

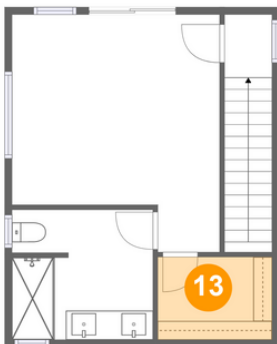
## 12 Floor 3 - Hall



Dimensions: 3'3" x 4'3"  
Area: 53 sq. ft  
Counted as Living Area:  
Yes

Heated: Yes  
Finished: Yes  
Enclosed: Yes  
Contiguous:  
Yes Permitted:  
Yes Wet  
Space: No  
Addition: No  
Conversion: No

## 13 Floor 3 - W.i.c.



Dimensions: 7'10" x 5'8"  
Area: 45 sq. ft  
Counted as Living Area:  
Yes

Heated: Yes  
Finished: Yes  
Enclosed: Yes  
Contiguous:  
Yes Permitted:  
Yes Wet  
Space: No  
Addition: No  
Conversion: No