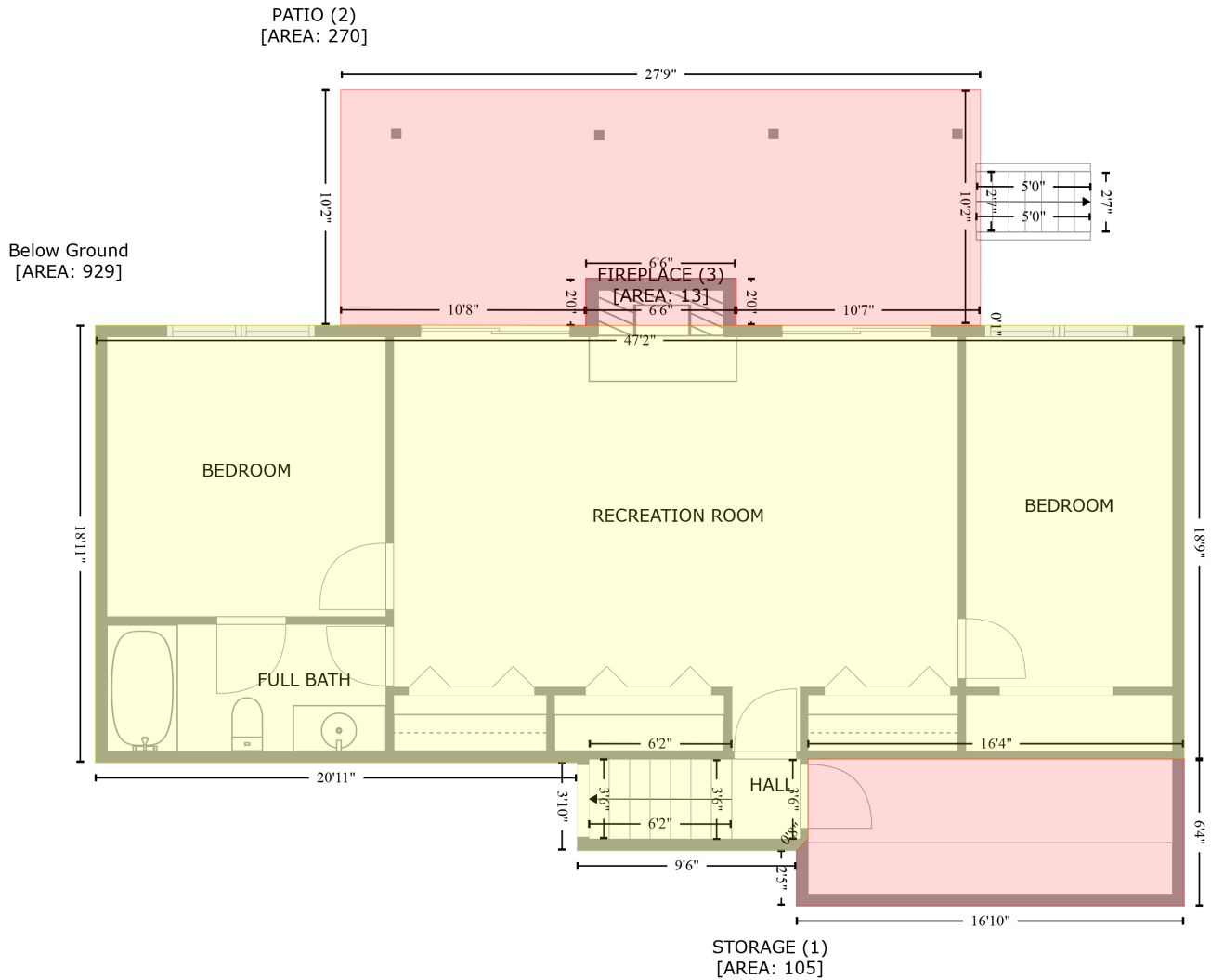


# 16 Shipmaster Court, Clover, York County, South Carolina, United States, 29710

Gross Living Area: 1971 sq. ft



Space	Area (sq. ft)	Calculation <small>Coordinate Polygon Area Algorithm using inches</small>
Below Ground (Living area)	929	$-((566.3 + 566.3) * (181.7 - 407.1) + (566.3 + 370.6) * (407.1 - 407.1) + (370.6 + 370.6) * (407.1 - 448.7) + (370.6 + 364.6) * (448.7 - 454.7) + (364.6 + 250.6) * (454.7 - 454.7) + (250.6 + 250.6) * (454.7 - 409.1) + (250.6 + 0) * (409.1 - 409.1) + (0 + 0) * (409.1 - 181.7) + (0 + 566.3) * (181.7 - 181.7)) * 0.5 * 0.00694$
STORAGE (Non-living area)	105	$-((566.3 + 566.3) * (407.1 - 483.4) + (566.3 + 364.6) * (483.4 - 483.4) + (364.6 + 364.6) * (483.4 - 454.7) + (364.6 + 370.6) * (454.7 - 448.7) + (370.6 + 370.6) * (448.7 - 407.1) + (370.6 + 566.3) * (407.1 - 407.1)) * 0.5 * 0.00694$
PATIO (Non-living area)	270	$-((460.4 + 460.4) * (59.1 - 180.7) + (460.4 + 460.4) * (180.7 - 181.7) + (460.4 + 333.3) * (181.7 - 181.7) + (333.3 + 333.3) * (181.7 - 157.3) + (333.3 + 255.1) * (157.3 - 157.3) + (255.1 + 255.1) * (157.3 - 181.7) + (255.1 + 127.6) * (181.7 - 181.6) + (127.6 + 127.6) * (181.6 - 59.1) + (127.6 + 460.4) * (59.1 - 59.1)) * 0.5 * 0.00694$

# 16 Shipmaster Court, Clover, York County, South Carolina, United States, 29710

Gross Living Area: 1971 sq. ft

Space	Area (sq. ft)	Calculation <small>Coordinate Polygon Area Algorithm using inches</small>
FIREPLACE (Non-living area)	13	$-((333.3 + 333.3) * (157.3 - 181.7) + (333.3 + 255.1) * (181.7 - 181.7) + (255.1 + 255.1) * (181.7 - 157.3) + (255.1 + 333.3) * (157.3 - 157.3)) * 0.5 * 0.00694$

# 16 Shipmaster Court, Clover, York County, South Carolina, United States, 29710

Gross Living Area: 1971 sq. ft



Space	Area (sq. ft)	Calculation <small>Coordinate Polygon Area Algorithm using inches</small>
FLOOR 2 (Living area)	1971	$-\left((566.3 + 566.3) * (181.7 - 613.2) + (566.3 + 364.6) * (613.2 - 613.2) + (364.6 + 364.6) * (613.2 - 591.3) + (364.6 + 298.6) * (591.3 - 591.3) + (298.6 + 298.6) * (591.3 - 758.7) + (298.6 + 0) * (758.7 - 758.7) + (0 + 0) * (758.7 - 607.4) + (0 + 99.7) * (607.4 - 607.4) + (99.7 + 99.7) * (607.4 - 581.9) + (99.7 + 0) * (581.9 - 581.9) + (0 + 0) * (581.9 - 181.7) + (0 + 566.3) * (181.7 - 181.7)\right) * 0.5 * 0.00694$
LOW CEILING	18	$-\left((99.7 + 99.7) * (581.9 - 607.4) + (99.7 + 0) * (607.4 - 607.4) + (0 + 0) * (607.4 - 581.9) + (0 + 0) * (581.9 - 607.4) + (0 + 0) * (607.4 - 581.9) + (0 + 0) * (581.9 - 607.4)\right) * 0.5 * 0.00694$

# 16 Shipmaster Court, Clover, York County, South Carolina, United States, 29710

Gross Living Area: 1971 sq. ft

Space	Area (sq. ft)	Calculation <small>Coordinate Polygon Area Algorithm using inches</small>
(Non-living area)		$99.7 * (581.9 - 581.9) * 0.5 * 0.00694$
DECK (Non-living area)	297	$-((119.3 + 548.5) * (66.8 - 66.9) + (548.5 + 548.5) * (66.9 - 133.4) + (548.5 + 454.1) * (133.4 - 133.3) + (454.1 + 454.1) * (133.3 - 181.7) + (454.1 + 333.3) * (181.7 - 181.7) + (333.3 + 333.3) * (181.7 - 157.3) + (333.3 + 255.1) * (157.3 - 157.3) + (255.1 + 255.1) * (157.3 - 181.7) + (255.1 + 119.3) * (181.7 - 181.7) + (119.3 + 119.3) * (181.7 - 66.8)) * 0.5 * 0.00694$
FIREPLACE (Non-living area)	13	$-((333.3 + 333.3) * (157.3 - 181.7) + (333.3 + 255.1) * (181.7 - 181.7) + (255.1 + 255.1) * (181.7 - 157.3) + (255.1 + 333.3) * (157.3 - 157.3)) * 0.5 * 0.00694$