

403 Double Tree Dr, Greeley, CO, US



Property Summary

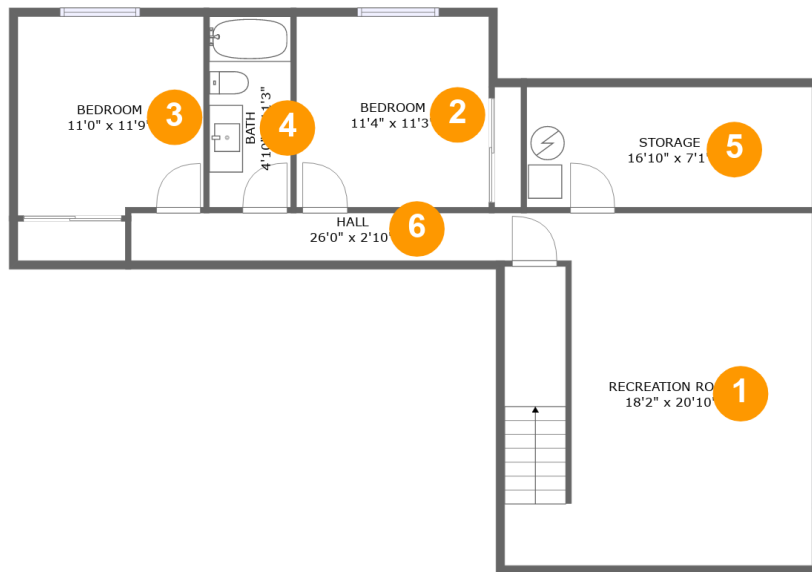
1 garages **4** bedrooms **3** bathrooms **1** half baths

3 floors

2,814 Gross Living Area sqft

3,923 total sqft

403 Double Tree Dr, Greeley, CO, US



Room Dimensions

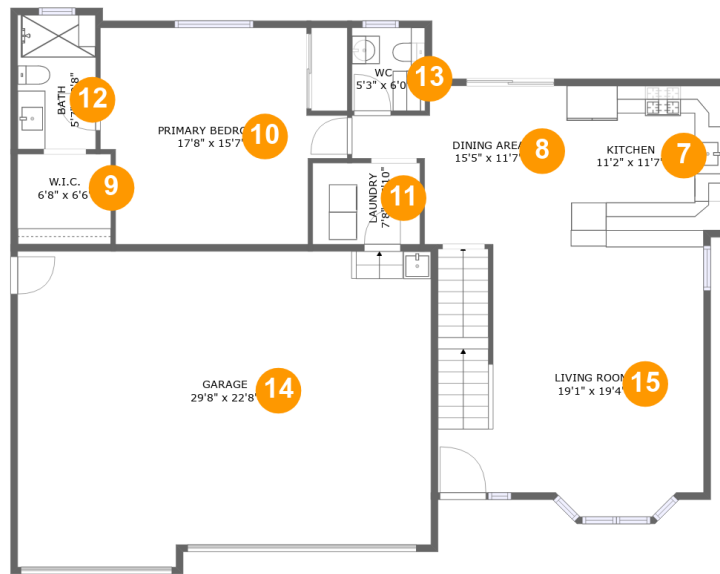
Floor 1

Total sqft: 1006

Living area: 874

#	Room name	Dimensions	Area (sqft)	Counted as Living Area
1	Recreation Room	18'2" x 20'10"	362 sq. ft	Yes
2	Bedroom	11'4" x 11'3"	128 sq. ft	Yes
3	Bedroom	11'0" x 11'9"	127 sq. ft	Yes
4	Bath	4'10" x 11'3"	54 sq. ft	Yes
5	Storage	16'10" x 7'1"	120 sq. ft	No
6	Hall	26'0" x 2'10"	73 sq. ft	Yes

403 Double Tree Dr, Greeley, CO, US



Room Dimensions

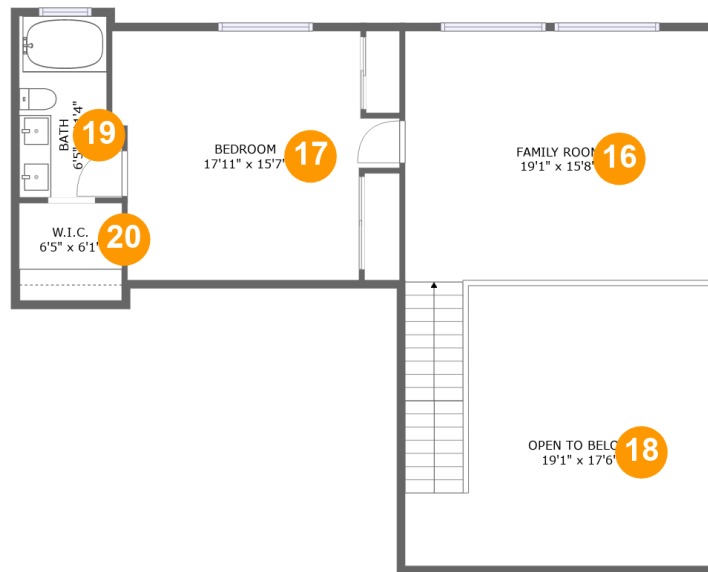
Floor 2

Total sqft: 1813

Living area: 1140

#	Room name	Dimensions	Area (sqft)	Counted as Living Area
7	Kitchen	11'2" x 11'7"	127 sq. ft	Yes
8	Dining Area	15'5" x 11'7"	133 sq. ft	Yes
9	W.i.c.	6'8" x 6'6"	43 sq. ft	Yes
10	Primary Bedroom	17'8" x 15'7"	232 sq. ft	Yes
11	Laundry	7'8" x 5'10"	45 sq. ft	Yes
12	Bath	5'7" x 9'8"	54 sq. ft	Yes
13	Wc	5'3" x 6'0"	31 sq. ft	Yes
14	Garage	29'8" x 22'8"	644 sq. ft	No
15	Living Room	19'1" x 19'4"	345 sq. ft	Yes

403 Double Tree Dr, Greeley, CO, US



Room Dimensions

Floor 3

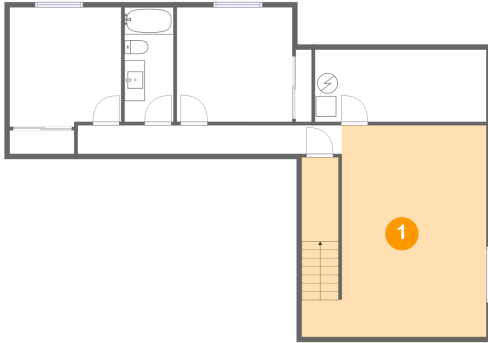
Total sqft: 1104

Living area: 800

#	Room name	Dimensions	Area (sqft)	Counted as Living Area
16	Family Room	19'1" x 15'8"	354 sq. ft	Yes
17	Bedroom	17'11" x 15'7"	239 sq. ft	Yes
18	Open To Below	19'1" x 17'6"	283 sq. ft	No
19	Bath	6'5" x 11'4"	66 sq. ft	Yes
20	W.i.c.	6'5" x 6'1"	39 sq. ft	Yes

403 Double Tree Dr, Greeley, CO, US

1 Floor 1 - Recreation Room



Dimensions: 18'2" x 20'10"
Area: 362 sq. ft
Counted as Living Area:
Yes

Heated: Yes
Finished: Yes
Enclosed: Yes
Contiguous:
Yes
Permitted: Yes
Wet Space: No
Addition: No
Conversion: No

2 Floor 1 - Bedroom

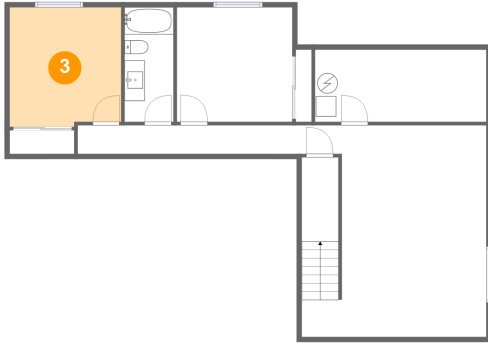


Dimensions: 11'4" x 11'3"
Area: 128 sq. ft
Counted as Living Area:
Yes

Heated: Yes
Finished: Yes
Enclosed: Yes
Contiguous:
Yes
Permitted: Yes
Wet Space: No
Addition: No
Conversion: No

403 Double Tree Dr, Greeley, CO, US

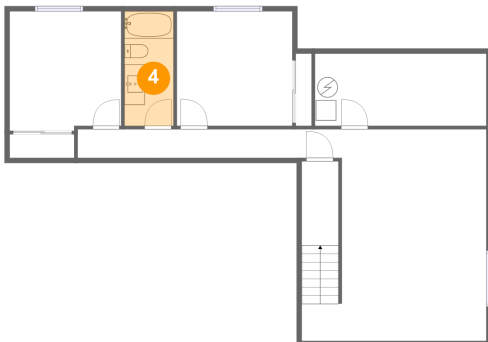
3 Floor 1 - Bedroom



Dimensions: 11'0" x 11'9"
Area: 127 sq. ft
Counted as Living Area:
Yes

Heated: Yes
Finished: Yes
Enclosed: Yes
Contiguous:
Yes
Permitted: Yes
Wet Space: No
Addition: No
Conversion: No

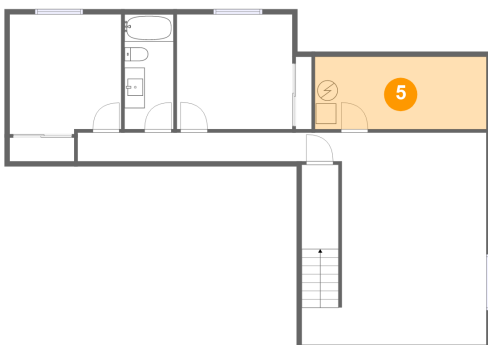
4 Floor 1 - Bath



Dimensions: 4'10" x 11'3"
Area: 54 sq. ft
Counted as Living Area:
Yes

Heated: Yes
Finished: Yes
Enclosed: Yes
Contiguous:
Yes
Permitted: Yes
Wet Space: Yes
Addition: No
Conversion: No

5 Floor 1 - Storage

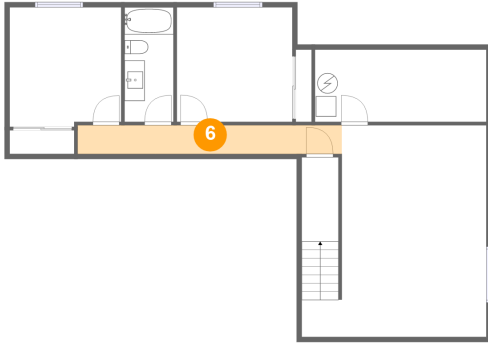


Dimensions: 16'10" x 7'1"
Area: 120 sq. ft
Counted as Living Area: No

Heated: No
Finished: No
Enclosed: No
Contiguous: Yes
Permitted: Yes
Wet Space: No
Addition: No
Conversion: No

403 Double Tree Dr, Greeley, CO, US

6 Floor 1 - Hall



Dimensions: 26'0" x 2'10"
Area: 73 sq. ft
Counted as Living Area:
Yes

Heated: Yes
Finished: Yes
Enclosed: Yes
Contiguous:
Yes
Permitted: Yes
Wet Space: No
Addition: No
Conversion: No

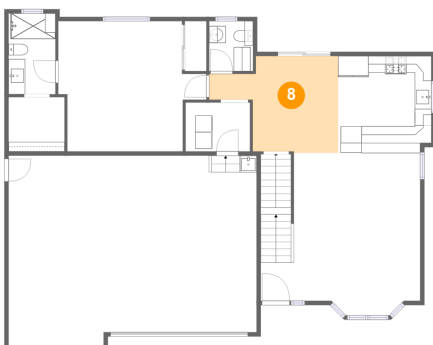
7 Floor 2 - Kitchen



Dimensions: 11'2" x 11'7"
Area: 127 sq. ft
Counted as Living Area:
Yes

Heated: Yes
Finished: Yes
Enclosed: Yes
Contiguous:
Yes
Permitted: Yes
Wet Space: No
Addition: No
Conversion: No

8 Floor 2 - Dining Area



Dimensions: 15'5" x 11'7"
Area: 133 sq. ft
Counted as Living Area:
Yes

Heated: Yes
Finished: Yes
Enclosed: Yes
Contiguous:
Yes
Permitted: Yes
Wet Space: No
Addition: No
Conversion: No

403 Double Tree Dr, Greeley, CO, US

9 Floor 2 - W.i.c.



Dimensions: 6'8" x 6'6"
Area: 43 sq. ft
Counted as Living Area:
Yes

Heated: Yes
Finished: Yes
Enclosed: Yes
Contiguous:
Yes
Permitted: Yes
Wet Space: No
Addition: No
Conversion: No

10 Floor 2 - Primary Bedroom



Dimensions: 17'8" x 15'7"
Area: 232 sq. ft
Counted as Living Area:
Yes

Heated: Yes
Finished: Yes
Enclosed: Yes
Contiguous:
Yes
Permitted: Yes
Wet Space: No
Addition: No
Conversion: No

11 Floor 2 - Laundry



Dimensions: 7'8" x 5'10"
Area: 45 sq. ft
Counted as Living Area:
Yes

Heated: Yes
Finished: Yes
Enclosed: Yes
Contiguous:
Yes
Permitted: Yes
Wet Space: No
Addition: No
Conversion: No

403 Double Tree Dr, Greeley, CO, US

12 Floor 2 - Bath



Dimensions: 5'7" x 9'8"
Area: 54 sq. ft
Counted as Living Area:
Yes

Heated: Yes
Finished: Yes
Enclosed: Yes
Contiguous:
Yes
Permitted: Yes
Wet Space: Yes
Addition: No
Conversion: No

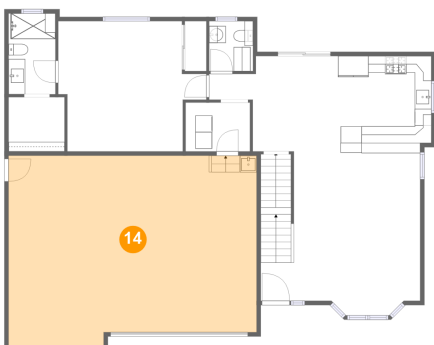
13 Floor 2 - Wc



Dimensions: 5'3" x 6'0"
Area: 31 sq. ft
Counted as Living Area:
Yes

Heated: Yes
Finished: Yes
Enclosed: Yes
Contiguous:
Yes
Permitted: Yes
Wet Space: Yes
Addition: No
Conversion: No

14 Floor 2 - Garage

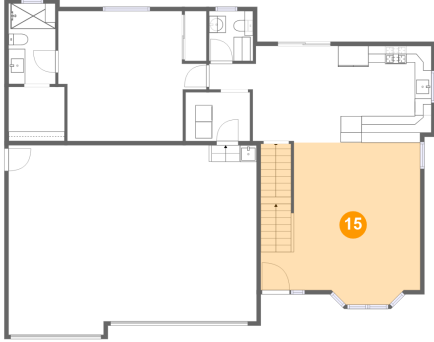


Dimensions: 29'8" x 22'8"
Area: 644 sq. ft
Counted as Living Area: No

Heated: No
Finished: No
Enclosed: Yes
Contiguous: Yes
Permitted: Yes
Wet Space: No
Addition: No
Conversion: No

403 Double Tree Dr, Greeley, CO, US

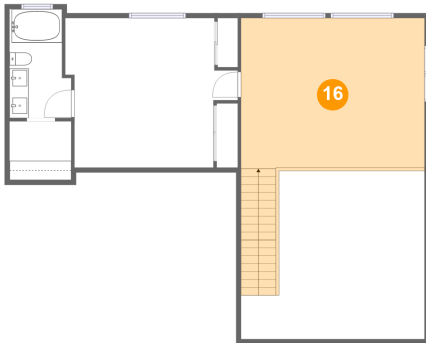
15 Floor 2 - Living Room



Dimensions: 19'1" x 19'4"
Area: 345 sq. ft
Counted as Living Area:
Yes

Heated: Yes
Finished: Yes
Enclosed: Yes
Contiguous:
Yes
Permitted: Yes
Wet Space: No
Addition: No
Conversion: No

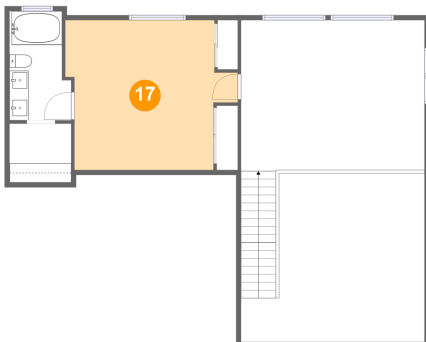
16 Floor 3 - Family Room



Dimensions: 19'1" x 15'8"
Area: 354 sq. ft
Counted as Living Area:
Yes

Heated: Yes
Finished: Yes
Enclosed: Yes
Contiguous:
Yes
Permitted: Yes
Wet Space: No
Addition: No
Conversion: No

17 Floor 3 - Bedroom

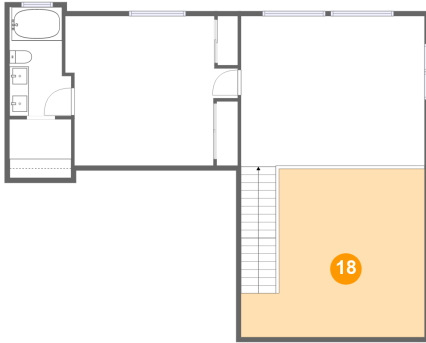


Dimensions: 17'11" x 15'7"
Area: 239 sq. ft
Counted as Living Area:
Yes

Heated: Yes
Finished: Yes
Enclosed: Yes
Contiguous:
Yes
Permitted: Yes
Wet Space: No
Addition: No
Conversion: No

403 Double Tree Dr, Greeley, CO, US

18 Floor 3 - Open To Below



Dimensions: 19'1" x 17'6"
Area: 283 sq. ft
Counted as Living Area: No

Heated: No
Finished: No
Enclosed: No
Contiguous: Yes
Permitted: No
Wet Space: No
Addition: No
Conversion: No

19 Floor 3 - Bath



Dimensions: 6'5" x 11'4"
Area: 66 sq. ft
Counted as Living Area: Yes

Heated: Yes
Finished: Yes
Enclosed: Yes
Contiguous: Yes
Permitted: Yes
Wet Space: Yes
Addition: No
Conversion: No

20 Floor 3 - W.i.c.



Dimensions: 6'5" x 6'1"
Area: 39 sq. ft
Counted as Living Area: Yes

Heated: Yes
Finished: Yes
Enclosed: Yes
Contiguous: Yes
Permitted: Yes
Wet Space: No
Addition: No
Conversion: No