

Home data report

4309 W Oak Rd N, Cedar Hills, UT, US



Total Area: 4181 sq. ft

Basement: 114 sq. ft, 1st Floor: 1321 sq. ft, 2nd Floor: 1210 sq. ft, 3rd Floor: 1330 sq. ft, 4th Floor: 206 sq. ft

Excluded: Storage 220 sq. ft, Utility 58 sq. ft, Garage 660 sq. ft, Fireplace 7 sq. ft, Low ceiling 136 sq. ft, Stairwell 21 sq. ft, Walls: 361 sq. ft

Property summary

 **5** Floors

 **4** Bedrooms

 **3** Bathrooms

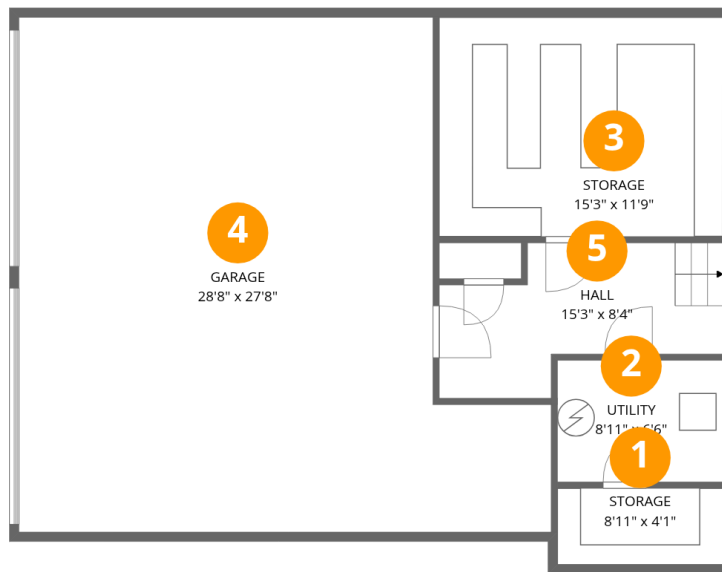
Home data report

4309 W Oak Rd N, Cedar Hills, UT, US

 **1**
Half baths

 **1**
Garages

4309 W Oak Rd N, Cedar Hills, UT, US



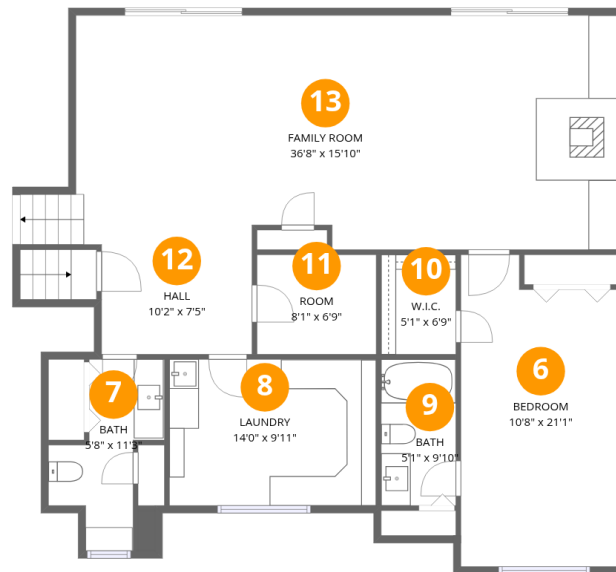
Room dimensions

Floor 1 Below grade

Total: 114 sqft

Excluded: 938 sqft

#		Dimensions	sqft	Counted as living area
1	Storage	8'11" x 4'1"	37 sq. ft	No
2	Utility	8'11" x 6'6"	58 sq. ft	No
3	Storage	15'3" x 11'9"	179 sq. ft	No
4	Garage	28'8" x 27'8"	792 sq. ft	No
5	Hall	15'3" x 8'4"	128 sq. ft	Yes



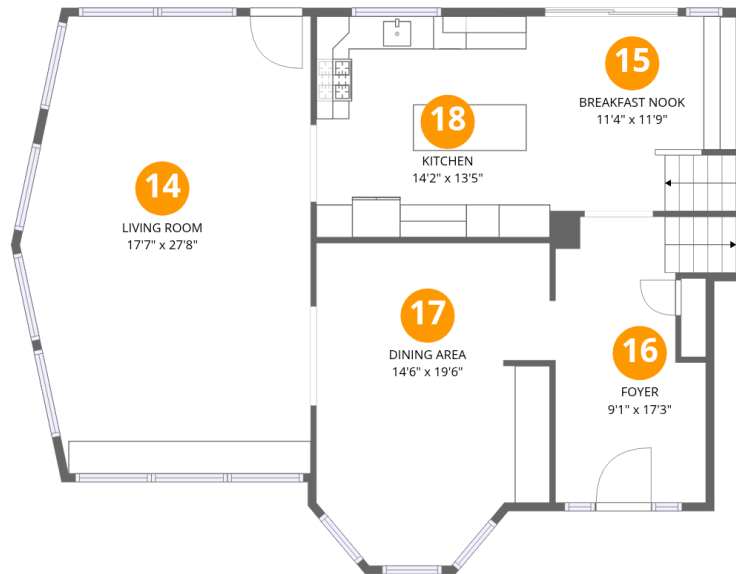
Room dimensions

Floor 2

Total: 1321 sqft

Excluded: 0 sqft

#		Dimensions	sqft	Counted as living area
6	Bedroom	10'8" x 21'1"	224 sq. ft	Yes
7	Bath	5'8" x 11'3"	64 sq. ft	Yes
8	Laundry	14'0" x 9'11"	138 sq. ft	Yes
9	Bath	5'1" x 9'10"	50 sq. ft	Yes
10	W.I.C.	5'1" x 6'9"	34 sq. ft	Yes
11	Room	8'1" x 6'9"	54 sq. ft	Yes
12	Hall	10'2" x 7'5"	75 sq. ft	Yes
13	Family Room	36'8" x 15'10"	579 sq. ft	Yes



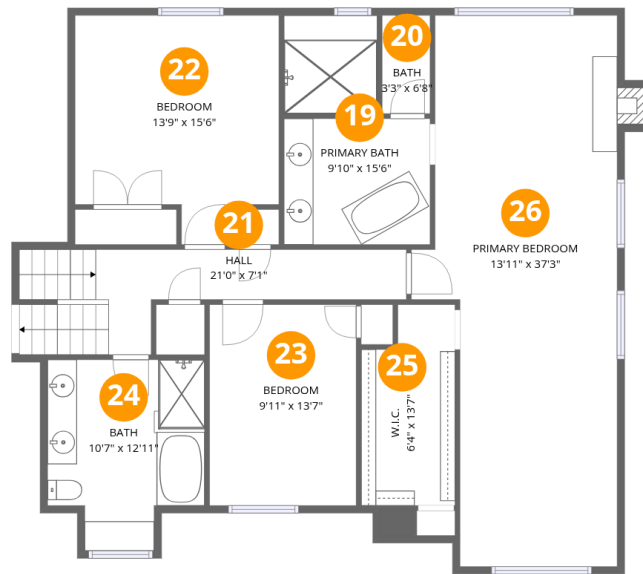
Room dimensions

Floor 3

Total:1210sqft

Excluded: 0sqft

#		Dimensions	sqft	Counted as living area
14	Living Room	17'7" x 27'8"	485 sq. ft	Yes
15	Breakfast Nook	11'4" x 11'9"	133 sq. ft	Yes
16	Foyer	9'1" x 17'3"	156 sq. ft	Yes
17	Dining Area	14'6" x 19'6"	282 sq. ft	Yes
18	Kitchen	14'2" x 13'5"	189 sq. ft	Yes



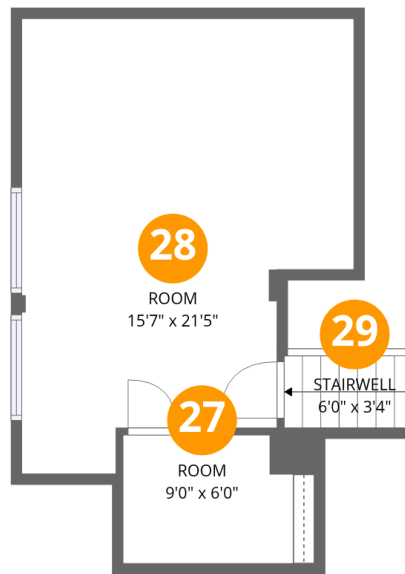
Room dimensions

Floor 4

Total: 1330 sqft

Excluded: 7 sqft

#		Dimensions	sqft	Counted as living area
19	Primary Bath	9'10" x 15'6"	152 sq. ft	Yes
20	Bath	3'3" x 6'8"	22 sq. ft	Yes
21	Hall	21'0" x 7'1"	148 sq. ft	Yes
22	Bedroom	13'9" x 15'6"	213 sq. ft	Yes
23	Bedroom	9'11" x 13'7"	134 sq. ft	Yes
24	Bath	10'7" x 12'11"	137 sq. ft	Yes
25	W.I.C.	6'4" x 13'7"	86 sq. ft	Yes
26	Primary Bedroom	13'11" x 37'3"	519 sq. ft	Yes



Room dimensions

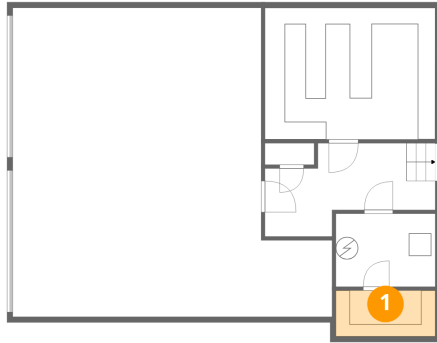
Floor 5

Total:206sqft

Excluded: 157sqft

#		Dimensions	sqft	Counted as living area
27	Room	9'0" x 6'0"	54 sq. ft	Yes
28	Room	15'7" x 21'5"	335 sq. ft	Yes
29	Stairwell	6'0" x 3'4"	20 sq. ft	No

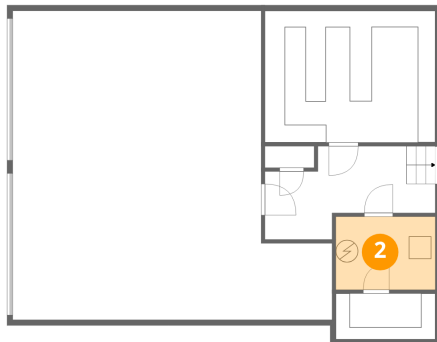
1 Floor 1 - Storage



Dimensions: 8'11" x 4'1"
Area: 37 sq. ft
Counted as living area: No

Heated: No
Finished: No
Enclosed: No
Contiguous: Yes
Permitted: Yes
Wet space: No
Addition: No
Conversion: No

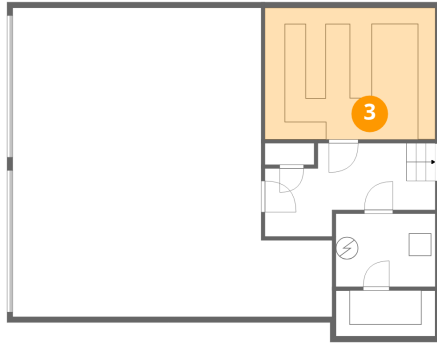
2 Floor 1 - Utility



Dimensions: 8'11" x 6'6"
Area: 58 sq. ft
Counted as living area: No

Heated: Yes
Finished: No
Enclosed: Yes
Contiguous: Yes
Permitted: Yes
Wet space: No
Addition: No
Conversion: No

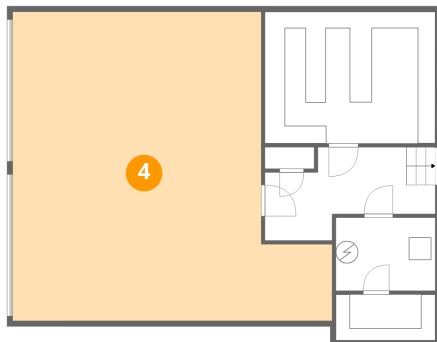
3 Floor 1 - Storage



Dimensions: 15'3" x 11'9"
Area: 179 sq. ft
Counted as living area: No

Heated: No
Finished: No
Enclosed: No
Contiguous: Yes
Permitted: Yes
Wet space: No
Addition: No
Conversion: No

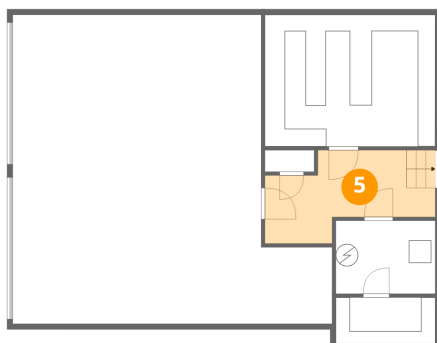
4 Floor 1 - Garage



Dimensions: 28'8" x 27'8"
Area: 792 sq. ft
Counted as living area: No

Heated: No
Finished: No
Enclosed: Yes
Contiguous: Yes
Permitted: Yes
Wet space: No
Addition: No
Conversion: No

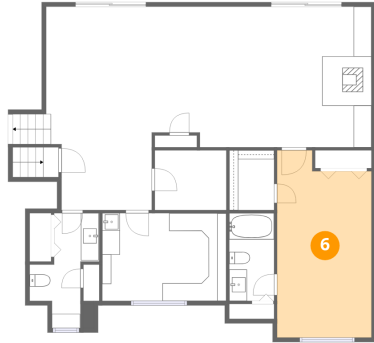
5 Floor 1 - Hall



Dimensions: 15'3" x 8'4"
Area: 128 sq. ft
Counted as living area: No

Heated: Yes
Finished: Yes
Enclosed: Yes
Contiguous: No
Permitted: Yes
Wet space: No
Addition: No
Conversion: No

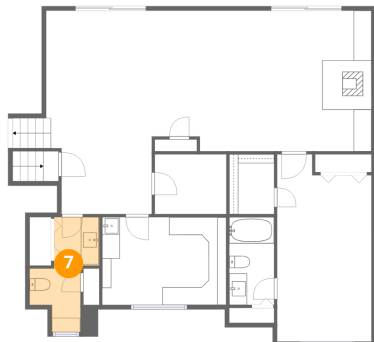
6 Floor 2 - Bedroom



Dimensions: 10'8" x 21'1"
Area: 224 sq. ft
Counted as living area: Yes

Heated: Yes
Finished: Yes
Enclosed: Yes
Contiguous: Yes
Permitted: Yes
Wet space: No
Addition: No
Conversion: No

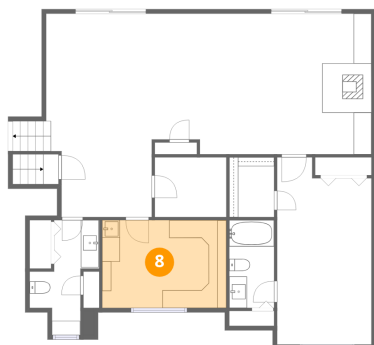
7 Floor 2 - Bath



Dimensions: 5'8" x 11'3"
Area: 64 sq. ft
Counted as living area: Yes

Heated: Yes
Finished: Yes
Enclosed: Yes
Contiguous: Yes
Permitted: Yes
Wet space: Yes
Addition: No
Conversion: No

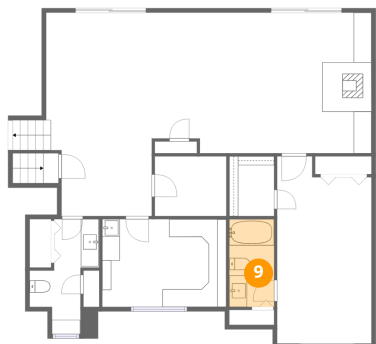
8 Floor 2 - Laundry



Dimensions: 14'0" x 9'11"
Area: 138 sq. ft
Counted as living area: Yes

Heated: Yes
Finished: Yes
Enclosed: Yes
Contiguous: Yes
Permitted: Yes
Wet space: No
Addition: No
Conversion: No

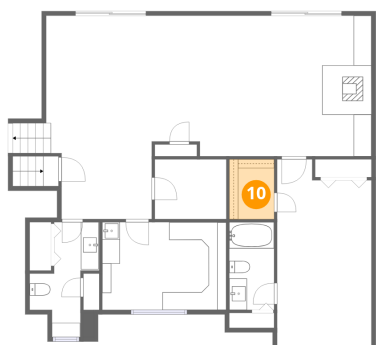
9 Floor 2 - Bath



Dimensions: 5'1" x 9'10"
Area: 50 sq. ft
Counted as living area: Yes

Heated: Yes
Finished: Yes
Enclosed: Yes
Contiguous: Yes
Permitted: Yes
Wet space: Yes
Addition: No
Conversion: No

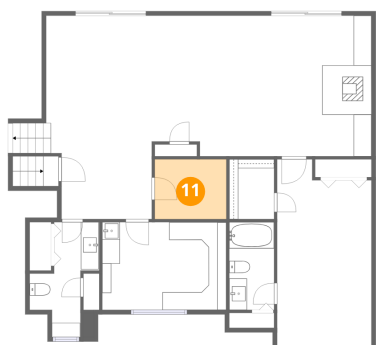
10 Floor 2 - W.I.C.



Dimensions: 5'1" x 6'9"
Area: 34 sq. ft
Counted as living area: Yes

Heated: Yes
Finished: Yes
Enclosed: Yes
Contiguous: Yes
Permitted: Yes
Wet space: No
Addition: No
Conversion: No

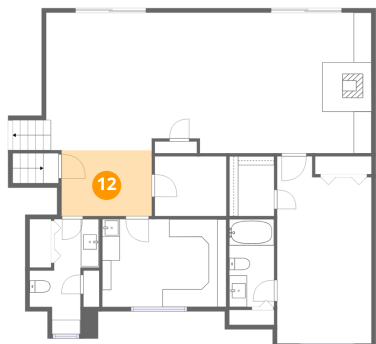
11 Floor 2 - Room



Dimensions: 8'1" x 6'9"
Area: 54 sq. ft
Counted as living area: Yes

Heated: Yes
Finished: Yes
Enclosed: Yes
Contiguous: Yes
Permitted: Yes
Wet space: No
Addition: No
Conversion: No

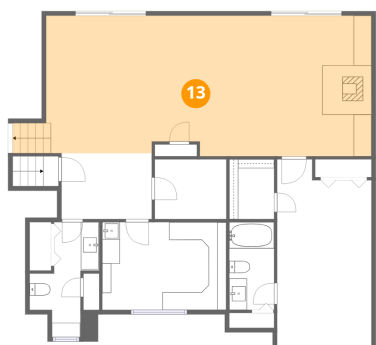
12 Floor 2 - Hall



Dimensions: 10'2" x 7'5"
Area: 75 sq. ft
Counted as living area: Yes

Heated: Yes
Finished: Yes
Enclosed: Yes
Contiguous: Yes
Permitted: Yes
Wet space: No
Addition: No
Conversion: No

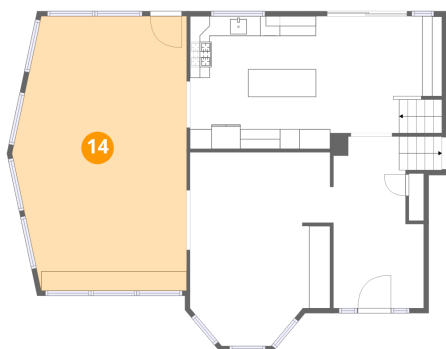
13 Floor 2 - Family Room



Dimensions: 36'8" x 15'10"
Area: 579 sq. ft
Counted as living area: Yes

Heated: Yes
Finished: Yes
Enclosed: Yes
Contiguous: Yes
Permitted: Yes
Wet space: No
Addition: No
Conversion: No

14 Floor 3 - Living Room



Dimensions: 17'7" x 27'8"
Area: 485 sq. ft
Counted as living area: Yes

Heated: Yes
Finished: Yes
Enclosed: Yes
Contiguous: Yes
Permitted: Yes
Wet space: No
Addition: No
Conversion: No

15 Floor 3 - Breakfast Nook



Dimensions: 11'4" x 11'9"
Area: 133 sq. ft
Counted as living area: Yes

Heated: Yes
Finished: Yes
Enclosed: Yes
Contiguous: Yes
Permitted: Yes
Wet space: No
Addition: No
Conversion: No

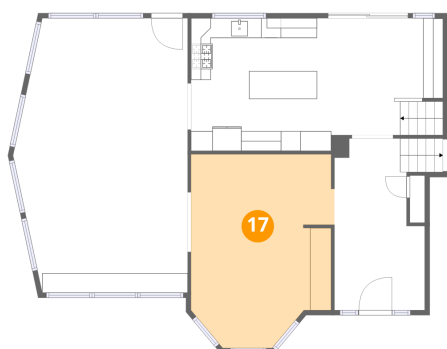
16 Floor 3 - Foyer



Dimensions: 9'1" x 17'3"
Area: 156 sq. ft
Counted as living area: Yes

Heated: Yes
Finished: Yes
Enclosed: Yes
Contiguous: Yes
Permitted: Yes
Wet space: No
Addition: No
Conversion: No

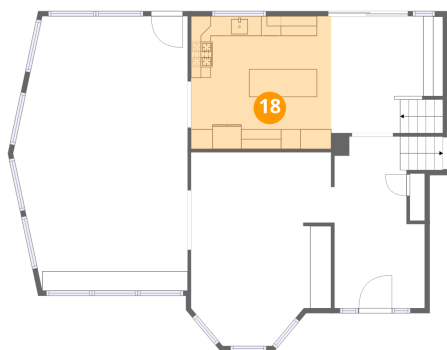
17 Floor 3 - Dining Area



Dimensions: 14'6" x 19'6"
Area: 282 sq. ft
Counted as living area: Yes

Heated: Yes
Finished: Yes
Enclosed: Yes
Contiguous: Yes
Permitted: Yes
Wet space: No
Addition: No
Conversion: No

18 Floor 3 - Kitchen



Dimensions: 14'2" x 13'5"
Area: 189 sq. ft
Counted as living area: Yes

Heated: Yes
Finished: Yes
Enclosed: Yes
Contiguous: Yes
Permitted: Yes
Wet space: No
Addition: No
Conversion: No

19 Floor 4 - Primary Bath



Dimensions: 9'10" x 15'6"
Area: 152 sq. ft
Counted as living area: Yes

Heated: Yes
Finished: Yes
Enclosed: Yes
Contiguous: Yes
Permitted: Yes
Wet space: Yes
Addition: No
Conversion: No

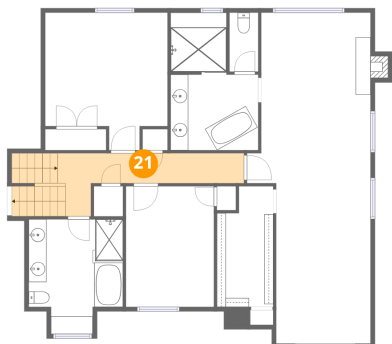
20 Floor 4 - Bath



Dimensions: 3'3" x 6'8"
Area: 22 sq. ft
Counted as living area: Yes

Heated: Yes
Finished: Yes
Enclosed: Yes
Contiguous: Yes
Permitted: Yes
Wet space: Yes
Addition: No
Conversion: No

21 Floor 4 - Hall



Dimensions: 21'0" x 7'1"
Area: 148 sq. ft
Counted as living area: Yes

Heated: Yes
Finished: Yes
Enclosed: Yes
Contiguous: Yes
Permitted: Yes
Wet space: No
Addition: No
Conversion: No

22 Floor 4 - Bedroom



Dimensions: 13'9" x 15'6"
Area: 213 sq. ft
Counted as living area: Yes

Heated: Yes
Finished: Yes
Enclosed: Yes
Contiguous: Yes
Permitted: Yes
Wet space: No
Addition: No
Conversion: No

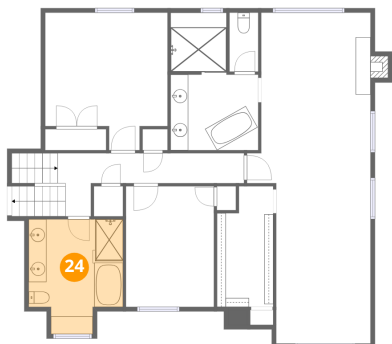
23 Floor 4 - Bedroom



Dimensions: 9'11" x 13'7"
Area: 134 sq. ft
Counted as living area: Yes

Heated: Yes
Finished: Yes
Enclosed: Yes
Contiguous: Yes
Permitted: Yes
Wet space: No
Addition: No
Conversion: No

24 Floor 4 - Bath



Dimensions: 10'7" x 12'11"
Area: 137 sq. ft
Counted as living area: Yes

Heated: Yes
Finished: Yes
Enclosed: Yes
Contiguous: Yes
Permitted: Yes
Wet space: Yes
Addition: No
Conversion: No

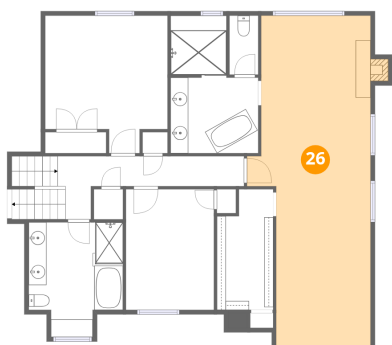
25 Floor 4 - W.I.C.



Dimensions: 6'4" x 13'7"
Area: 86 sq. ft
Counted as living area: Yes

Heated: Yes
Finished: Yes
Enclosed: Yes
Contiguous: Yes
Permitted: Yes
Wet space: No
Addition: No
Conversion: No

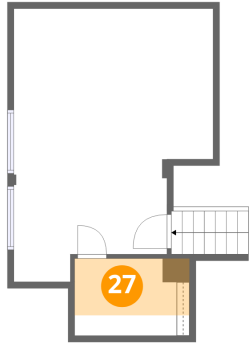
26 Floor 4 - Primary Bedroom



Dimensions: 13'11" x 37'3"
Area: 519 sq. ft
Counted as living area: Yes

Heated: Yes
Finished: Yes
Enclosed: Yes
Contiguous: Yes
Permitted: Yes
Wet space: No
Addition: No
Conversion: No

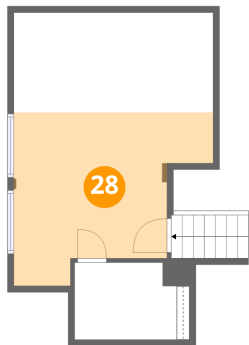
27 Floor 5 - Room



Dimensions: 9'0" x 6'0"
Area: 54 sq. ft
Counted as living area: Yes

Heated: Yes
Finished: Yes
Enclosed: Yes
Contiguous: Yes
Permitted: Yes
Wet space: No
Addition: No
Conversion: No

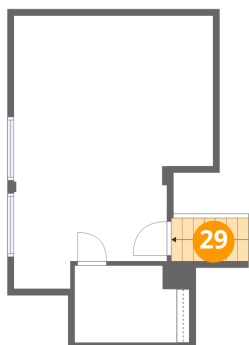
28 Floor 5 - Room



Dimensions: 15'7" x 21'5"
Area: 335 sq. ft
Counted as living area: Yes

Heated: Yes
Finished: Yes
Enclosed: Yes
Contiguous: Yes
Permitted: Yes
Wet space: No
Addition: No
Conversion: No

29 Floor 5 - Stairwell



Dimensions: 6'0" x 3'4"
Area: 20 sq. ft
Counted as living area: No

Heated: No
Finished: No
Enclosed: No
Contiguous: Yes
Permitted: No
Wet space: No
Addition: No
Conversion: No