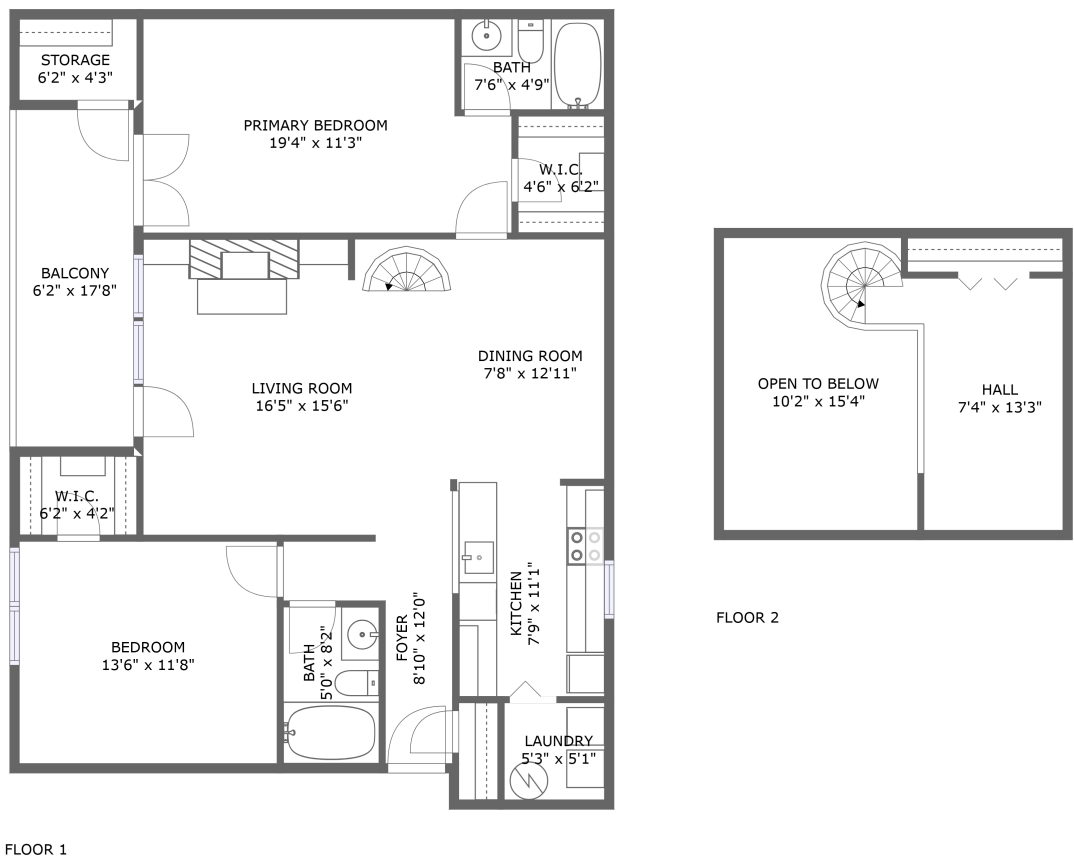



Home report


20635 Shadyside Way,103-7,Germantown,Maryland,United States, 103-7




Property summary




0
Garages



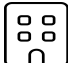
2
Bedrooms




2
Bathrooms




0
Half baths



2
Floors



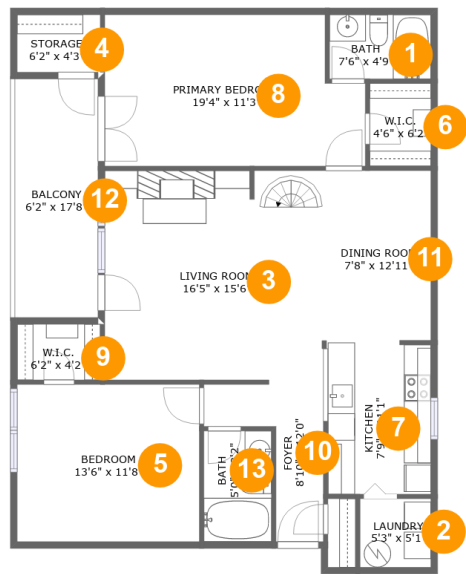
1,066
Gross living
area sqft



1,474
Total sqft

Home report

20635 Shadyside Way,103-7,Germantown,Maryland,United States, 103-7



Room dimensions

Floor 1 Total sqft: 1201 Living area: 1066

#		Dimensions	sqft	Counted as living area
1	Bath	7'6" x 4'9"	36 sq. ft	Yes
2	Laundry	5'3" x 5'1"	27 sq. ft	Yes
3	Living Room	16'5" x 15'6"	253 sq. ft	Yes
4	Storage	6'2" x 4'3"	26 sq. ft	No
5	Bedroom	13'6" x 11'8"	157 sq. ft	Yes
6	W.I.C.	4'6" x 6'2"	28 sq. ft	Yes
7	Kitchen	7'9" x 11'1"	86 sq. ft	Yes
8	Primary Bedroom	19'4" x 11'3"	201 sq. ft	Yes
9	W.I.C.	6'2" x 4'2"	25 sq. ft	Yes
10	Foyer	8'10" x 12'0"	59 sq. ft	Yes
11	Dining Room	7'8" x 12'11"	99 sq. ft	Yes

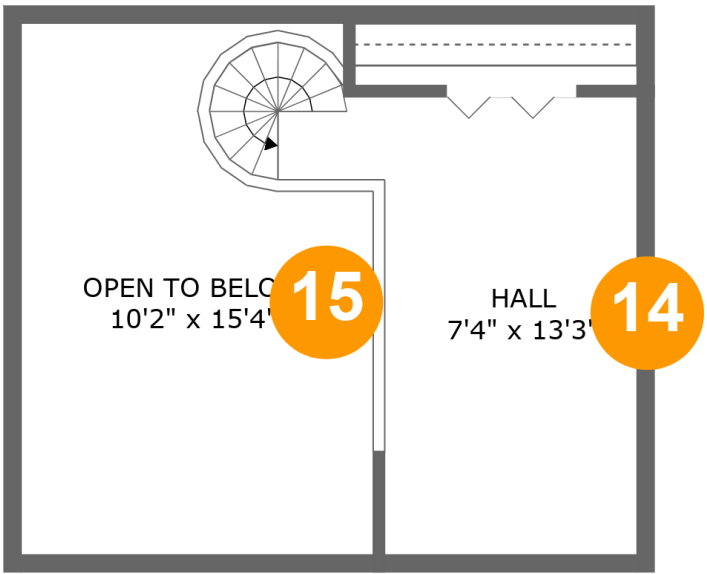
Home report

20635 Shadyside Way,103-7,Germantown,Maryland,United States, 103-7

#		Dimensions	sqft	Counted as living area
12	Balcony	6'2" x 17'8"	109 sq. ft	No
13	Bath	5'0" x 8'2"	41 sq. ft	Yes

Home report

20635 Shadyside Way,103-7,Germantown,Maryland,United States, 103-7

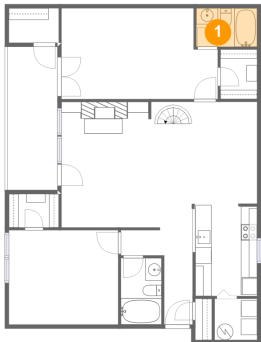


Room dimensions

Floor 2 Total sqft: 273 Living area: 0

#		Dimensions	sqft	Counted as living area
14	Hall	7'4" x 13'3"	103 sq. ft	No
15	Open To Below	10'2" x 15'4"	151 sq. ft	No

1 Floor 1 - Bath



Dimensions: 7'6" x 4'9"
Area: 36 sq. ft
Counted as living area: Yes

Heated: Yes
Finished: Yes
Enclosed: Yes
Contiguous: Yes
Permitted: Yes
Wet space: Yes
Addition: No
Conversion: No

2 Floor 1 - Laundry

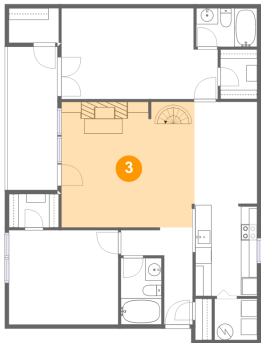


Dimensions: 5'3" x 5'1"
Area: 27 sq. ft
Counted as living area: Yes

Heated: Yes
Finished: Yes
Enclosed: Yes
Contiguous: Yes
Permitted: Yes
Wet space: No
Addition: No
Conversion: No

20635 Shadyside Way,103-7,Germantown,Maryland,United States, 103-7

3 Floor 1 - Living Room



Dimensions: 16'5" x 15'6"
Area: 253 sq. ft
Counted as living area: Yes

Heated: Yes
Finished: Yes
Enclosed: Yes
Contiguous: Yes
Permitted: Yes
Wet space: No
Addition: No
Conversion: No

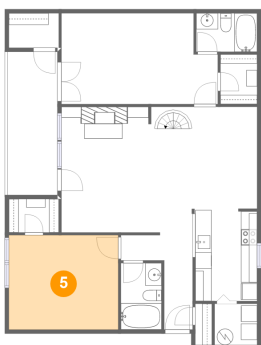
4 Floor 1 - Storage



Dimensions: 6'2" x 4'3"
Area: 26 sq. ft
Counted as living area: No

Heated: No
Finished: No
Enclosed: No
Contiguous: Yes
Permitted: Yes
Wet space: No
Addition: No
Conversion: No

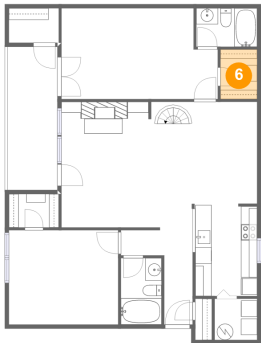
5 Floor 1 - Bedroom



Dimensions: 13'6" x 11'8"
Area: 157 sq. ft
Counted as living area: Yes

Heated: Yes
Finished: Yes
Enclosed: Yes
Contiguous: Yes
Permitted: Yes
Wet space: No
Addition: No
Conversion: No

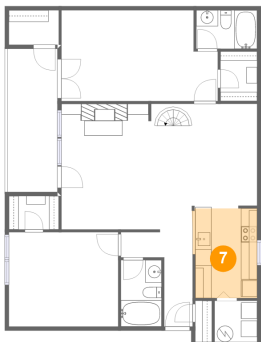
6 Floor 1 - W.I.C.



Dimensions: 4'6" x 6'2"
Area: 28 sq. ft
Counted as living area: Yes

Heated: Yes
Finished: Yes
Enclosed: Yes
Contiguous: Yes
Permitted: Yes
Wet space: No
Addition: No
Conversion: No

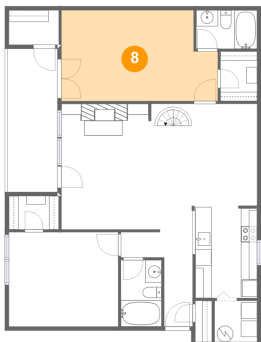
7 Floor 1 - Kitchen



Dimensions: 7'9" x 11'1"
Area: 86 sq. ft
Counted as living area: Yes

Heated: Yes
Finished: Yes
Enclosed: Yes
Contiguous: Yes
Permitted: Yes
Wet space: No
Addition: No
Conversion: No

8 Floor 1 - Primary Bedroom

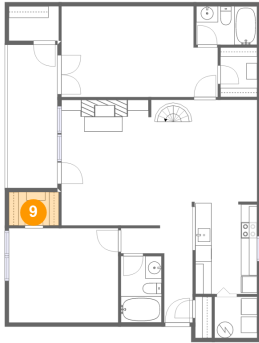


Dimensions: 19'4" x 11'3"
Area: 201 sq. ft
Counted as living area: Yes

Heated: Yes
Finished: Yes
Enclosed: Yes
Contiguous: Yes
Permitted: Yes
Wet space: No
Addition: No
Conversion: No

20635 Shadyside Way,103-7,Germantown,Maryland,United States, 103-7

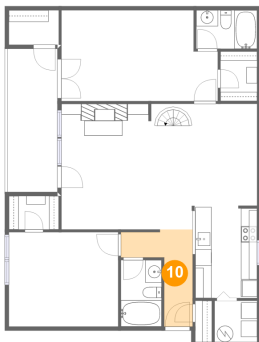
9 Floor 1 - W.I.C.



Dimensions: 6'2" x 4'2"
Area: 25 sq. ft
Counted as living area: Yes

Heated: Yes
Finished: Yes
Enclosed: Yes
Contiguous: Yes
Permitted: Yes
Wet space: No
Addition: No
Conversion: No

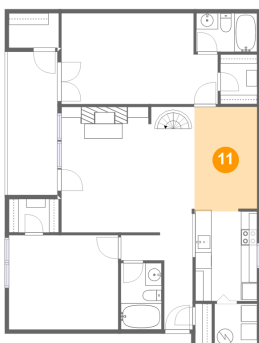
10 Floor 1 - Foyer



Dimensions: 8'10" x 12'0"
Area: 59 sq. ft
Counted as living area: Yes

Heated: Yes
Finished: Yes
Enclosed: Yes
Contiguous: Yes
Permitted: Yes
Wet space: No
Addition: No
Conversion: No

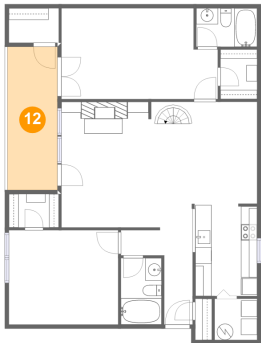
11 Floor 1 - Dining Room



Dimensions: 7'8" x 12'11"
Area: 99 sq. ft
Counted as living area: Yes

Heated: Yes
Finished: Yes
Enclosed: Yes
Contiguous: Yes
Permitted: Yes
Wet space: No
Addition: No
Conversion: No

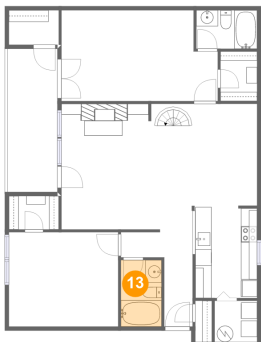
12 Floor 1 - Balcony



Dimensions: 6'2" x 17'8"
Area: 109 sq. ft
Counted as living area: No

Heated: No
Finished: Yes
Enclosed: No
Contiguous: Yes
Permitted: Yes
Wet space: No
Addition: No
Conversion: No

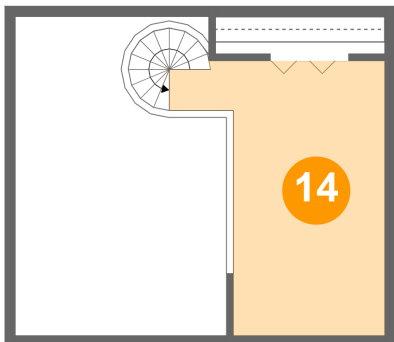
13 Floor 1 - Bath



Dimensions: 5'0" x 8'2"
Area: 41 sq. ft
Counted as living area: Yes

Heated: Yes
Finished: Yes
Enclosed: Yes
Contiguous: Yes
Permitted: Yes
Wet space: Yes
Addition: No
Conversion: No

14 Floor 2 - Hall

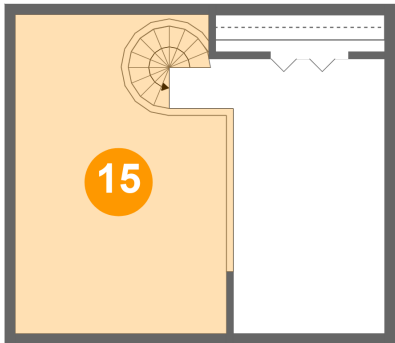


Dimensions: 7'4" x 13'3"
Area: 103 sq. ft
Counted as living area: No

Heated: Yes
Finished: Yes
Enclosed: Yes
Contiguous: No
Permitted: Yes
Wet space: No
Addition: No
Conversion: No

20635 Shadyside Way,103-7,Germantown,Maryland,United States, 103-7

15 Floor 2 - Open To Below



Dimensions: 10'2" x 15'4"
Area: 151 sq. ft
Counted as living area: No

Heated: No
Finished: No
Enclosed: No
Contiguous: Yes
Permitted: No
Wet space: No
Addition: No
Conversion: No