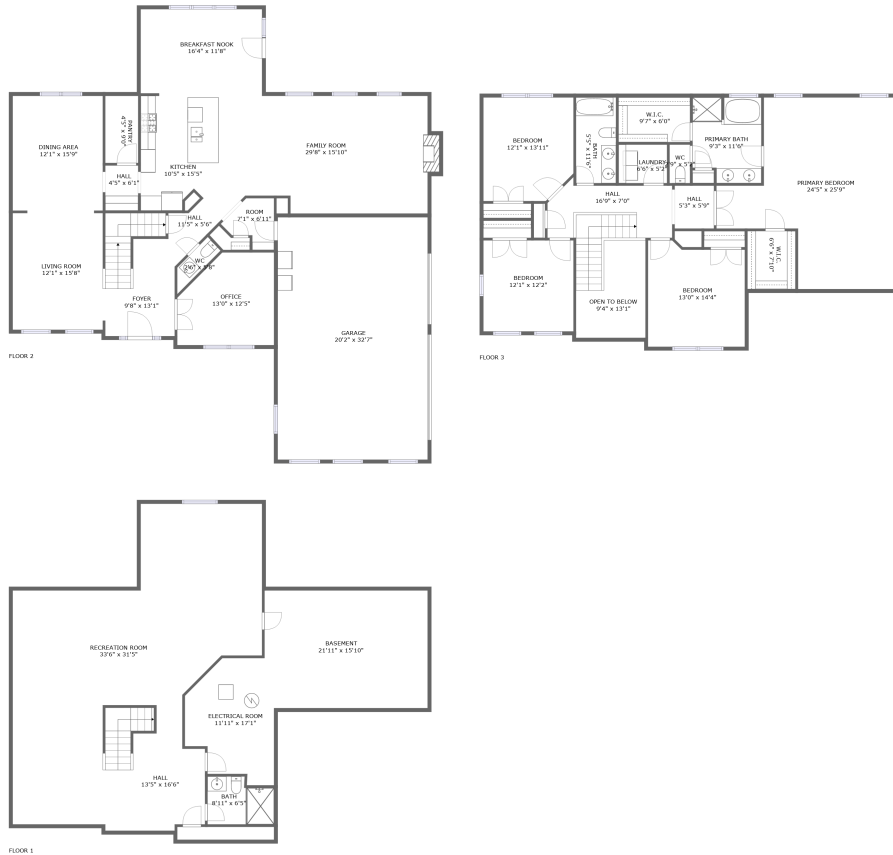


# 307 Longmore Drive, Adams Township, Mars, Butler County, Pennsylvania, United States,

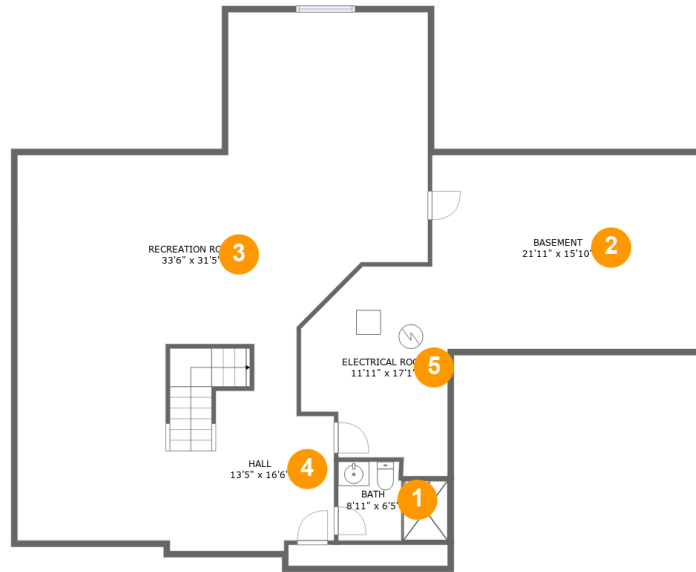


## Property Summary

**1** garages    **4** bedrooms    **3** bathrooms    **1** half baths

**3** floors    **4,632** Gross Living Area sqft    **5,974** total sqft

**307 Longmore Drive, Adams Township, Mars, Butler County, Pennsylvania, United States,**



**Room Dimensions**

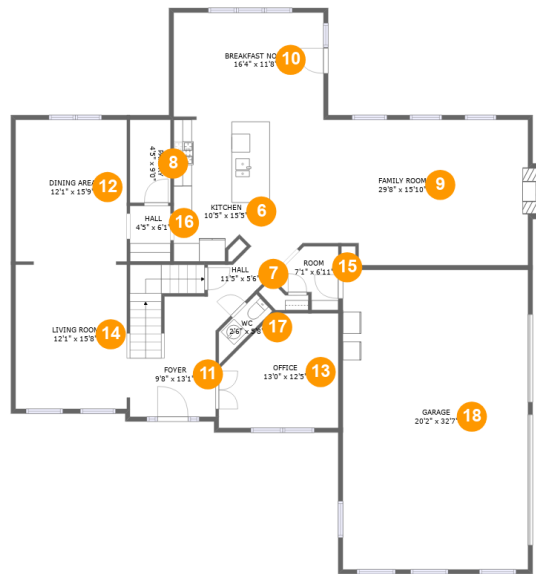
**Floor 1**

**Total sqft: 1757**

**Living area: 1216**

#	Room name	Dimensions	Area (sqft)	Counted as Living Area
1	Bath	8'11" x 6'5"	51 sq. ft	Yes
2	Basement	21'11" x 15'10"	342 sq. ft	No
3	Recreation Room	33'6" x 31'5"	847 sq. ft	Yes
4	Hall	13'5" x 16'6"	201 sq. ft	Yes
5	Electrical Room	11'11" x 17'1"	164 sq. ft	No

# 307 Longmore Drive, Adams Township, Mars, Butler County, Pennsylvania, United States,



## Room Dimensions

Floor 2

Total sqft: 2456

Living area: 1757

#	Room name	Dimensions	Area (sqft)	Counted as Living Area
6	Kitchen	10'5" x 15'5"	151 sq. ft	Yes
7	Hall	11'5" x 5'6"	41 sq. ft	Yes
8	Pantry	4'5" x 9'0"	40 sq. ft	Yes
9	Family Room	29'8" x 15'10"	429 sq. ft	Yes
10	Breakfast Nook	16'4" x 11'8"	189 sq. ft	Yes
11	Foyer	9'8" x 13'1"	150 sq. ft	Yes
12	Dining Area	12'1" x 15'9"	190 sq. ft	Yes
13	Office	13'0" x 12'5"	143 sq. ft	Yes
14	Living Room	12'1" x 15'8"	190 sq. ft	Yes
15	Room	7'1" x 6'11"	38 sq. ft	Yes
16	Hall	4'5" x 6'1"	27 sq. ft	Yes

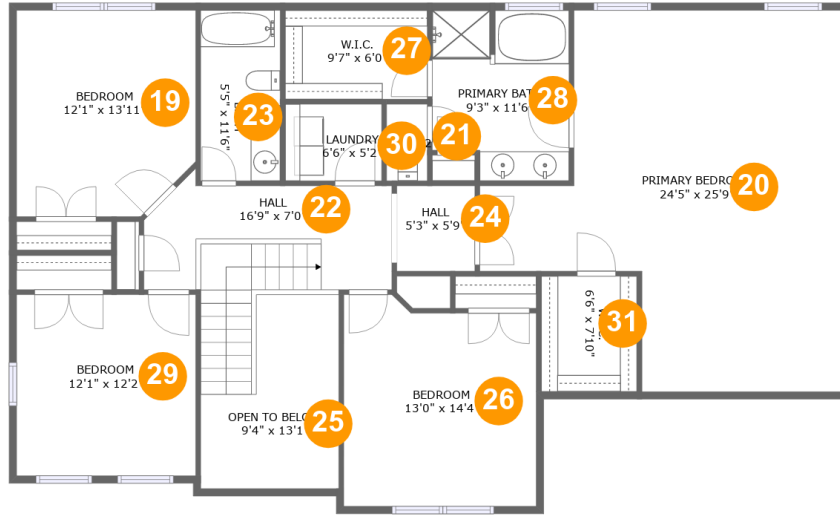
Scan captured on Fri, 21 Jun 2024 22:27:04 GMT

Information is calculated by CubiCasa technology; deemed highly reliable but not guaranteed.

**307 Longmore Drive, Adams Township, Mars,  
Butler County, Pennsylvania, United States,**

#	Room name	Dimensions	Area (sqft)	Counted as Living Area
17	Wc	2'6" x 5'8"	18 sq. ft	Yes
18	Garage	20'2" x 32'7"	656 sq. ft	No

**307 Longmore Drive, Adams Township, Mars, Butler County, Pennsylvania, United States,**



**Room Dimensions**

**Floor 3**

**Total sqft: 1761**

**Living area: 1659**

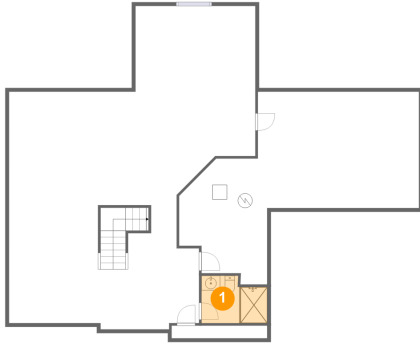
#	Room name	Dimensions	Area (sqft)	Counted as Living Area
19	Bedroom	12'1" x 13'11"	162 sq. ft	Yes
20	Primary Bedroom	24'5" x 25'9"	465 sq. ft	Yes
21	Wc	2'9" x 5'2"	14 sq. ft	Yes
22	Hall	16'9" x 7'0"	144 sq. ft	Yes
23	Bath	5'5" x 11'6"	62 sq. ft	Yes
24	Hall	5'3" x 5'9"	30 sq. ft	Yes
25	Open To Below	9'4" x 13'1"	97 sq. ft	No
26	Bedroom	13'0" x 14'4"	175 sq. ft	Yes
27	W.i.c.	9'7" x 6'0"	58 sq. ft	Yes
28	Primary Bath	9'3" x 11'6"	99 sq. ft	Yes
29	Bedroom	12'1" x 12'2"	148 sq. ft	Yes

**307 Longmore Drive, Adams Township, Mars,  
Butler County, Pennsylvania, United States,**

#	Room name	Dimensions	Area (sqft)	Counted as Living Area
30	Laundry	6'6" x 5'2"	34 sq. ft	Yes
31	W.i.c.	6'6" x 7'10"	51 sq. ft	Yes

# 307 Longmore Drive, Adams Township, Mars, Butler County, Pennsylvania, United States,

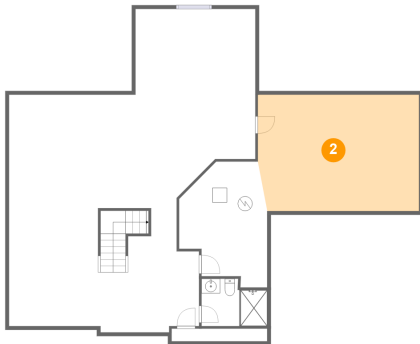
## 1 Floor 1 - Bath



Dimensions: 8'11" x 6'5"  
Area: 51 sq. ft  
Counted as Living Area:  
Yes

Heated: Yes  
Finished: Yes  
Enclosed: Yes  
Contiguous:  
Yes  
Permitted: Yes  
Wet Space: Yes  
Addition: No  
Conversion: No

## 2 Floor 1 - Basement

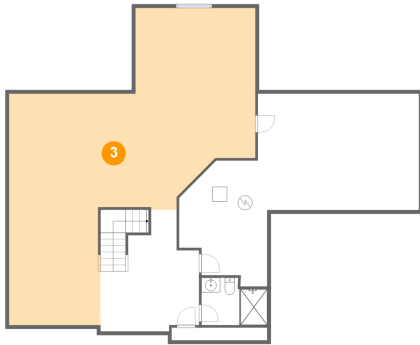


Dimensions: 21'11" x 15'10"  
Area: 342 sq. ft  
Counted as Living Area: No

Heated: No  
Finished: No  
Enclosed: Yes  
Contiguous: Yes  
Permitted: Yes  
Wet Space: No  
Addition: No  
Conversion: No

# 307 Longmore Drive, Adams Township, Mars, Butler County, Pennsylvania, United States,

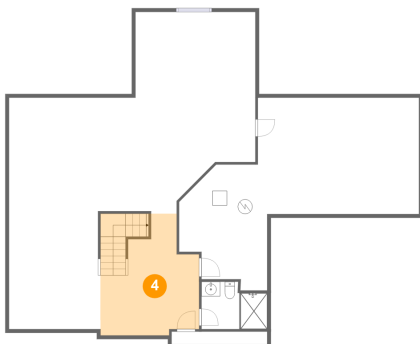
## 3 Floor 1 - Recreation Room



Dimensions: 33'6" x 31'5"  
Area: 847 sq. ft  
Counted as Living Area:  
Yes

Heated: Yes  
Finished: Yes  
Enclosed: Yes  
Contiguous:  
Yes  
Permitted: Yes  
Wet Space: No  
Addition: No  
Conversion: No

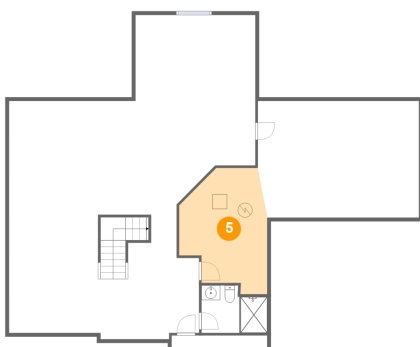
## 4 Floor 1 - Hall



Dimensions: 13'5" x 16'6"  
Area: 201 sq. ft  
Counted as Living Area:  
Yes

Heated: Yes  
Finished: Yes  
Enclosed: Yes  
Contiguous:  
Yes  
Permitted: Yes  
Wet Space: No  
Addition: No  
Conversion: No

## 5 Floor 1 - Electrical Room



Dimensions: 11'11" x 17'1"  
Area: 164 sq. ft  
Counted as Living Area: No

Heated: No  
Finished: No  
Enclosed: Yes  
Contiguous: Yes  
Permitted: Yes  
Wet Space: No  
Addition: No  
Conversion: No



# 307 Longmore Drive, Adams Township, Mars, Butler County, Pennsylvania, United States,

## 6 Floor 2 - Kitchen



Dimensions: 10'5" x 15'5"  
Area: 151 sq. ft  
Counted as Living Area:  
Yes

Heated: Yes  
Finished: Yes  
Enclosed: Yes  
Contiguous:  
Yes  
Permitted: Yes  
Wet Space: No  
Addition: No  
Conversion: No

## 7 Floor 2 - Hall



Dimensions: 11'5" x 5'6"  
Area: 41 sq. ft  
Counted as Living Area:  
Yes

Heated: Yes  
Finished: Yes  
Enclosed: Yes  
Contiguous:  
Yes  
Permitted: Yes  
Wet Space: No  
Addition: No  
Conversion: No

## 8 Floor 2 - Pantry

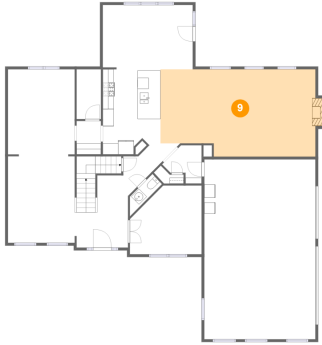


Dimensions: 4'5" x 9'0"  
Area: 40 sq. ft  
Counted as Living Area:  
Yes

Heated: Yes  
Finished: Yes  
Enclosed: Yes  
Contiguous:  
Yes  
Permitted: Yes  
Wet Space: No  
Addition: No  
Conversion: No

# 307 Longmore Drive, Adams Township, Mars, Butler County, Pennsylvania, United States,

## 9 Floor 2 - Family Room



Dimensions: 29'8" x 15'10"  
Area: 429 sq. ft  
Counted as Living Area:  
Yes

Heated: Yes  
Finished: Yes  
Enclosed: Yes  
Contiguous:  
Yes  
Permitted: Yes  
Wet Space: No  
Addition: No  
Conversion: No

## 10 Floor 2 - Breakfast Nook



Dimensions: 16'4" x 11'8"  
Area: 189 sq. ft  
Counted as Living Area:  
Yes

Heated: Yes  
Finished: Yes  
Enclosed: Yes  
Contiguous:  
Yes  
Permitted: Yes  
Wet Space: No  
Addition: No  
Conversion: No

## 11 Floor 2 - Foyer

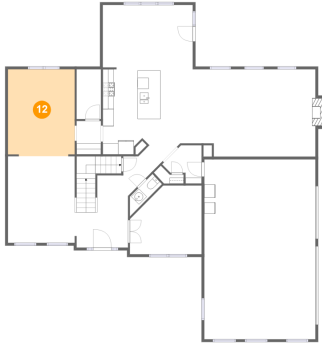


Dimensions: 9'8" x 13'1"  
Area: 150 sq. ft  
Counted as Living Area:  
Yes

Heated: Yes  
Finished: Yes  
Enclosed: Yes  
Contiguous:  
Yes  
Permitted: Yes  
Wet Space: No  
Addition: No  
Conversion: No

# 307 Longmore Drive, Adams Township, Mars, Butler County, Pennsylvania, United States,

## 12 Floor 2 - Dining Area



Dimensions: 12'1" x 15'9"  
Area: 190 sq. ft  
Counted as Living Area:  
Yes

Heated: Yes  
Finished: Yes  
Enclosed: Yes  
Contiguous:  
Yes  
Permitted: Yes  
Wet Space: No  
Addition: No  
Conversion: No

## 13 Floor 2 - Office



Dimensions: 13'0" x 12'5"  
Area: 143 sq. ft  
Counted as Living Area:  
Yes

Heated: Yes  
Finished: Yes  
Enclosed: Yes  
Contiguous:  
Yes  
Permitted: Yes  
Wet Space: No  
Addition: No  
Conversion: No

## 14 Floor 2 - Living Room



Dimensions: 12'1" x 15'8"  
Area: 190 sq. ft  
Counted as Living Area:  
Yes

Heated: Yes  
Finished: Yes  
Enclosed: Yes  
Contiguous:  
Yes  
Permitted: Yes  
Wet Space: No  
Addition: No  
Conversion: No

# 307 Longmore Drive, Adams Township, Mars, Butler County, Pennsylvania, United States,

## 15 Floor 2 - Room



Dimensions: 7'1" x 6'11"  
Area: 38 sq. ft  
Counted as Living Area:  
Yes

Heated: Yes  
Finished: Yes  
Enclosed: Yes  
Contiguous:  
Yes  
Permitted: Yes  
Wet Space: No  
Addition: No  
Conversion: No

## 16 Floor 2 - Hall



Dimensions: 4'5" x 6'1"  
Area: 27 sq. ft  
Counted as Living Area:  
Yes

Heated: Yes  
Finished: Yes  
Enclosed: Yes  
Contiguous:  
Yes  
Permitted: Yes  
Wet Space: No  
Addition: No  
Conversion: No

## 17 Floor 2 - Wc

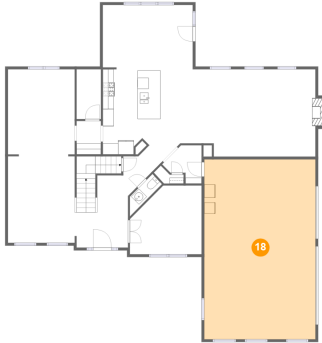


Dimensions: 2'6" x 5'8"  
Area: 18 sq. ft  
Counted as Living Area:  
Yes

Heated: Yes  
Finished: Yes  
Enclosed: Yes  
Contiguous:  
Yes  
Permitted: Yes  
Wet Space: Yes  
Addition: No  
Conversion: No

# 307 Longmore Drive, Adams Township, Mars, Butler County, Pennsylvania, United States,

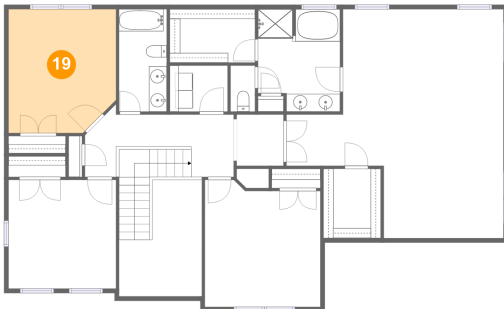
## 18 Floor 2 - Garage



Dimensions: 20'2" x 32'7"  
Area: 656 sq. ft  
Counted as Living Area: No

Heated: No  
Finished: No  
Enclosed: Yes  
Contiguous: Yes  
Permitted: Yes  
Wet Space: No  
Addition: No  
Conversion: No

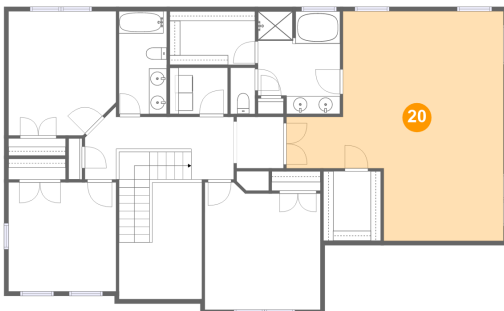
## 19 Floor 3 - Bedroom



Dimensions: 12'1" x 13'11"  
Area: 162 sq. ft  
Counted as Living Area:  
Yes

Heated: Yes  
Finished: Yes  
Enclosed: Yes  
Contiguous:  
Yes  
Permitted: Yes  
Wet Space: No  
Addition: No  
Conversion: No

## 20 Floor 3 - Primary Bedroom



Dimensions: 24'5" x 25'9"  
Area: 465 sq. ft  
Counted as Living Area:  
Yes

Heated: Yes  
Finished: Yes  
Enclosed: Yes  
Contiguous:  
Yes  
Permitted: Yes  
Wet Space: No  
Addition: No  
Conversion: No

# 307 Longmore Drive, Adams Township, Mars, Butler County, Pennsylvania, United States,

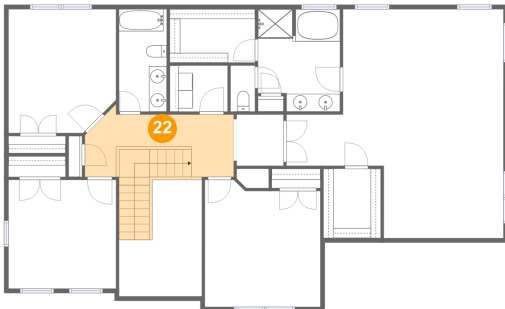
## 21 Floor 3 - Wc



Dimensions: 2'9" x 5'2"  
Area: 14 sq. ft  
Counted as Living Area:  
Yes

Heated: Yes  
Finished: Yes  
Enclosed: Yes  
Contiguous:  
Yes  
Permitted: Yes  
Wet Space: Yes  
Addition: No  
Conversion: No

## 22 Floor 3 - Hall



Dimensions: 16'9" x 7'0"  
Area: 144 sq. ft  
Counted as Living Area:  
Yes

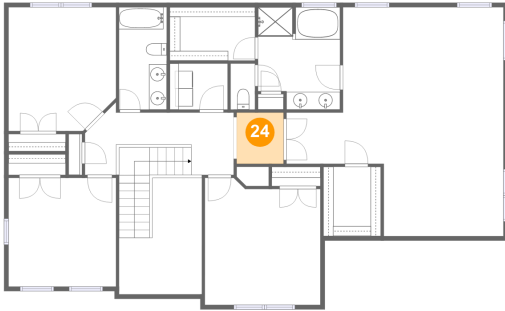
Heated: Yes  
Finished: Yes  
Enclosed: Yes  
Contiguous:  
Yes  
Permitted: Yes  
Wet Space: No  
Addition: No  
Conversion: No

## 23 Floor 3 - Bath



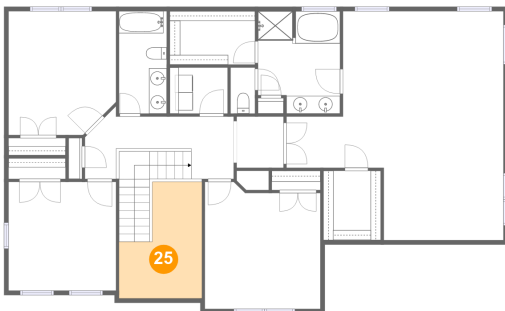
Dimensions: 5'5" x 11'6"  
Area: 62 sq. ft  
Counted as Living Area:  
Yes

Heated: Yes  
Finished: Yes  
Enclosed: Yes  
Contiguous:  
Yes  
Permitted: Yes  
Wet Space: Yes  
Addition: No  
Conversion: No

**307 Longmore Drive, Adams Township, Mars,  
Butler County, Pennsylvania, United States,****24 Floor 3 - Hall**

Dimensions: 5'3" x 5'9"  
Area: 30 sq. ft  
Counted as Living Area:  
Yes

Heated: Yes  
Finished: Yes  
Enclosed: Yes  
Contiguous:  
Yes  
Permitted: Yes  
Wet Space: No  
Addition: No  
Conversion: No

**25 Floor 3 - Open To Below**

Dimensions: 9'4" x 13'1"  
Area: 97 sq. ft  
Counted as Living Area: No

Heated: No  
Finished: No  
Enclosed: No  
Contiguous: Yes  
Permitted: No  
Wet Space: No  
Addition: No  
Conversion: No

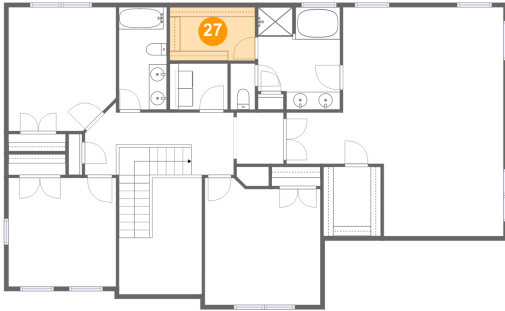
**26 Floor 3 - Bedroom**

Dimensions: 13'0" x 14'4"  
Area: 175 sq. ft  
Counted as Living Area:  
Yes

Heated: Yes  
Finished: Yes  
Enclosed: Yes  
Contiguous:  
Yes  
Permitted: Yes  
Wet Space: No  
Addition: No  
Conversion: No

# 307 Longmore Drive, Adams Township, Mars, Butler County, Pennsylvania, United States,

## 27 Floor 3 - W.i.c.



Dimensions: 9'7" x 6'0"  
Area: 58 sq. ft  
Counted as Living Area:  
Yes

Heated: Yes  
Finished: Yes  
Enclosed: Yes  
Contiguous:  
Yes  
Permitted: Yes  
Wet Space: No  
Addition: No  
Conversion: No

## 28 Floor 3 - Primary Bath



Dimensions: 9'3" x 11'6"  
Area: 99 sq. ft  
Counted as Living Area:  
Yes

Heated: Yes  
Finished: Yes  
Enclosed: Yes  
Contiguous:  
Yes  
Permitted: Yes  
Wet Space: Yes  
Addition: No  
Conversion: No

## 29 Floor 3 - Bedroom



Dimensions: 12'1" x 12'2"  
Area: 148 sq. ft  
Counted as Living Area:  
Yes

Heated: Yes  
Finished: Yes  
Enclosed: Yes  
Contiguous:  
Yes  
Permitted: Yes  
Wet Space: No  
Addition: No  
Conversion: No



# 307 Longmore Drive, Adams Township, Mars, Butler County, Pennsylvania, United States,

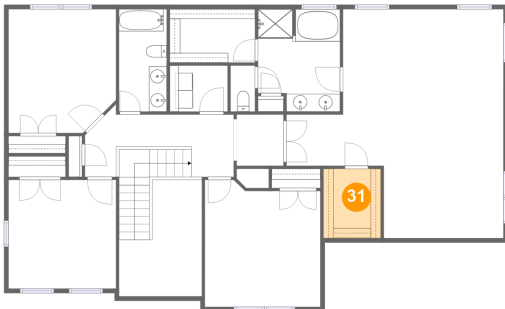
## 30 Floor 3 - Laundry



Dimensions: 6'6" x 5'2"  
Area: 34 sq. ft  
Counted as Living Area:  
Yes

Heated: Yes  
Finished: Yes  
Enclosed: Yes  
Contiguous:  
Yes  
Permitted: Yes  
Wet Space: No  
Addition: No  
Conversion: No

## 31 Floor 3 - W.i.c.



Dimensions: 6'6" x 7'10"  
Area: 51 sq. ft  
Counted as Living Area:  
Yes

Heated: Yes  
Finished: Yes  
Enclosed: Yes  
Contiguous:  
Yes  
Permitted: Yes  
Wet Space: No  
Addition: No  
Conversion: No