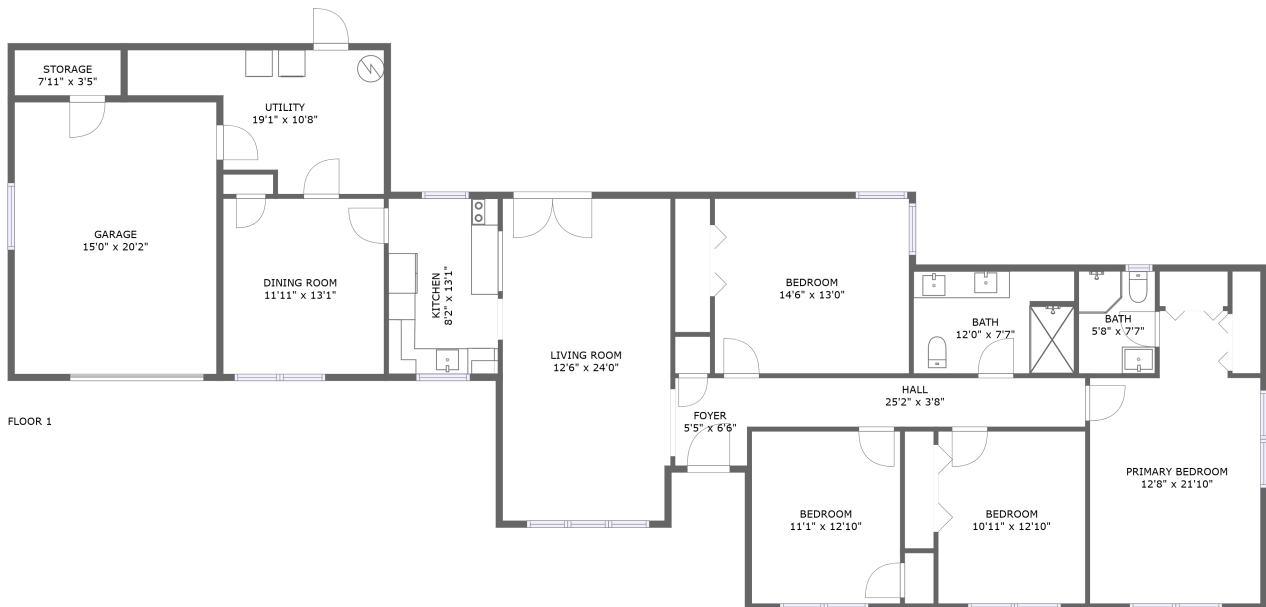






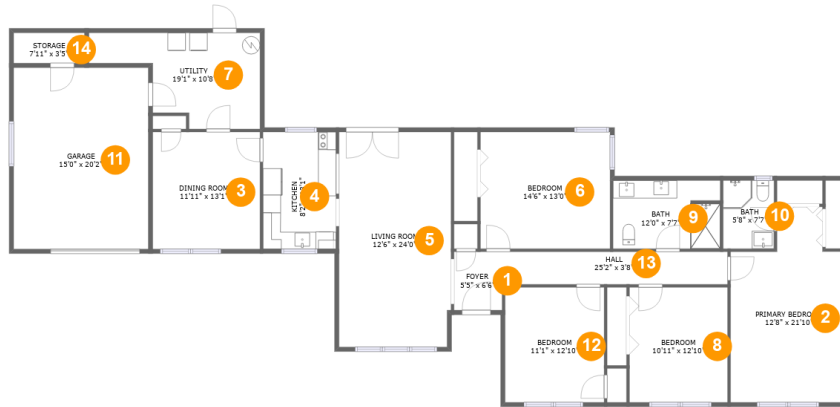
# 11940 10th Street, Santa Fe, Texas 77510, United States



## Property Summary

 **1** garages     **4** bedrooms     **2** bathrooms     **0** half baths

 **1** floors     **1,976** Gross Living Area sqft     **2,335** total sqft

**11940 10th Street, Santa Fe, Texas 77510, United States****Room Dimensions****Floor 1****Total sqft: 2335****Living area: 1976**

#	Room name	Dimensions	Area (sqft)	Counted as Living Area
1	Foyer	5'5" x 6'6"	35 sq. ft	Yes
2	Primary Bedroom	12'8" x 21'10"	239 sq. ft	Yes
3	Dining Room	11'11" x 13'1"	156 sq. ft	Yes
4	Kitchen	8'2" x 13'1"	107 sq. ft	Yes
5	Living Room	12'6" x 24'0"	299 sq. ft	Yes
6	Bedroom	14'6" x 13'0"	188 sq. ft	Yes
7	Utility	19'1" x 10'8"	145 sq. ft	Yes
8	Bedroom	10'11" x 12'10"	140 sq. ft	Yes
9	Bath	12'0" x 7'7"	90 sq. ft	Yes
10	Bath	5'8" x 7'7"	43 sq. ft	Yes
11	Garage	15'0" x 20'2"	304 sq. ft	No

Scan captured on Mon, 19 Aug 2024 17:31:14 GMT

Information is calculated by CubiCasa technology; deemed highly reliable but not guaranteed.

**11940 10th Street, Santa Fe, Texas 77510, United States**

#	Room name	Dimensions	Area (sqft)	Counted as Living Area
12	Bedroom	11'1" x 12'10"	142 sq. ft	Yes
13	Hall	25'2" x 3'8"	91 sq. ft	Yes
14	Storage	7'11" x 3'5"	27 sq. ft	No

# 11940 10th Street, Santa Fe, Texas 77510, United States

## 1 Floor 1 - Foyer



Dimensions: 5'5" x 6'6"  
Area: 35 sq. ft  
Counted as Living Area:  
Yes

Heated: Yes  
Finished: Yes  
Enclosed: Yes  
Contiguous:  
Yes  
Permitted: Yes  
Wet Space: No  
Addition: No  
Conversion: No

## 2 Floor 1 - Primary Bedroom

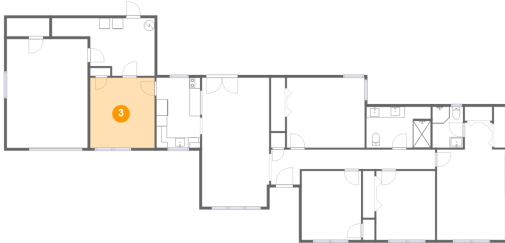


Dimensions: 12'8" x 21'10"  
Area: 239 sq. ft  
Counted as Living Area:  
Yes

Heated: Yes  
Finished: Yes  
Enclosed: Yes  
Contiguous:  
Yes  
Permitted: Yes  
Wet Space: No  
Addition: No  
Conversion: No

# 11940 10th Street, Santa Fe, Texas 77510, United States

## 3 Floor 1 - Dining Room



**Dimensions:** 11'11" x 13'1"  
**Area:** 156 sq. ft  
**Counted as Living Area:**  
Yes

**Heated:** Yes  
**Finished:** Yes  
**Enclosed:** Yes  
**Contiguous:**  
Yes  
**Permitted:** Yes  
**Wet Space:** No  
**Addition:** No  
**Conversion:** No

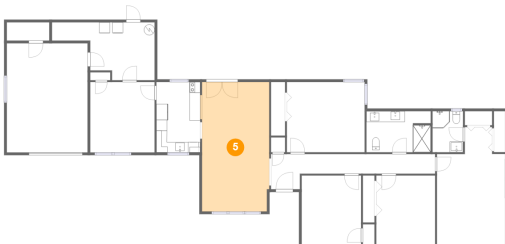
## 4 Floor 1 - Kitchen



**Dimensions:** 8'2" x 13'1"  
**Area:** 107 sq. ft  
**Counted as Living Area:**  
Yes

**Heated:** Yes  
**Finished:** Yes  
**Enclosed:** Yes  
**Contiguous:**  
Yes  
**Permitted:** Yes  
**Wet Space:** No  
**Addition:** No  
**Conversion:** No

## 5 Floor 1 - Living Room

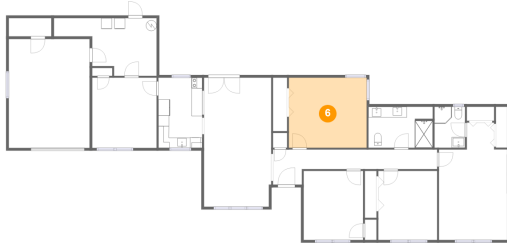


**Dimensions:** 12'6" x 24'0"  
**Area:** 299 sq. ft  
**Counted as Living Area:**  
Yes

**Heated:** Yes  
**Finished:** Yes  
**Enclosed:** Yes  
**Contiguous:**  
Yes  
**Permitted:** Yes  
**Wet Space:** No  
**Addition:** No  
**Conversion:** No

# 11940 10th Street, Santa Fe, Texas 77510, United States

## 6 Floor 1 - Bedroom



Dimensions: 14'6" x 13'0"  
Area: 188 sq. ft  
Counted as Living Area:  
Yes

Heated: Yes  
Finished: Yes  
Enclosed: Yes  
Contiguous:  
Yes  
Permitted: Yes  
Wet Space: No  
Addition: No  
Conversion: No

## 7 Floor 1 - Utility



Dimensions: 19'1" x 10'8"  
Area: 145 sq. ft  
Counted as Living Area:  
Yes

Heated: Yes  
Finished: Yes  
Enclosed: Yes  
Contiguous:  
Yes  
Permitted: Yes  
Wet Space: No  
Addition: No  
Conversion: No

## 8 Floor 1 - Bedroom



Dimensions: 10'11" x 12'10"  
Area: 140 sq. ft  
Counted as Living Area:  
Yes

Heated: Yes  
Finished: Yes  
Enclosed: Yes  
Contiguous:  
Yes  
Permitted: Yes  
Wet Space: No  
Addition: No  
Conversion: No

# 11940 10th Street, Santa Fe, Texas 77510, United States

## 9 Floor 1 - Bath



Dimensions: 12'0" x 7'7"  
Area: 90 sq. ft  
Counted as Living Area:  
Yes

Heated: Yes  
Finished: Yes  
Enclosed: Yes  
Contiguous:  
Yes  
Permitted: Yes  
Wet Space: Yes  
Addition: No  
Conversion: No

## 10 Floor 1 - Bath



Dimensions: 5'8" x 7'7"  
Area: 43 sq. ft  
Counted as Living Area:  
Yes

Heated: Yes  
Finished: Yes  
Enclosed: Yes  
Contiguous:  
Yes  
Permitted: Yes  
Wet Space: Yes  
Addition: No  
Conversion: No

## 11 Floor 1 - Garage



Dimensions: 15'0" x 20'2"  
Area: 304 sq. ft  
Counted as Living Area: No

Heated: No  
Finished: No  
Enclosed: Yes  
Contiguous: Yes  
Permitted: Yes  
Wet Space: No  
Addition: No  
Conversion: No

# 11940 10th Street, Santa Fe, Texas 77510, United States

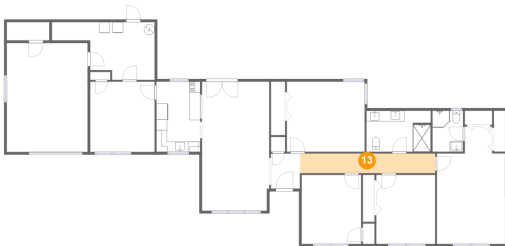
## 12 Floor 1 - Bedroom



**Dimensions:** 11'1" x 12'10"  
**Area:** 142 sq. ft  
**Counted as Living Area:**  
Yes

**Heated:** Yes  
**Finished:** Yes  
**Enclosed:** Yes  
**Contiguous:**  
Yes  
**Permitted:** Yes  
**Wet Space:** No  
**Addition:** No  
**Conversion:** No

## 13 Floor 1 - Hall



**Dimensions:** 25'2" x 3'8"  
**Area:** 91 sq. ft  
**Counted as Living Area:**  
Yes

**Heated:** Yes  
**Finished:** Yes  
**Enclosed:** Yes  
**Contiguous:**  
Yes  
**Permitted:** Yes  
**Wet Space:** No  
**Addition:** No  
**Conversion:** No

## 14 Floor 1 - Storage



**Dimensions:** 7'11" x 3'5"  
**Area:** 27 sq. ft  
**Counted as Living Area:** No

**Heated:** No  
**Finished:** No  
**Enclosed:** No  
**Contiguous:** Yes  
**Permitted:** Yes  
**Wet Space:** No  
**Addition:** No  
**Conversion:** No