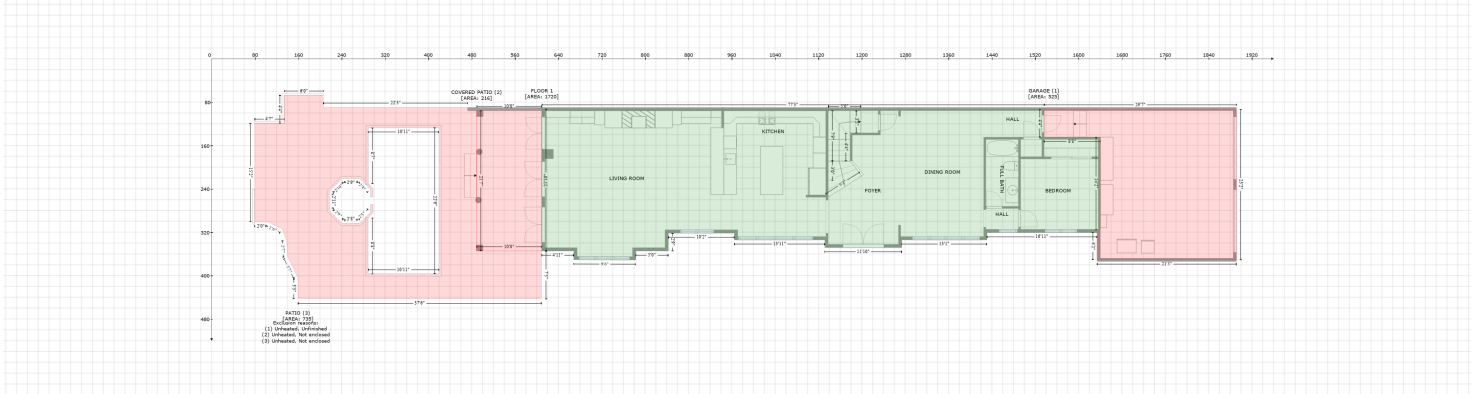


1135 Abbeys Way, Harbour Island, Tampa, Hillsborough County, Florida, United States, 33602

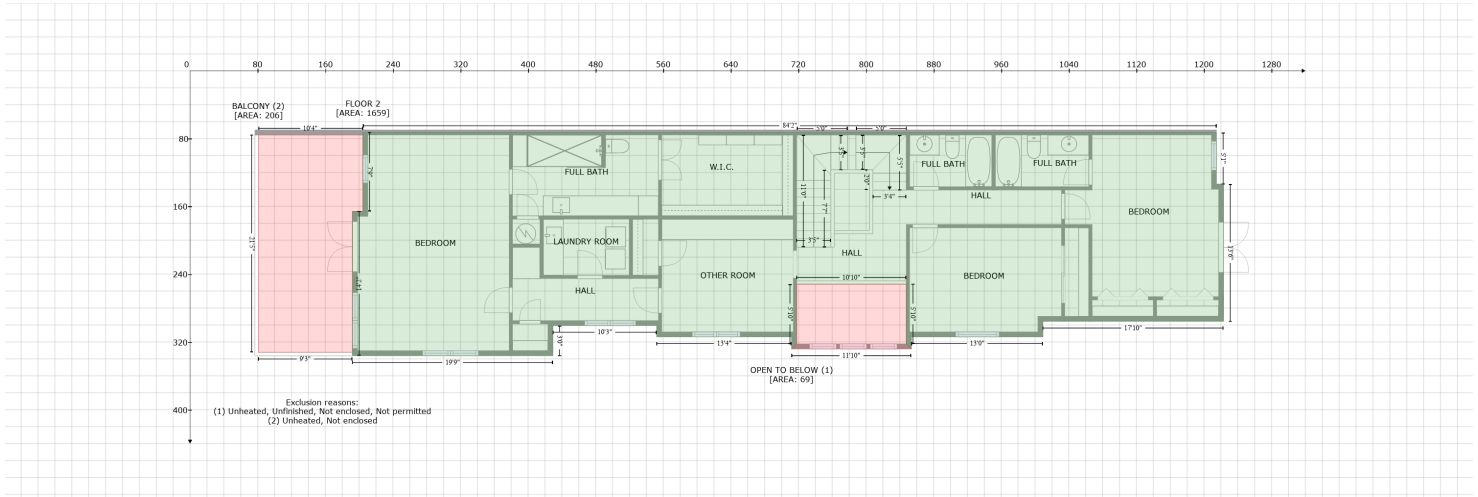
Gross Living Area: 4343 sq. ft



| Space | Area (sq. ft) | Calculation |
|---|---------------|--|
| FLOOR 1 (Living area) | 1720 | Coordinate Polygon Area Algorithm using inches $-\left((1536.3 + 1536.3) * (92.8 - 144.6) + (1536.3 + 1640.3) * (144.6 - 144.6) + (1640.3 + 1640.3) * (144.6 - 314.7) + (1640.3 + 1634.3) * (314.7 - 320.7) + (1634.3 + 1431) * (320.7 - 320.7) + (1431 + 1431) * (320.7 - 334.1) + (1431 + 1273.7) * (334.1 - 334.1) + (1273.7 + 1273.7) * (334.1 - 348.3) + (1273.7 + 1131.9) * (348.3 - 348.3) + (1131.9 + 1131.9) * (348.3 - 334.1) + (1131.9 + 964.9) * (334.1 - 334.1) + (964.9 + 964.9) * (334.1 - 321.6) + (964.9 + 842.9) * (321.6 - 321.6) + (842.9 + 842.9) * (321.6 - 354.6) + (842.9 + 782.9) * (354.6 - 354.6) + (782.9 + 782.9) * (354.6 - 371.1) + (782.9 + 668.6) * (371.1 - 370.7) + (668.6 + 668.6) * (370.7 - 354.6) + (668.6 + 609.3) * (354.6 - 354.6) + (609.3 + 609.3) * (354.6 - 92.8) + (609.3 + 1536.3) * (92.8 - 92.8)) * 0.5 * 0.00694$ |
| GARAGE (Non-living area) | 525 | $-\left((1891.6 + 1891.6) * (92.8 - 371) + (1891.6 + 1634.3) * (371 - 371) + (1634.3 + 1634.3) * (371 - 320.7) + (1634.3 + 1640.3) * (320.7 - 314.7) + (1640.3 + 1640.3) * (314.7 - 144.6) + (1640.3 + 1536.3) * (144.6 - 144.6) + (1536.3 + 1536.3) * (144.6 - 92.8) + (1536.3 + 1891.6) * (92.8 - 92.8)) * 0.5 * 0.00694$ |
| COVERED PATIO (Non-living area) | 216 | $-\left((609.2 + 609.3) * (95.8 - 354.6) + (609.3 + 489.1) * (354.6 - 354.6) + (489.1 + 489.1) * (354.6 - 95.8) + (489.1 + 609.2) * (95.8 - 95.8)) * 0.5 * 0.00694$ |
| PATIO (Non-living area) | 735 | $-\left((206 + 206) * (67.5 - 89.8) + (206 + 472.6) * (89.8 - 89.8) + (472.6 + 472.6) * (89.8 - 95.8) + (472.6 + 489.1) * (95.8 - 95.8) + (489.1 + 489.1) * (95.8 - 354.6) + (489.1 + 609.3) * (354.6 - 354.6) + (609.3 + 609.3) * (354.6 - 443.4) + (609.3 + 159.4) * (443.4 - 443.4) + (159.4 + 159.4) * (443.4 - 403.9) + (159.4 + 140.6) * (403.9 - 365.7) + (140.6 + 138.5) * (365.7 - 335.3) + (138.5 + 129.9) * (335.3 - 313.7) + (129.9 + 103.1) * (313.7 - 301) + (103.1 + 79.3) * (301 - 301) + (79.3 + 79.3) * (301 - 119.3) + (79.3 + 133.9) * (119.3 - 119.3) + (133.9 + 133.9) * (119.3 - 67.5) + (133.9 + 206) * (67.5 - 67.5)) * 0.5 * 0.00694 + \left((419.6 + 288.9) * (127.3 - 127.3) + (288.9 + 289) * (127.3 - 230.3) + (289 + 297.7) * (230.3 - 239.3) + (297.7 + 297.7) * (239.3 - 255.2) + (297.7 + 293.7) * (255.2 - 255.2) + (293.7 + 293.7) * (255.2 - 241) + (293.7 + 273.7) * (241 - 221) + (273.7 + 240.9) * (221 - 221) + (240.9 + 217.1) * (221 - 244.8) + (217.1 + 217.1) * (244.8 - 280.3) + (217.1 + 240.7) * (280.3 - 303.9) + (240.7 + 273) * (303.9 - 303.9) + (273 + 293.7) * (303.9 - 283.2) + (293.7 + 293.7) * (283.2 - 269) + (293.7 + 297.7) * (269 - 269) + (297.7 + 297.7) * (269 - 284.9) + (297.7 + 288.7) * (284.9 - 293.3) + (288.7 + 288.7) * (293.3 - 397) + (288.7 + 419.6) * (397 - 397) + (419.6 + 419.6) * (397 - 127.3)) * 0.5 * 0.00694$ |

1135 Abbeys Way, Harbour Island, Tampa, Hillsborough County, Florida, United States, 33602

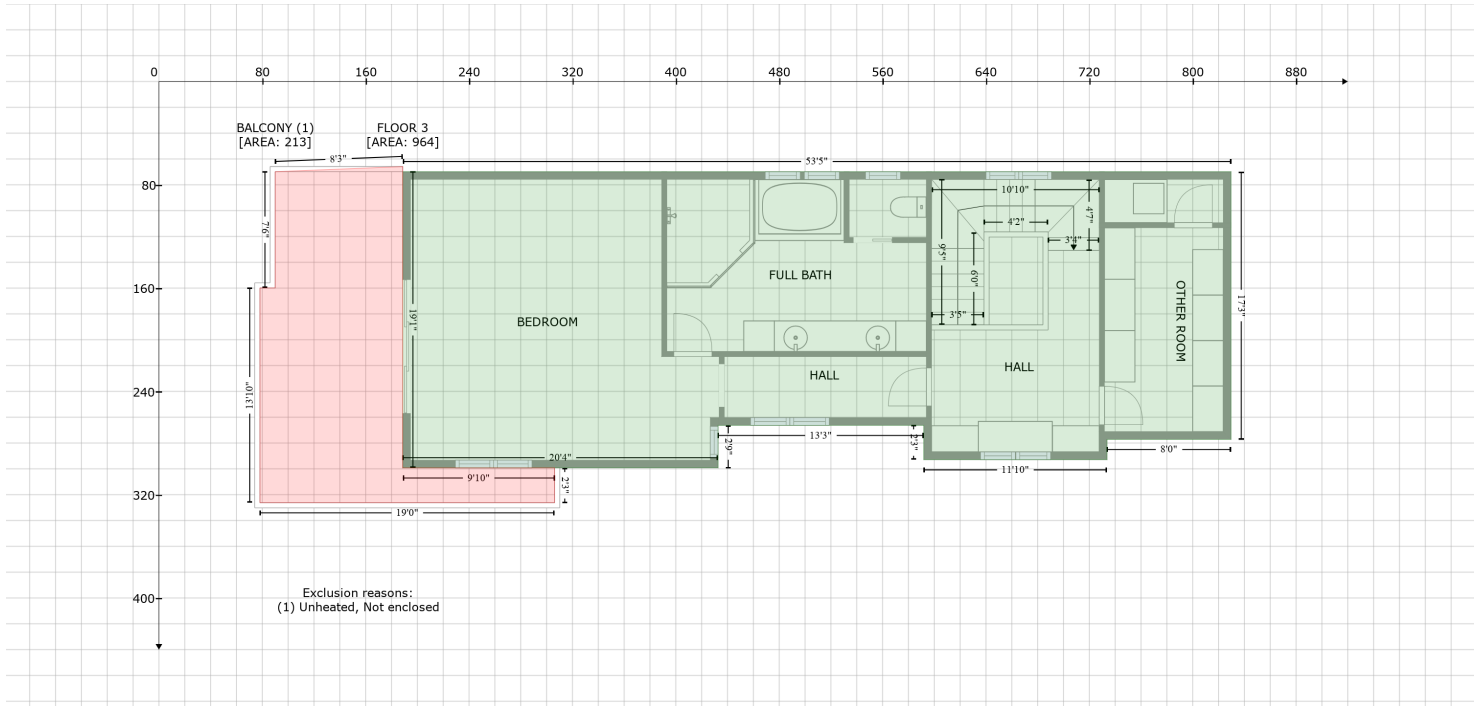
Gross Living Area: 4343 sq. ft



| Space | Area (sq. ft) | Calculation |
|------------------------------------|---------------|--|
| FLOOR 2 (Living area) | 1659 | Coordinate Polygon Area Algorithm using inches $-((1214.8 + 1214.8) * (72.8 - 133.7) + (1214.8 + 1223.2) * (133.7 - 133.7) + (1223.2 + 1223.2) * (133.7 - 295.8) + (1223.2 + 1009.4) * (295.8 - 295.8) + (1009.4 + 1009.4) * (295.8 - 314.1) + (1009.4 + 853.7) * (314.1 - 314.1) + (853.7 + 853.7) * (314.1 - 328.3) + (853.7 + 847.7) * (328.3 - 322.3) + (847.7 + 847.7) * (322.3 - 251.9) + (847.7 + 717.9) * (251.9 - 251.9) + (717.9 + 717.9) * (251.9 - 322.3) + (717.9 + 711.9) * (322.3 - 328.3) + (711.9 + 711.9) * (328.3 - 314.1) + (711.9 + 552.2) * (314.1 - 314.1) + (552.2 + 552.2) * (314.1 - 300.8) + (552.2 + 429.5) * (300.8 - 300.8) + (429.5 + 429.5) * (300.8 - 336.4) + (429.5 + 192.2) * (336.4 - 336.4) + (192.2 + 192.2) * (336.4 - 165.9) + (192.2 + 204.5) * (165.9 - 165.9) + (204.5 + 204.5) * (165.9 - 72.8) + (204.5 + 1214.8) * (72.8 - 72.8)) * 0.5 * 0.00694$ |
| OPEN TO BELOW (Non-living area) | 69 | $-((847.7 + 847.7) * (251.9 - 322.3) + (847.7 + 853.7) * (322.3 - 328.3) + (853.7 + 711.9) * (328.3 - 328.3) + (711.9 + 717.9) * (328.3 - 322.3) + (717.9 + 717.9) * (322.3 - 251.9) + (717.9 + 847.7) * (251.9 - 251.9)) * 0.5 * 0.00694$ |
| BALCONY (Non-living area) | 206 | $-((204.5 + 204.5) * (75.8 - 165.9) + (204.5 + 192.2) * (165.9 - 165.9) + (192.2 + 192.2) * (165.9 - 332.4) + (192.2 + 80.7) * (332.4 - 332.4) + (80.7 + 80.7) * (332.4 - 75.8) + (80.7 + 204.5) * (75.8 - 75.8)) * 0.5 * 0.00694$ |

1135 Abbeys Way, Harbour Island, Tampa, Hillsborough County, Florida, United States, 33602

Gross Living Area: 4343 sq. ft



| Space | Area (sq. ft) | Calculation <small>Coordinate Polygon Area Algorithm using inches</small> |
|------------------------------|---------------|--|
| FLOOR 3 (Living area) | 964 | $-((829.7 + 829.7) * (69.8 - 277.1) + (829.7 + 733.7) * (277.1 - 277.1) + (733.7 + 733.7) * (277.1 - 292.9) + (733.7 + 591.9) * (292.9 - 292.9) + (591.9 + 591.9) * (292.9 - 266.3) + (591.9 + 432.7) * (266.3 - 266.3) + (432.7 + 432.7) * (266.3 - 299.2) + (432.7 + 188.7) * (299.2 - 299.2) + (188.7 + 188.7) * (299.2 - 69.8) + (188.7 + 829.7) * (69.8 - 69.8)) * 0.5 * 0.00694$ |
| BALCONY (Non-living area) | 213 | $-((188.7 + 188.7) * (65.9 - 299.2) + (188.7 + 306.2) * (299.2 - 299.2) + (306.2 + 306.2) * (299.2 - 326.2) + (306.2 + 78.2) * (326.2 - 326.2) + (78.2 + 78.2) * (326.2 - 159.9) + (78.2 + 89.9) * (159.9 - 159.9) + (89.9 + 89.9) * (159.9 - 69.8) + (89.9 + 188.7) * (69.8 - 65.9)) * 0.5 * 0.00694$ |