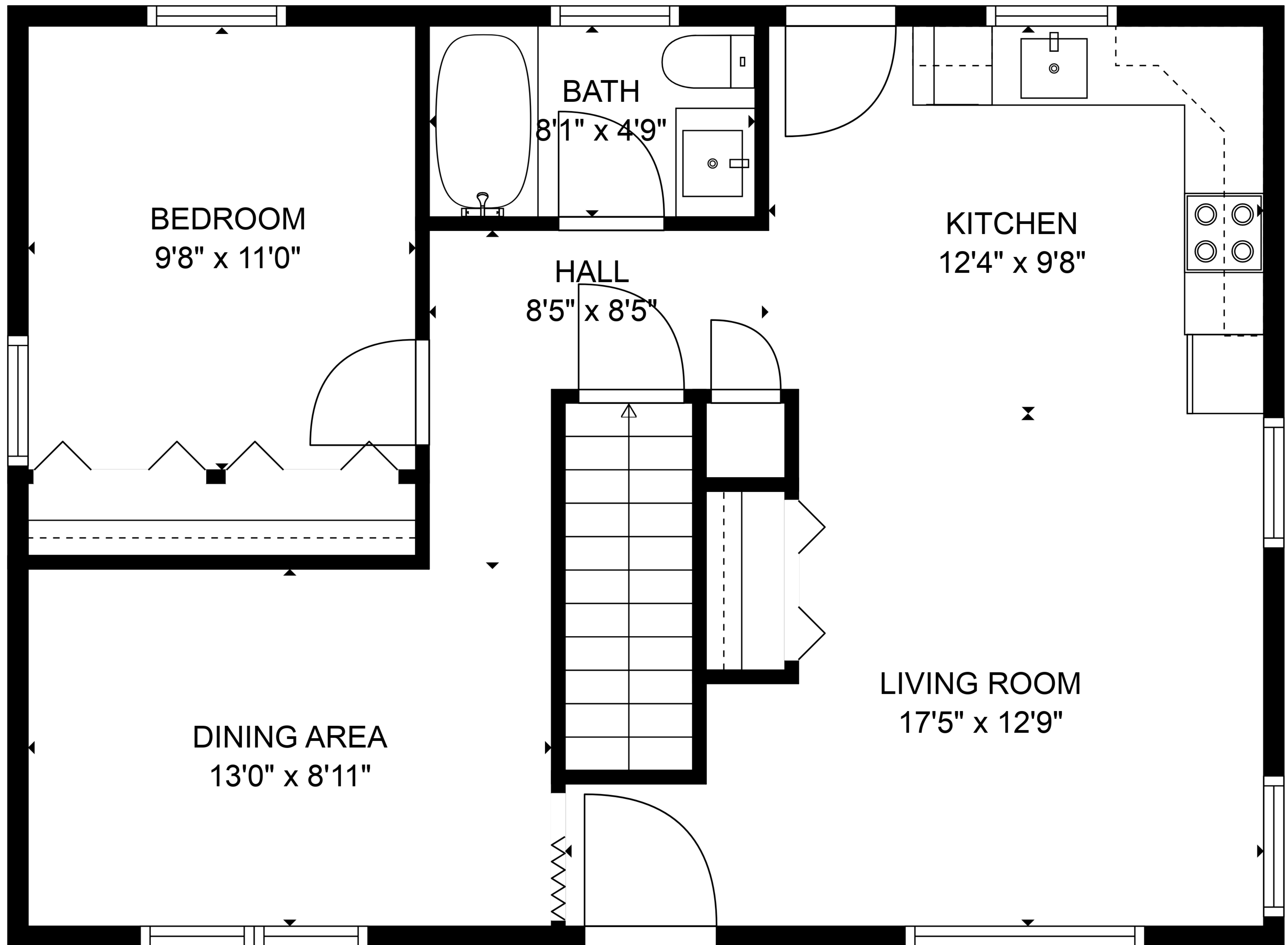


BASEMENT
30'9" x 22'5"

TOTAL: 689 sq. ft
BELOW GROUND: 0 sq. ft, FLOOR 2: 689 sq. ft
EXCLUDED AREAS: BASEMENT: 689 sq. ft
WALLS: 108 sq. ft

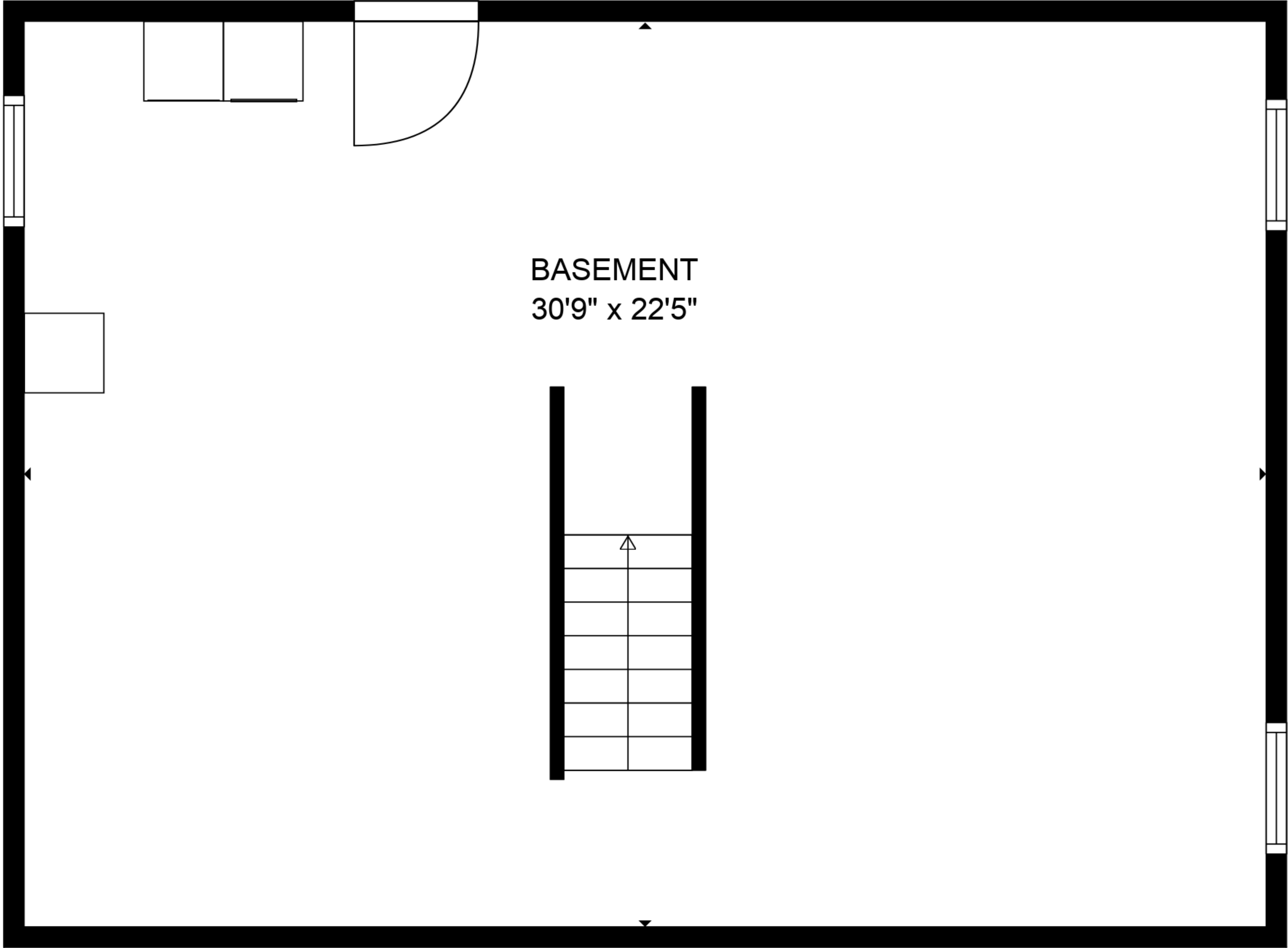


TOTAL: 689 sq. ft

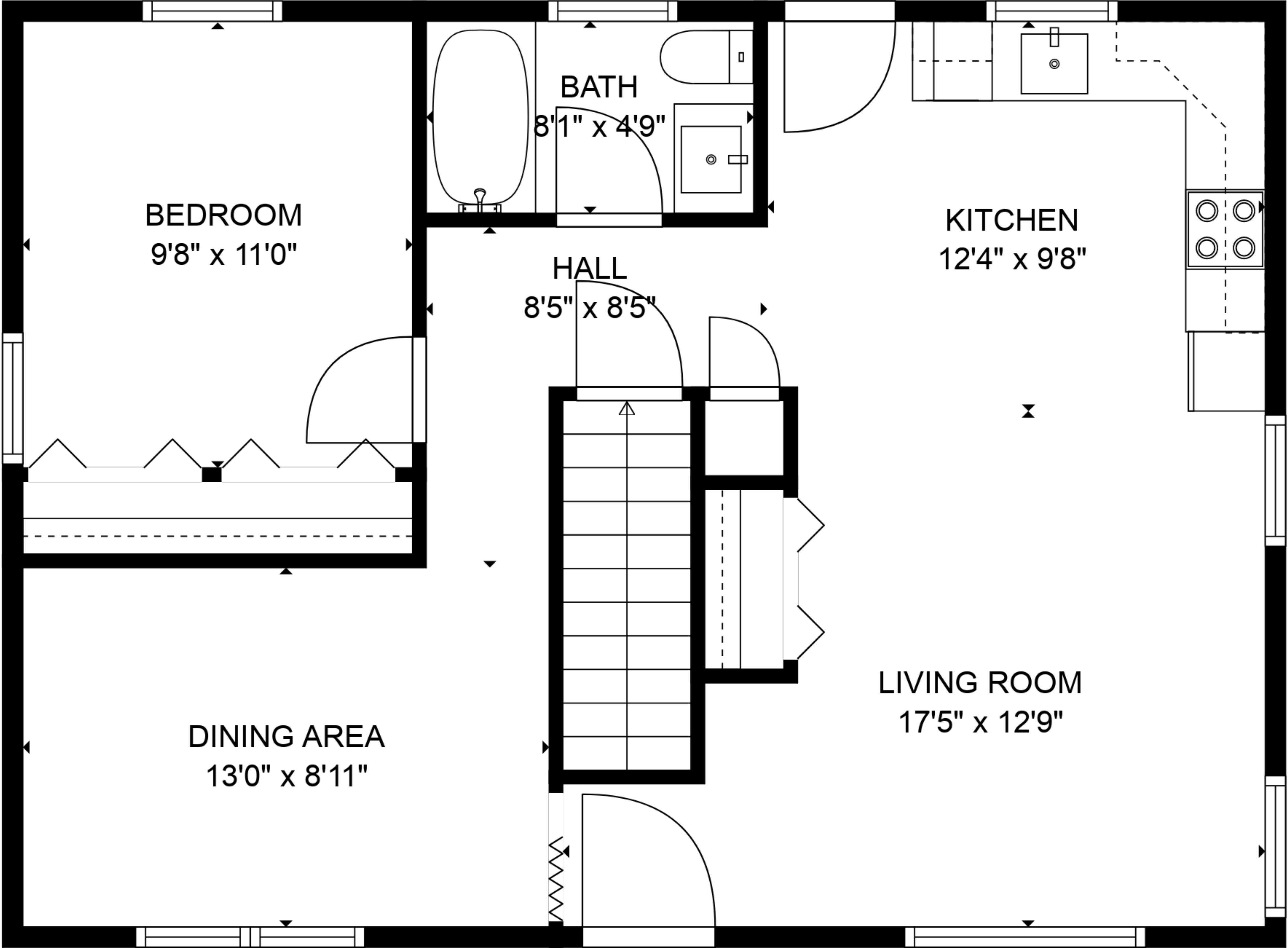
BELOW GROUND: 0 sq. ft, FLOOR 2: 689 sq. ft

EXCLUDED AREAS: BASEMENT: 689 sq. ft

WALLS: 108 sq. ft



FLOOR 1



FLOOR 2



TOTAL: 689 sq. ft
BELOW GROUND: 0 sq. ft, FLOOR 2: 689 sq. ft
EXCLUDED AREAS: BASEMENT: 689 sq. ft
WALLS: 108 sq. ft

Floor Plans are provided by HouseSnappers.com. Measurements are deemed highly reliable but not guaranteed.